

NOV 08 2023

CORTNEY BRITTEN CLEEREMAN
REGISTER OF DEEDS

241592

U S PUBLIC LAND SURVEY MONUMENT RECORD

NOTE: This form is intended and designed to fulfill all requirements of Wisconsin Administrative Code, Chapter A-E 7.08 U.S. Public Land Survey Monument Record (3) (a-i)

A-E 7.08(3)(a) Identity of corner:
EAST 1/4 CORNER SECTION 15,
TOWNSHIP 35 NORTH,
RANGE 12 EAST OF THE 4TH PM,
TOWN OF NASHVILLE,
COUNTY OF FOREST

WISCORS - FOREST COUNTY
N: 550,890.334 USft (XXX,XXX.XXX)
E: 820,410.933 USft (XXX,XXX.XXX)
Datum: NAD83 (2011)
GNSS Method RTK
GNSS Control WISCORS VRS



The coordinate value shown has been verified by the average of two or more GPS observations at a markedly different time. Coordinates shown in parenthesis are previously published values.

A-E 7.08(3)(b)

Original Surveyor: James L. Nowlin

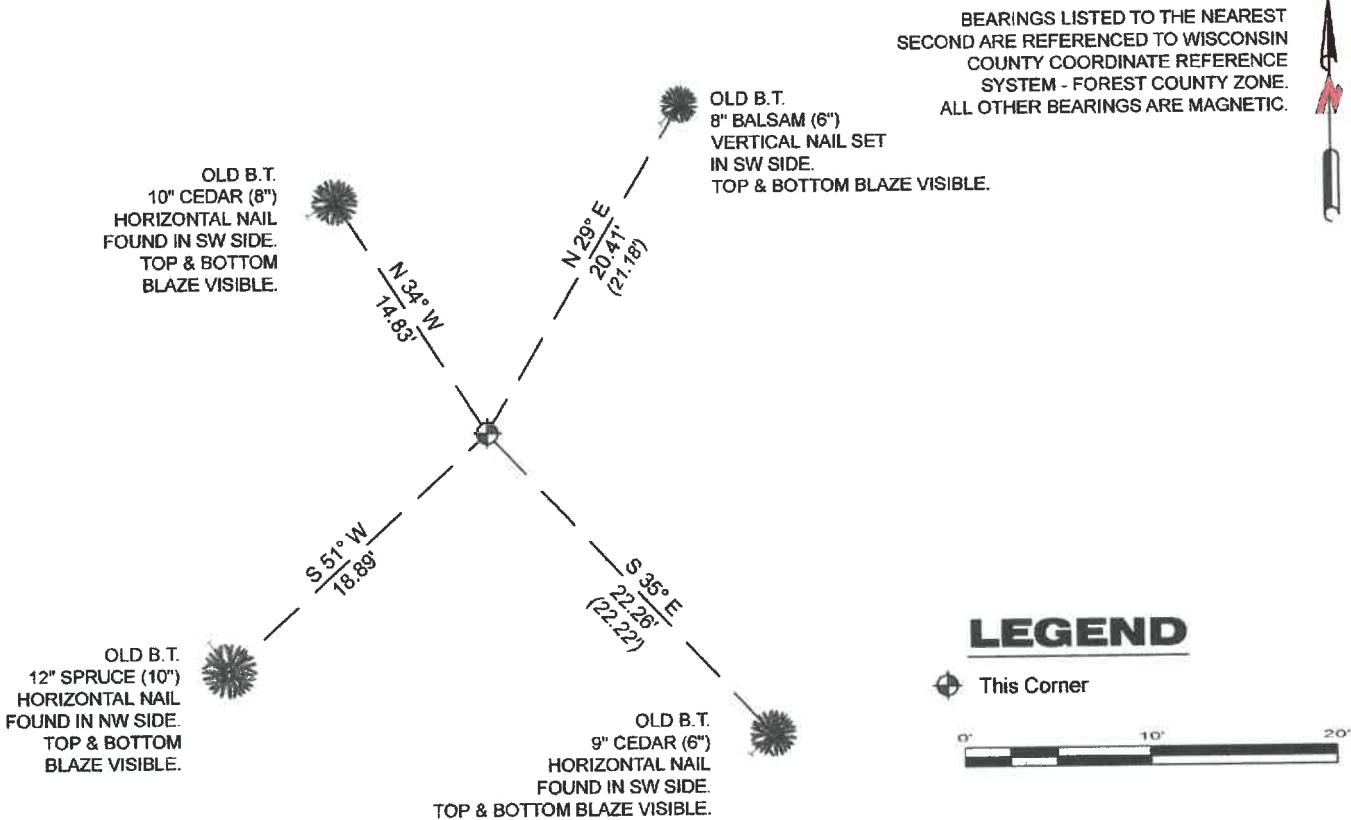
Date of Original Survey Commenced: June 26, 1865
 Completed: July 7, 1865

Original Accessories:
Hemlock 12 N 65° W 5 Links
Hemlock 15 S 80° E 20 Links

See previous U.S. Public Land Survey Monument Record - L-17 - June 8, 2005 - Surveyor 2197 - Michael A. Tremi - THENCE:

August 02, 2023 - I found a Forest County aluminum monument, being a 2.5" diameter aluminum pipe with a 3.3" diameter aluminum cap stamped to identify the corner. The monument extends ±8" above grade. I also found all 4 of Tremi's bearing trees as shown below.

A-E 7.08(3)(c)(d) Plan view of corner with references to at least 4 witness monuments.



A-E 7.08(3)(e) 1865 Surveyor set a post, 2005 Surveyor set a 2 1/2" Forest County aluminum pipe monument, I found the same, in 2023.

A-E 7.08(3)(f) I accept this monument as a FOUND PERPETUATED LOCATION of the corner.

A-E 7.08(3)(g)(h) This corner was previously determined through lost-corner-proportionate methods.

A-E 7.08(3)(i) I, Jeffrey L. DeMuth, Professional Land Surveyor No. S-2656, hereby certify that the corner location on this record was determined by me or under my direction and control, and that this U.S. Public Land Survey Monument Record is correct and complete to the best of my knowledge, and belief.

SIGNATURE

September 14, 2023

DATE



43512152000

L 17

Document Number

187590

REGISTER'S OFFICE
Forest County, Wis.
Received for record this 8th day
of June A.D., 2005 at
3:10.0 o'clock P.M. and recorded
in Vol. Corner Restoration
page L-17
Kay Swanson, Deputy
Register of Deeds

U.S. PUBLIC LAND SURVEY MONUMENT RECORD

(As Required by WI Adm. Code)

History of original corner establishment and subsequent restorations and descriptions of any record, monument, occupational, testimonial or other evidence considered:

1865 - J.L. Nowlin, set quarter corner section post and made the following B.T.'s:

Hemlock, 12", N 65° W, 5 lks., 3.30 feet.

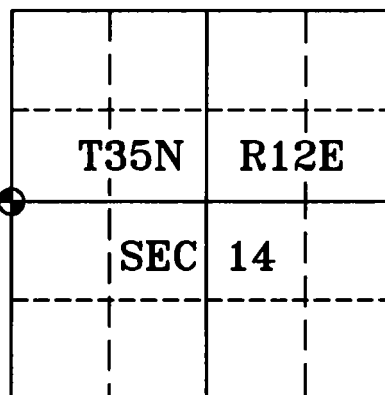
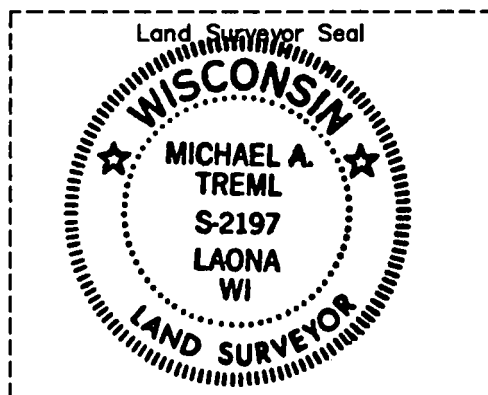
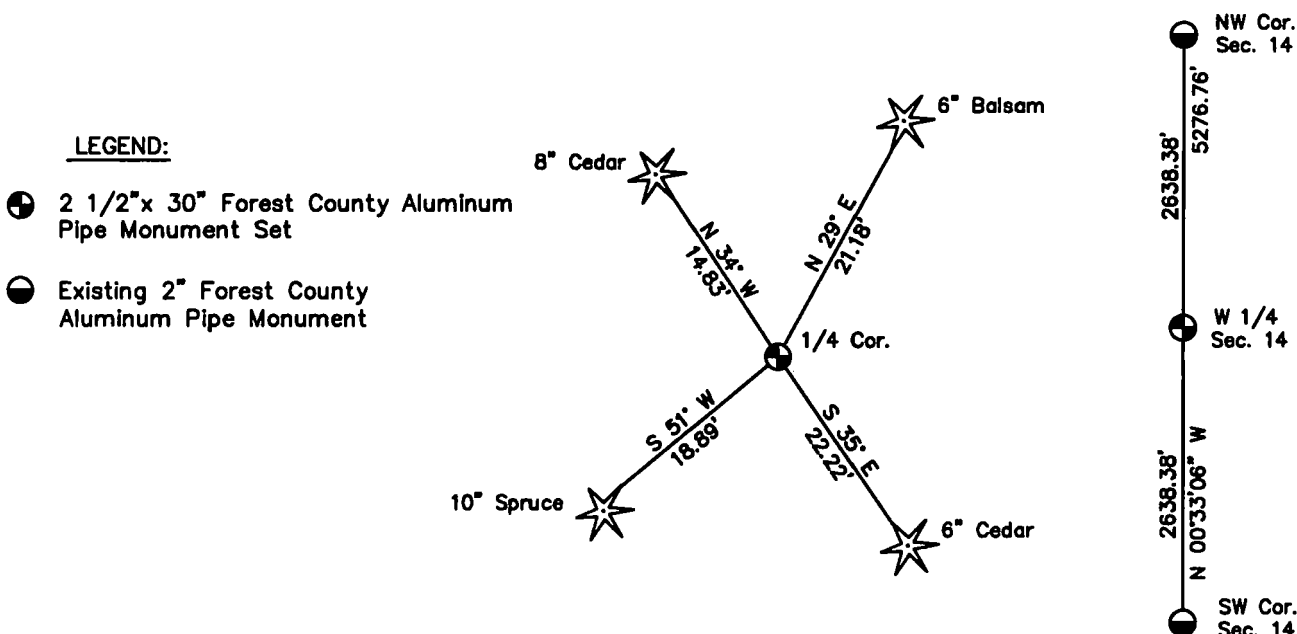
Hemlock, 15", S 80° E, 20 lks., 13.20 feet.

2005 - No evidence of the original corner or accessories were recovered. No other corner evidence was found. I reestablished the corner position at proportionate distance and on line between the Northwest and Southwest Section Corners of Section 14.

Corner was: (Check All That Apply)

- ☐ Restored through acceptance of an obliterated evidence location.
☐ Restored through acceptance of a found perpetuated location.
☒ Considered a lost corner and reestablished through lost corner proportionate methods (include a plan view drawing showing distances and directions to other Public Land Survey Corners used for proportioning and determining the corner location).
☐ Restored or reestablished in a location that differs from a previous restoration or reestablishment (include a plan view drawing and indicate what was set and/or found).

Describe the monument and accessories used to perpetuate the location of this corner (include a plan view drawing and indicate what was set and/or found).



I, Michael A. Trembl, RLS
(type or print name) certify that the corner location shown on
this record was determined by me or under my direction and
control and that this U.S. Public Land Survey Monument Record
is correct and complete to the best of my knowledge and belief.

Michael A. Trembl 6/18/05
Signature Date

The West Quarter corner of
Section 14 T. 35 N., R. 12 E.
Forest County, WI

Index No. L-17

43512152000

L-17