

FEB 21 2023

CORTNEY BRITTEN CLEEREMAN
REGISTER OF DEEDS

U S PUBLIC LAND SURVEY MONUMENT RECORD

NOTE: This form is intended and designed to fulfill all requirements of Wisconsin Administrative Code, Chapter A-E 7.08 U.S. Public Land Survey Monument Record (3) (a-i)

A-E 7.08(3)(a) Identity of corner
SOUTH CORNER OF SECTION 26
TOWNSHIP 35 NORTH
RANGE 12 EAST OF THE 4TH PM
TOWN OF NASHVILLE
COUNTY OF FOREST

WISCRS - FOREST COUNTY
N: 537683.77 USft
E: 822878.92 USft
Datum: NAD83 (2011)
GNSS Method RTN - Direct
GNSS Control WISCORS VRS



The coordinate value shown has been verified by the average of two or more GPS observations at a markedly different time.

A-E 7.08(3)(b) Description of any record evidence, monument evidence, occupational evidence, testimonial evidence, or any other material evidence.

Original Surveyor: JAMES L. NOWLIN

Date of Original Survey	Commenced:	JUNE 26, 1865	Original Accessories:		
	Completed:	JULY 7, 1865	W. PINE	24	S 62° W 55 Links
			W. PINE	20	N 55° E 62 Links

NOV. 12, 1989 - Surveyor S-887 - Thomas R. Arnott - indicates this position as Aluminum Monument set on Map #351226-19891113. Arnott shows distance from C1/4 to S1/4 of 2601.98'; I measured 2602.08'.

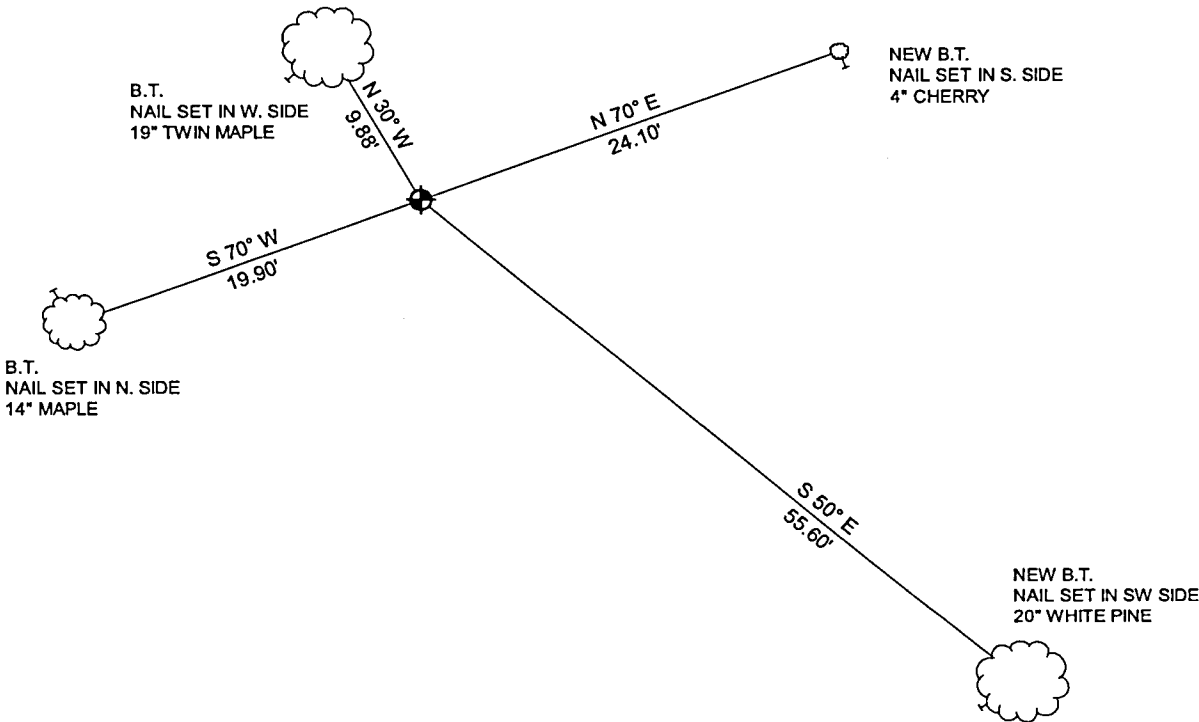
July 14, 2008- Surveyor S-2118 - Michael L Oestreich - indicates this position as a Capped Alum. Mon. found in place on Map #321235-20080714. Oestreich shows distance from SW Corner to S1/4 of 2626.29'; I measured 2626.28'.

A-E 7.08(3)(f) Whether the corner was restored through acceptance of an obliterated location or a found perpetuated location.

April 17, 2021 - I found a Forest County Aluminum Monument and referenced corner as shown below.

I accept this monument as a FOUND PERPETUATED LOCATION OF THE CORNER and established 4 new witnesses as shown below.

A-E 7.08(3)(c)(d)(e)(h) Plan view of corner with references to at least 4 witness monuments. If in disagreement with previously established corner, show the distances between the two corners and also indicate the ties to the disputed. The directions and distances to other public land survey corners used as evidence or used for determining the corner location.



A-E 7.08(3)(i) I, James E Anderson, Professional Land Surveyor No. S-3127, hereby certify that the corner location on this record was determined by me or under my direction and control and that this U.S. Public Land Survey Monument Record is correct and complete to the best of my knowledge, and belief

SIGNATURE

James E Anderson

FEBRUARY 12, 2023
DATE



43512260020

V-19