

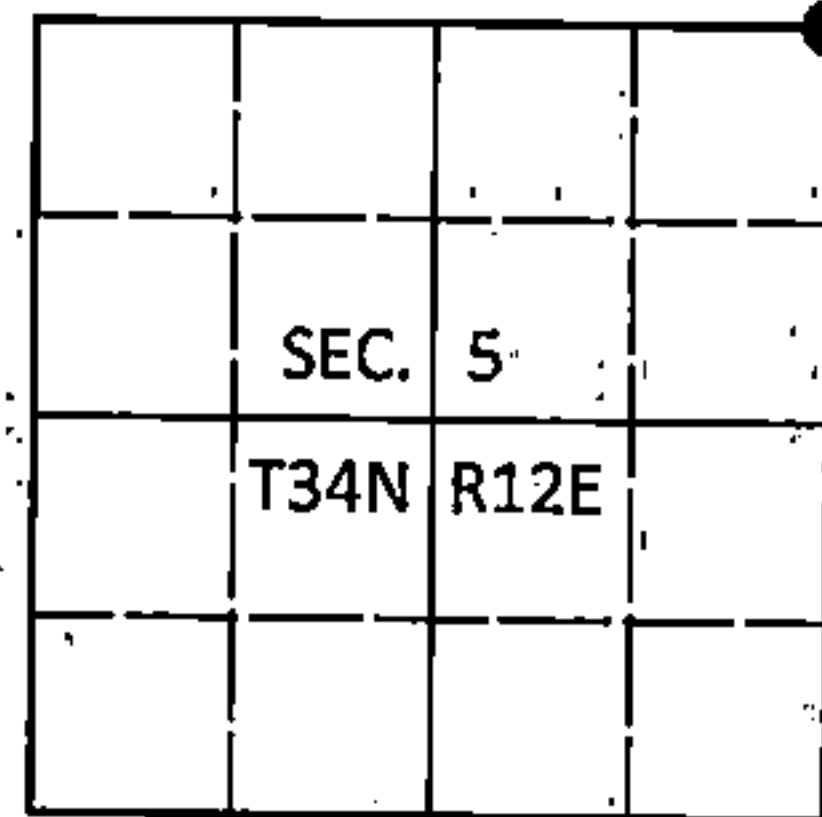
225160

U.S. PUBLIC LAND SURVEY MONUMENT RECORD

Note: This form is intended and designed to fulfill all requirements of Wisconsin Administrative Code, Chapter A-E 7.08 U.S. Public Land Survey Monument Record (3)(a-i).

(a) CORNER LOCATION
Cor. of Secs. 4, 5, 32 & 33
Township 34 & 35 North
Range 12 East of the 4th P.M.
Town of Ainsworth/Nashville
County of Langlade/Forest

WISCRS - Langlade County
N: 458,686.29 USft
E: 658,242.08 USft
WISCRS - Forest County
N: 532,312.35 USft
E: 809,601.95 USft
Datum: NAD 83(2011)
GNSS Method: WISCORS RTN



(b) HISTORY OF ORIGINAL CORNER ESTABLISHMENT

Original Surveyor: Alfred Millard

Original Accessories:

Date of Survey Commenced: August, 1857
Completed: August, 1857

Spruce 10" N1°W, 24 lks.
Spruce 6" S8°W, 18 lks.
Spruce 6" N44°E, 16 lks.
Spruce 8" S70°E, 33 lks.

(b)(f)(g)(h) Description of monument found at this corner and if it was accepted, state all evidence (material, testimonial, occupational, plats, records, other monuments) used as a basis for accepting. If not accepted or if nothing was found, state evidence used as basis for establishing location. If re-established through lost corner proportionate methods, indicate all monuments, distances and directions used to establish. Indicate type of monument and sign post found or set.

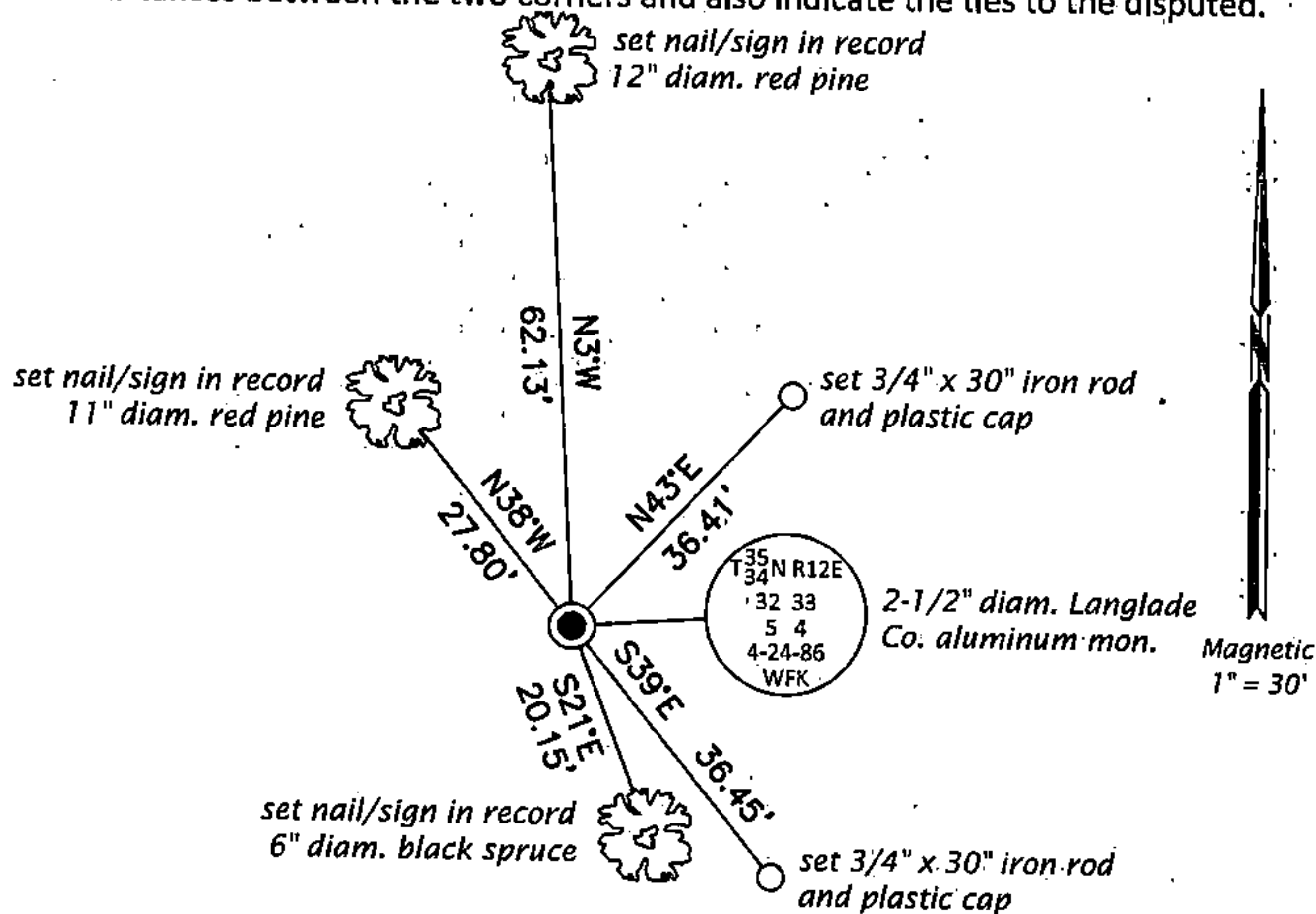
This is a perpetuation of a previous USPLS Monument Record by William F. Kelly, RLS dated December 11, 1986 and filed in the office of the Langlade County Surveyor. A complete history of the corner can be found on the previous monument record. I accept the previous location as a true and faithful perpetuation or reestablishment of the original corner location and further perpetuate it as follows.

To augment the record:

1932-1934: Survey notes by Charles W. Borth, Langlade County Surveyor Record #10317. "Old cruiser marks: Piece of old rotted stake. Old blazes N, S, E & W of corner. No sign of any of the original BT's. Set and scribed new cedar stake. New BT's: spruce 7.571°W, 11.8 ft., spruce 8 N75°E, 13.5 ft."

November 12, 2016: I found and accepted the record monument, a 2-1/2" diam. aluminum pipe with a 3-1/4" diam. Langlade Co. aluminum cap projecting 6" above the ground surface. I set a DEEP-1 magnet adjacent to the monument. I found humps at the location of both of Borth's spruce bearing trees. I found Kelly's birch standing dead. I found or established accessories as shown below. I set a white vinyl sign post bearing Northeast, 0.8 ft.

(c)(d)(e) Plan view of corner with ties to at least 4 witness monuments. If in disagreement with previously established corner, show the distances between the two corners and also indicate the ties to the disputed.

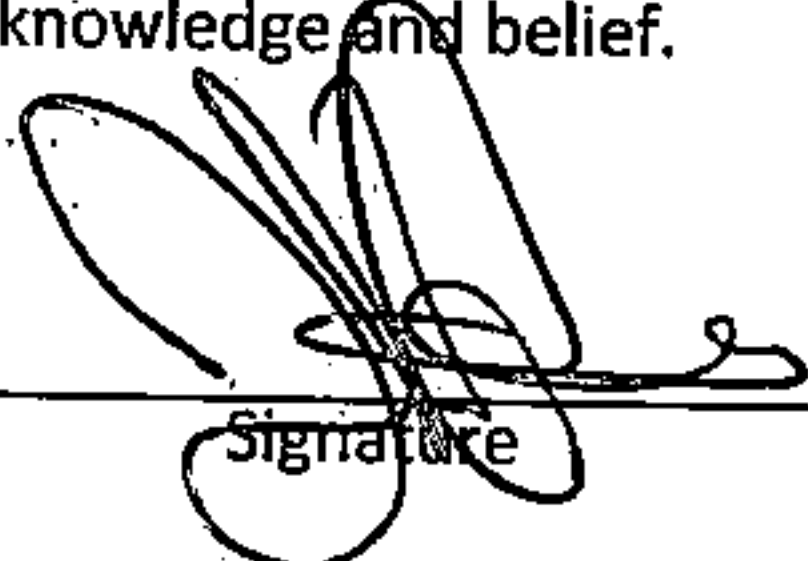


FOREST COUNTY, WI
CORTNEY BRITTEN CLEERMAN
REGISTER OF DEEDS
RECEIVED FOR RECORD

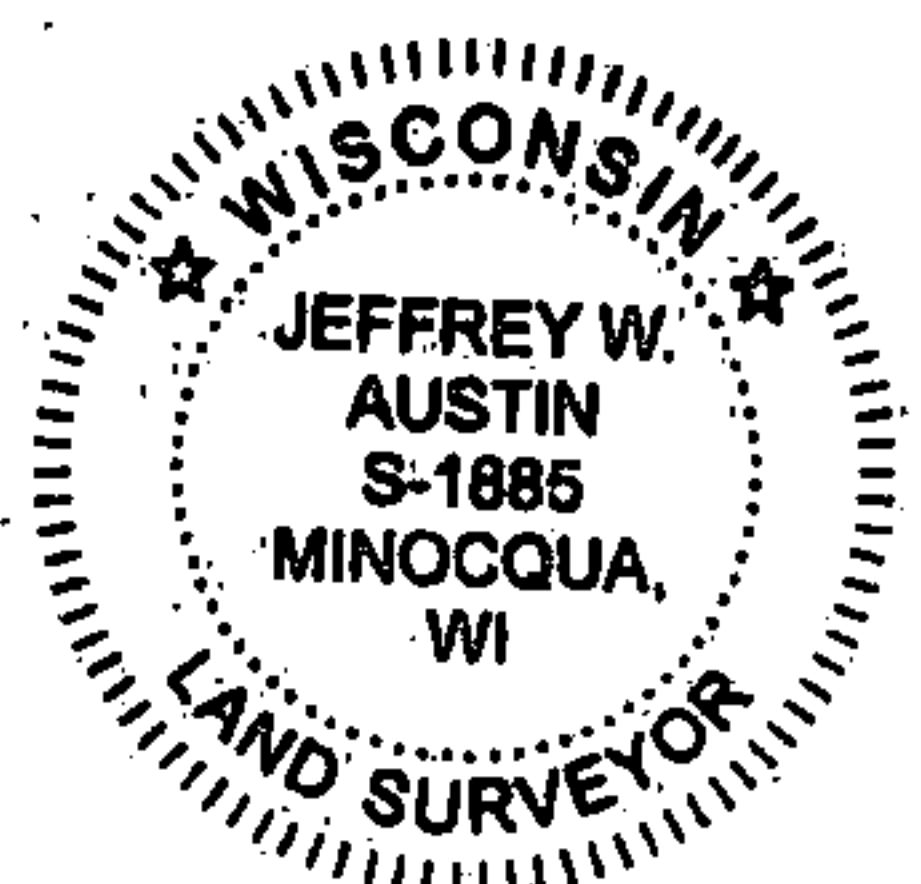
APR 27 2018

Time: 10:00 A.M.
Vol.: Corner Restoration
Page Number: 2-9

(i) I, Jeffrey W. Austin, Professional Land Surveyor No. S-1885, hereby certify that the corner location on this record was determined by me or under my direction and control and that this U.S. Public Land Survey Monument Record is correct and complete to the best of my knowledge and belief.


Signature

MAY 4, 2017
Date



3512320000 (INDEX NO. A-9)

43512320000