

# CERTIFIED LAND CORNER RESTORATION

Index No. **W21**

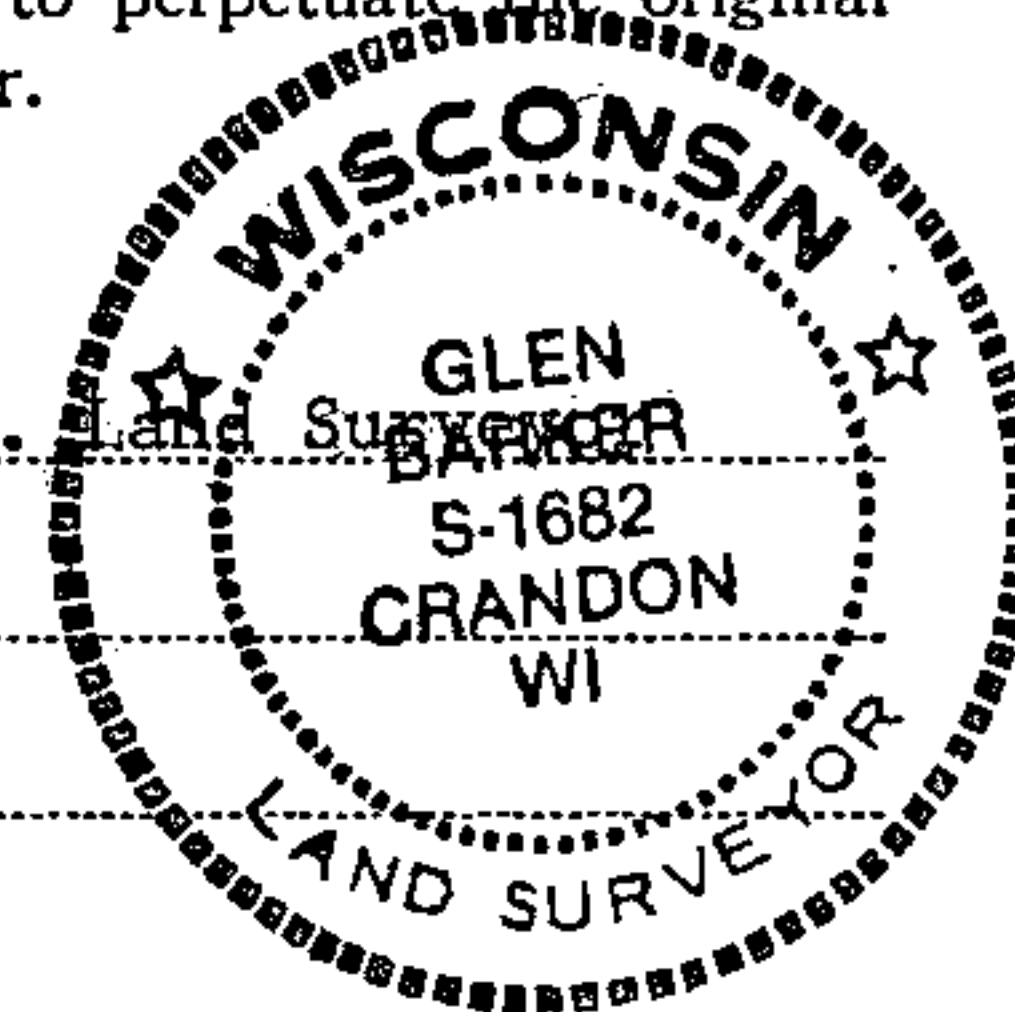
State of Wisconsin }  
County of Forest } ss.

I Glen Barker, do hereby  
certify that on the 28th day  
of April, 1983, I ~~found~~  
~~xxx~~ established N 1/16  
corner of Sections 35 & 36  
Township 35, North, Range  
13 East, Fourth Principal Meridian,  
as described hereon; and that from this evidence  
I established a new monument and accessories  
as described hereon to perpetuate the original  
location of this corner.

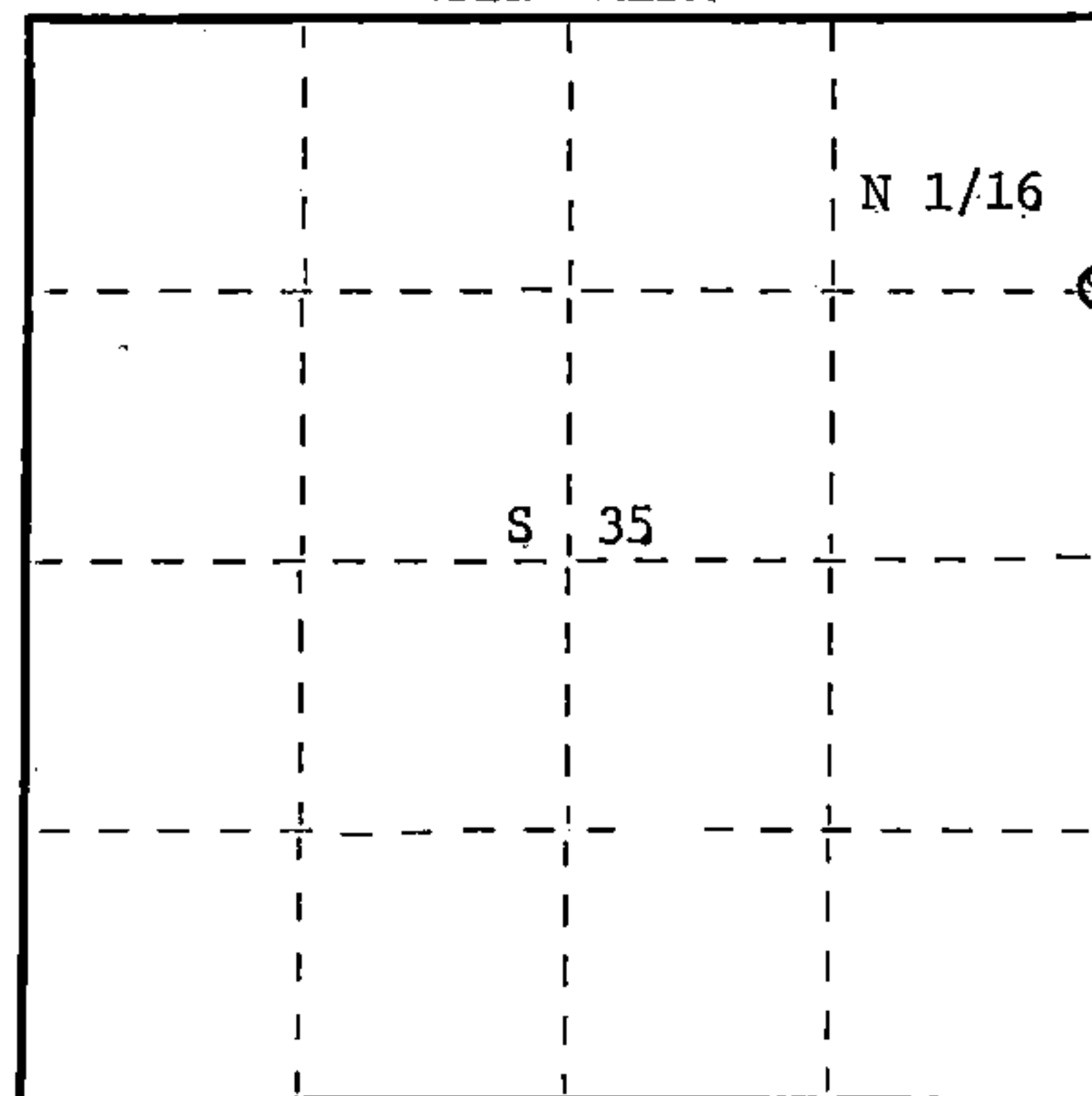
Resident witnesses:

J. Claflin, Reg.

H. Wagoner



T35N R13E



○ = Corner monument restored.

History of original corner establishment:

No evidence of any previous corner.

Description of corner evidence found:

Total distance between section corner 25-26-35-36 to 1/4 corner between sections  
35 and 36 is 2626.46 feet.  
Set N 1/16 1313.23 feet intermediate.

Description of monument and accessories I established to perpetuate the original location of this corner.

Set a 1" iron pipe with 2" diameter alloy cap, stamped:  
Monument projects 18" above ground.  
Marked NBT's:

Maple 6" S84E 15.05 feet  
Maple 8" N9W 16.15 feet  
scribed 1/16 - B.T.

S1682  
T35N R13E  
N 1/16 35+36  
CPI - 1983

Dated at Rhineland, Wis., this 30th day of June, 1983

Signature Glen Barker Title Registered Land Surveyor Registration No. S-1682  
(County Surveyor, Registered Land Surveyor, or other duly authorized official)

Office of Register of Deeds, County of Forest, I hereby certify that the within  
instrument was filed in this office for record on the 26th day of July, 1983  
at 11:55 o'clock A. M.

Eugene Stutzman  
(Register of Deeds)  
By \_\_\_\_\_ Deputy

DOCUMENT NO. **123858**

Stock No. 26272

FORM 985 H.C. Miller Company

435133530000