

Document Number  
203313

REGISTER'S OFFICE  
Forest County, Wis.  
Received for record this 13<sup>th</sup> day  
of May A.D., 2010 at  
2:00 o'clock P. M. and recorded  
in Vol. Corner Restoration  
page C-9  
Kay Swanson, Deputy  
Register of Deeds

U.S. PUBLIC LAND SURVEY MONUMENT RECORD

(As Required by WI Adm. Code)

History of original corner establishment and subsequent restorations and descriptions of any record, monument, occupational, testimonial or other evidence considered:

1859 - James McBride, set original corner post and made the following B.T.'s:

Hemlock, 14", S 78° W, 5 lks., 3.30 feet.  
Hemlock, 8", N 47° E, 26 lks., 17.16 feet.

2010 - I found no evidence of original corner or accessories.

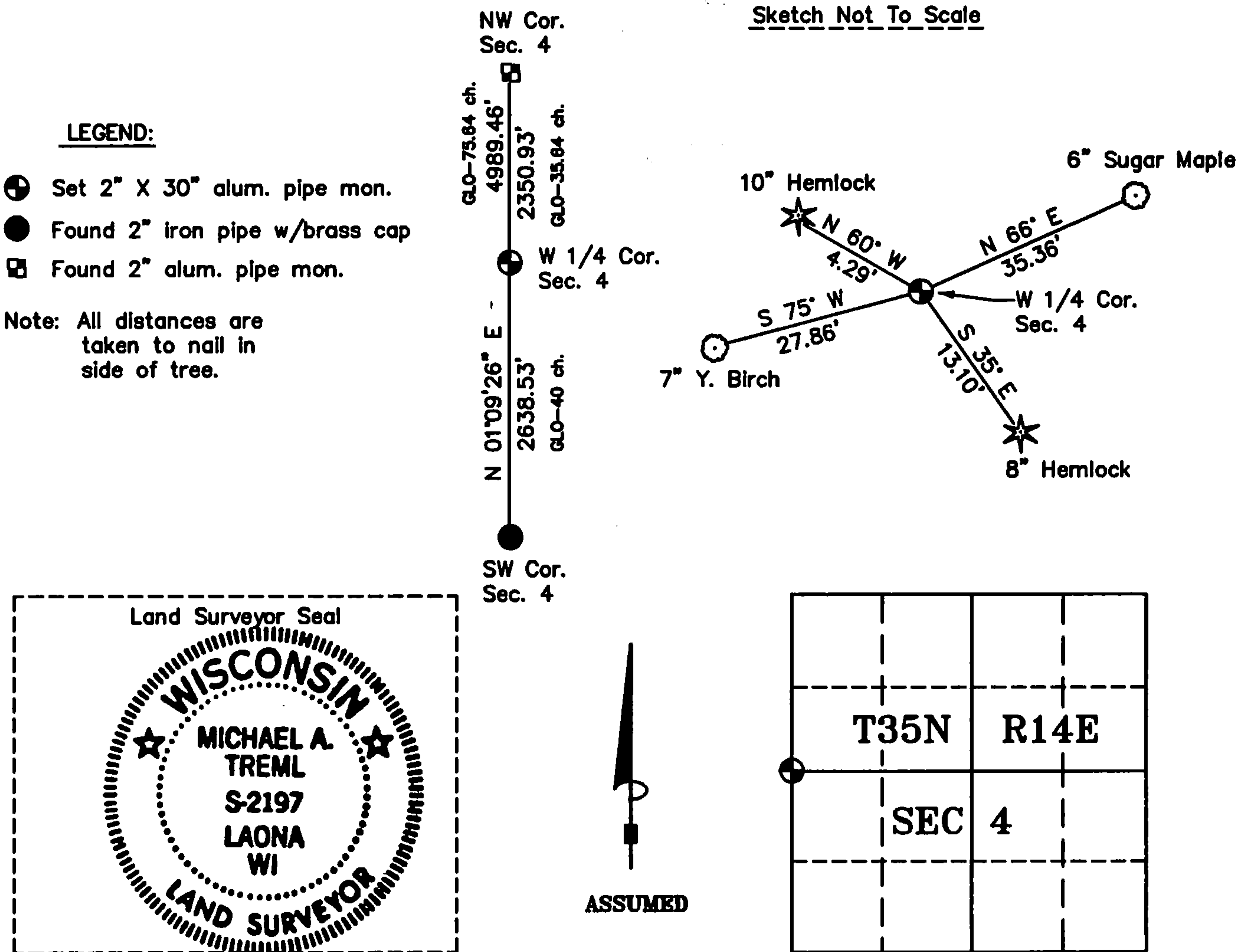
I set a 2" X 30" aluminum pipe monument on line and at proportionate distance between the SW and NW corners of Section 4 and made the following B.T.'s:

Sugar Maple, 6", N 66° E, 35.36 feet  
Hemlock, 8", S 35° E, 13.10 feet  
Y. Birch, 7", S 75° W, 27.86 feet  
Hemlock, 10", N 60° W, 4.29 feet

Corner was: (Check All That Apply)

- ☐ Restored through acceptance of an obliterated evidence location.  
☐ Restored through acceptance of a found perpetuated location.  
☒ Considered a lost corner and reestablished through lost corner proportionate methods (include a plan view drawing showing distances and directions to other Public Land Survey Corners used for proportioning and determining the corner location).  
☐ Restored or reestablished in a location that differs from a previous restoration or reestablishment (include a plan view drawing and indicate what was set and/or found).

Describe the monument and accessories used to perpetuate the location of this corner (include a plan view drawing and indicate what was set and/or found).



I, Michael A. Tremi, RLS  
(type or print name) certify that the corner location shown on this record was determined by me or under my direction and control and that this U.S. Public Land Survey Monument Record is correct and complete to the best of my knowledge and belief.

Michael A. Tremi 5/13/10  
Signature Date

The West 1/4 corner of  
Section 4 T. 35 N., R. 14 E.  
Forest County, WI

Index No. C-9

43514052000

69

REGISTER'S OFFICE  
Forest County, Wis. } 2nd  
Received for record this 2nd day  
of February A.D., 2015 at  
11:40 o'clock A.M. and recorded  
in Vol. Corner Restoration  
page 6-9  
Erika L. Deaton, Deputy  
Register of Deeds  
RS-7150-11 (9/1/66)

CERTIFIED LAND CORNER RESTORATION

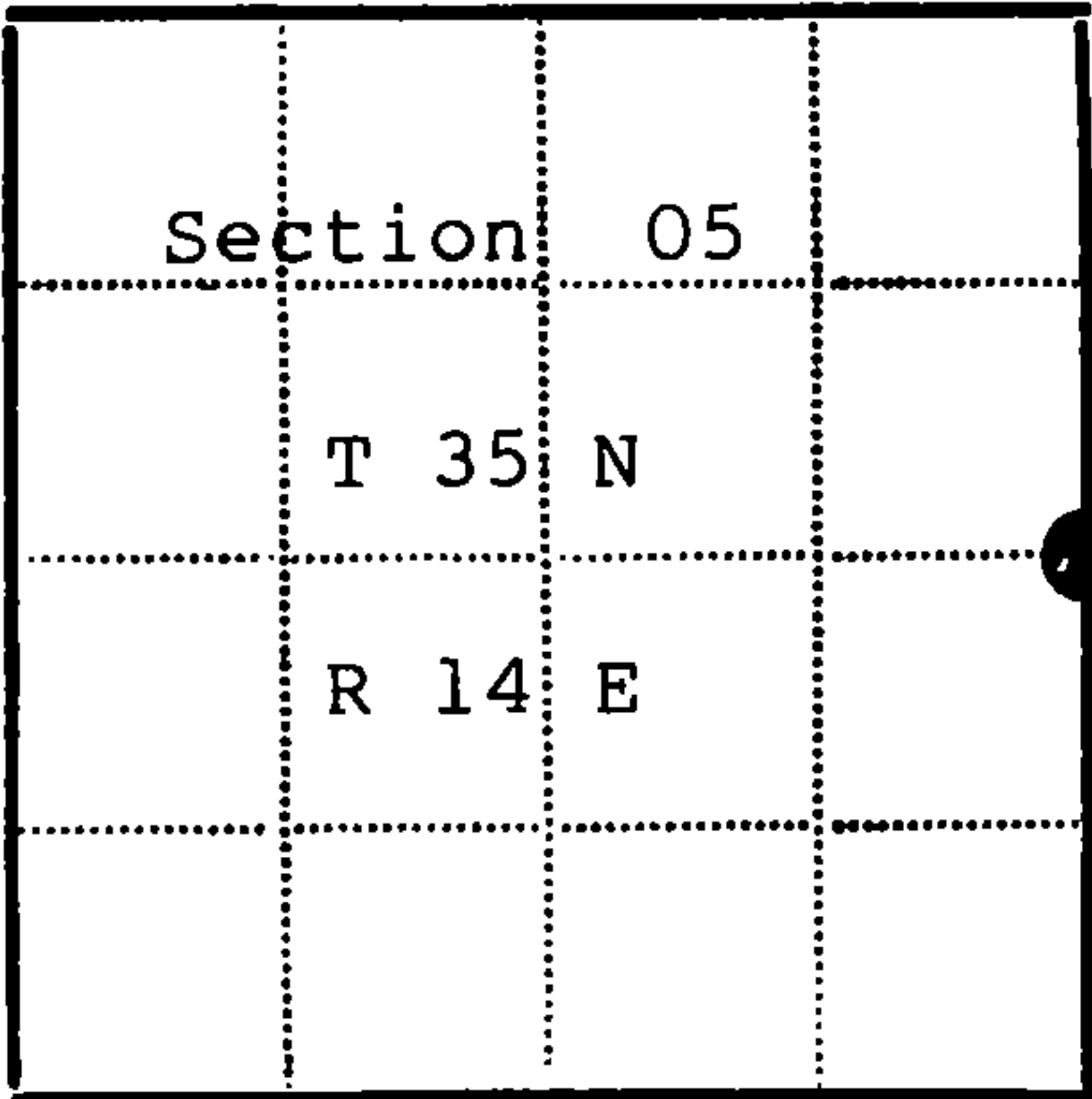
State of Wisconsin }  
County of Forest } ss.

I, Randy R. Erickson, do hereby certify that on the 18th day of Sept., 19 2014  
I found evidence of the East Quarter corner of Section 5  
Township 35 North, Range 14 East, Fourth Principal Meridian, as described  
hereon; and that from this evidence I established a new monument and accessories as described hereon to per-  
petuate the original location of this corner:

Description of original monument and accessories and subsequent restorations:  
1859 James Mc Bride set a wood post and marked Bearing Trees:  
Hemlock 14" S 77° W 5 lks Hemlock 8" N 47° E 26 lks  
2010 RLS # 2197, Mike Treml restored corner by proportionate measure  
and marked Bearing Trees: Perpetuation record on file with Forest County.

Description of corner evidence found:  
Found 2" x 36" aluminum pipe monument set by Treml in 2010, Found Bearing  
Trees as described by Treml Found white PVC pipe 1 foot north of monument.  
2 Hemlock Bearing trees were cut for GPS purposes.

Description of monument and accessories I established to perpetuate the location of this corner:  
Left 2010 monument in place. Extends 9" above ground. Painted remaining  
2010 Bearing Trees:  
Yellow Birch 8" S 85° W 27.84 feet  
Maple 8" N 70° E 35.36 feet  
Marked new Bearing Trees:  
Hemlock 14" N 30° W 37.97 feet  
Steel Sign Post South 0.8 feet  
Established Wisconsin North Zone State Plane Coordinates for this corner:  
N 140056.61 E 2286951.61 NAD 83 2011 U.S. F



● - Corner monument restored  
□ -

Resident witnesses \_\_\_\_\_  
Dated at Park Falls Wisconsin, this 14 day of January  
19 2015  
Signature \_\_\_\_\_ Title Prof. Land Surveyor  
(County Surveyor, Registered Land Surveyor, or other duly authorized official)  
Surveyors Registration No. 1897  
Office of \_\_\_\_\_ County of \_\_\_\_\_  
I hereby certify that the within instrument was filed in this office for record  
on the \_\_\_\_\_ day of \_\_\_\_\_ 19 \_\_\_\_\_, and was filed in Book  
No. \_\_\_\_\_ Page No. \_\_\_\_\_ of County Records.  
Signature \_\_\_\_\_ Title \_\_\_\_\_

Township 35 North, Range 14 East, Section 5, Index No. \_\_\_\_\_, Page No. \_\_\_\_\_