

## U. S. PUBLIC LAND SURVEY MONUMENT RECORD

## INSTRUCTIONS:

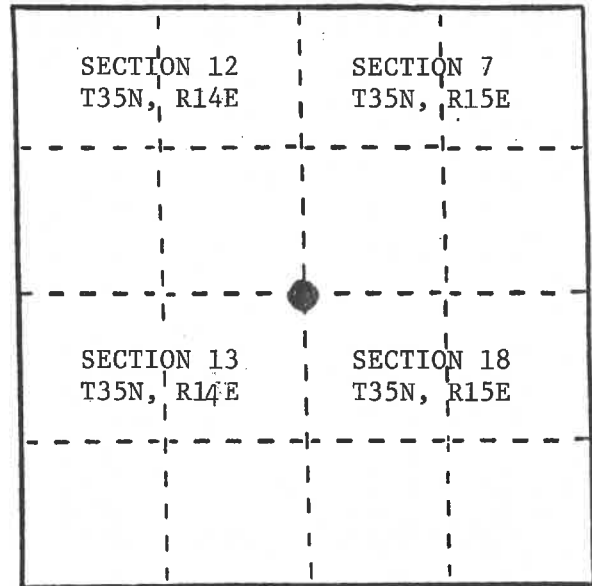
This record shall show the location of the corner and shall include all of the following nine elements (a through i).

- (a) Identify the corner by reference to the U.S. public land survey system.

● = Corner monument restored.

Section Corner to Sections 7, 12, 13 and 18, T35N, R15E, 4th P.M.

REGISTER'S OFFICE  
Forest County, Wis.  
Received for record this 6th day  
of Sept, A.D., 1989 at  
10:25 o'clock A.M. and recorded  
in Vol. CORNER RESTORATIONS  
page 5-1  
Paul Hochmutter  
Register of Deeds.



- (b) Describe any record evidence, monument evidence, occupational evidence, testimonial evidence or any other material evidence you considered, and whether the monument was found or placed.

In 1857 Artemas Curtis established this corner. All evidence being destroyed in the construction and reconstruction of State Highway #32 over the years, the last time in 1985.

In 1980 Forest Service surveyor, William Cochrane, restored this corner and placed a railroad spike in the highway and a reference monument N89°-18.3'W, 91.00 feet. He used this corner to subdivide Sections 12 and 13, T35N, R14E.

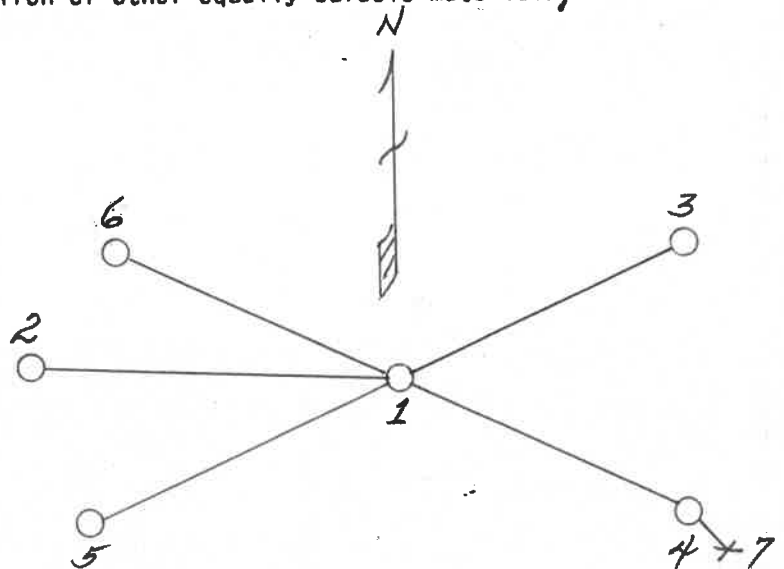
On 7/10/1985 DOT filed with the County Clerk a "Preservation of Landmark" form on this corner whereby four additional Witness Corner Monuments were established.

On 3/23/89 I located the Forest Service Reference Corner and DOT Witness Corners and ran our traverse through DOT Witness Corner 2 and 3. On 7/1/89 I placed a railroad spike in the surface of Highway #32 and placed a steel sign post southeast of DOT Witness Corner #2 .47 feet.

- (c) In the plan view drawing below, provide reference ties to at least 4 witness monuments, or, if the location is within a municipality, to at least 2 witness monuments. (Witness monuments shall be made of concrete, natural stone, iron or other equally durable material.) Describe witness monuments.

- (d) Show a plan view drawing depicting the relevant monuments and reference ties which is sufficient in detail to enable accurate relocation of the corner monument if the corner monument is disturbed. Indicate north.

- 1) Railroad spike
- 2) Forest Service brass tablet on a 2" x 60" iron pipe N89°-18.3'W, 91.00 feet
- 3) DOT Berntsen aluminum monument, WC #1, N52°-51'E, 69.68'
- 4) DOT Berntsen aluminum monument, WC #2, S66°-05'E, 60.04'
- 5) DOT Berntsen aluminum monument, WC #3, S52°-51'W, 73.96'
- 6) DOT Berntsen aluminum monument, WC #4, N66°-05'W, 71.22'
- 7) Steel sign post SE of DOT WC #2, .47'



- (e) Describe any material discrepancy between the location of the corner as restored or reestablished and the location of that corner as previously restored or reestablished by distance and direction. Show the discrepancy on the plan view drawing under (d), above. Show the distances between the corner as previously restored or reestablished and (1) the corner as restored or reestablished, and (2) to at least 2 of the witness monuments shown on the drawing in (d), above.

None

- (f) Was the corner restored through acceptance of (1) an obliterated evidence location, or, (2) a found perpetuated location?

A perpetuated location

- (g&h) Was the corner reestablished through lost corner proportionate methods? If so, show the method, including the directions and distances to other public land survey corners used as evidence or used for proportioning in determining the corner location?

- (i) I, Milo E. Stefan  
(type or print name) certify that the corner location shown on this record was determined by me or under my direction and control and that this U.S. Public Land Survey Monument Record is correct and complete to the best of my knowledge and belief.

Milo E. Stefan  
Signature

July 7, 1989  
Date

Certificate ready for filing:

Dale B. Staeger  
District Ranger

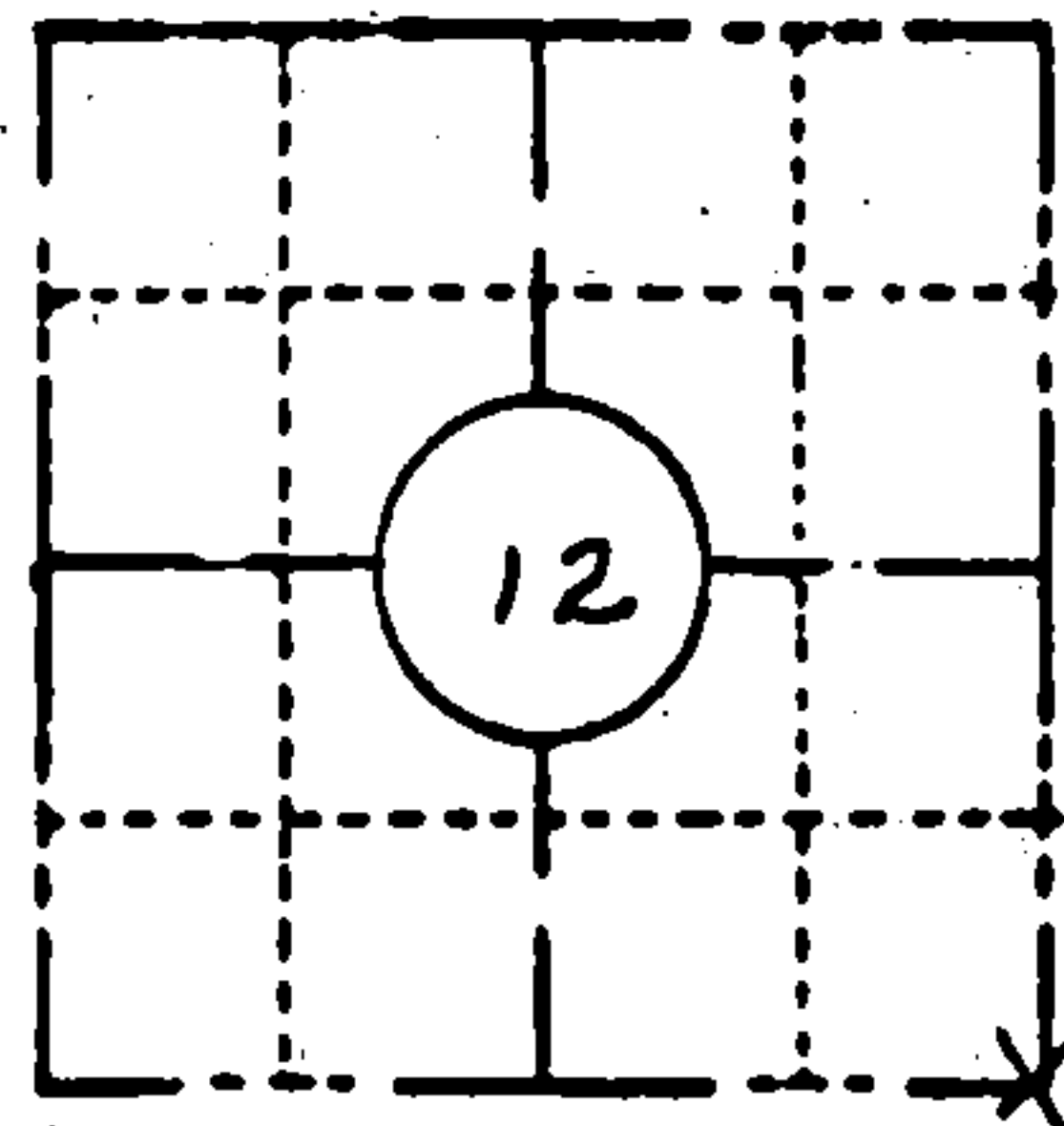


ORIGINAL ON FILE IN CO CLERK'S OFFICE  
COPY HERE FOR REFERENCE

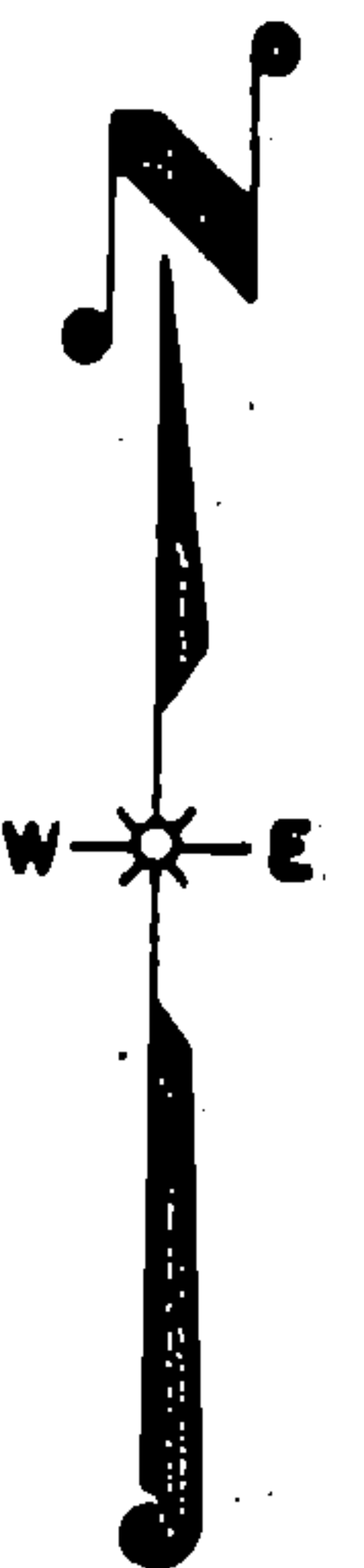
FIELD SURVEY NOTES  
PRESERVATION OF LANDMARKS  
(Pursuant to Section 59.635(7) Wisconsin Statutes  
E-D-707-69

State of Wisconsin / Department of Transportation

COUNTY <b>FOREST</b>		
TOWN <b>LAONA, BLACKWELL</b>		
HIGHWAY <b>STH 32</b>		
SECTION <b>12</b>	TOWNSHIP <b>T 35 N</b>	RANGE <b>R 14 E</b>
TYPE OF LANDMARK <b>R.R. SPIKE SET BY USFS</b>		

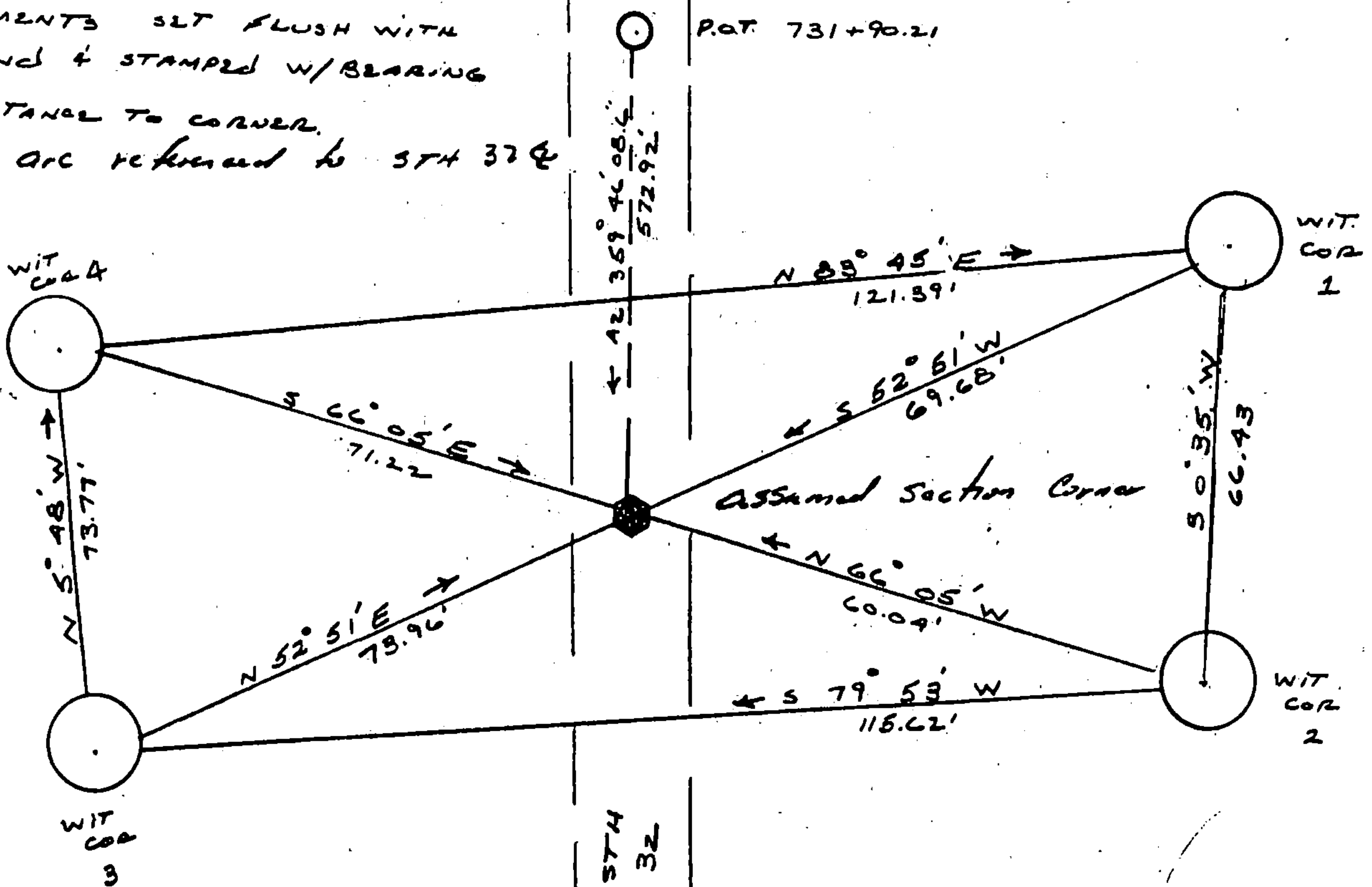


LOCATION SKETCH  
(Location of landmark indicated by "x")



This space for copy of field notes or ties to the above described landmarks

ALL WITNESS MONUMENTS  
ARE D.O.T. BEANSTEN DRIVABLE  
MONUMENTS SET FLUSH WITH  
GROUND & STAMPED W/BEARING  
& DISTANCE TO CORNER.  
B-95 ARE REFERRED TO STH 32 &



FILED UNDER PROJECT <b>9131-03-70</b>		
DISTRICT OFFICE NUMBER <b>03-07</b>	CITY <b>RHINELANDER</b>	COUNTY <b>ONEIDA</b>
LOCATED OR ESTABLISHED BY NAME <b>ROBERT B. JOHNSON</b>		
TITLE <b>SURVEY CREW CHIEF</b> DATE <b>5-14-85</b> <b>under the direct supervision of MICHAEL</b> <b>H955 500809</b>		

COUNTY CLERK'S OFFICE COUNTY OF <b>Forest</b> WISCONSIN } 85	
DATE RECEIVED FOR RECORD <b>7-10-85</b>	DATE COPY SENT TO COUNTY SURVEYOR <b>N/A</b>
SIGNATURE OF COUNTY CLERK <b>Dora C. James</b>	

PRESERVATION OF LANDMARKS

PAGE \_\_\_\_\_

43514120000

J-25