

U. S. PUBLIC LAND SURVEY MONUMENT RECORD

INSTRUCTIONS:

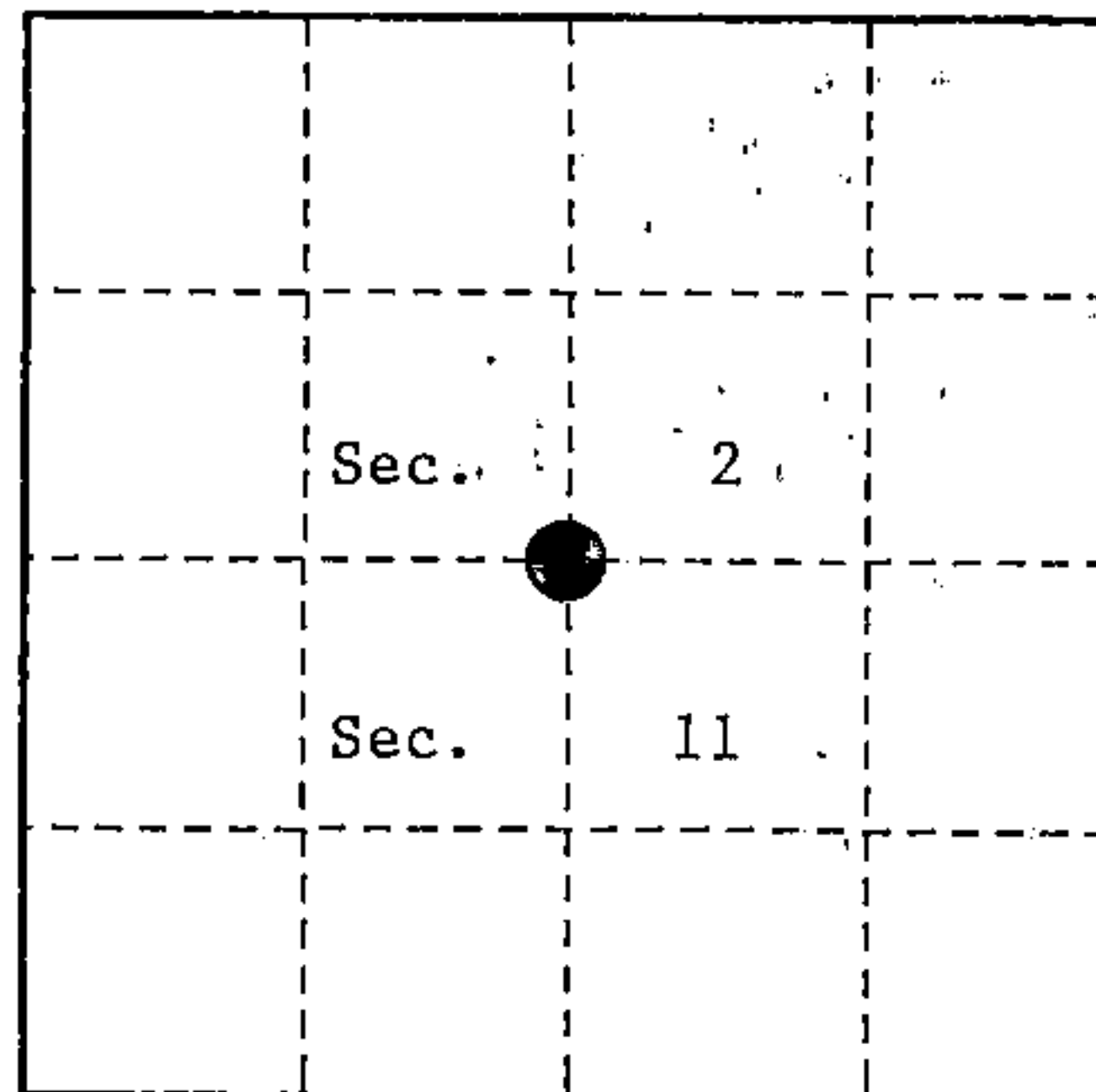
This record shall show the location of the corner and shall include all of the following nine elements (a through i).

- (a) Identify the corner by reference to the U.S. public land survey system.
 ○ = Corner monument restored.

Quarter Corner to Sections 2 & 11,
 T.35N., R.15E., Forest County, Wisconsin.

State Plane Coordinates
 Wisconsin North Zone
 137765.57176-N
 2331724.25625-E

Geographic Coordinates
 45-32-08.10842-N
 088-34-57.13978-W



- (b) Describe any record evidence, monument evidence, occupational evidence, testimonial evidence or any other material evidence you considered, and whether the monument was found or placed.

Original survey in 1859 by James McBride. Set wood post and the following bearing trees; Spruce, 4", N.22°W., 14 links, Spruce, 5", S.25°E., 6 links, 15 chains East leave swamp.

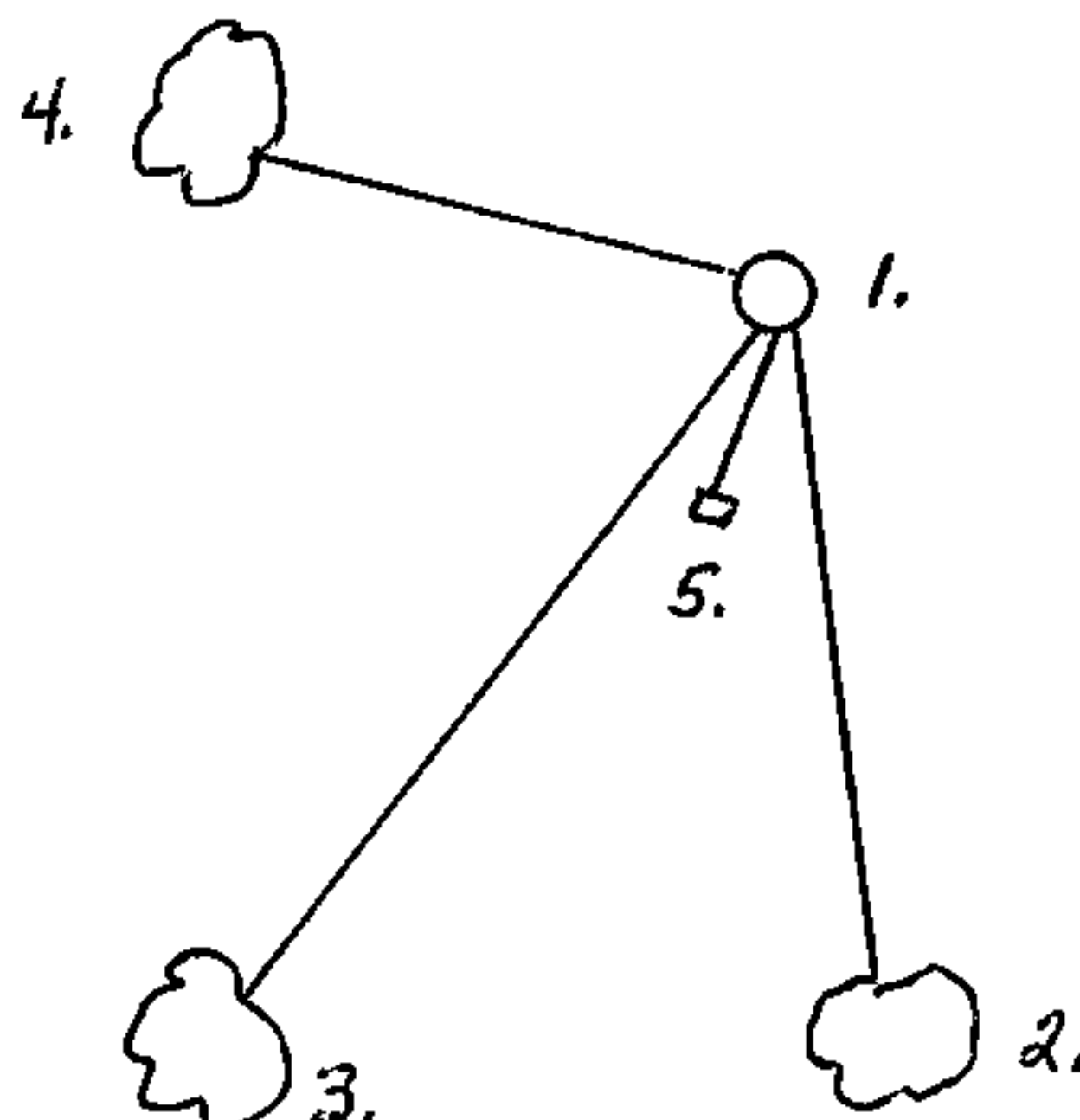
In 1904 Nathan Smith (RLS), surveyed Section 11 and found the original bearing trees broken over. Distance from the Section Corner to the West is 38.69 chains (2552.88 feet). Distance from the Section Corner to the East 39.77 chains (2624.82 feet). Made new B.T.'s; Spruce, 4", N.46°E., 16 links, Spruce, 4", S.07°W., 19 links.

On 6-27-94, Alan Harrison (RLS), restored the corner at proportionated distance to Nathan Smith's measurements in his 1904 survey of Section 11. The corner position is also on line between opposing Section Corners. No other corner evidence was recovered. At the corner position set a 2½" x 60" Aluminum Monument with a tablet stamped to identify corner. Made new bearing trees; Tamarack, 7", S.07°E., 26.25 feet, Tamarack, 7", S.36°W., 60.08 feet, Tamarack, 7", N.70°W., 13.31 feet, Steel Sign Post, Southwest, 0.60 feet.

- (c) In the plan view drawing below, provide reference ties to at least 4 witness monuments, or, if the location is within a municipality, to at least 2 witness monuments. (witness monuments shall be made of concrete, natural stone, iron or other equally durable material.)

- (d) Show a plan view drawing depicting the relevant monuments and reference ties which is sufficient in detail to enable accurate relocation of the corner monument if the corner monument is disturbed. Indicate north.

1. 2½" x 60" Aluminum Monument with tablet stamped to identify corner.
2. Tamarack, 7", S.07°E., 26.25 feet.
3. Tamarack, 7", S.36°W., 60.08 feet.
4. Tamarack, 7", N.70°W., 13.31 feet.
5. Steel Sign Post, Southwest, 0.60 feet.



(e) Describe any material discrepancy between the location of the corner as restored or reestablished and the location of that corner as previously restored or reestablished by distance and direction. Show the discrepancy on the plan view drawing under (d), above. Show the distances between the corner as previously restored or reestablished and (1) the corner as restored or reestablished, and (2) to at least 2 of the witness monuments shown on the drawing in (d), above.

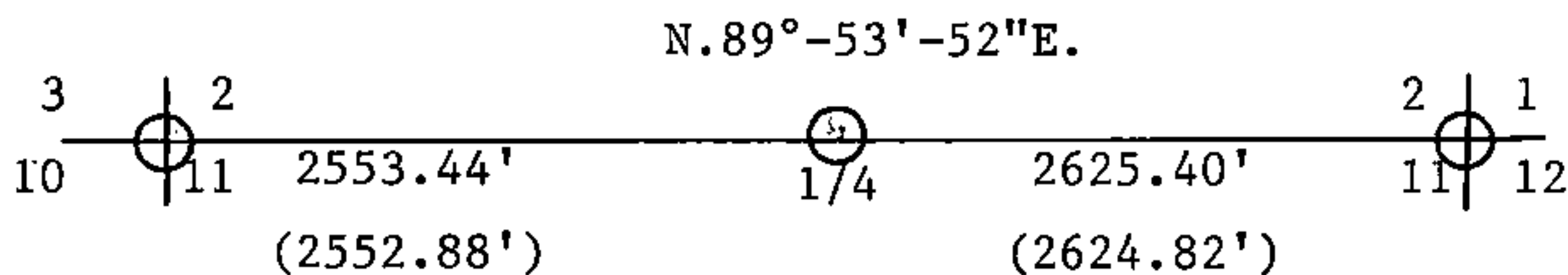
None.

(f) Was the corner restored through acceptance of (1) an obliterated evidence location, or, (2) a found perpetuated location?

No.

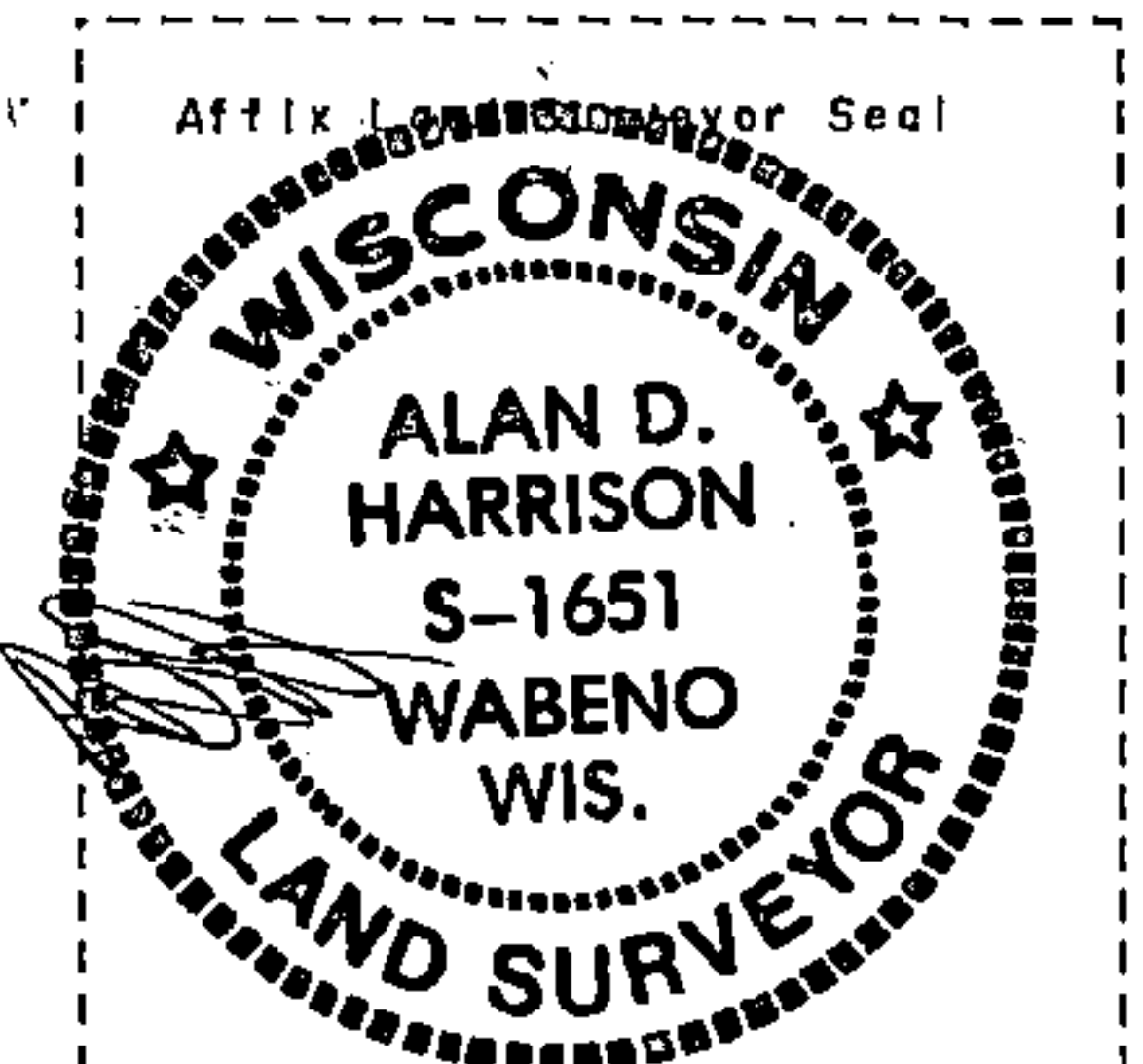
(g & h) Was the corner reestablished through lost corner proportionate methods? If so, show the method, including the directions and distances to other public land survey corners used as evidence or used for proportioning in determining the corner location?

Yes.



() Nathan Smith's 1904 distance

REGISTER'S OFFICE
Forest County, Wis.
Received for record this 23rd day
of November A.D., 19 94 at
9:00 o'clock A.M. and recorded
in Vol. Corner Restorations
page 3515-E-19
Paul Chittenden Deputy
Register of Deeds



(1) I, Alan D. Harrison

(type or print name) certify that the corner location shown on this record was determined by me or under my direction and control and that this U.S. Public Land Survey Monument Record is correct and complete to the best of my knowledge and belief.

Signature

Date

CERTIFICATE READY FOR FILING:

Sue Vag
District Ranger

Document Number

189313

REGISTER'S OFFICE
Forest County, Wis.

Received for record this 18th day
of November A.D., 2005 at
3:55 o'clock P. M. and recorded
in Vol. Corner Restoration
page E-19

Kaye Swanson, Deputy
Register of Deeds

U.S. PUBLIC LAND SURVEY MONUMENT RECORD

(AS REQUIRED BY S. A-E 5.02, WI ADM. CODE)

HISTORY OF ORIGINAL CORNER ESTABLISHMENT AND SUBSEQUENT RESTORATIONS AND DESCRIPTION OF ANY RECORD, MONUMENT, OCCUPATIONAL, TESTIMONIAL, OR OTHER EVIDENCE CONSIDERED:

1859 - JAMES McBRIDE, SURVEYOR, SET POST

SET THE FOLLOWING WITNESSES:
SPRUCE 4" N22°W 14 LINKS
SPRUCE 5" S25°E 6 LINKS

1904 - NATHAN SMITH, FOUND THE ORIGINAL BT'S BROKEN OVER. DISTANCE FROM THE SECTION CORNER TO THE WEST IS 38.69 CHAINS (2552.88 FEET). DISTANCE FROM THE SECTION CORNER TO THE EAST 39.77 CHAINS (2624.82 FEET).

SET THE FOLLOWING WITNESSES:
SPRUCE 4" N46°E 16 LINKS
SPRUCE 4" S07°W 19 LINKS

1994 - ALAN HARRISON, SURVEYOR, S-1651, RESTORED THE CORNER AT PROPORTIONATE DISTANCE TO NATHAN SMITH'S MEASUREMENTS IN HIS 1904 SURVEY OF SECTION 11. THE CORNER POSITION IS ALSO ON LINE BETWEEN OPPOSING SECTION CORNERS. NO OTHER CORNER EVIDENCE WAS RECOVERED. AT THE CORNER POSITION SET A 2-1/2" X 60" ALUMINUM MONUMENT WITH A TABLET STAMPED TO IDENTIFY CORNER.

SET THE FOLLOWING WITNESSES:
TAMARACK 7" S07°E 26.25 FEET
TAMARACK 7" S36°W 60.08 FEET
TAMARACK 7" N70°W 13.31 FEET
STEEL SIGN POST SOUTHWEST 0.60 FEET

CORNER WAS: (CHECK ALL THAT APPLY)

- ☐ RESTORED THROUGH ACCEPTANCE OF AN OBLITERATED LOCATION
☒ RESTORED THROUGH ACCEPTANCE OF A FOUND PERPETUATED LOCATION
☐ CONSIDERED A LOST CORNER AND REESTABLISHED THROUGH LOST CORNER PROPORTIONATE METHODS (INCLUDING A PLAN VIEW DRAWING SHOWING DISTANCES AND DIRECTIONS TO OTHER PUBLIC LAND SURVEY CORNERS USED FOR PROPORTIONING AND DETERMINING THE CORNER LOCATION)
☐ RESTORED OF REESTABLISHED IN A LOCATION THAT DIFFERS FROM A PREVIOUS RESTORATION OF REESTABLISHMENT (INCLUDE A PLAN VIEW DRAWING AND INDICATE WHAT WAS SET AND/OR FOUND)

DESCRIBE THE MONUMENT AND ACCESSORIES USED TO PERPETUATE THE LOCATION OF THIS CORNER. (INCLUDE A PLAN VIEW DRAWING AND INDICATE WHAT WAS SET AND/OR FOUND)

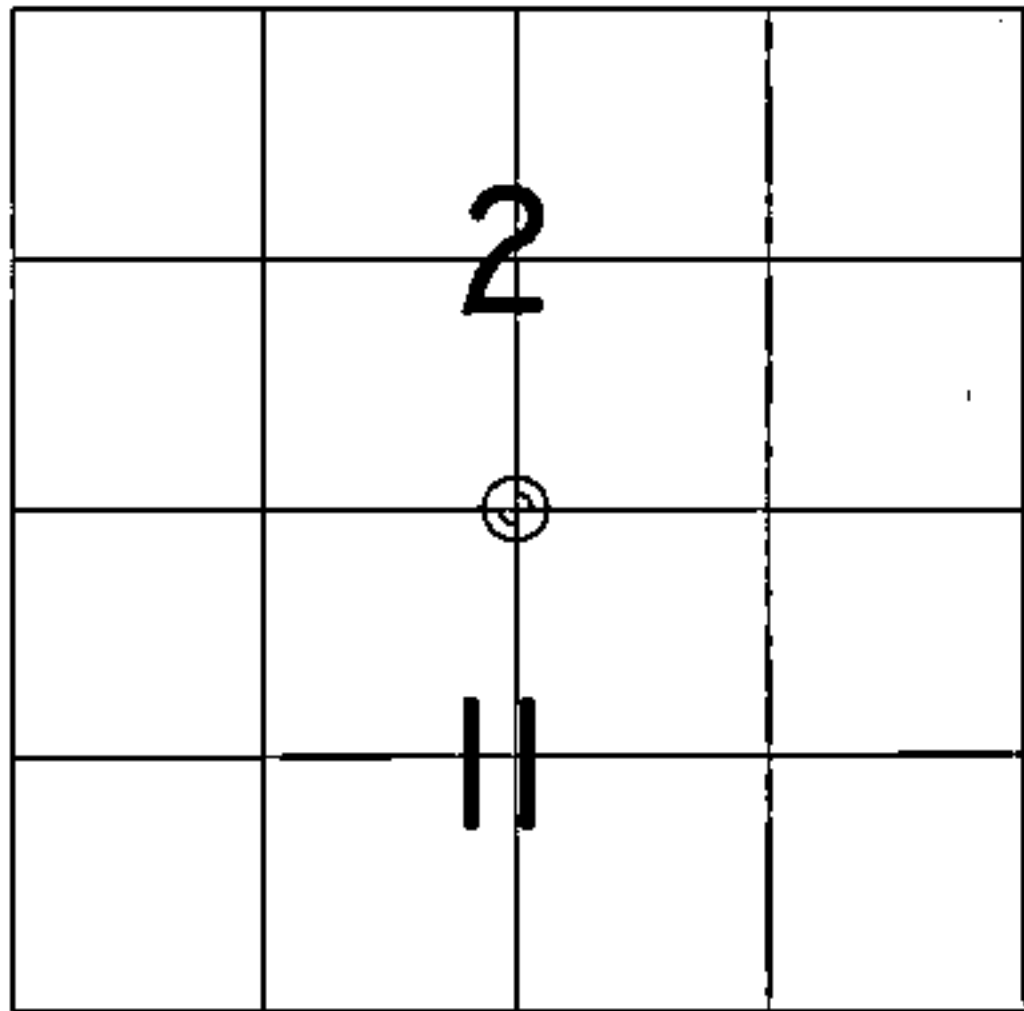
FOUND ALUMINUM MONUMENT FLUSH WITH GROUND WITH CAP STAMPED RLS 1651

FOUND THE FOLLOWING WITNESSES:
TAMARACK 7" N73°W 13.33 FEET - FOUND NAIL IN TREE
TAMARACK 7" S11°E 26.23 FEET - FOUND NAIL IN TREE
TAMARACK 7" S36°W 60.07 FEET - FOUND NAIL IN TREE
STEEL SIGN SOUTHWEST 0.60 FEET

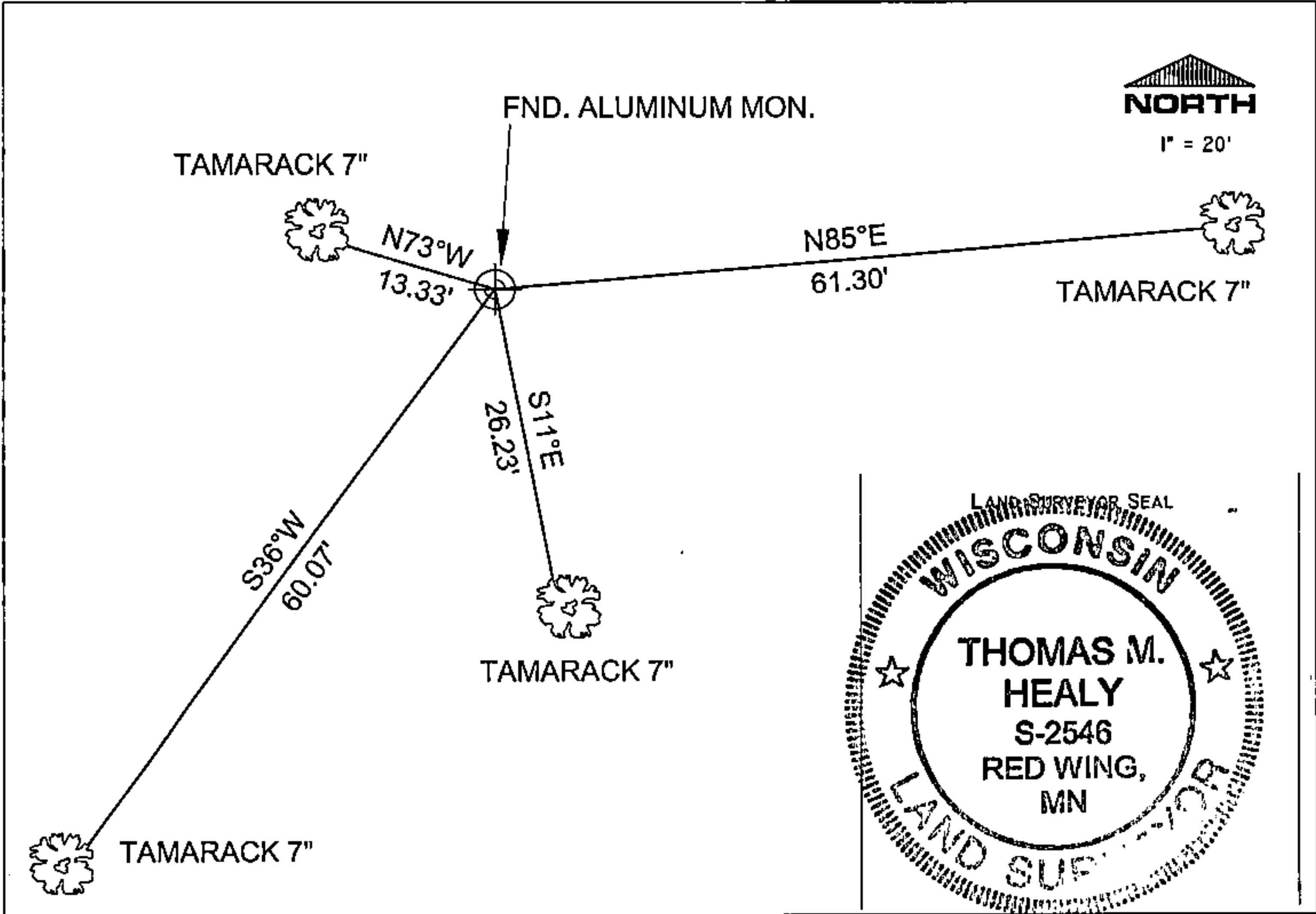
SET THE FOLLOWING WITNESSES:
TAMARACK 7" N85°E 61.30 FEET - SET NAIL IN TREE

ALL TREES HAVE CHEST & STUMP BLAZES.

THE SOUTH 1/4
CORNER OF SECTION 2,
T. 35 N., R. 15 E.,
FOREST COUNTY, WISCONSIN



⊕ = LOCATION OF CORNER



I, THOMAS M. HEALY R.L.S. 2546

(TYPE OR PRINT NAME) CERTIFY THAT THE CORNER LOCATION SHOWN ON THIS ABOVE RECORD WAS DETERMINED BY ME OR UNDER MY DIRECTION AND CONTROL AND THAT THIS U.S. PUBLIC LAND SURVEY MONUMENT RECORD IS CORRECT AND COMPLETE TO THE BEST OF MY KNOWLEDGE AND BELIEF.

INDEX No. E-19

Thomas M. Healy 11-17-05
SIGNATURE DATE

43515020020

E-19