

CERTIFIED LAND CORNER RESTORATION

State of Wisconsin }
County of Forest } ss.

I Milo E. Stefan, do hereby certify that on the 11th day of August, 1983, I found evidence of the West Quarter corner of Section 27 Township 35 North, Range 15 East, Fourth Principal Meridian, as described hereon; and that from this evidence I established a new monument and accessories as described hereon to perpetuate the original location of this corner:

Description of original monument and accessories and subsequent restorations:

Surveyed in 1859 by James McBride
40.00 chains, set wood post
Sugar, 10", West, 20 links
Hemlock, 8", N.64°E., 16 links

Description of corner evidence found:

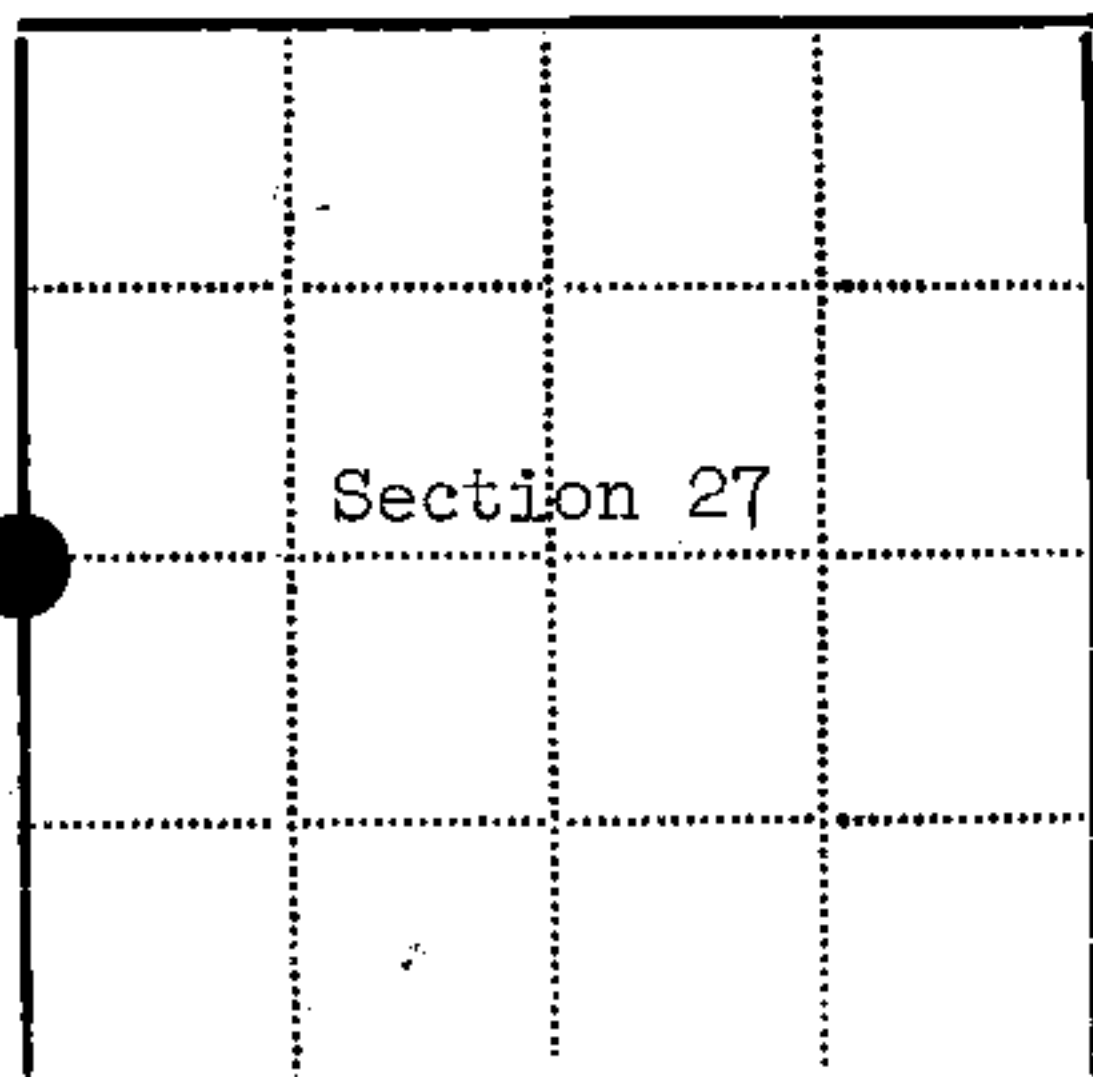
No original evidence found
Local Evidence: Pine (stump), S.47°E., 46 feet from face to 1" iron pipe set just below surface in south rut of drive to hunting shack. This Pine stump was marked by N. A. Smith on November 8, 1910; also, found location poster attached to 3" Cedar post on north edge of driveway.

Description of monument and accessories I established to perpetuate the location of this corner:

Placed a 2" x 36" aluminum monument with tablet stamped as follows:
T35N, R15E, S28, 1/4, S27, 1983, RLS-1558, 1983, RLS-1558
From which the following bear:
Basswood, 5", N.34°E., 59.31 feet
White Spruce, 14", S.62°E., 129.82 feet
Power Pole #35-15, 28R2, S.82°W., 28.48 feet
Steel Sign Post, South, 4.40 feet



DOCUMENT NO.
124188



● - Corner monument restored
□ -

Resident witnesses.....

Dated at Rhinelanders Wisconsin, this day of 1983.

Signature Milo E. Stefan Title Land Surveyor
(County Surveyor, Registered Land Surveyor, or other duly authorized official)

Surveyors Registration No. RLS-1558

Office of Register of Deeds County of Forest

I hereby certify that the within instrument was filed in this office for record on the 12th day of September 1983, and was filed in Book No. Page No. of County Records.

Signature Eugene Strategos Title Register of Deeds

Township 35 North, Range 15 East, Section 27, Index No. T-13, Page No. B-7, P-65

43515 282000

113

Document Number

191724

REGISTER'S OFFICE
Forest County, Wis.

Received for record this 3rd day
of AUGUST A.D., 2006 at
8:45 o'clock A M. and recorded
in Vol. CORNER RESTORATIONS
page T-13

Paul H. Schaeffer
Register of Deeds

U.S. PUBLIC LAND SURVEY MONUMENT RECORD

(AS REQUIRED BY S. A-E 5.02, WI ADM. CODE)

HISTORY OF ORIGINAL CORNER ESTABLISHMENT AND SUBSEQUENT RESTORATIONS AND DESCRIPTION OF ANY RECORD, MONUMENT, OCCUPATIONAL, TESTIMONIAL, OR OTHER EVIDENCE CONSIDERED:

1859 - JAMES McBRIDE, SURVEYOR, SET POST

SET THE FOLLOWING WITNESSES:
SUGAR MAPLE 10" WEST 20 LINKS
HEMLOCK 8" N64°E 16 LINKS

1983 - CERTIFIED LAND CORNER RESTORATION DOC #124188. MILO E. STEFAN, SURVEYOR, S-1558, FOUND LOCAL EVIDENCE: PINE (STUMP), S47°E, 46 FEET FROM FACE TO 1" IRON PIPE SET JUST BELOW SURFACE IN SOUTH RUT OF DRIVE TO HUNTING SHACK. THIS PINE STUMP WAS MARKED BY N.A. SMITH ON NOVEMBER 8, 1910; ALSO, FOUND LOCATION POSTER ATTACHED TO 3" CEDAR POST ON NORTH EDGE OF DRIVEWAY. PLACED A 2" x 36" ALUMINUM MONUMENT WITH TABLET STAMPED AS FOLLOWS:
"T35N, R15E, S28, 1/4, S27, 1983, RLS-1558, 1983, RLS-1558"

SET THE FOLLOWING WITNESSES:
BASSWOOD 5" N34°E 59.31 FEET
WHITE SPRUCE 14" S62°E 129.82 FEET
P. POLE #35-15, 28R2 S82°W 28.48 FEET
STEEL SIGN POST SOUTH 4.40 FEET

2005 - WISDOT PLANS 9334-02-00 SHOWS A FOUND ALUMINUM MONUMENT.

CORNER WAS: (CHECK ALL THAT APPLY)

- ☐ RESTORED THROUGH ACCEPTANCE OF AN OBLITERATED LOCATION
☒ RESTORED THROUGH ACCEPTANCE OF A FOUND PERPETUATED LOCATION
☐ CONSIDERED A LOST CORNER AND REESTABLISHED THROUGH LOST CORNER PROPORTIONATE METHODS (INCLUDING A PLAN VIEW DRAWING SHOWING DISTANCES AND DIRECTIONS TO OTHER PUBLIC LAND SURVEY CORNERS USED FOR PROPORTIONING AND DETERMINING THE CORNER LOCATION)
☐ RESTORED OF REESTABLISHED IN A LOCATION THAT DIFFERS FROM A PREVIOUS RESTORATION OF REESTABLISHMENT (INCLUDE A PLAN VIEW DRAWING AND INDICATE WHAT WAS SET AND/OR FOUND)

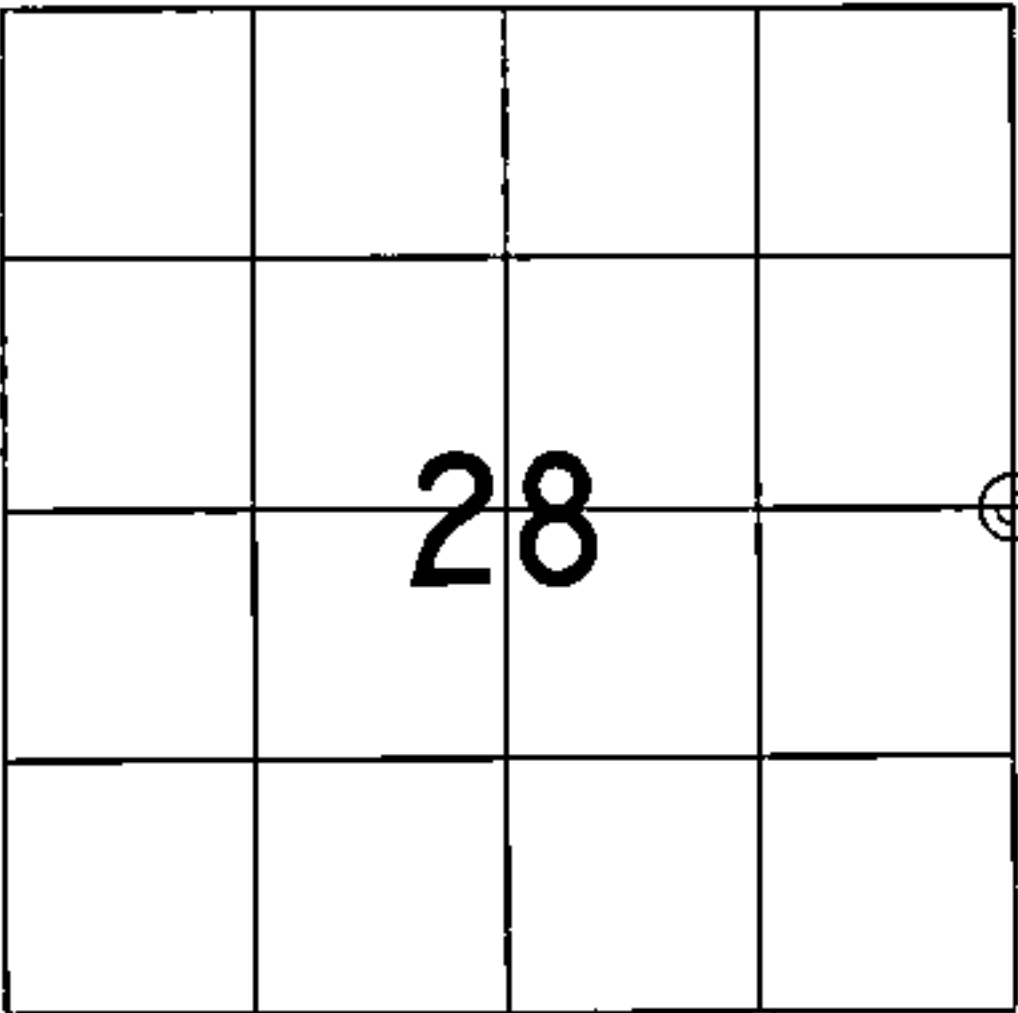
DESCRIBE THE MONUMENT AND ACCESSORIES USED TO PERPETUATE THE LOCATION OF THIS CORNER. (INCLUDE A PLAN VIEW DRAWING AND INDICATE WHAT WAS SET AND/OR FOUND)

2006 - ZACHARY J. STEVENS, SURVEYOR, S-2467-008, FOUND 1.5" O.D. PIPE DOWN 1.5'.
FOUND 1.5" PIPE APPEARS TO BE PREVIOUSLY SET ALUMINUM MONUMENT w/TABLET MISSING. PULLED CLOTH TAPE TO BASSWOOD & WHITE SPRUCE TO VERIFY POSITION.

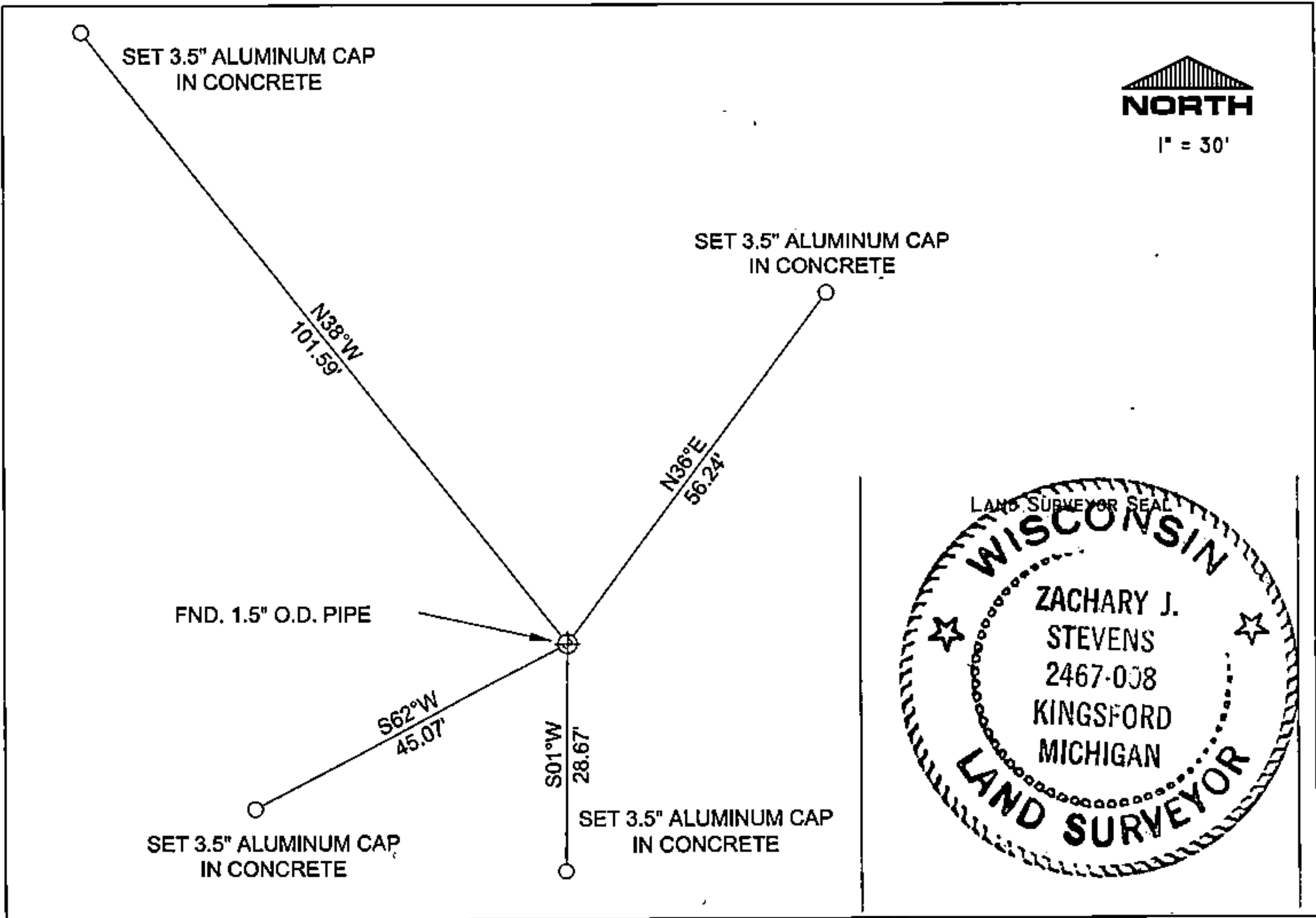
WISDOT SET THE FOLLOWING WITNESSES:
Z. STEVENS MEASURED THE FOLLOWING:

3.5" MONUMENT CAP IN CONCRETE N38°W 101.59 FEET
3.5" MONUMENT CAP IN CONCRETE N36°E 56.24 FEET
3.5" MONUMENT CAP IN CONCRETE S01°W 28.67 FEET
3.5" MONUMENT CAP IN CONCRETE S62°W 45.07 FEET

THE EAST 1/4
CORNER OF SECTION 28,
T. 35 N., R. 15 E.,
FOREST COUNTY, WISCONSIN



⊕ = LOCATION OF CORNER



I, ZACHARY J. STEVENS R.L.S. S-2467-008

(TYPE OR PRINT NAME) CERTIFY THAT THE CORNER LOCATION SHOWN ON THIS ABOVE RECORD WAS DETERMINED BY ME OR UNDER MY DIRECTION AND CONTROL AND THAT THIS U.S. PUBLIC LAND SURVEY MONUMENT RECORD IS CORRECT AND COMPLETE TO THE BEST OF MY KNOWLEDGE AND BELIEF.

INDEX No. T-13

Zachary J. Stevens 7/31/06
SIGNATURE DATE

43519 2820 00

T-13