

DOCUMENT NUMBER
136604

U. S. PUBLIC LAND SURVEY MONUMENT RECORD.

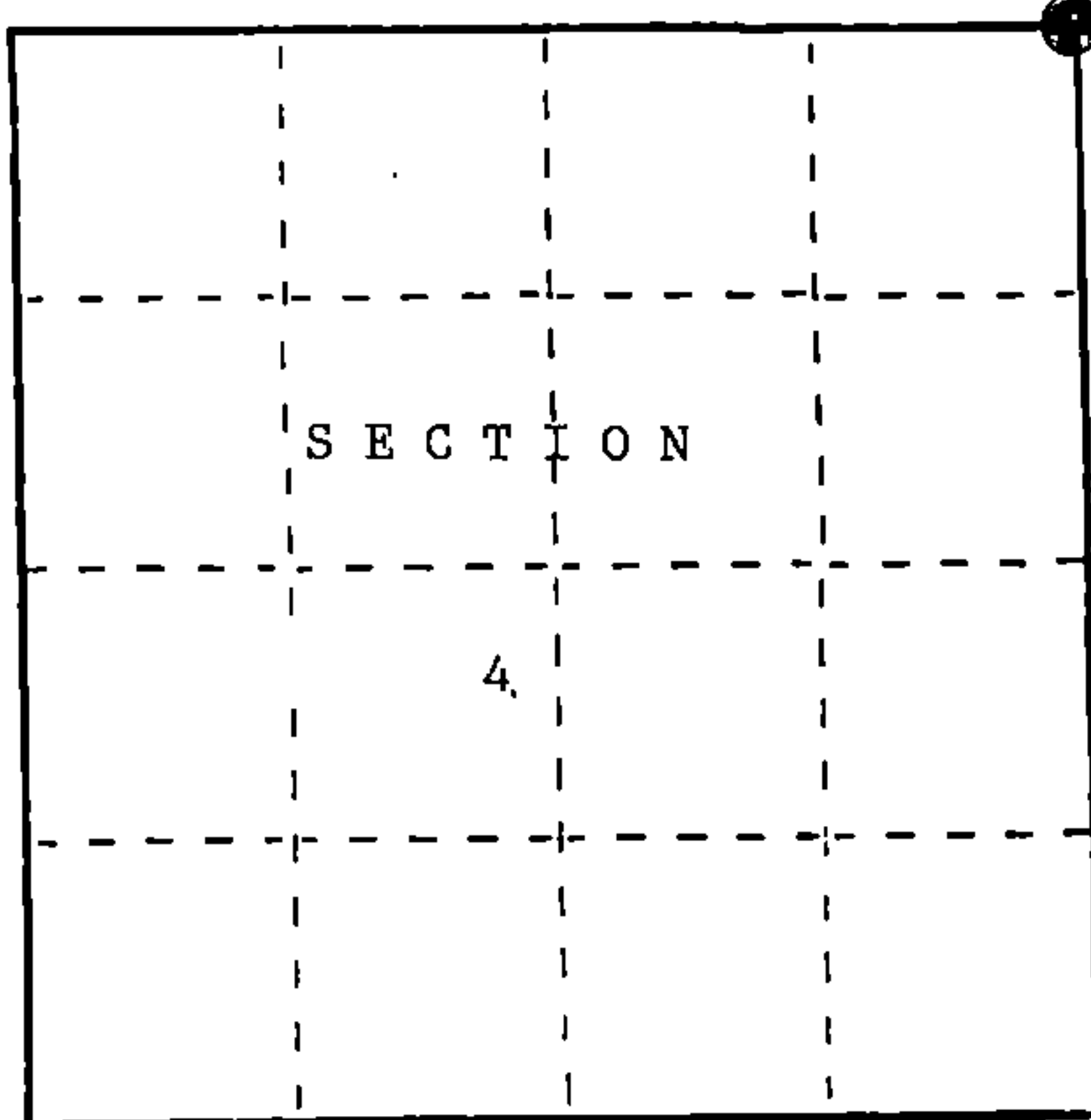
INSTRUCTIONS: This record shall show the location of the corner and shall include all of the following nine elements (a through i).

- (a) Identify the corner by reference to the U.S. public land survey system.

○ = Corner monument restored.

Section Corner Common to Sections 3, 4, 33 and 34, T34-35N, R15E, Forest County, Wisconsin.

REGISTER'S OFFICE
Forest County, Wis.
Received for record this 9th day
of December A.D., 1988 at
2:50 o'clock P.M. and recorded
In Vol. CORNER RESTORATIONS
page A-13
Paul Aschenbrenner
Register of Deeds



- (b) Describe any record evidence, monument evidence, occupational evidence, testimonial evidence or any other material evidence you considered, and whether the monument was found or placed.

In 1957, A. Curtis set a wood post for the corner and the following corner references:

Sugar Maple	18"	N42°W	55 lks.	Sugar Maple	18"	N67°E	18 lks.
Sugar Maple	16"	S40°E	29 lks.	Sugar Maple	16"	S64°W	28 lks.

In Oct. 1910, N. H. Smith recovered the stumps and where a wood post stood. Set a wood post for the corner and the following corner references:

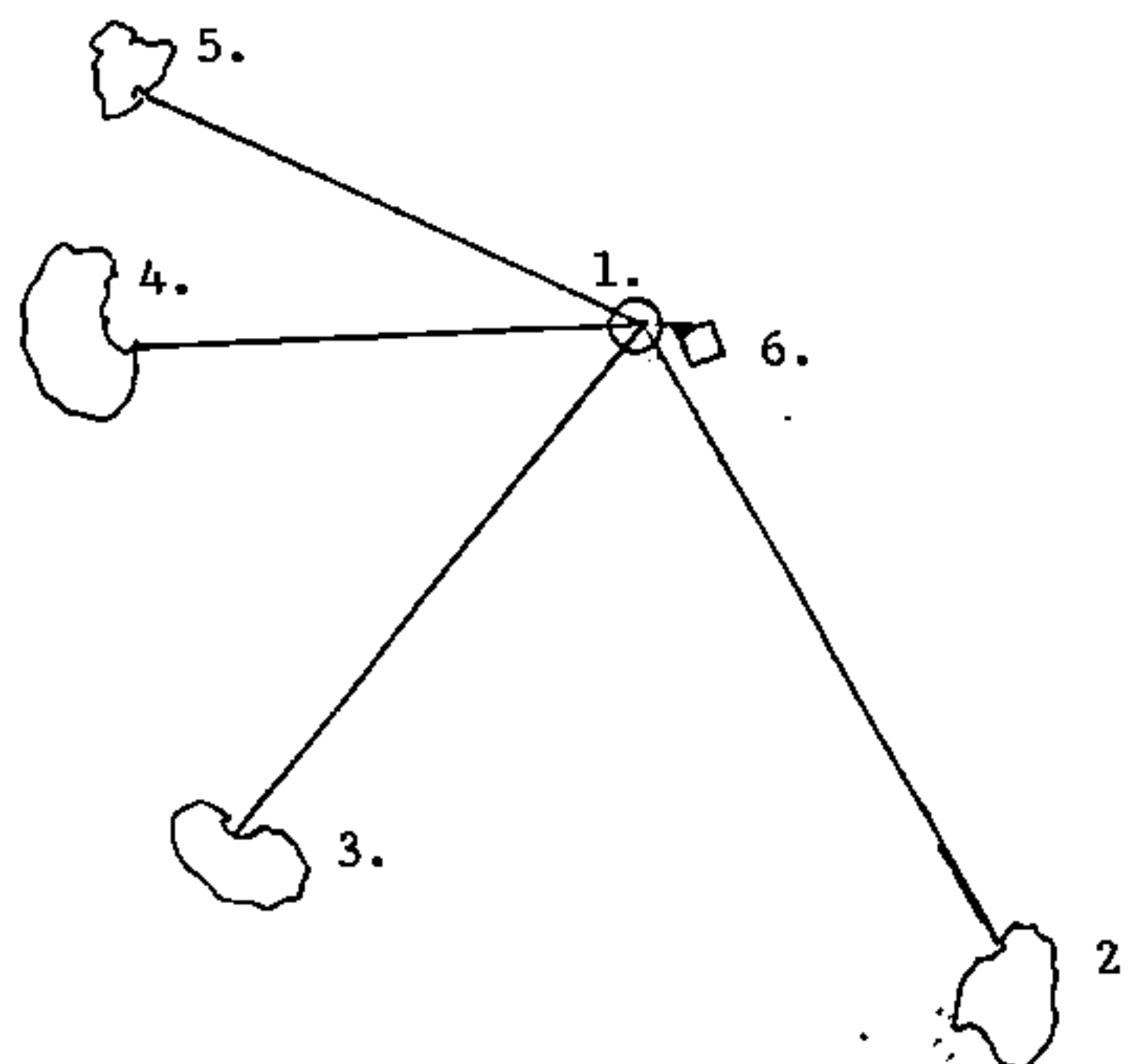
Elm	6"	N81 1/4°E	24 lks.	Basswood	7"	N49 3/4°W	3 lks.
-----	----	-----------	---------	----------	----	-----------	--------

In 1988, Schulke found a 16" dia. Elm tree and no other evidence found due to heavy bulldozing in the area for the road. Placed a 2 1/2" X 36" aluminum monument 0.6 ft. below the surface of a two track.

- (c) In the plan view drawing below, provide reference ties to at least 4 witness monuments, or, if the location is within a municipality, to at least 2 witness monuments. (Witness monuments shall be made of concrete, natural stone, iron or other equally durable material.) Describe witness monuments.

- (d) Show a plan view drawing depicting the relevant monuments and reference ties which is sufficient in detail to enable accurate relocation of the corner monument if the corner monument is disturbed. Indicate north.

1. 2 1/2" X 36" aluminum magnetic cap monument stamped to identify the corner.
2. Sugar Maple 6" S46°E 53.28 ft.
3. Hickory 10" S39°W 51.63 ft.
4. White Ash 7" S87°W 42.18 ft.
5. Sugar Maple 5" N65°W 44.05 ft.
6. Steel sign post East 6.4 ft.



43515330000

A-13 34-15

A-13

- (e) Describe any material discrepancy between the location of the corner as restored or reestablished and the location of that corner as previously restored or reestablished by distance and direction. Show the discrepancy on the plan view drawing under (d), above. Show the distances between the corner as previously restored or reestablished and (1) the corner as restored or reestablished, and (2) to at least 2 of the witness monuments shown on the drawing in (d), above.

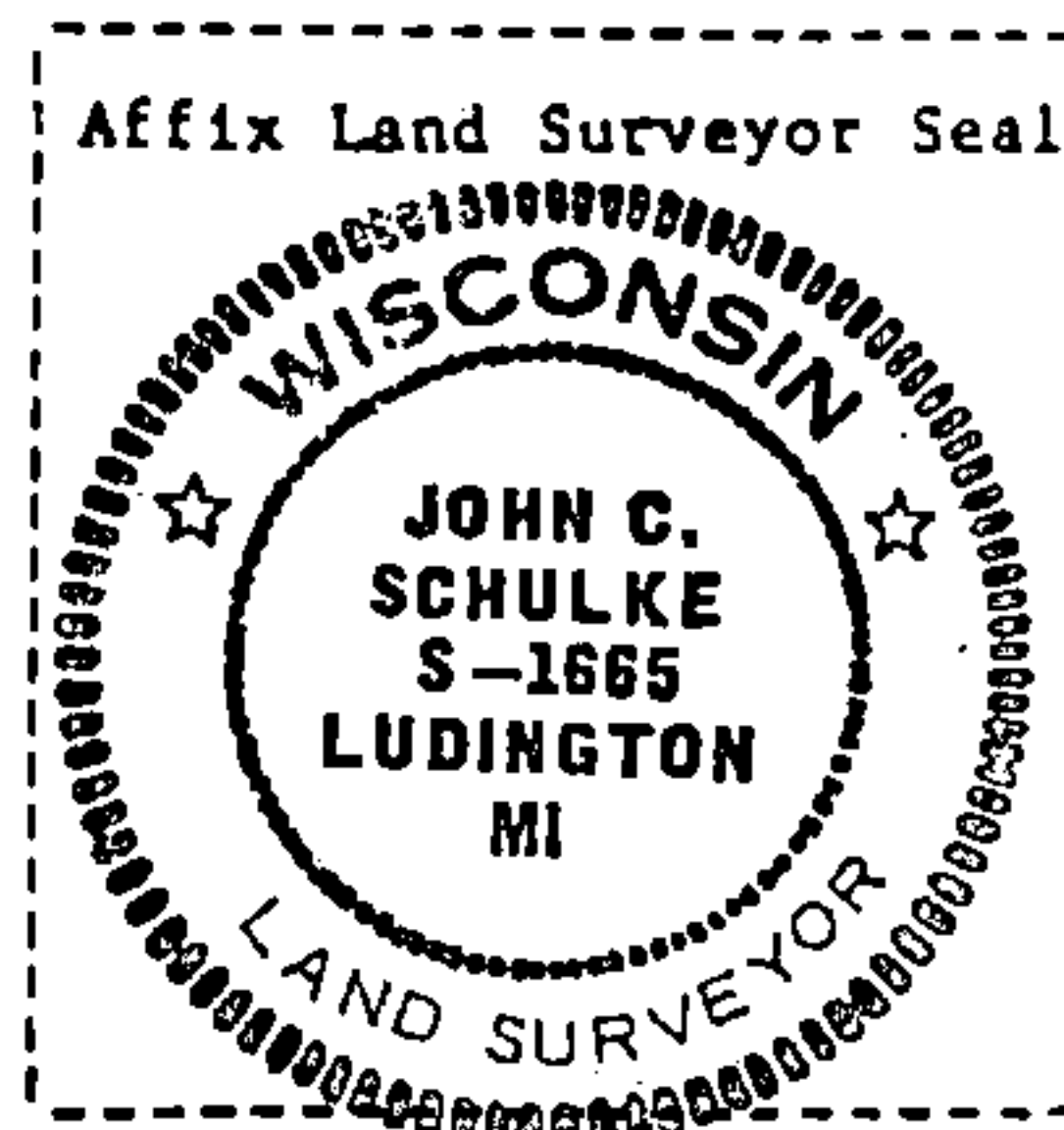
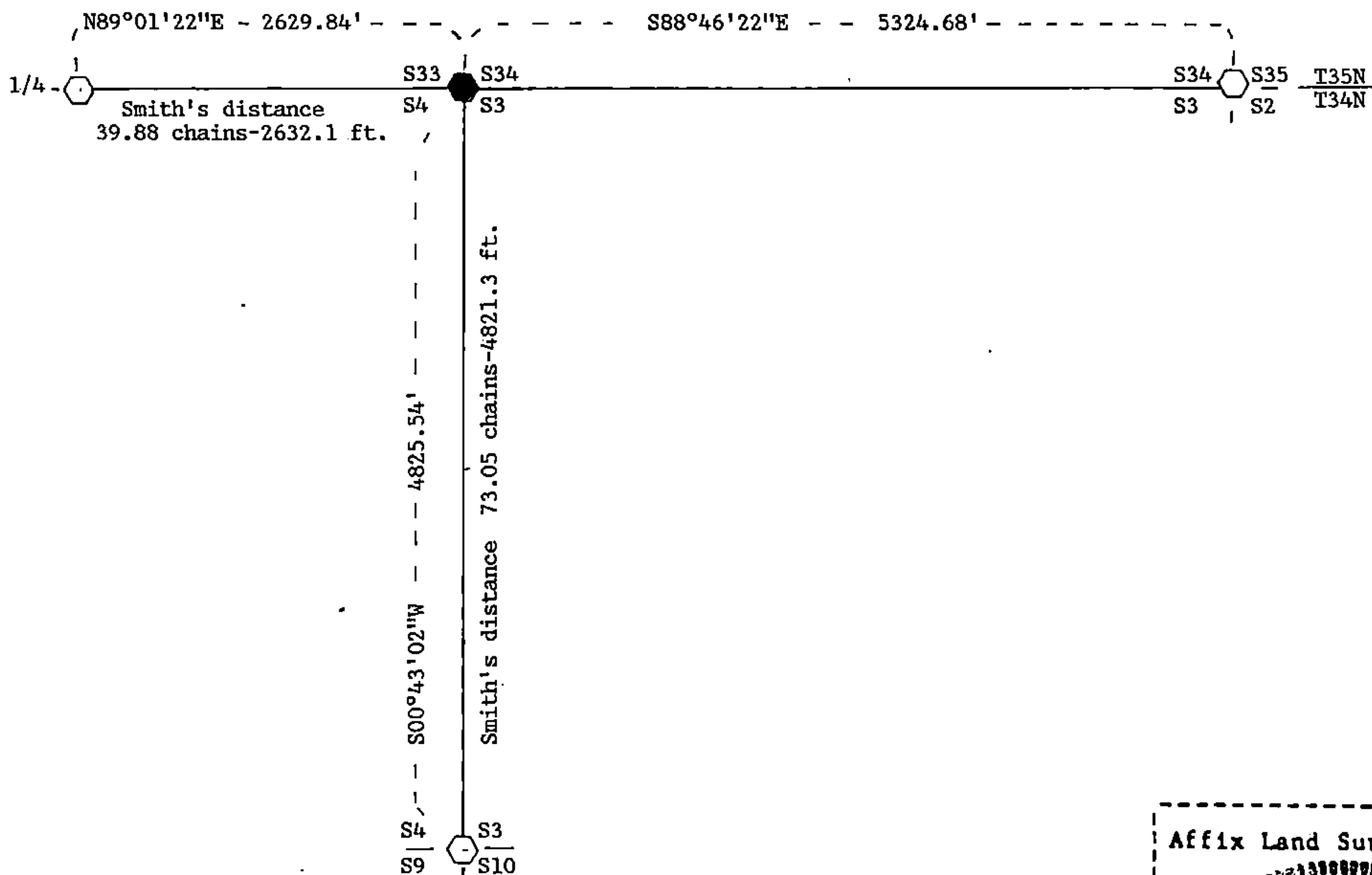
No discrepancy, first corner restoration.

- (f) Was the corner restored through acceptance of (1) an obliterated evidence location, or, (2) a found perpetuated location?

(1) an obliterated evidence location.

Found what appears to be Smith's bearing tree which places the corner close to Smith's distances from the North 1/4 corner and the Southeast corner of Section 4.

- (g&h) Was the corner reestablished through lost corner proportionate methods? If so, show the method, including the directions and distances to other public land survey corners used as evidence or used for proportioning in determining the corner location?



- (1) I, John C. Schulke (type or print name) certify that the corner location shown on this record was determined by me or under my direction and control and that this U.S. Public Land Survey Monument Record is correct and complete to the best of my knowledge and belief.

John C. Schulke Signature Oct 16, 1988 Date
 Certificate ready for filing. Dale O. Stager District Ranger