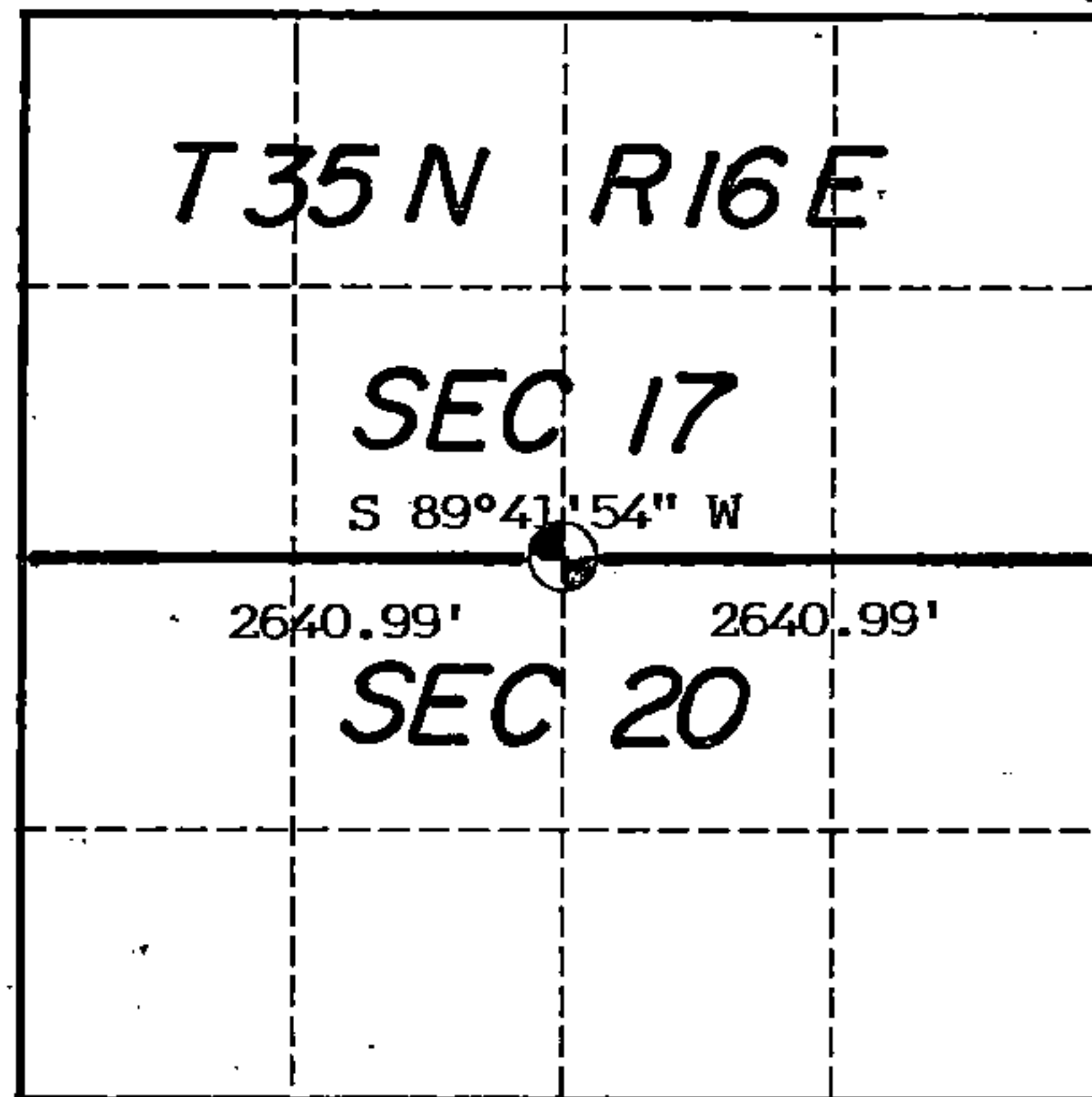


# U. S. PUBLIC LAND SURVEY MONUMENT RECORD

INDEX NO. N-7

Quarter \_\_\_\_\_ Corner to Section 17 20 T 35N, R 16E  
(Section/Quarter) \_\_\_\_\_



Show distances and bearings if set by proportional measurement.

○ = Corner monument restored.



Set a 2" x 36" aluminum post with cap stamped for corner at the corner position. Ties are to aluminum nails driven into the tree centers which trees were blazed and scribed. Bearings are magnetic.

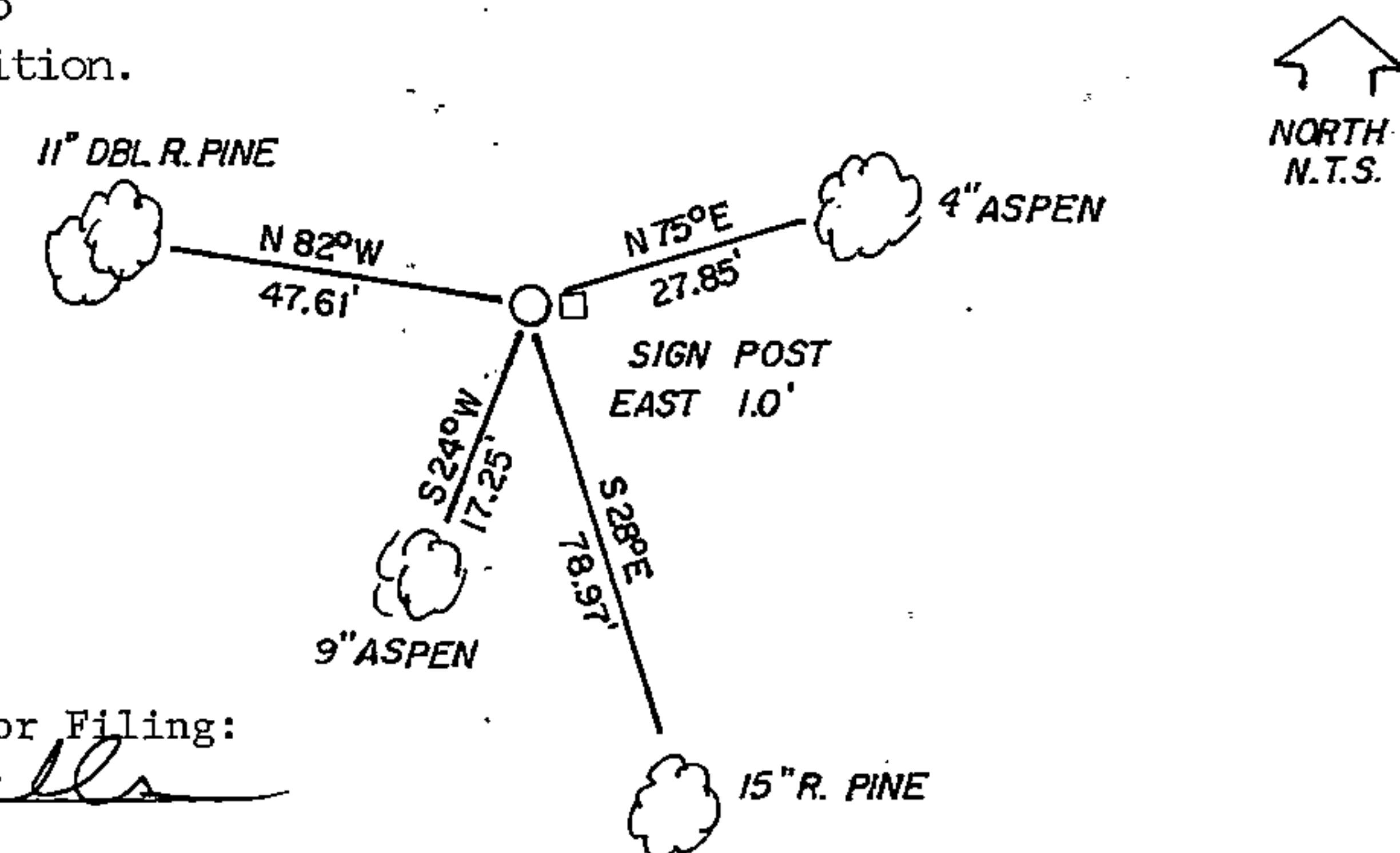
History of original corner establishment, record evidence, monument evidence, occupational evidence, testimonial evidence or any other material evidence, and what you found and how the monument was set.

In 1858 James McBride, contract surveyor, set this corner at 39.98 chains the following bearing trees:

Sugar	10"	S54E	12 links
Elm	9"	N78E	15 links

At the single proportionate position, a search area was set up which fell in a cut over Aspen stand. No evidence of occupation or the corner position was found. The corner was determined to be lost and set by single proportionate measure.

In the plan view drawing below, provide reference ties to at least 4 witness monuments, or, if the location is within a municipality, to at least 2 witness monuments. (Witness monuments shall be made of concrete, natural stone, iron or other equally durable material, except wood other than bearing trees.) Also, show any material discrepancies between the corner restored or re-established and the location of any other previous corner location or occupation.



I, Kim H Pritzlaff, RLS No. 1259  
(Type or print name) certify that the corner location shown on this record was determined by me or under my direction and control and that this U.S. Public Land Survey Monument Record is correct and complete to the best of my knowledge and belief.

*Kim Pritzlaff*  
Signature

1993

Date *10/1/93*

Certificate Ready For Filing:  
*Ralph Bell*  
District Ranger

149063

43516170020

INDEX NO. \_\_\_\_\_

MAINTENANCE RECORD

Condition of Monument \_\_\_\_\_

Condition of Ties \_\_\_\_\_

New Ties, if any:

\_\_\_\_\_  
Date

\_\_\_\_\_  
Signature

Condition of Monument \_\_\_\_\_

Condition of Ties \_\_\_\_\_

New Ties, if any:

\_\_\_\_\_  
Date

\_\_\_\_\_  
Signature

Condition of Monument \_\_\_\_\_

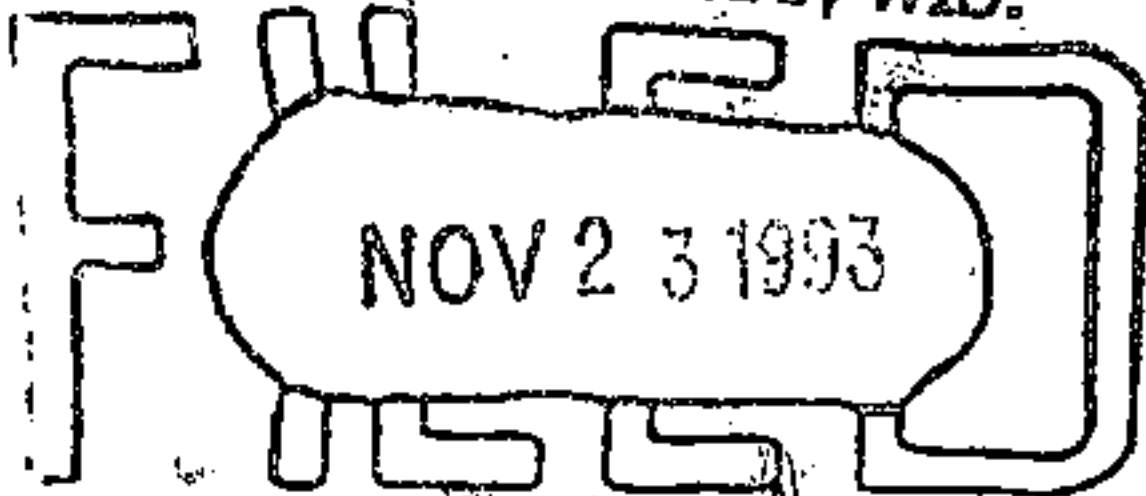
Condition of Ties \_\_\_\_\_

New Ties, if any:

\_\_\_\_\_  
Date

\_\_\_\_\_  
Signature

REGISTER'S OFFICE  
FOREST COUNTY, WIS.



*Paul A. Kuntz* AL 9 O'clock M.

Register of Deeds