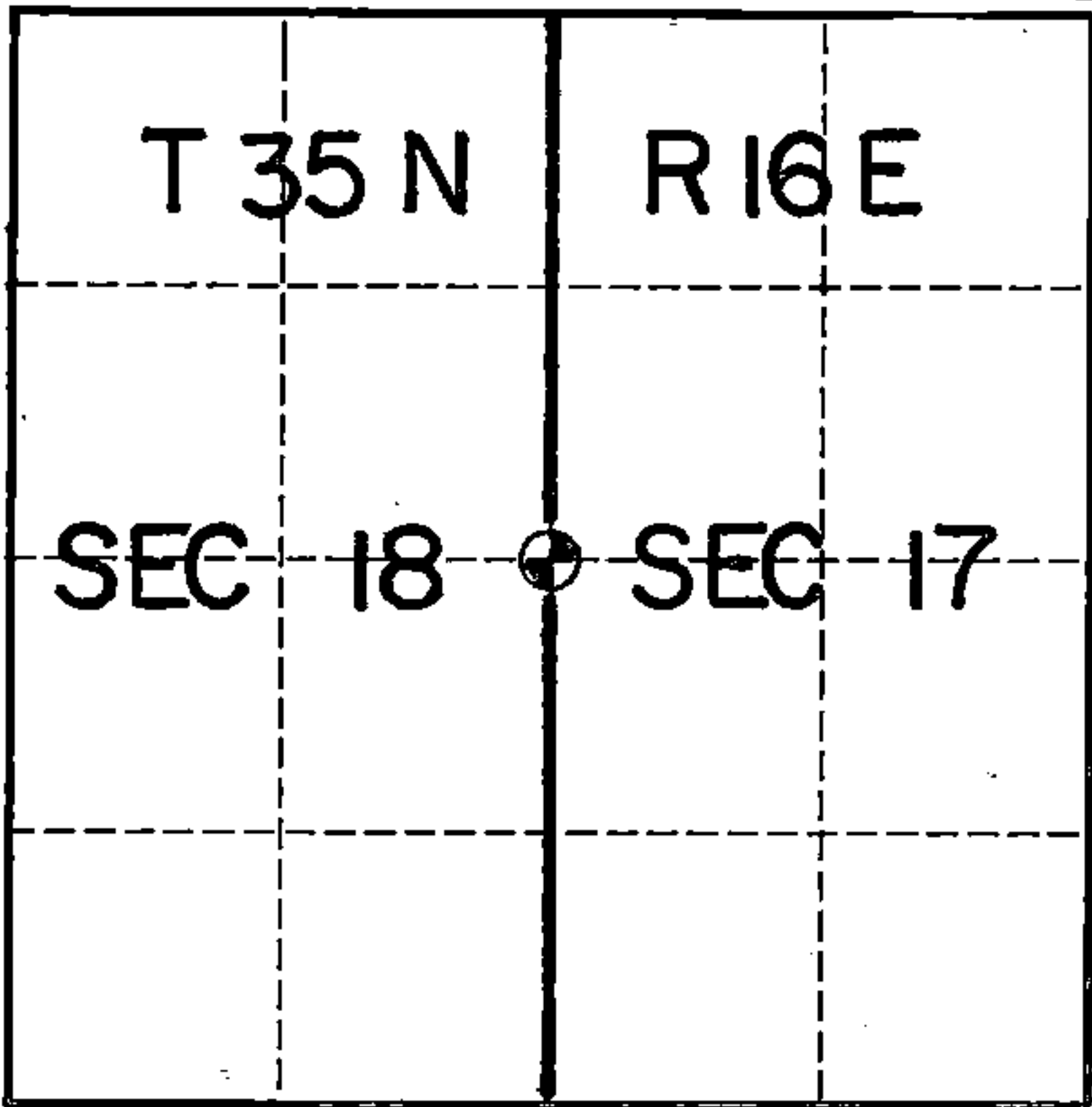


U. S. PUBLIC LAND SURVEY MONUMENT RECORD

INDEX NO. L-5

Quarter _____ Corner to Section 17 18 T 35N, R 16E
(Section/Quarter) _____



History of original corner establishment, record evidence, monument evidence, occupational evidence, testimonial evidence or any other material evidence, and what you found and how the monument was set.

In 1858 James McBride set this corner at 40 chains running north between sections 17 and 18 hitting the lake at 21.61 chains, leaving lake at 35.82 chains and marking the following bearing trees at the quarter corner:

Cedar	14"	N81W	19
Hemlock	24"	N32E	12

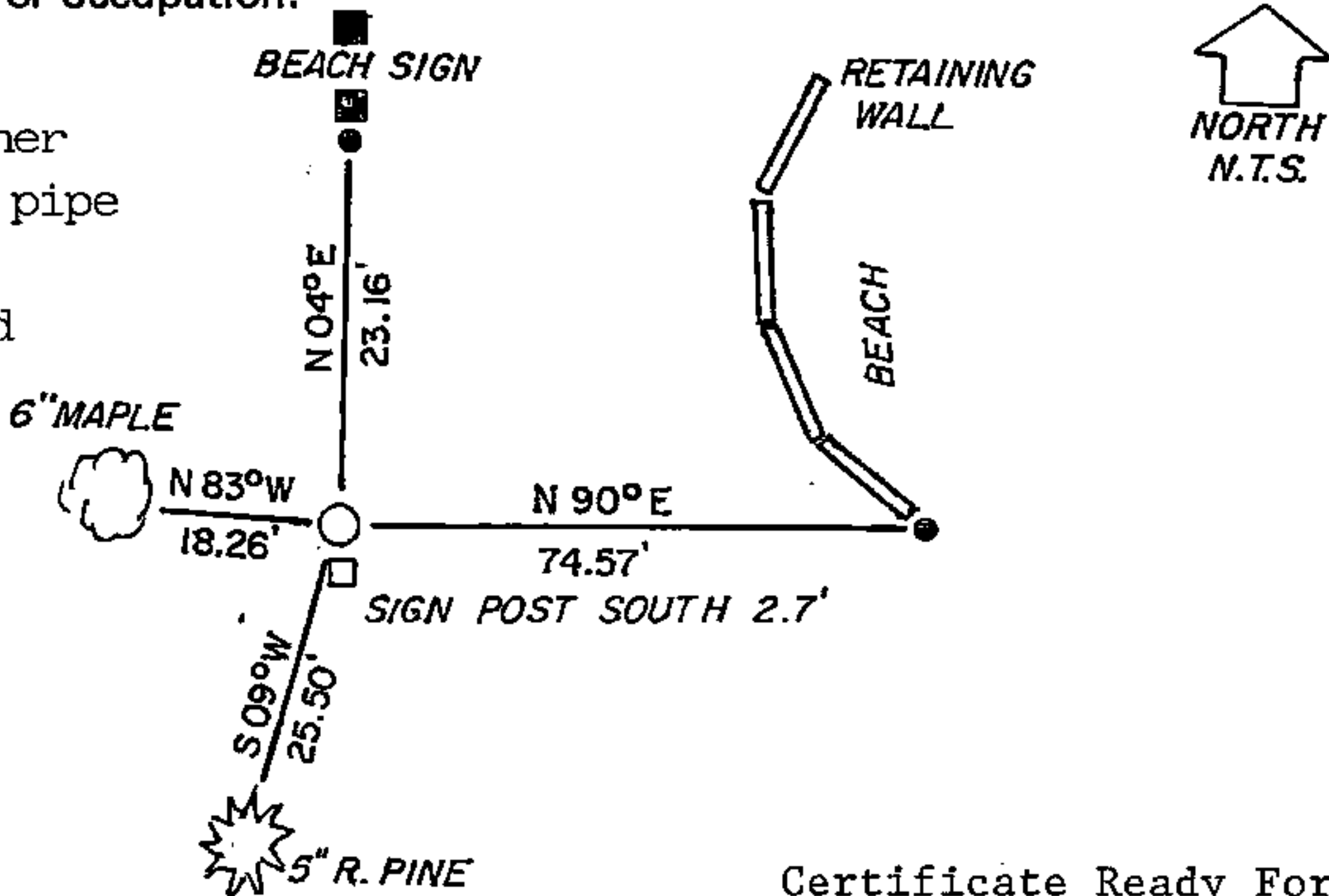
The lake calls to the south all fit within a half chain and a search area was set up at the single proportionate position. This area fell in the recreation beach and corner evidence had been destroyed for beach improvements. I set this corner by lost methods of single proportionate measure which fit the lake calls extremely well.

In the plan view drawing below, provide reference ties to at least 4 witness monuments, or, if the location is within a municipality, to at least 2 witness monuments. (Witness monuments shall be made of concrete, natural stone, iron or other equally durable material, except wood other than bearing trees.) Also, show any material discrepancies between the corner restored or re-established and the location of any other previous corner location or occupation.

○ = Corner monument restored.



Set a 2"x 36" aluminum post stamped for corner flush with ground. Ties are to 1"x 24" iron pipe and aluminum nails driven into the tree centers which trees were scribed and painted brown with minimal signing on the trees. Bearings are magnetic.



I, Kim H Pritzlaff, RLS No. 1259
(Type or print name) certify that the corner location shown on this record was determined by me or under my direction and control and that this U.S. Public Land Survey Monument Record is correct and complete to the best of my knowledge and belief.

Kim Pritzlaff
Signature

1993
Date

Certificate Ready For Filing:
Ralph Bell
Acting District Ranger

149058

43516182000

INDEX NO. _____

MAINTENANCE RECORD

Condition of Monument _____

Condition of Ties _____

New Ties, if any:

Date

Signature

Condition of Monument _____

Condition of Ties _____

New Ties, if any:

Date

Signature

Condition of Monument _____

Condition of Ties _____

New Ties, if any:

Date

Signature

REGISTER'S OFFICE
FOREST COUNTY, WIS.
NOV 23 1993
At 9 O'clock A.M.
Paul A. Schumacher
Register of Deeds