

RECORDER'S OFFICE
Forest County, Wis.
Received for record this 24th day
of July A.D., 2015 at
4:15 o'clock P.M. and recorded
in Vol. Corner restoration
page E-1
Errika L. Deaton, Deputy
Register of Deeds

U.S. PUBLIC LAND SURVEY MONUMENTATION RECORD

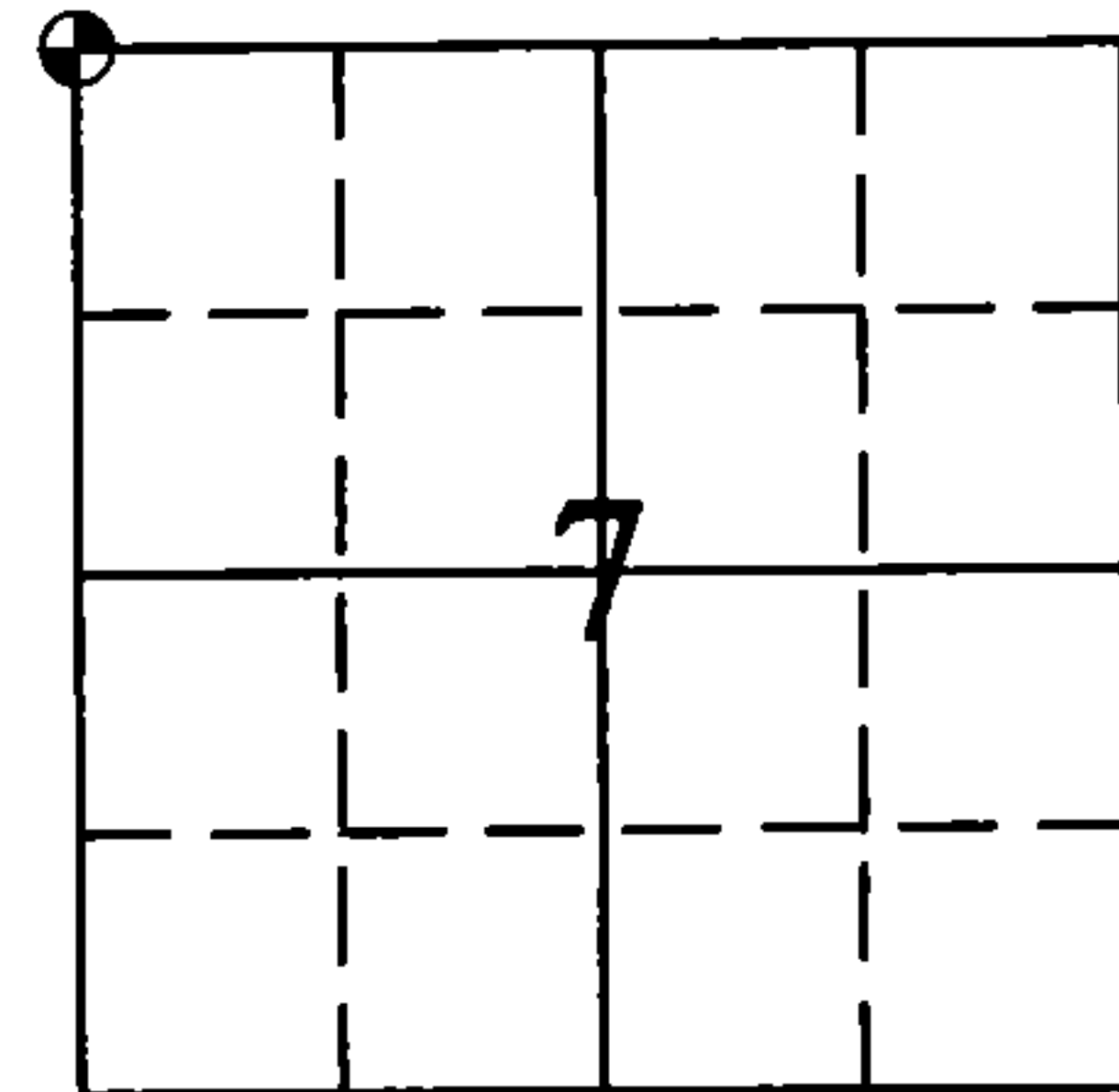
(AS REQUIRED BY S. A-E 7.08, WI ADM. CODE)

CORNER: NORTHWEST INDEX NUMBER: E-1
SECTION: 7 TOWNSHIP: T36N RANGE: R13E
TOWN/CITY/VILLAGE: TOWN OF LINCOLN
COUNTY: FOREST STATE: WISCONSIN

HISTORY OF ORIGINAL CORNER ESTABLISHMENT AND SUBSEQUENT RESTORATIONS
AND DESCRIPTION OF ANY RECORD, MONUMENT, OCCUPATIONAL, TESTIMONIAL, OR
OTHER EVIDENCE CONSIDERED:

1858: ALFRED MILLARD, SET CORNER POST

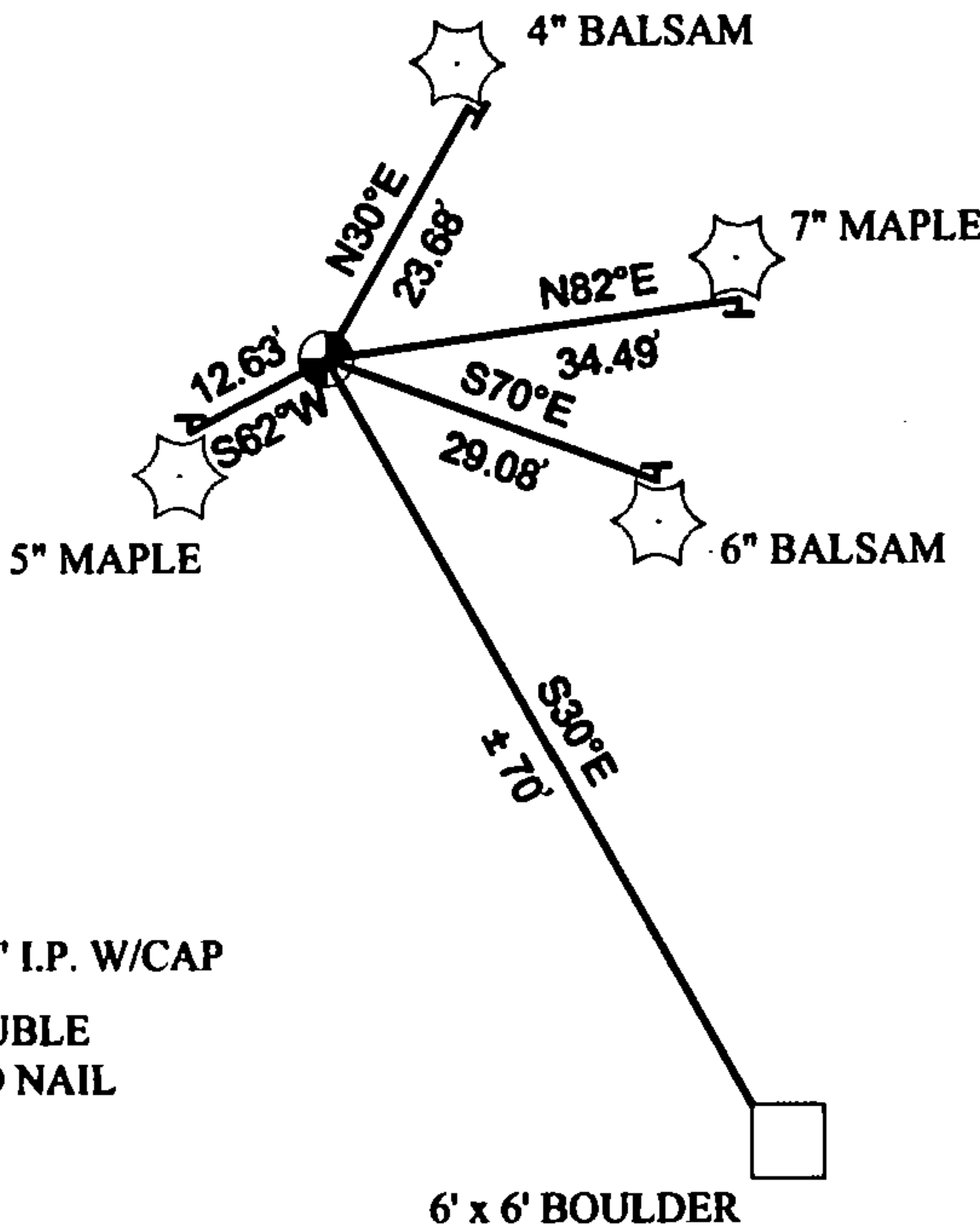
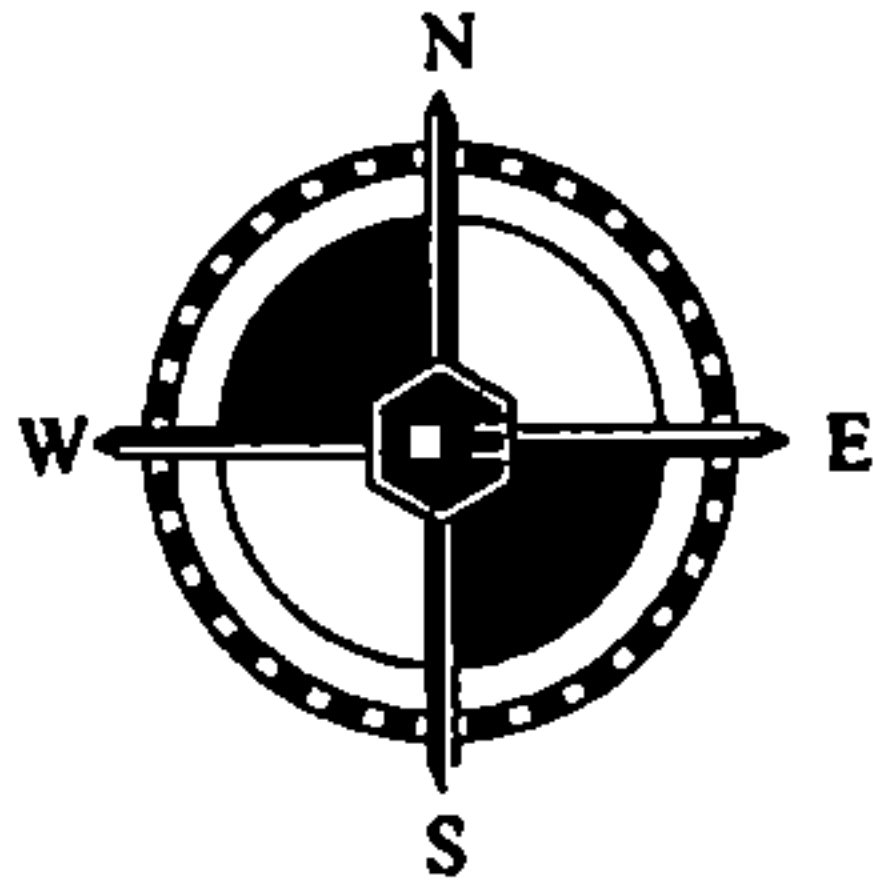
12" ASPEN	N20°E	23 LINKS
10" FIR	N85°W	10 LINKS
10" WHITE BIRCH	S5°W	20 LINKS
10" WHITE BIRCH	S55°E	23 LINKS



⊕ = CORNER LOCATION

CORNER WAS: (CHECK ALL THAT APPLY)

- ☐ RESTORED THROUGH ACCEPTANCE OF AN OBLITERATED LOCATION
- ☐ RESTORED THROUGH ACCEPTANCE OF A FOUND PERPETUATED LOCATION
- ☐ RESTORED OR REESTABLISHED IN A LOCATION THAT DIFFERS FROM A PREVIOUS RESTORATION OR REESTABLISHMENT (INCLUDE A PLAN VIEW DRAWING AND INDICATE WHAT WAS SET AND/OR FOUND)
- ☒ CONSIDERED A LOST CORNER AND REESTABLISHED THROUGH LOST CORNER PROPORTIONATE METHODS (INCLUDE A PLAN VIEW DRAWING SHOWING DISTANCES AND DIRECTIONS TO OTHER PUBLIC LAND SURVEY CORNERS USED FOR PROPORTIONING AND DETERMINING THE CORNER LOCATION)



LEGEND

- ⊕ = SET 1.25" I.P. W/CAP
- ⌞ = SET DOUBLE HEADED NAIL

SCALE: 1" = 30'

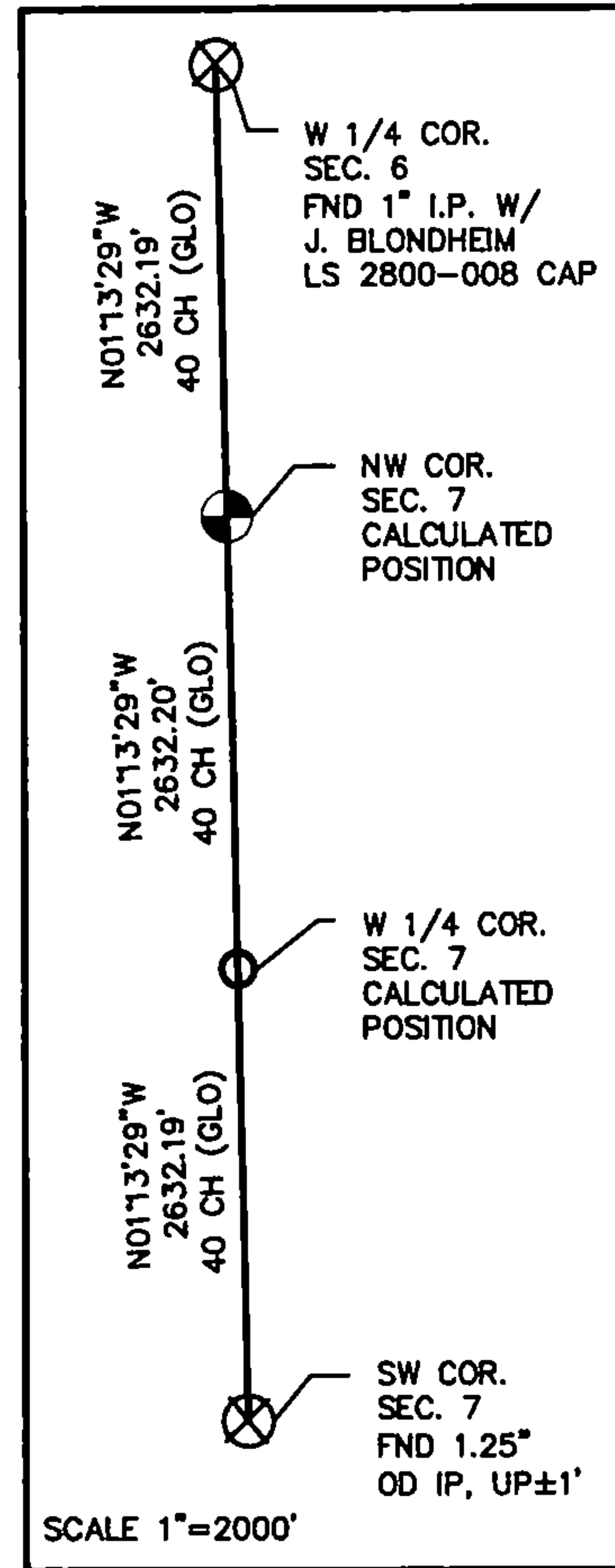
DESCRIBE THE MONUMENT AND ACCESSORIES USED TO PERPETUATE THE LOCATION OF THIS CORNER.
(INCLUDE A PLAN VIEW DRAWING AND INDICATE WHAT WAS SET AND/OR FOUND)

CASEY J. PRIES PLS# S-3065, SET 1.25" x 36" I.P. WITH PLASTIC PRIES PLS-3065 CAP USING SINGLE PROPORTIONATE METHODS. CORNER IS LOCATED 125 FEET NORTH OF SWAMP EDGE.

SET THE FOLLOWING WITNESSES:

4" BALSAM	N30°E	23.68'
7" MAPLE	N82°E	34.49'
6" BALSAM	S70°E	29.08'
6' x 6' BOULDER	S30°E	± 70'
5" MAPLE	S62°W	12.63'

NOTE: ALL WITNESS TREES HAVE CHEST AND STUMP BLAZES WITH DOUBLE HEADED NAIL AT BASE. DISTANCES ARE MEASURED TO DOUBLE HEADED NAIL.

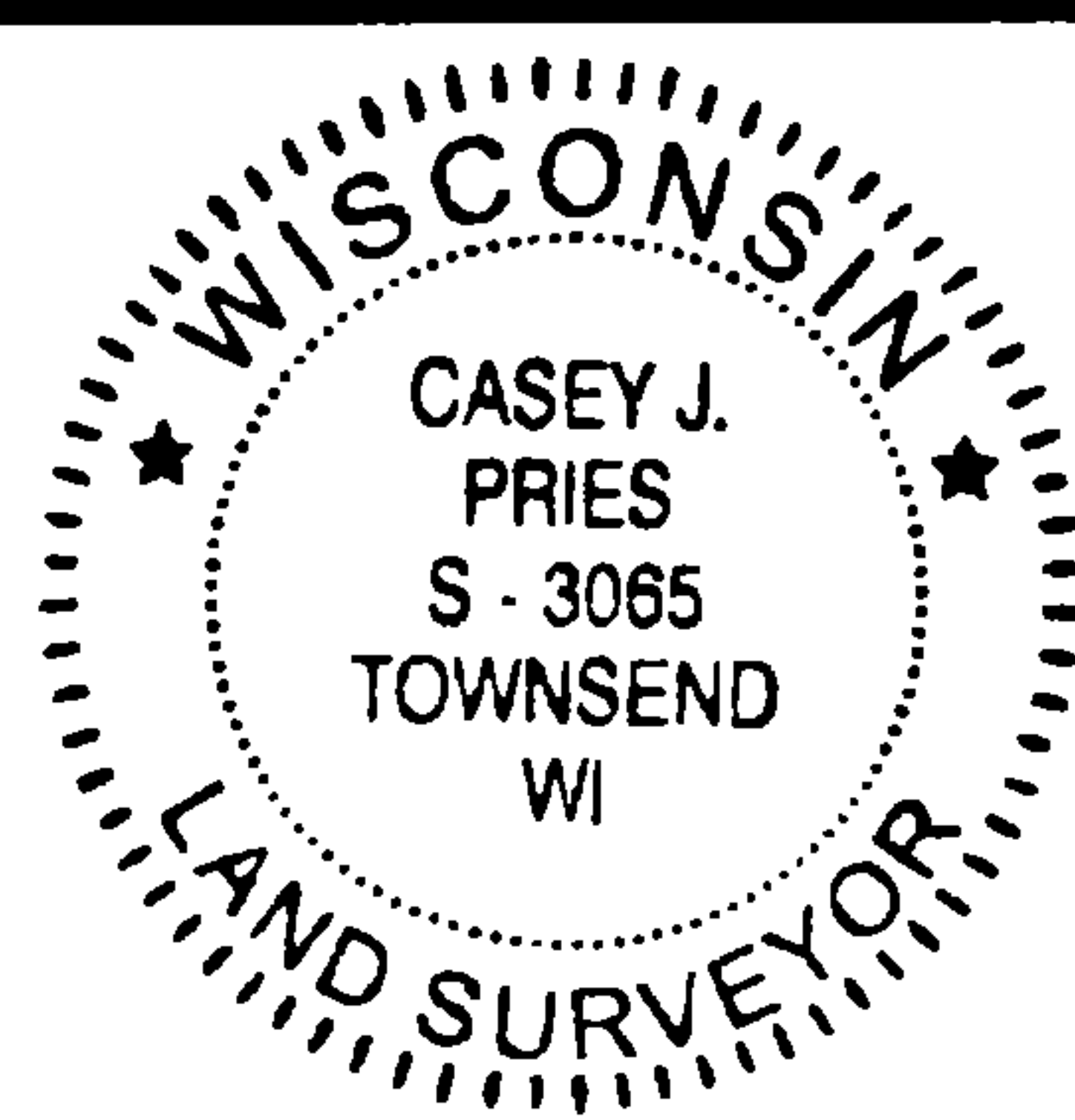


SCALE 1"=2000'

SIGNATURE: Casey Pries

DATE: 7-24-15

Index No. E-1



I, CASEY J. PRIES PLS S-3065

CERTIFY THAT THE CORNER LOCATION SHOWN ON THIS ABOVE RECORD WAS DETERMINED BY ME OR UNDER MY DIRECTION AND CONTROL AND THAT THIS U.S. PUBLIC LAND SURVEY MONUMENT RECORD IS CORRECT AND COMPLETE TO THE BEST OF MY KNOWLEDGE AND BELIEF.



COLEMAN ENGINEERING COMPANY
635 CIRCLE DRIVE, IRON MOUNTAIN, MI 49801
PHONE: (906) 774-3440 FAX: (906) 774-7776

DRAWN:
MJT

FB 430, PG:71

DATE: 7/24/15

JOB NO.
15127-B

43612010000