

REGISTER'S OFFICE
Forest County, Wis.
Received for record this 23 day
of January A.D. 2015 at
9:00 o'clock A.M. and recorded
in Vol. Corner Restoration
page C-25
Erika L. Deaton, Deputy
Register of Deeds

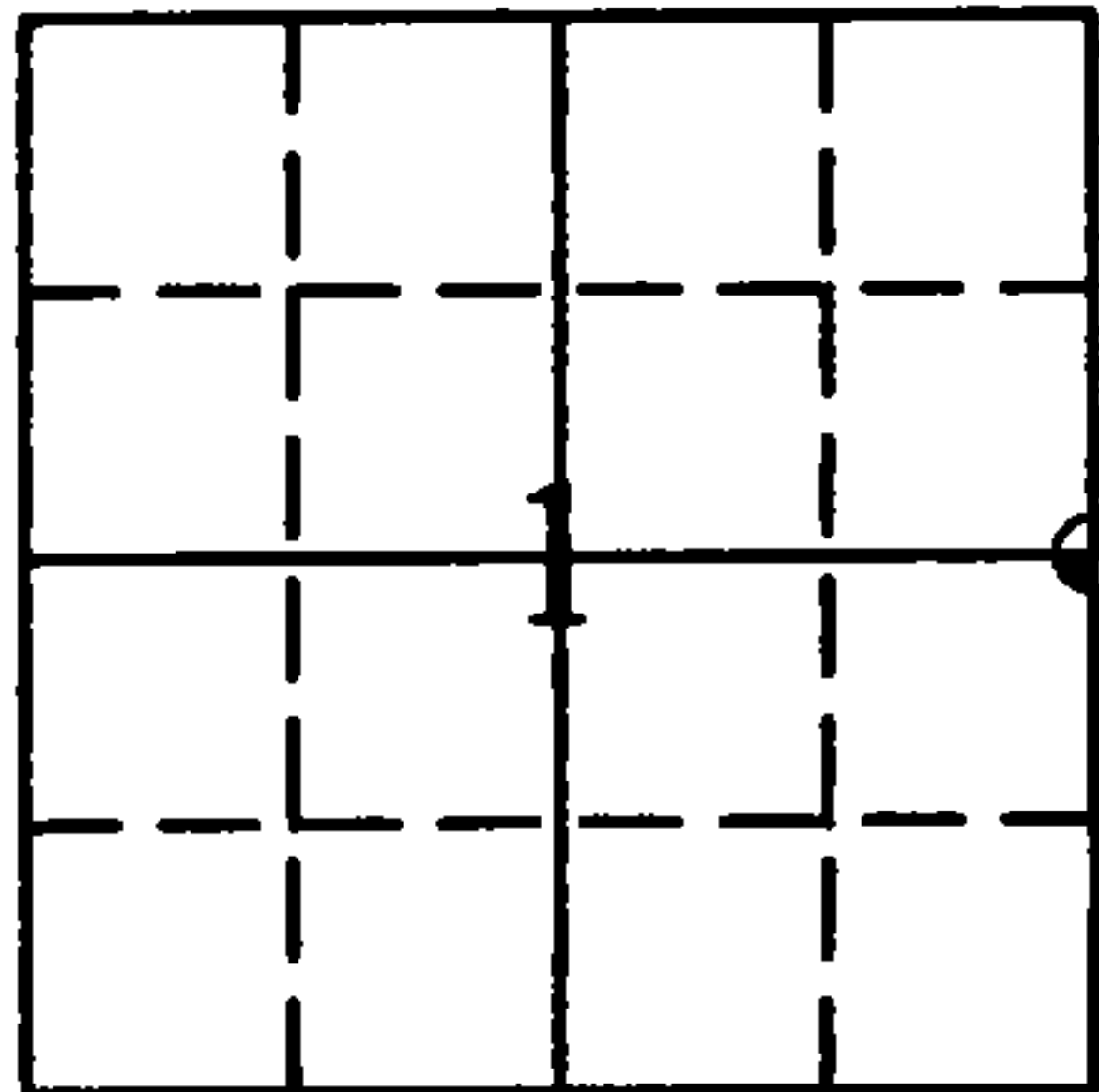
U.S. PUBLIC LAND SURVEY MONUMENTATION RECORD

(AS REQUIRED BY S. A-E 7.08, WI ADM. CODE)

CORNER: EAST 1/4 CORNER INDEX NUMBER: C-25
SECTION: 1 TOWNSHIP: T36N RANGE: R12E
TOWN/CITY/VILLAGE: TOWN OF CRANDON
COUNTY: FOREST STATE: WISCONSIN

HISTORY OF ORIGINAL CORNER ESTABLISHMENT AND SUBSEQUENT RESTORATIONS
AND DESCRIPTION OF ANY RECORD, MONUMENT, OCCUPATIONAL, TESTIMONIAL, OR
OTHER EVIDENCE CONSIDERED:

1858 - A. MILLAND, SET 1/4 SECTION POST;
6" TAMARAC N65°E 12 LINKS
10" TAMARAC S80°W 5 LINKS



⊙ = CORNER LOCATION

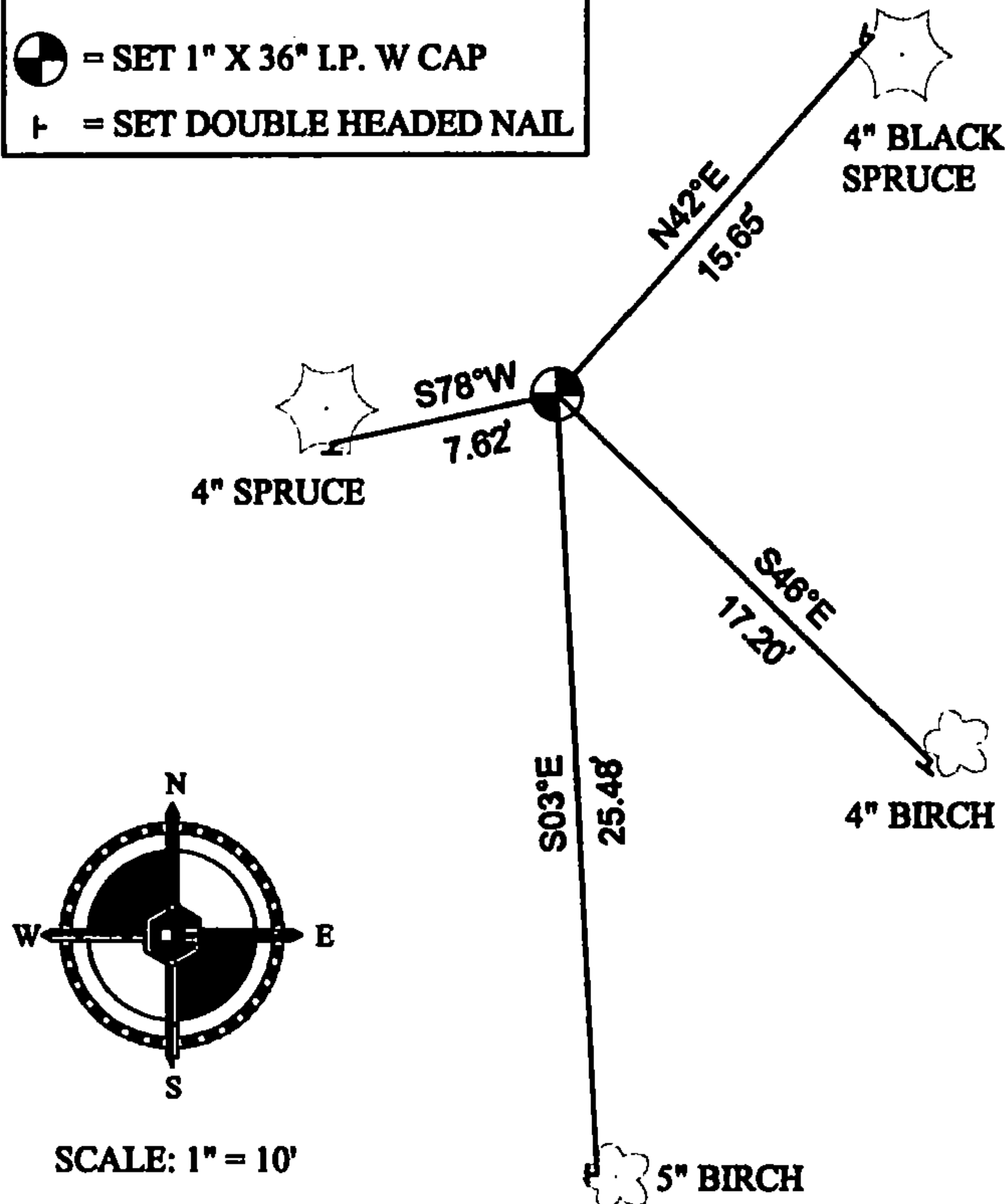
CORNER WAS: (CHECK ALL THAT APPLY)

- ☐ RESTORED THROUGH ACCEPTANCE OF AN OBLITERATED LOCATION
- ☐ RESTORED THROUGH ACCEPTANCE OF A FOUND PERPETUATED LOCATION
- ☐ RESTORED OR REESTABLISHED IN A LOCATION THAT DIFFERS FROM A PREVIOUS RESTORATION OR REESTABLISHMENT (INCLUDE A PLAN VIEW DRAWING AND INDICATE WHAT WAS SET AND/OR FOUND)
- ☒ CONSIDERED A LOST CORNER AND REESTABLISHED THROUGH LOST CORNER PROPORTIONATE METHODS (INCLUDE A PLAN VIEW DRAWING SHOWING DISTANCES AND DIRECTIONS TO OTHER PUBLIC LAND SURVEY CORNERS USED FOR PROPORTIONING AND DETERMINING THE CORNER LOCATION)

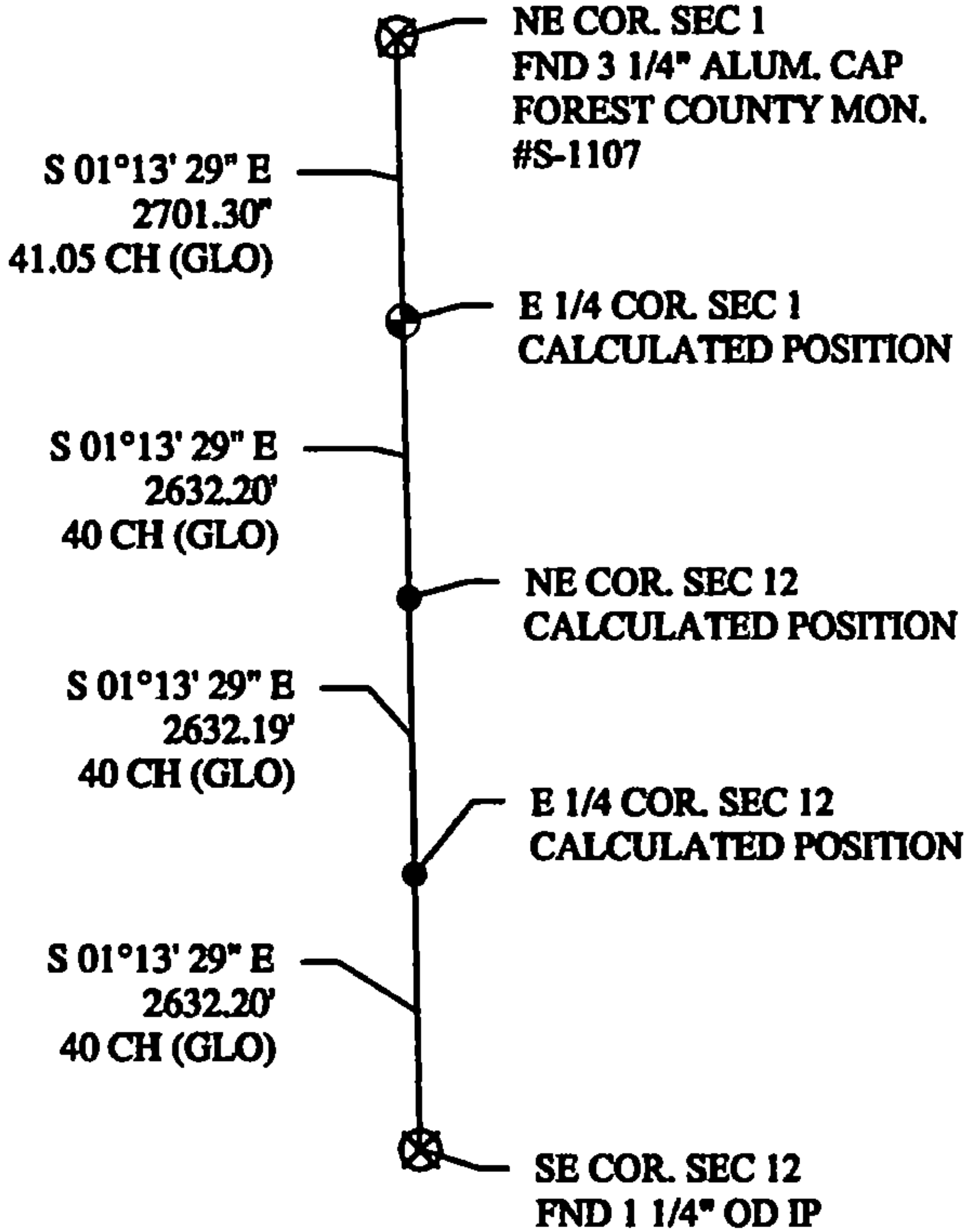
LEGEND

⊙ = SET 1" X 36" I.P. W CAP

† = SET DOUBLE HEADED NAIL



NOT TO SCALE



DESCRIBE THE MONUMENT AND ACCESSORIES USED TO PERPETUATE THE LOCATION OF THIS CORNER.
(INCLUDE A PLAN VIEW DRAWING AND INDICATE WHAT WAS SET AND/OR FOUND)

JAMES BLONDHEIM RLS#2800-008, SET 1"x36" I.P. WITH PLASTIC RLS# 2800 CAP USING SINGLE PROPORTIONATE METHODS.

SET THE FOLLOWING WITNESSES:

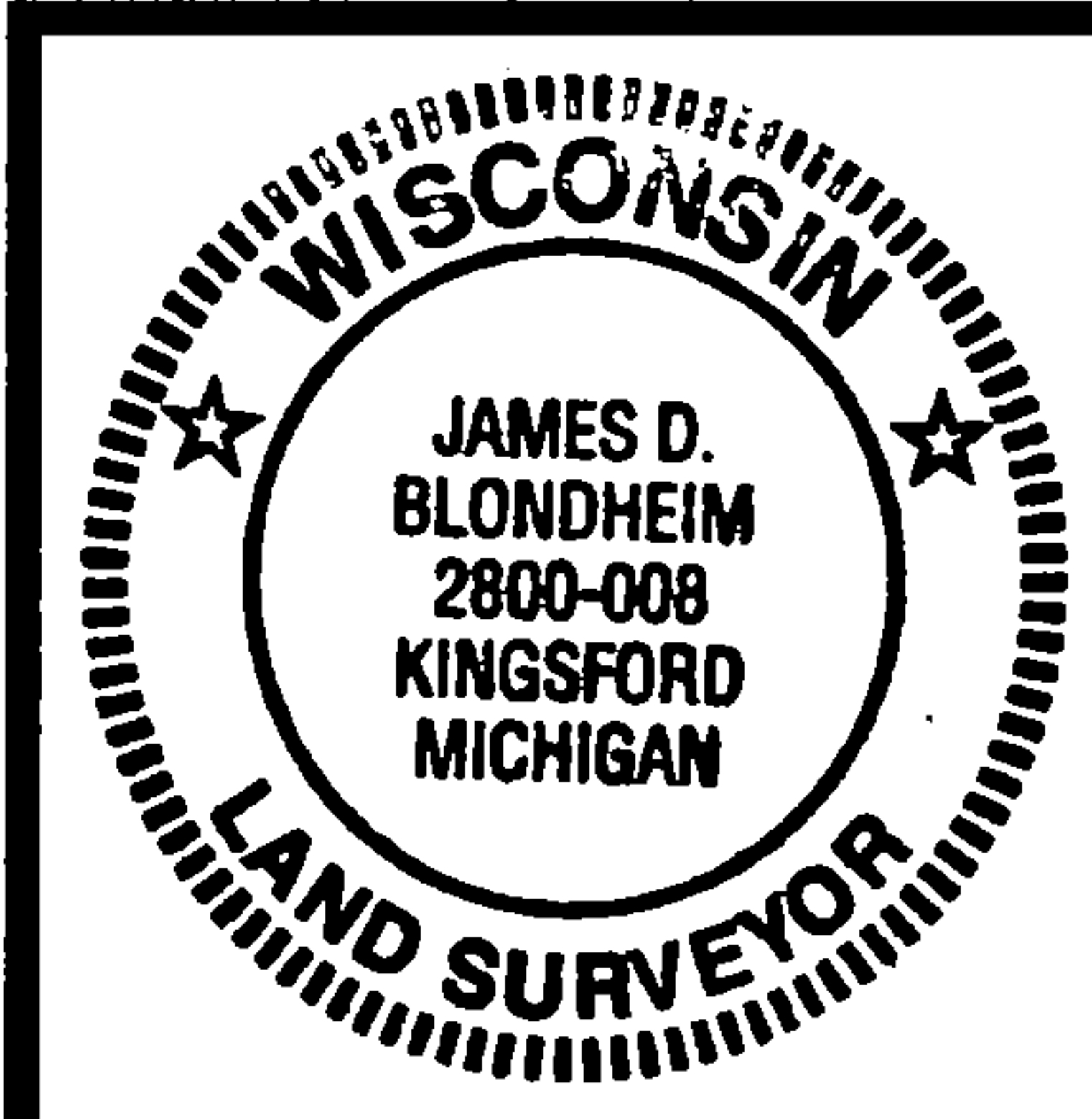
4" BLACK SPRUCE	N42°E	15.65'
4" BIRCH	S46°E	17.20'
5" BIRCH	S03°E	25.48'
4" SPRUCE	S78°W	7.62'

NOTE: ALL WITNESS TREES HAVE CHEST AND STUMP BLAZES PAINTED BLUE WITH DOUBLE HEADED NAIL AT BASE. DISTANCES ARE MEASURED TO DOUBLE HEADED NAIL.

SIGNATURE: [Signature]

DATE: 1/19/2015

Index No. C-25



I, JAMES D. BLONDHEIM RLS S-2800-008
CERTIFY THAT THE CORNER LOCATION SHOWN ON THIS ABOVE RECORD
WAS DETERMINED BY ME OR UNDER MY DIRECTION AND CONTROL AND
THAT THIS U.S. PUBLIC LAND SURVEY MONUMENTATION RECORD IS CORRECT
AND COMPLETE TO THE BEST OF MY KNOWLEDGE AND BELIEF.



COLEMAN ENGINEERING COMPANY
635 CIRCLE DRIVE, IRON MOUNTAIN, MI 49801
PHONE: (906) 774-3440 FAX: (906) 774-7776

DRAWN:
MJT

FB 441, PG:48

DATE: 1/8/2015

JOB NO.
14426-A