

U.S. PUBLIC LAND SURVEY MONUMENT RECORD

Instructions: This record shall show the location of the corner and shall include all of the following nine elements (a through i).

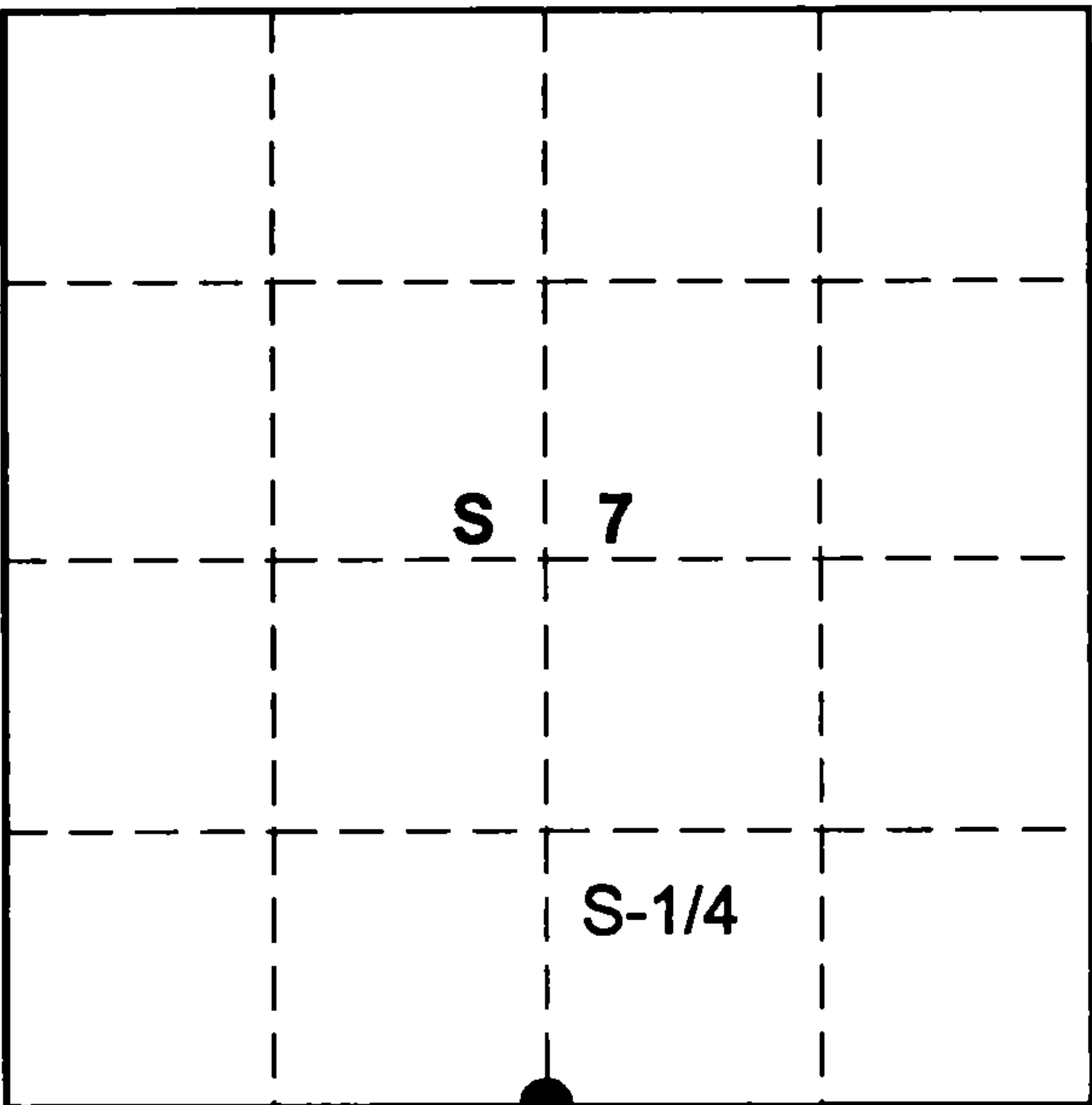
(a) Identify the corner by reference to the U.S. public land survey system.

○ = Corner monument restored.

S-1/4 Corner
Sec. 7, T 36 N, R 12 E

Type of Monument:

2-1/4" Aluminum Pipe 3-1/4" Alloy Cap
12" above ground



FOREST COUNTY

(b) Describe any record evidence, monument evidence, occupational evidence, testimonial evidence or any other material evidence you considered, and whether the monument was found or placed.

Recovered a 6"x6" wood post no scribe marks visible, also a 6" Black Spruce with scribing partly visible on lower blaze bears N63E 8.57'

Wallace Yocum a life time adjacent land owner of 80 years stated to me in the early 1950s John Hammes a land surveyor reestablished the quarter corner by retracement of J.R. Ritters survey of 1938.

Replaced post with a 2-1/4" aluminum Forest County monument.

(c) In the plan view drawing below, provide reference ties to at least 4 witness monuments, or, if the location is within a municipality, to at least 2 witness monuments. (Witness monuments shall be made of concrete, natural stone, iron or other equally durable material).

Describe witness monuments:

(d) Show a plan view drawing depicting the relevant monuments and reference ties which is sufficient in detail to enable

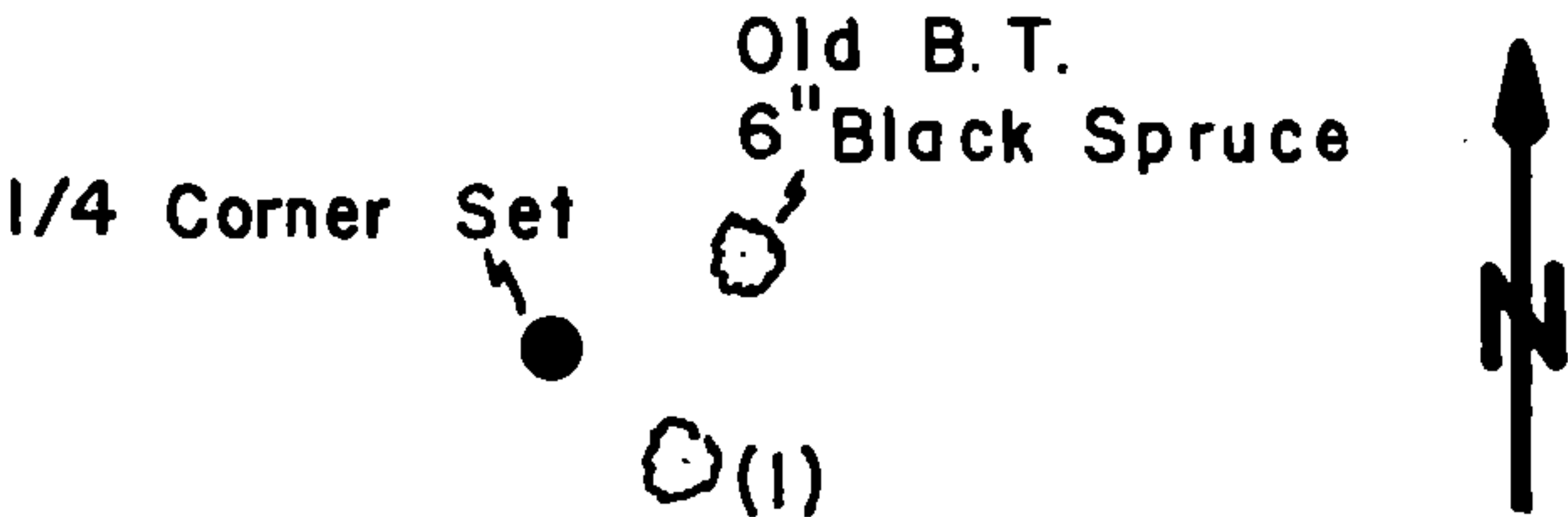
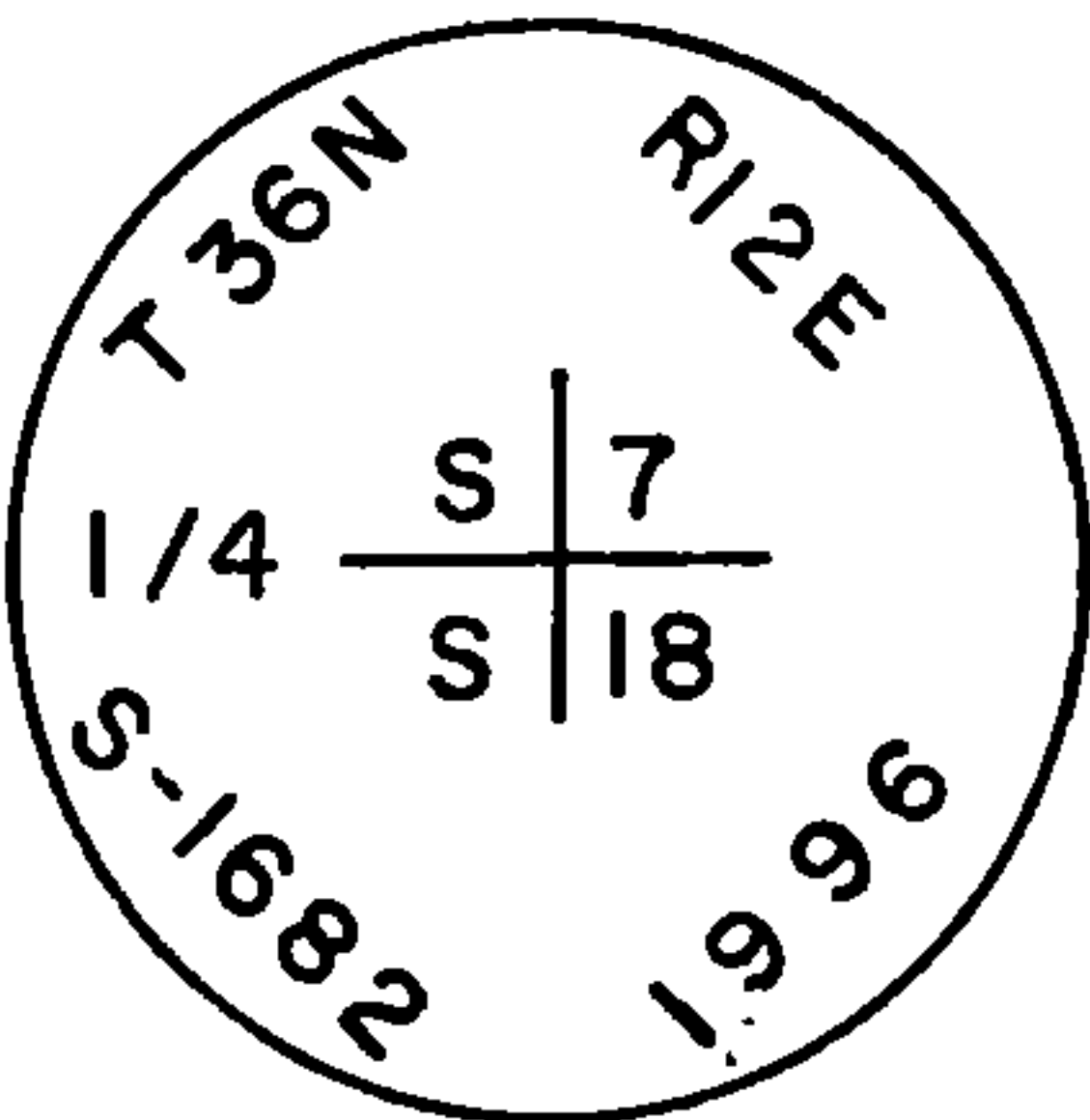
accurate relocation of the corner monument if the corner monument is disturbed. Indicate north.

Marked New Bearing Trees

- (1) 5" Tamarack S53E 6.88'
- (2) 5" Tamarack S32W 31.94'
- (3) 5" Tamarack N05W 23.29'

(3) ○

Monument Set
6" above ground



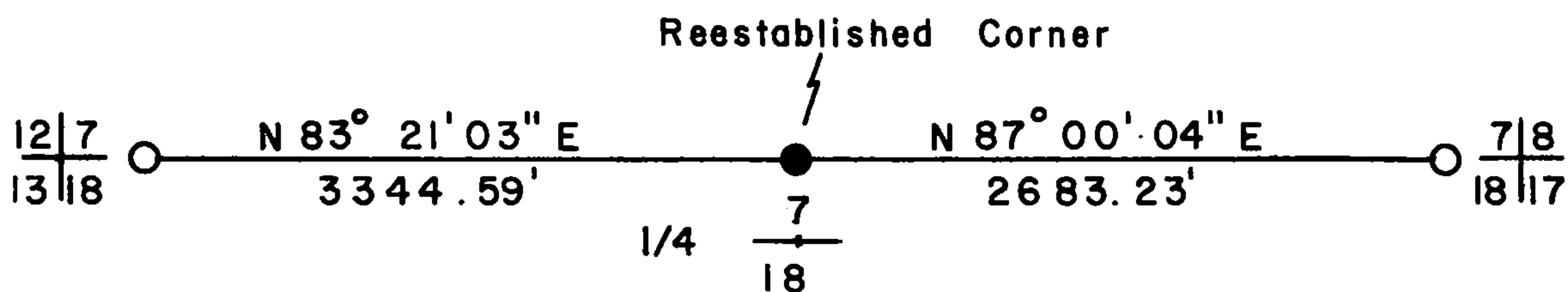
○ (2)

- (e) Describe any discrepancy between the location of the corner as restored or reestablished and the location of that corner as previously restored or reestablished by distance and direction. Show the discrepancy on the plan view drawing under (d), above. Show the distances between the corner as previously restored or reestablished and (1) the corner as restored or reestablished, and (2) to at least 2 of the witness monuments shown on the drawing in (d), above.

- (f) Was the corner restored through acceptance of (1) an obliterated evidence location, or, (2) a found perpetuated location?

Perpetuated location

- (g&h) Was the corner reestablished through lost corners proportionate methods? If so, show the method, including the directions and distances to other public land survey corners used as evidence or used for proportioning in determining the corner location?



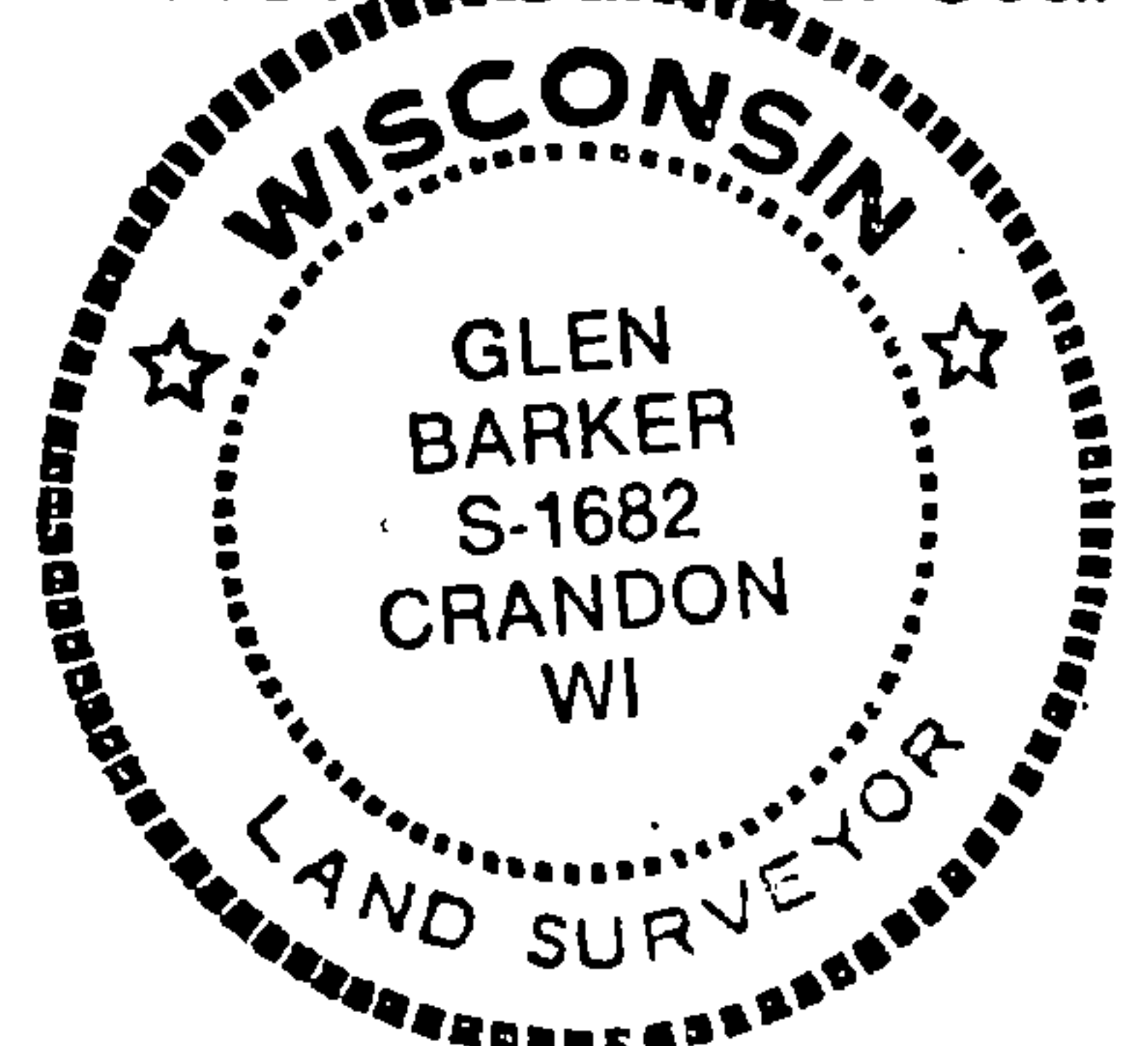
REGISTER'S OFFICE
Forest County, WI

Received for record this 3rd day
of March A.D. 1998
at 1:14 o'clock P.M. and
recorded in Vol. 36-12 of records
on page 1-3

[Signature]
Deputy REGISTER

- (i) I, Glen Barker
(type or print name) certify that the corner location shown on this record was determined by me or under my direction and control and that this U.S. Public Land Survey Monument is correct and complete to the best of my knowledge and belief.

Affix Land Surveyor Seal



Signature

[Signature of Glen Barker]

Date

03/02/98

SEC. ---7---TWN.---36---RNG.-12E---