

Document Number

176962

REGISTER'S OFFICE  
Forest County, Wis.  
Received for record this 9 day  
of October A.D., 2002 at  
9:00 o'clock A.M. and recorded  
in Vol. Corner Restoration  
page 19

Kay Swanson, Deputy  
Register of Deeds

# U.S. PUBLIC LAND SURVEY MONUMENT RECORD

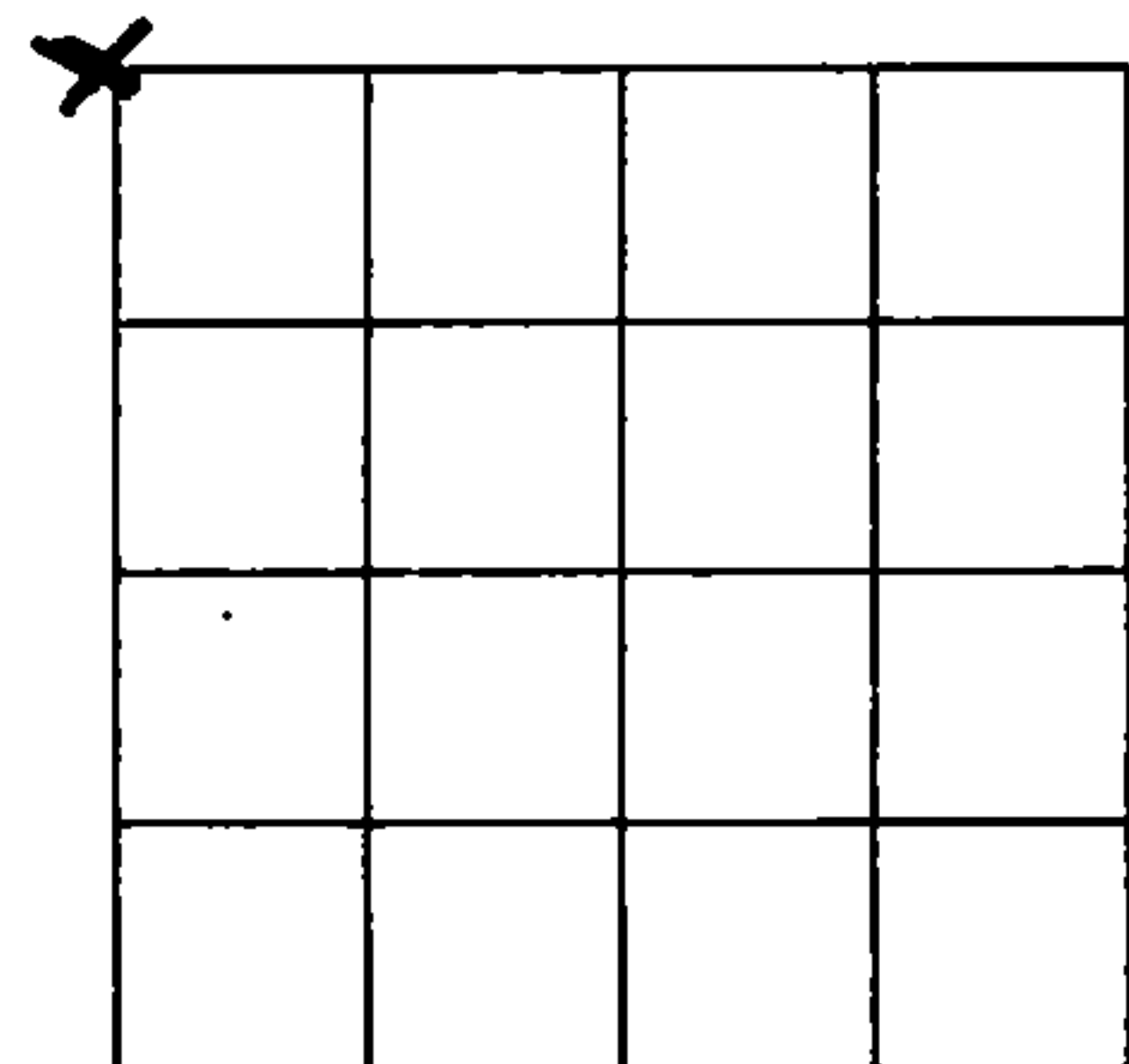
NOTE: This form is intended and designed to fulfill all requirements of Wisconsin Administrative Code, Chapter A-E 7.08 U.S. Public Land Survey Monument Record (3)(a)(b)(c)(d)(e)(f)(g)(h)(i). An additional sheet may be added if necessary to conform with said requirements.

(a) Corner location: Township 36 North

Range 12 East

Town of CRANDON

County, Wisconsin

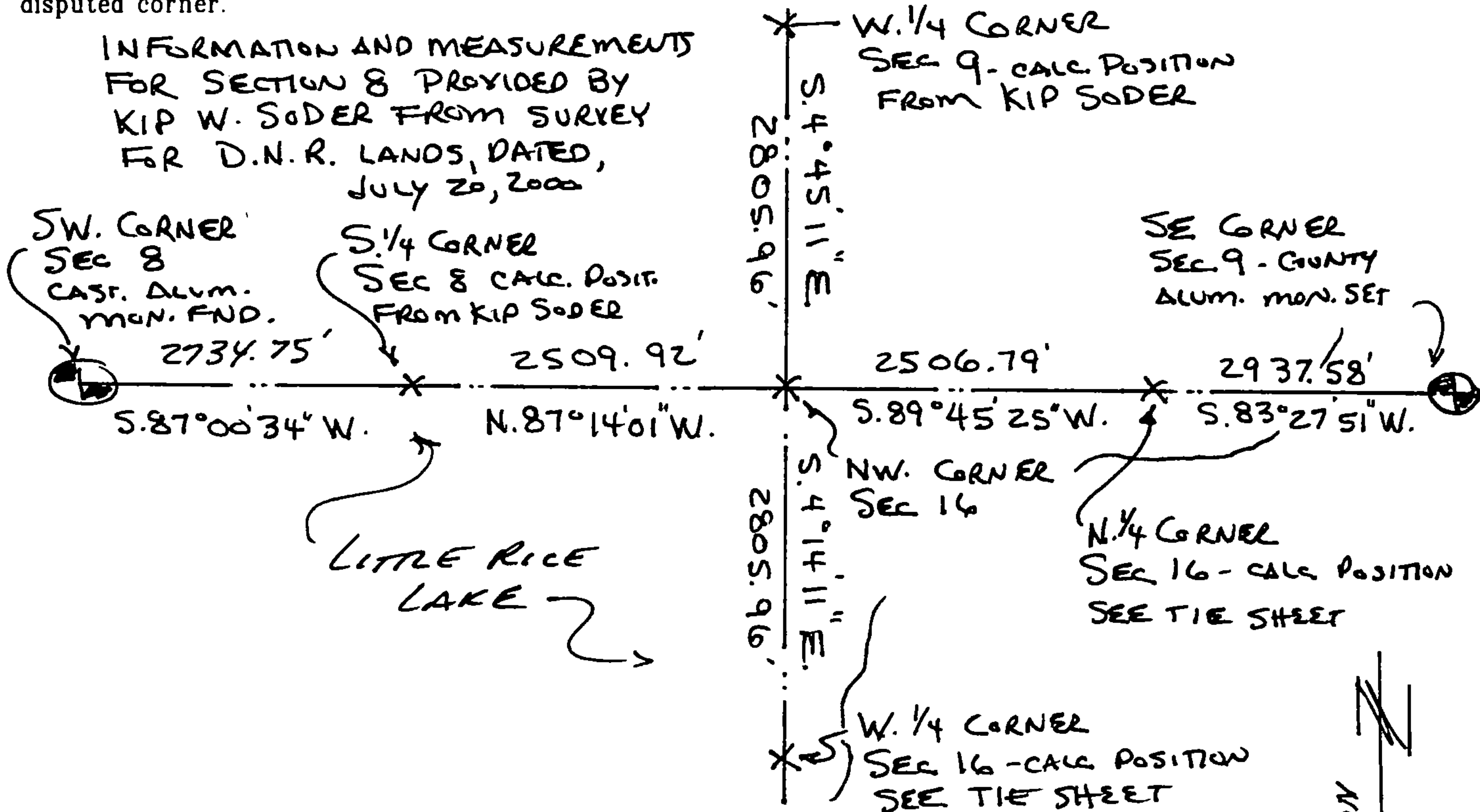


Section 16

(b)(f)(g)(h) Description of monument found at this corner and if it was accepted, state all evidence (material, testimonial, occupational, plats, records, other monuments) used as a basis for accepting. If not accepted or if nothing was found, state evidence used as basis for establishing location. If reestablished through lost corner proportionate methods, indicate all monuments, distances and directions used to establish. Indicate type of monument found or set and sign post.

Researched records, Original corner established by Wm. E. Daugherty in August, 1859. Around 1937 a dam was built on the South end of Little Rice Lake. At this time the area around this corner is under water. I could find no other information on this corner. I determined this to be a lost corner and reestablished by double proportionate method based on the Manual of Surveying Instructions for lost corners. See plat of survey by MSA Professional Services, dated 6/28/02, for additional measurements.

(c)(d)(e) Plan view of corner with ties to at least 4 witness monuments. If in disagreement with previously established corner, show the distances between the two corners and also indicate the ties to the disputed corner.



(i) I, Eugene C. Uttech, Registered Land Surveyor \*S-1451, hereby certify that the corner location on this record was determined by me or under my direction and control and that this U.S. Public Land Survey Monument Record is correct and complete to the best of my knowledge and belief.

Eugene C. Uttech  
Signature

September 27, 2002  
Date



Index No. 59

43612080000