

Document Number
199359

REGISTER'S OFFICE
Forest County, WI

Received for record this 31ST day
of December AD. 2008
at 10:10 o'clock A M. and
recorded in Vol. Corner Restoration of records
on page L-21.

Kay Swanson
Deputy REGISTER

U.S. PUBLIC LAND SURVEY MONUMENT RECORD

(As Required by WI Adm. Code)

History of original corner establishment and subsequent restorations and descriptions of any record, monument, occupational, testimonial or other evidence considered:

1859 - William E. Daugherty, set quarter corner section post and made the following B.T.'s:

Hemlock, 8", N 81° W, 10 lks., 6.60 feet.
Hemlock, 10", S 71° E, 14 lks., 9.24 feet.

1919 - I.R. Ritter set an iron pipe at quarter corner position and made the following B.T.'s:

Tamarack, 10", S 44° W, 4.5 lks., 2.97 feet.
Cedar, 8", S 04° W, 17.5 lks., 11.55 feet.

2008 - I found no evidence of the quarter corner or it's accessories.

I set corner at proportionate distance and on line between the Northwest Corner and the Southwest corner of Section 13. Corner falls 12 feet North of Centerline of Town road.

I set a 2" X 30" Forest County Aluminum Pipe Monument from which the following bear:

1" X 32" Iron Pipe, N 04° E, 21.35 feet.
Black Spruce, 14", N 40° E, 23.49 feet.
Cedar, 9", S 29° E, 61.05 feet.
Hemlock, 12", S 40° W, 66.89 feet.

Corner was: (Check All That Apply)

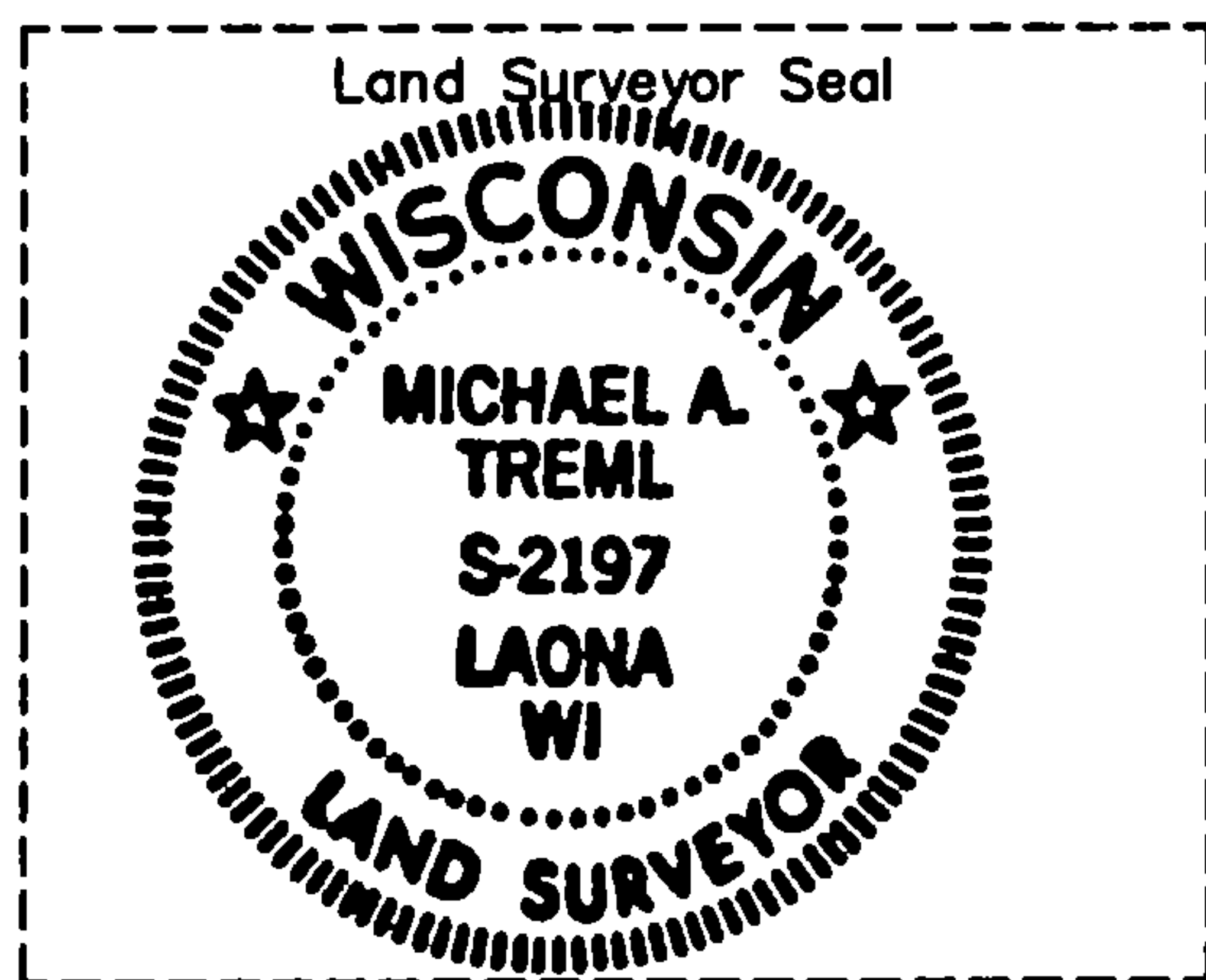
- ☐ Restored through acceptance of an obliterated evidence location.
☐ Restored through acceptance of a found perpetuated location.
☒ Considered a lost corner and reestablished through lost corner proportionate methods (include a plan view drawing showing distances and directions to other Public Land Survey Corners used for proportioning and determining the corner location).
☐ Restored or reestablished in a location that differs from a previous restoration or reestablishment (include a plan view drawing and indicate what was set and/or found).

Describe the monument and accessories used to perpetuate the location of this corner (include a plan view drawing and indicate what was set and/or found).

LEGEND:

- Set 2" X 30" Forest County Aluminum Pipe Monument
● Found 1 1/4" Iron Pipe
○ Set 1" X 32" Iron Pipe
() Recorded As

Note: Distances are taken to nail in side of tree & center of 1" iron pipe.



NW Cor.
Sec. 13

(5245.68')
5232.57'

2612.33'
(2618.88')

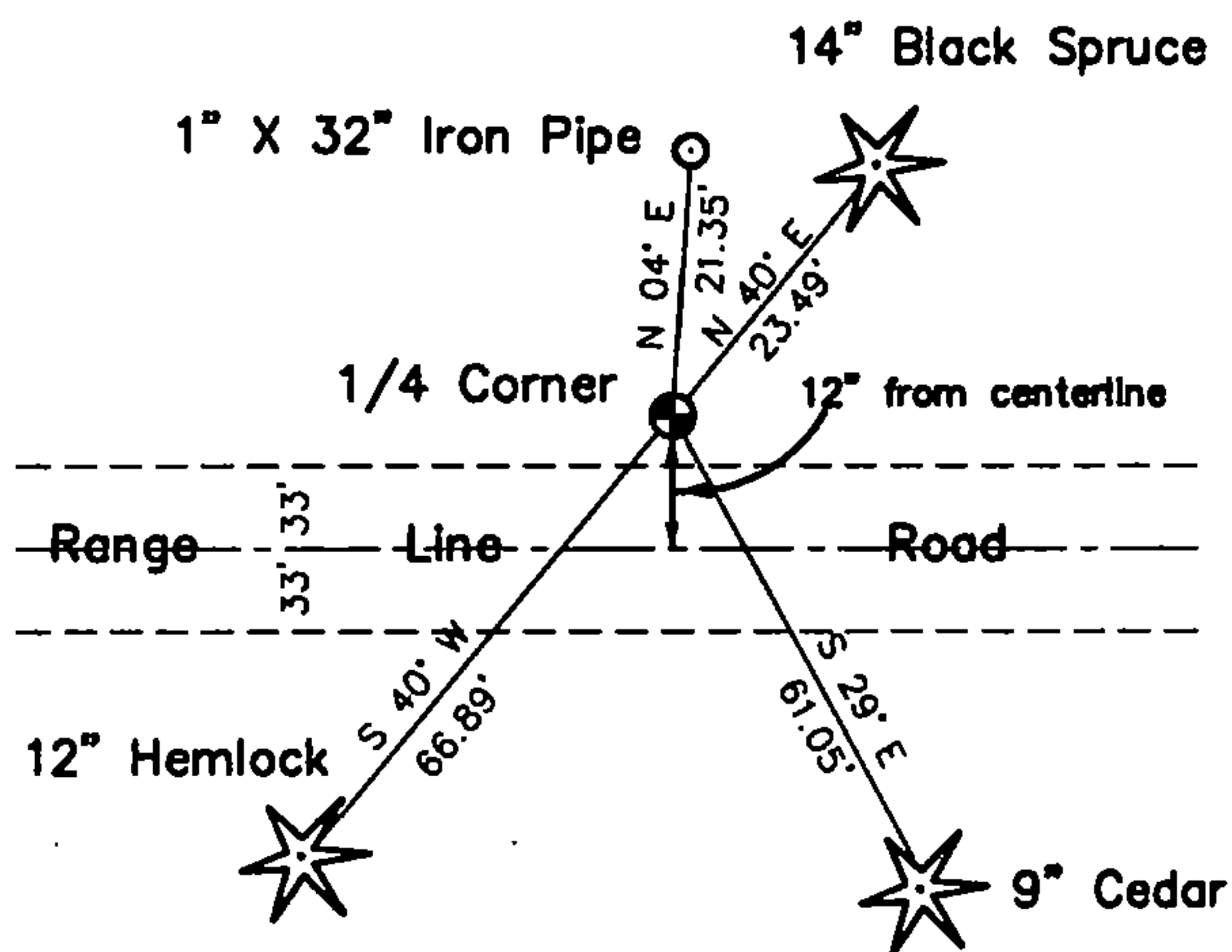
W 1/4
Sec. 13

2620.24'
(2626.80')

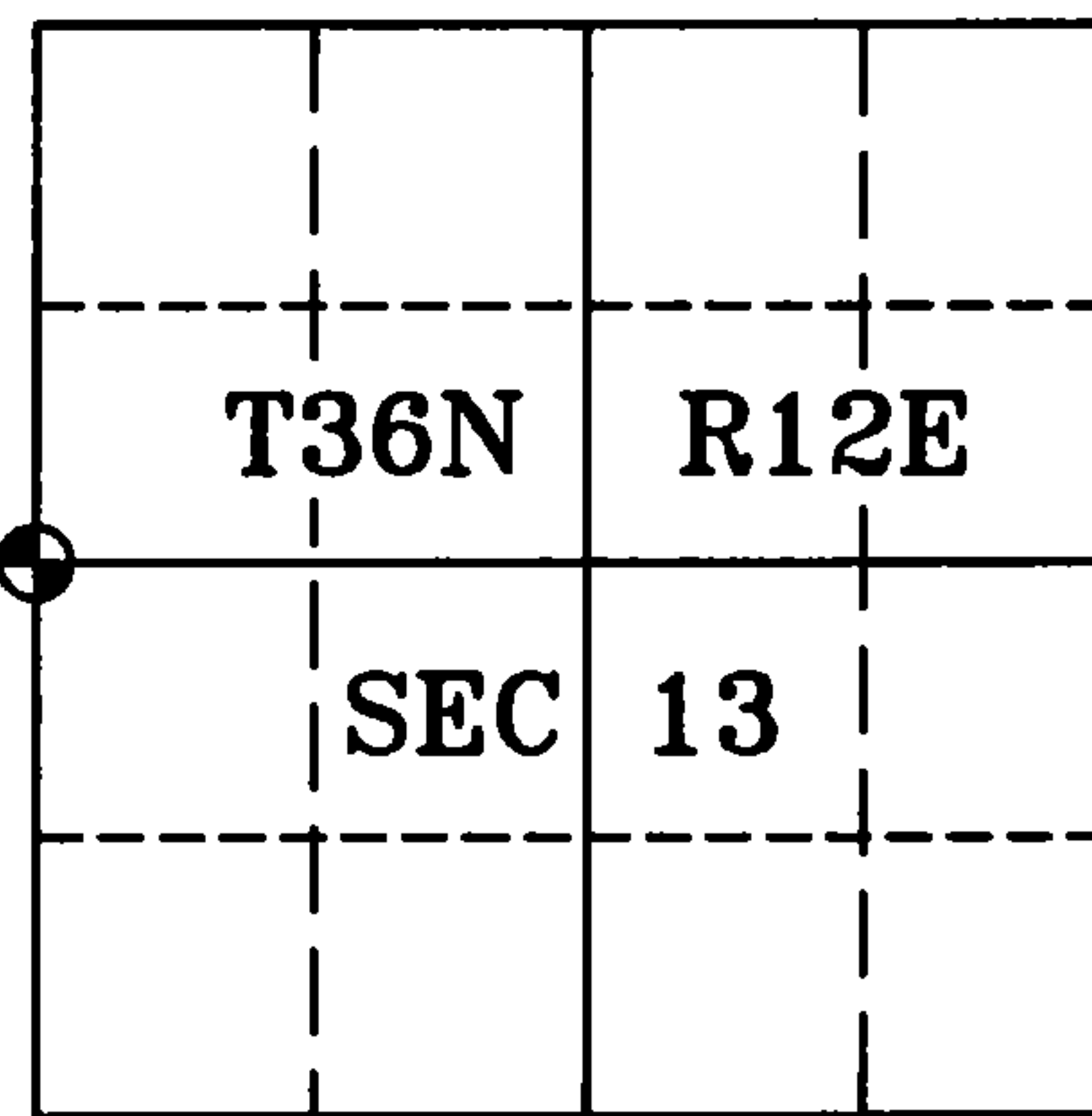
SW Cor.
Sec. 13

N 00°51'00" E

Sketch Not To Scale



Forest County
Grid



I, Michael A. Trembl, RLS
(type or print name) certify that the corner location shown on this record was determined by me or under my direction and control and that this U.S. Public Land Survey Monument Record is correct and complete to the best of my knowledge and belief.

Michael A. Trembl 11/11/08
Signature Date

The West Quarter corner of
Section 13 T. 36 N., R. 12 E.
Forest County, WI

Index No. L-21

43612142000

121