

227123

JAN 22 2019

Time: 11:45 A.M.
Vol.: Corner Restoration
Page Number: 1-21

U.S. PUBLIC LAND SURVEY MONUMENT RECORD

(Prepared and as required by S. A-E 7.08 WI Administrative Code)

The EAST 1/4 corner of Section 2, T. 36 N., R. 13 E., Forest County, WI
Corner was (check all that apply)

- ☐ Restored through acceptance of an obliterated evidence location.
- ☒ Restored through acceptance of a found perpetuated location.
- ☐ Determined to be lost and re-established through proportionate methods.
(show bearings and distances to PLSS corners used for proportioning.)
- ☐ Restored/recovered/re-established in a location that differs from a previously
established position. (Show difference in plan view below.)
- ☐ Check here if additional information is shown on the reverse side of this form.

Describe record evidence, recovered physical evidence, occupational evidence, testimonial evidence,
and all other evidence considered in the recovery/restoration of the corner.

1865 - J.L. Nowlin set original 1/4 section post; Hemlock 12", N10°W, 15 links
Hemlock 20", N17°E, 22 links.

1938 - C.E. Walker set 2" x 5' long iron pipe with brass cap.

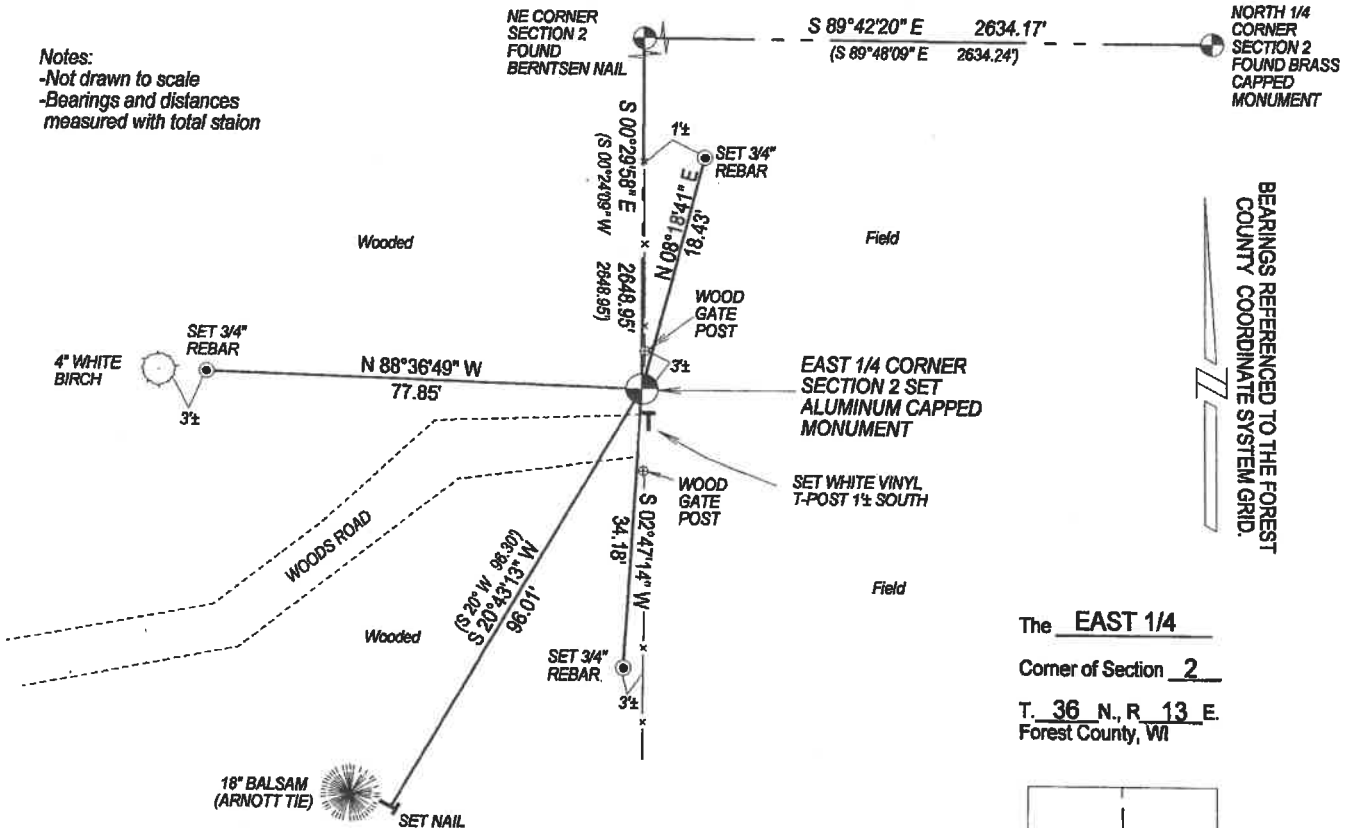
1975 - T. Amott found monument set by Walker, references a new tie; Balsam 8", S20°W, 96.30 feet, and filed a tie sheet.

2019 - I found the bottom portion of the 2" monument set by Walker lying prone. I found the existing tie referenced by
Amott in 1975 in good condition. Using Amott's tie, and bearings and distances referenced in Certified Survey Map
Volume 4 Page 35 located in Section 1, I set an Aluminum Capped Forest County Monument at the Corner location.

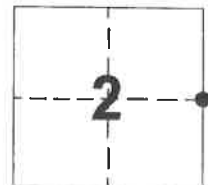
Physical description of the monument set:

I set a 2.375" x 30" aluminum capped monument 2" above surface as the corner, and tied it out as follows.

Describe the accessories used to perpetuate the location of the corner. Include a plan view drawing and indicate accessories
found/set. Describe measuring point on bearing trees. Show any topographic features that would aid in future recovery of the corner.

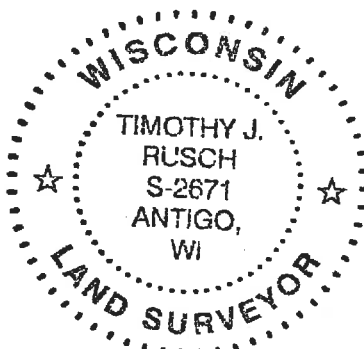


The EAST 1/4
Corner of Section 2
T. 36 N., R. 13 E.
Forest County, WI



● = Location of corner

SURVEYORS SEAL



I, Timothy J. Rusch, certify that the
corner location shown on this record was determined
by me or under my direction and control and that this
U.S. Public Land Survey Monument Record is correct
and complete to the best of my knowledge and belief.

Timothy J. Rusch 01-14-2019
Signature Date

INDEX No.

C-21

43613022000

1/5/27 re-scanned to reflect correct recording date 1/22/19 - CAC/ROD.