

Electronically Filed on 5/5/2026

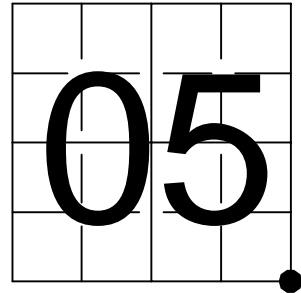
Forest County Land Information Office

# U.S. PUBLIC LAND SURVEY MONUMENT RECORD

NOTE: This form is intended and designed to fulfill all requirements of Wisconsin Administrative Code, Chapter A-E 7.08 U.S. Public Land Survey Monument Record (3) (a-i)

A-E 7.08(3)(a) Identity of corner:  
Southeast Corner Section 05,  
Township 36 North, Range 13 East  
of the Fourth Principal Meridian,  
Town of Lincoln, Forest County, Wisconsin

WISCRS - FOREST COUNTY  
N: 589,794.939 USft (XXX,XXX.XXX)  
E: 841,515.100 USft (XXX,XXX.XXX)  
Datum: NAD83 (2011)  
GNSS Method RTN  
GNSS Control WISCORS VRS



The coordinate value shown has been verified by the average of two or more GPS observations at a markedly different time. Coordinates shown in parenthesis are previously published values.

A-E 7.08(3)(b)

Original Surveyor: James L. Nowlin - June 2, 1865 to June 12, 1865

Cedar 6 - N 70° E, 20 Links, Spruce 5 - S 86° W, 5 Links

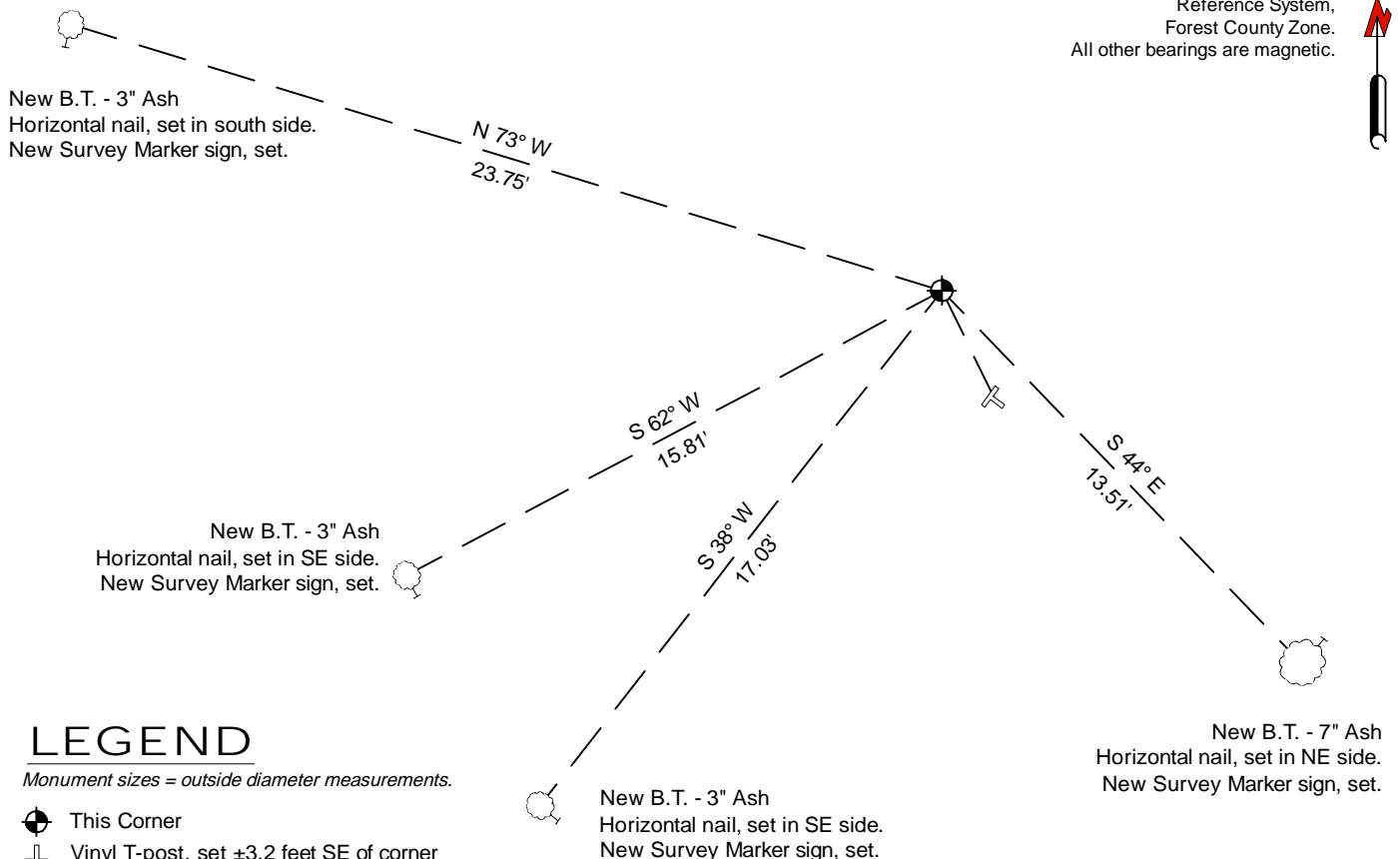
THENCE:

- 1993 - Surveyor 1107 - William B. Cochrane - indicates this position as "2 1/2" diameter aluminum pipe, 60 inches long" on county record Map #361304-19930000.
- July 1, 2005 - Surveyor 2197 - Micheal A. Treml - indicates this position as "existing 2 1/2" dia. Forest County alum. mon." on county record Map #361305-20050701.

April 1, 2026 - I found a 2.4" diameter aluminum pipe monument with a 3.25" diameter aluminum cap (not stamped). The monument is in an ash / cedar marsh and near flush with grade. I established 4 new reference monuments as shown below. SE

A-E 7.08(3)(c)(d) Plan view of corner with references to at least 4 witness monuments.

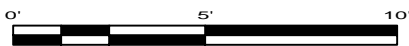
Bearings listed to the nearest second are referenced to the: Wisconsin Coordinate Reference System, Forest County Zone. All other bearings are magnetic.



## LEGEND

Monument sizes = outside diameter measurements.

- This Corner
- Vinyl T-post, set ±3.2 feet SE of corner
- Galvanized nail, set or nail found as shown

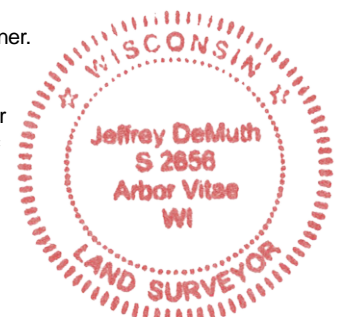


A-E 7.08(3)(e) 1865 Surveyor set a post, 1993 Surveyor found an "old squared cedar post, and old bearing tree". He monumented the corner with a 2 1/2 inch diameter aluminum pipe, 60 inches long, subsequent surveyors found the same, as did I in 2026. SE

A-E 7.08(3)(f) I accept this monument in good faith as a FOUND PERPETUATED LOCATION of the corner.

A-E 7.08(3)(g)(h) This corner was not determined through lost-corner-proportionate methods.

A-E 7.08(3)(i) I, Jeffrey L. DeMuth, Professional Land Surveyor No. S-2656, hereby certify that the corner location on this record was determined by me or under my direction and control, and that this U.S. Public Land Survey Monument Record is correct and complete to the best of my knowledge, and belief.



SIGNATURE

April 2, 2026

DATE

43613050000