

Document Number

175891

REGISTER'S OFFICE
Forest County, Wis.
Received for record this 18th day
of June A.D., 2002 at
4:00 o'clock P.M. and recorded
in Vol. Corner Restoration
page E-7

Kay Swanson, Deputy
Register of Deeds

U.S. PUBLIC LAND SURVEY MONUMENT RECORD

(As Required by WI Adm. Code)

History of original corner establishment and subsequent restorations and descriptions of any record, monument, occupational, testimonial or other evidence considered:

1865 - James L. Nowlin, set original corner post and made the following B.T.'s:

Birch, 8", S 59° E, 30 lks., 19.80 feet.

Birch, 12", N 55° W, 28 lks., 18.48 feet.

2002 - I found no evidence of the original corner post or accessories.

I found a wood post with a 4" X 4" squared top along remains of an old N-S fence line.

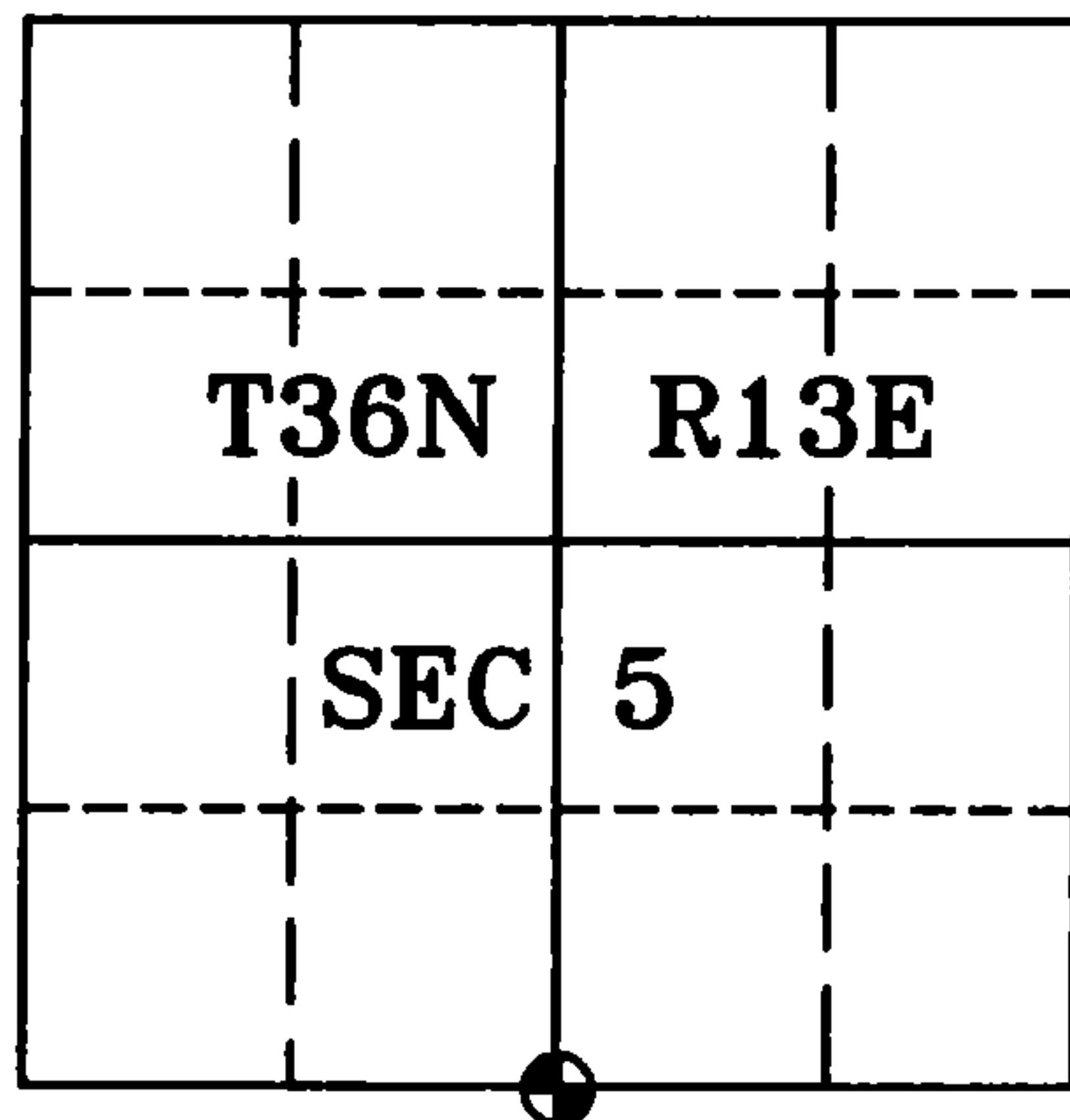
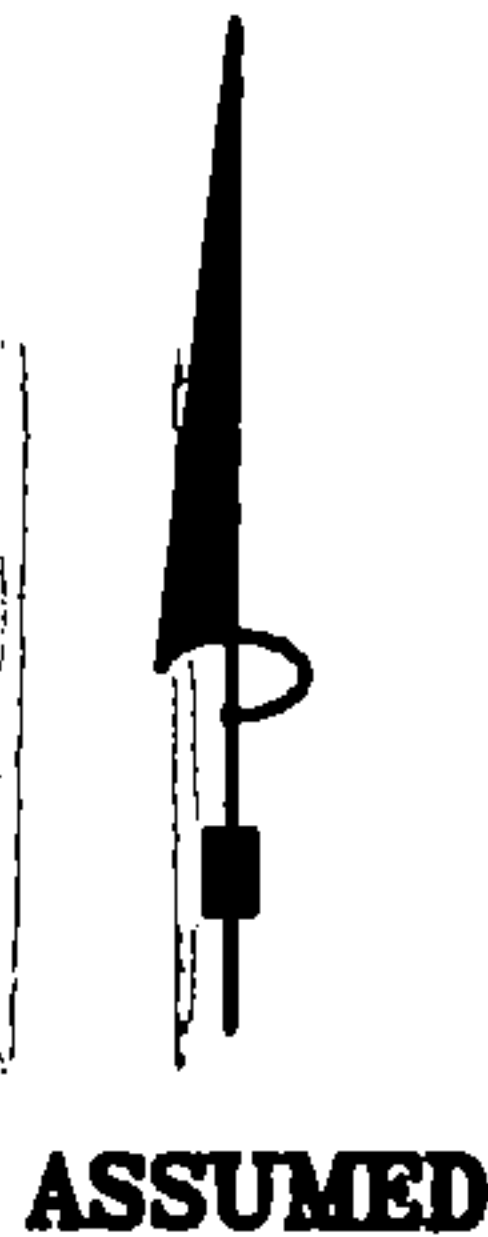
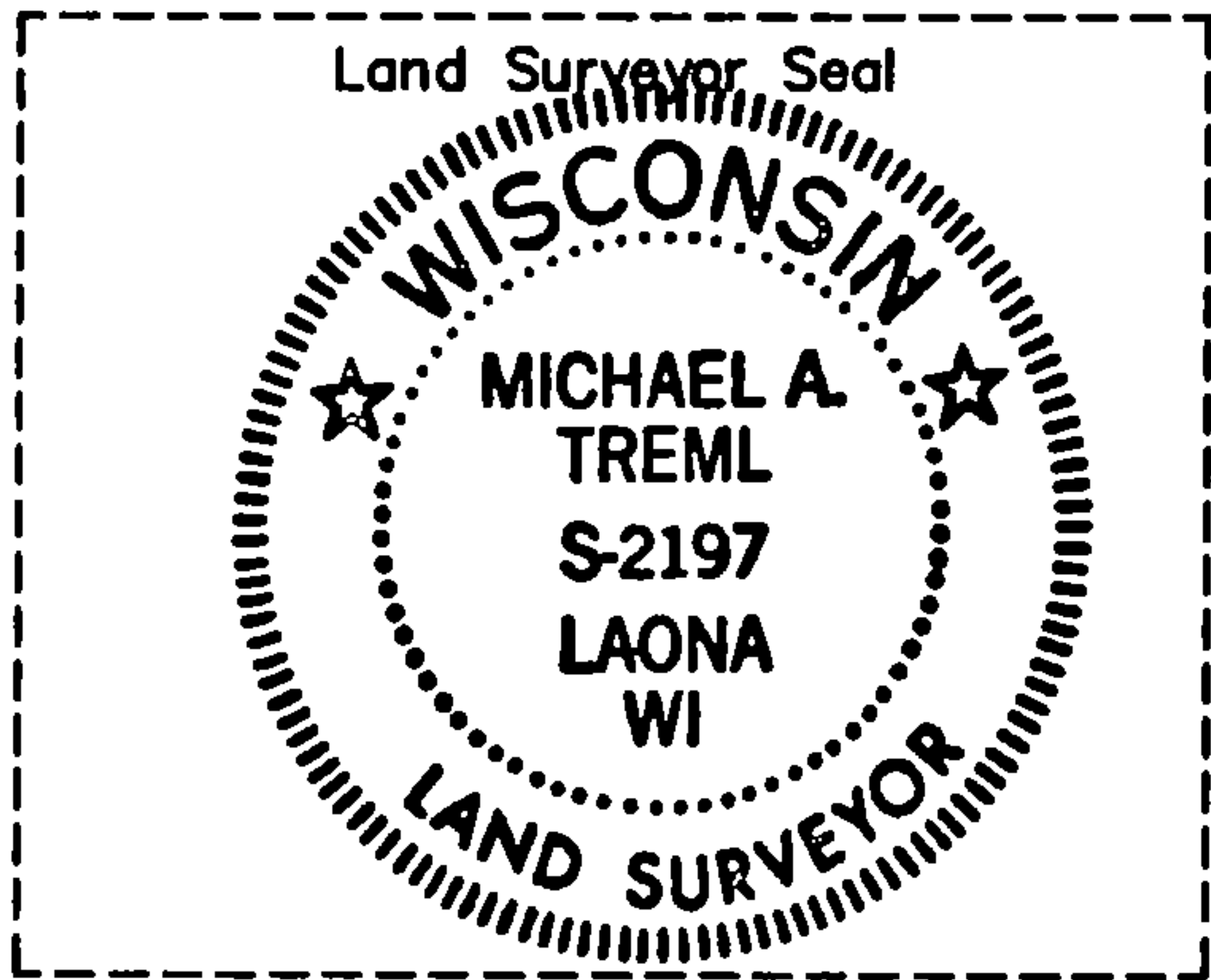
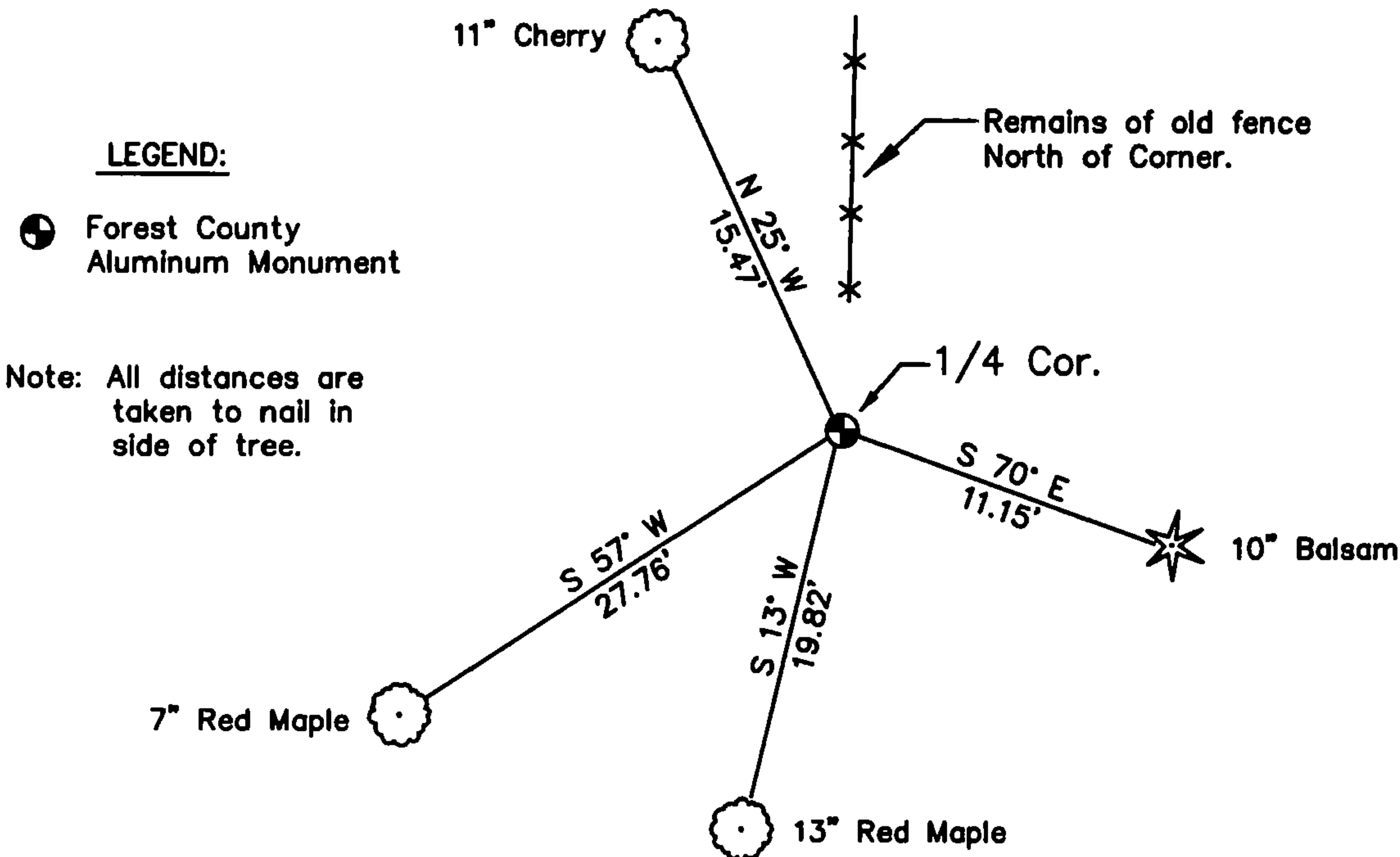
I accepted the wood post as the best available evidence of the corner position.

I Set a 2 1/2" diameter Forest County Aluminum Monument stamped for the 1/4 corner.

Corner was: (Check All That Apply)

- ☐ Restored through acceptance of an obliterated evidence location.
☒ Restored through acceptance of a found perpetuated location.
☐ Considered a lost corner and reestablished through lost corner proportionate methods (include a plan view drawing showing distances and directions to other Public Land Survey Corners used for proportioning and determining the corner location).
☐ Restored or reestablished in a location that differs from a previous restoration or reestablishment (include a plan view drawing and indicate what was set and/or found).

Describe the monument and accessories used to perpetuate the location of this corner (include a plan view drawing and indicate what was set and/or found).



I, Michael A. Trembl, RLS
(type or print name) certify that the corner location shown on
this record was determined by me or under my direction and
control and that this U.S. Public Land Survey Monument Record
is correct and complete to the best of my knowledge and belief.

Michael A. Trembl 6/11/02
Signature Date

The South Quarter corner of
Section 5 T. 36 N., R. 13 E.
Forest County, WI

Index No. E-7

43613050020