

CERTIFIED LAND CORNER RESTORATION

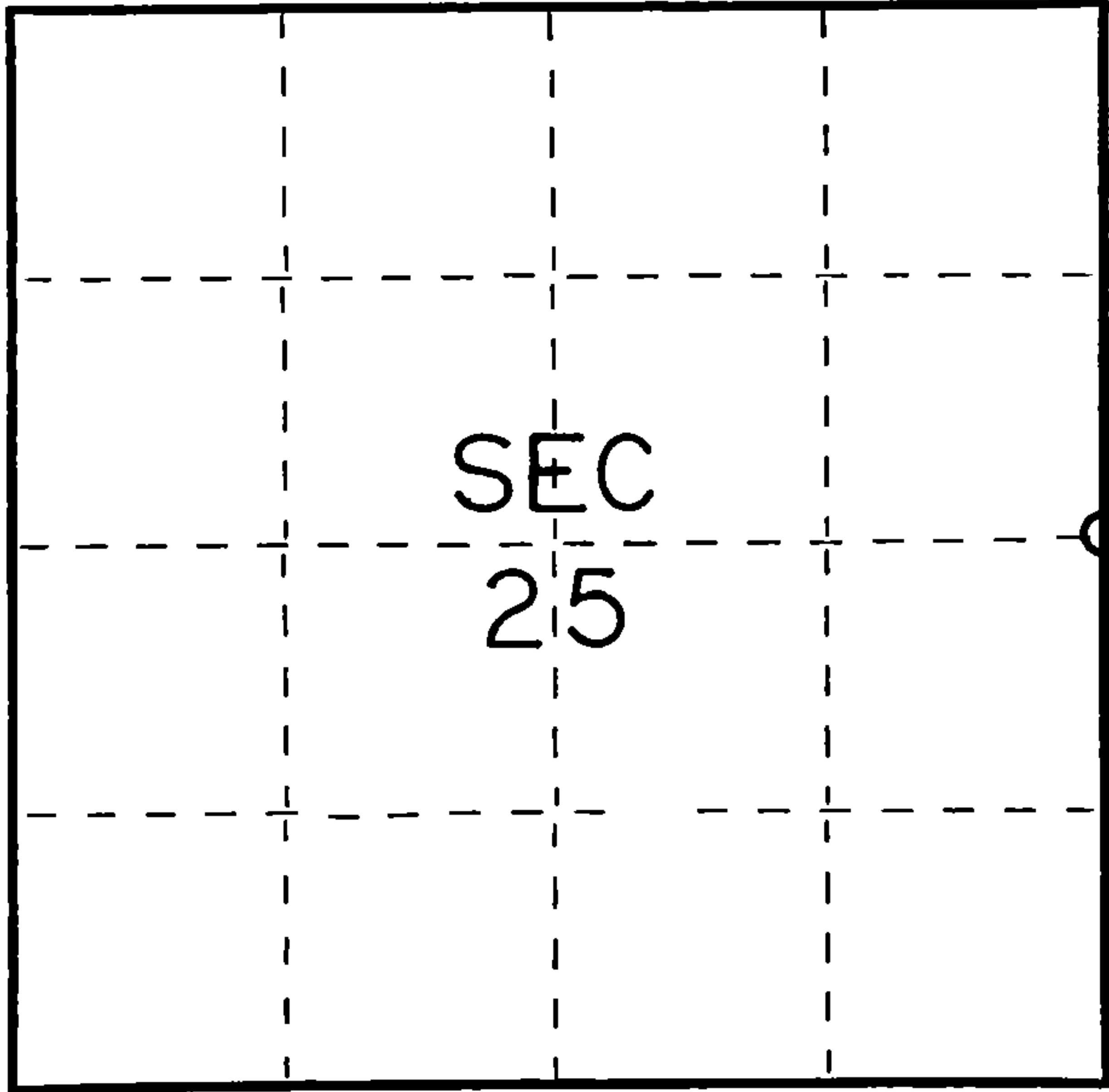
Index No. **T25**

State of Wisconsin }
County of Forest } ss.

I Thomas R. Arnott, do hereby
certify that on the 8th day
of January, 19 76, I found
evidence of the 1/4
corner of sections 25 & 30
Township 36, North, Range
13 & 14 E, Fourth Principal Meridian,
as described hereon; and that from this evidence
I established a new monument and accessories
as described hereon to perpetuate the original
location of this corner.

Resident witnesses:

FORM 985 W. C. MILLER CO., MILWAUKEE



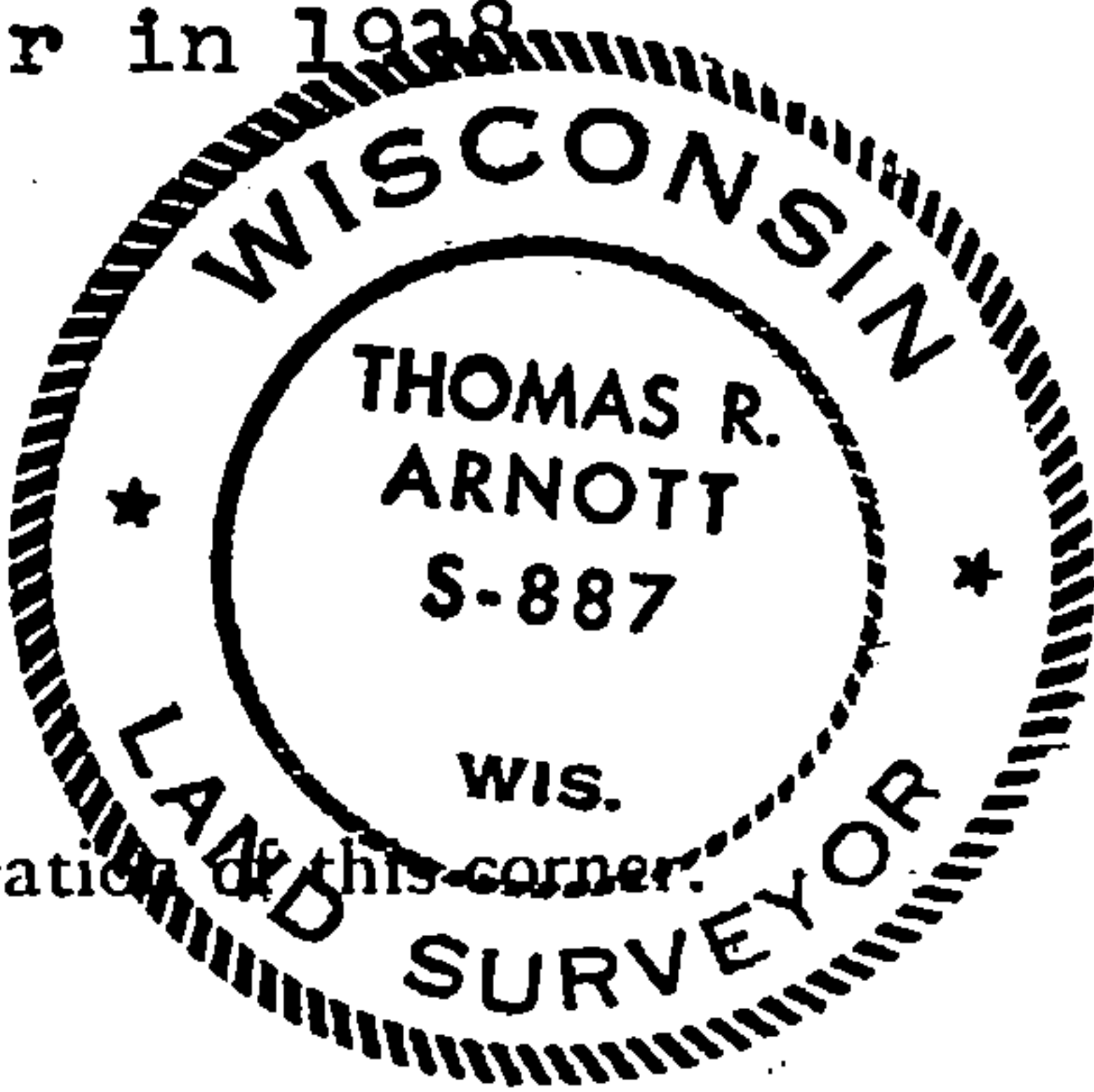
○ = Corner monument restored.

History of original corner establishment:

Hemlock	10	N40E	58 Lks.
Hemlock	12	S30W	32 Lks.

Description of corner evidence found:

2" iron pipe with brass cap 5' long set by C.E. Walker in 1928



43613252000

Description of monument and accessories I established to perpetuate the original location of this corner:

Left monument set by Walker

Ties:

W. Spruce	6	S66E	7.45 feet
W. Spruce	6	S1E	17.45 feet
W. Spruce	6	S85W	4.85 feet

Dated at Crandon, Wis., this 15th day of January, 19 76.

Signature Thomas R. Arnott Title Surveyor Registration No. S-887
(County Surveyor, Registered Land Surveyor, or other duly authorized official)

Office of Register of Deeds, County of Forest, I hereby certify that the within
instrument was filed in this office for record on the 15th day of January, 19 76
at 3 o'clock P. M.

Eugene Staszny Document Number **108577**
(Register of Deeds)

By _____ Deputy

Document Number
189308

REGISTER'S OFFICE
Forest County, Wis.
Received for record this 18th day
of November A.D., 2005 at
3:55 o'clock P.M. and recorded
in Vol. Corner Restoration
page T-25
Kay Swanson, Deputy
Register of Deeds

U.S. PUBLIC LAND SURVEY MONUMENT RECORD

(AS REQUIRED BY S. A-E 5.02, WI ADM. CODE)

HISTORY OF ORIGINAL CORNER ESTABLISHMENT AND SUBSEQUENT RESTORATIONS AND DESCRIPTION OF ANY RECORD, MONUMENT, OCCUPATIONAL, TESTIMONIAL, OR OTHER EVIDENCE CONSIDERED:

1858 - ALFRED MILLARD, SURVEYOR, SET POST

SET THE FOLLOWING WITNESSES:
HEMLOCK 10" N40°E 58 LINKS
HEMLOCK 12" S30°W 32 LINKS

1938 - C.E. WALKER, SET 2" IRON PIPE 5' LONG WITH BRASS CAP.

1976 - THOMAS R. ARNOTT, SURVEYOR, S-887, FOUND MONUMENT SET BY C.E. WALKER.

SET THE FOLLOWING WITNESSES:
WHITE SPRUCE 6" S66°E 7.45 FEET
WHITE SPRUCE 6" S01°E 17.45 FEET
WHITE SPRUCE 6" S85°W 4.85 FEET

CORNER WAS: (CHECK ALL THAT APPLY)

- ☐ RESTORED THROUGH ACCEPTANCE OF AN OBLITERATED LOCATION
☒ RESTORED THROUGH ACCEPTANCE OF A FOUND PERPETUATED LOCATION
☐ CONSIDERED A LOST CORNER AND REESTABLISHED THROUGH LOST CORNER PROPORTIONATE METHODS (INCLUDING A PLAN VIEW DRAWING SHOWING DISTANCES AND DIRECTIONS TO OTHER PUBLIC LAND SURVEY CORNERS USED FOR PROPORTIONING AND DETERMINING THE CORNER LOCATION)
☐ RESTORED OF REESTABLISHED IN A LOCATION THAT DIFFERS FROM A PREVIOUS RESTORATION OF REESTABLISHMENT (INCLUDE A PLAN VIEW DRAWING AND INDICATE WHAT WAS SET AND/OR FOUND)

DESCRIBE THE MONUMENT AND ACCESSORIES USED TO PERPETUATE THE LOCATION OF THIS CORNER. (INCLUDE A PLAN VIEW DRAWING AND INDICATE WHAT WAS SET AND/OR FOUND)

FOUND 2" IRON PIPE w/BRASS CAP.

FOUND THE FOLLOWING WITNESSES:

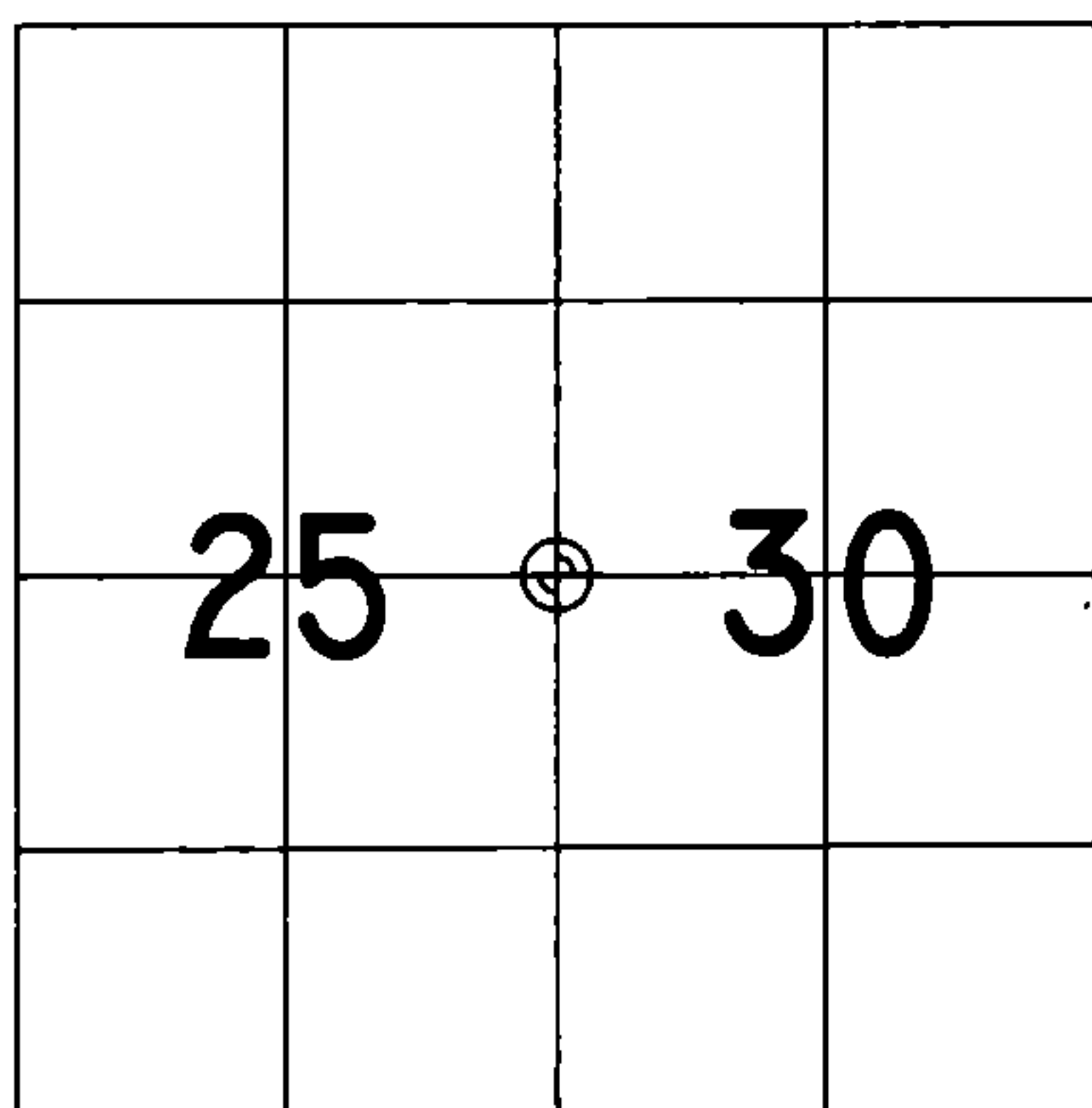
WHITE SPRUCE 6" WEST 4.94 FEET - SET D.H. NAIL IN TREE.
WHITE SPRUCE 8" S63°E 7.27 FEET - SET D.H. NAIL IN TREE.

SET THE FOLLOWING WITNESSES:

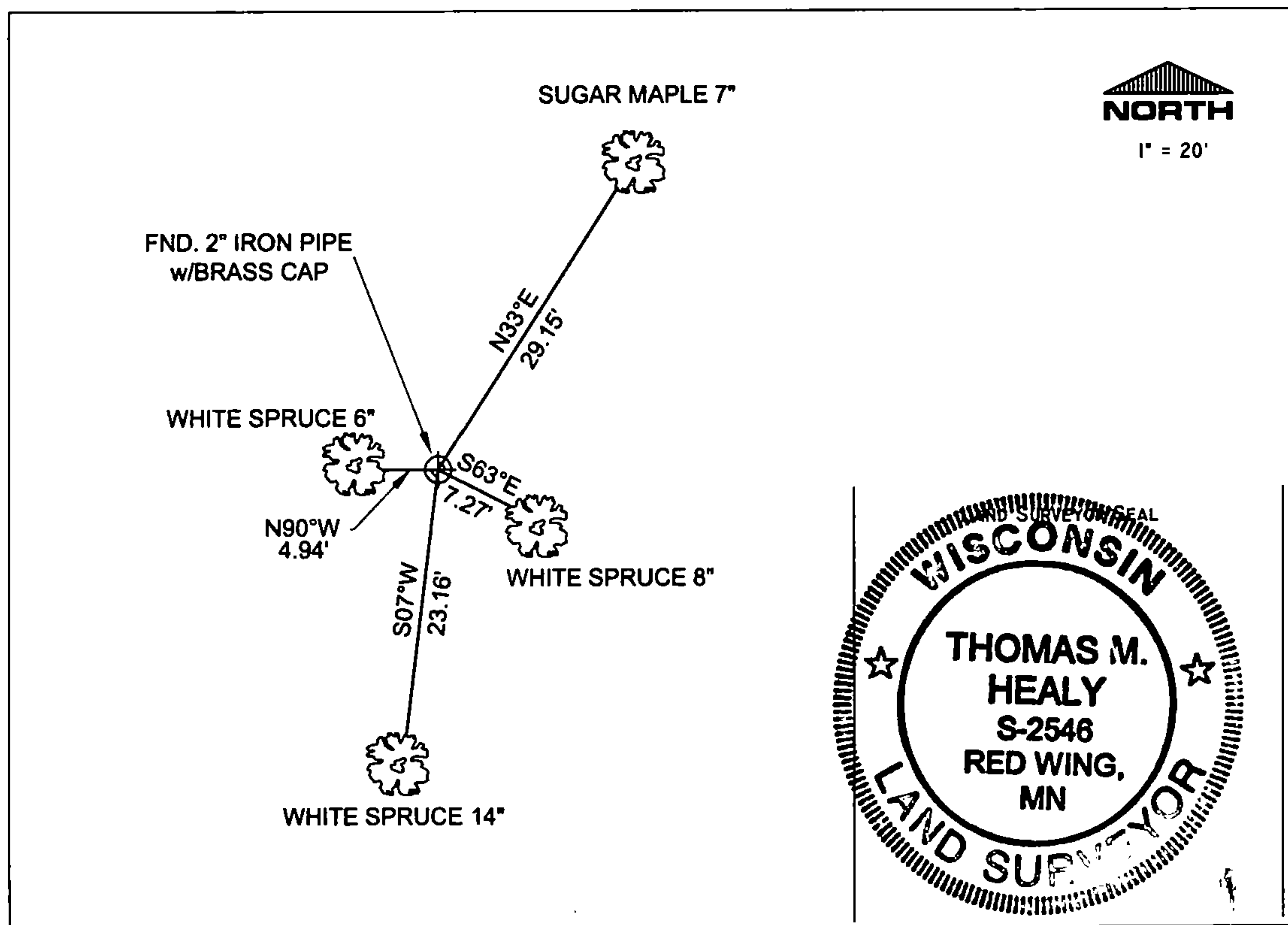
SUGAR MAPLE 7" N33°E 29.15 FEET - SET D.H. NAIL IN TREE.
WHITE SPRUCE 14" S07°W 23.16 FEET - SET D.H. NAIL IN TREE.

ALL TREES HAVE CHEST & STUMP BLAZES.

THE EAST 1/4
CORNER OF SECTION 25,
T. 36 N., R. 13 E.,
FOREST COUNTY, WISCONSIN



⊕ = LOCATION OF CORNER



I, THOMAS M. HEALY R.L.S. 2546

(TYPE OR PRINT NAME) CERTIFY THAT THE CORNER LOCATION SHOWN ON THIS ABOVE RECORD WAS DETERMINED BY ME OR UNDER MY DIRECTION AND CONTROL AND THAT THIS U.S. PUBLIC LAND SURVEY MONUMENT RECORD IS CORRECT AND COMPLETE TO THE BEST OF MY KNOWLEDGE AND BELIEF.

INDEX No. T-25

SIGNATURE

DATE

Th M. Healy 11-17-05

43613252000

T-25