



Stock No. 26273
DOCUMENT NUMBER
145200

FORM 985 H. C. MILLER CO., MILWAUKEE

State of Wisconsin

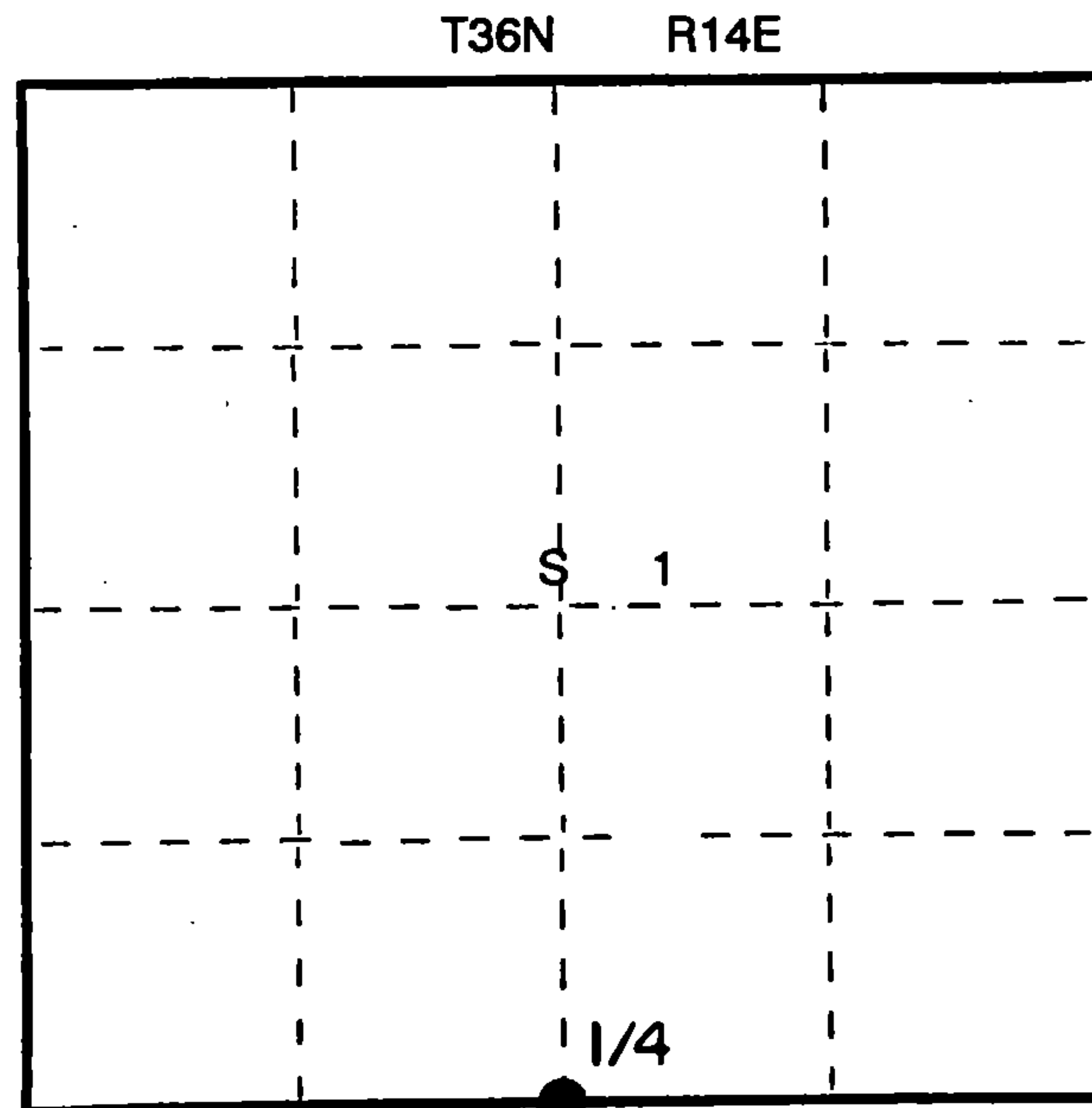
County of FOREST } ss.

I, Glen Barker, do hereby
certify that on the 17th day
of June, 1991, I ~~rest~~
~~established~~ the Quarter Section
corner of Section 1 & 12
Township 36, North, Range
14 East, Fourth Principal Meridian,
as described hereon; and that from this evidence
I established a new monument and accessories
as described hereon to perpetuate the original
location of this corner.

Resident witnesses:

N. Spiess

J. Spiess



○ = Corner monument restored.

CERTIFIED LAND CORNER RESTORATION U.S. PUBLIC LAND SURVEY

Index No. E-23

History of original corner establishment:

Original corner established by James McBride, Deputy Gov't Surveyor in 1859 from which a 10" Hemlock bears N36W, 25 lks. and a 8" Tamarack bears S42E 17 lks.

Description of corner evidence found:

Re-survey of the Section line between Sections 1 & 2, found Quarter Section corner set in 1982 by Consolidated Papers, Inc. to be in error on a proportional measurement reset Quarter Section corner. Total distance from previous recovered southwest and southeast Section corner of Section 1, is 5309.38'.

Set Quarter Section corner 2654.69' intermediate.

Monument sets S03 48'11"E 5.26' of 1982 position.

Description of monument and accessories I established to perpetuate the original location of this corner.

Removed monument of 1982 Survey and reset in present position old BT's:

5"	Ash	N47E	15.76'
9"	Cedar	S85E	24.79'
MARKED N.B.T.'s:			
4"	Cedar	S23E	52.47'
5"	Maple	S14W	27.59'

	T36N	R14E
1/4	S	1
	S	12
	1991	
	S1682	
	C.P.I. 1982	

Dated at Rhineland, Wis., this 24th day of April, 1992Signature Glen Barker Title Registered Land Surveyor Registration No. S-1682
(County Surveyor, Registered Land Surveyor, or other duly authorized official)Office of Register of Deeds, County of Forest, I hereby certify that the within instrument was filed in this office for record on the 13th day of August, 1992 at 9:30 o'clock A. M.

Paul Aschenbrenner
(Register of Deeds)

By _____ Deputy

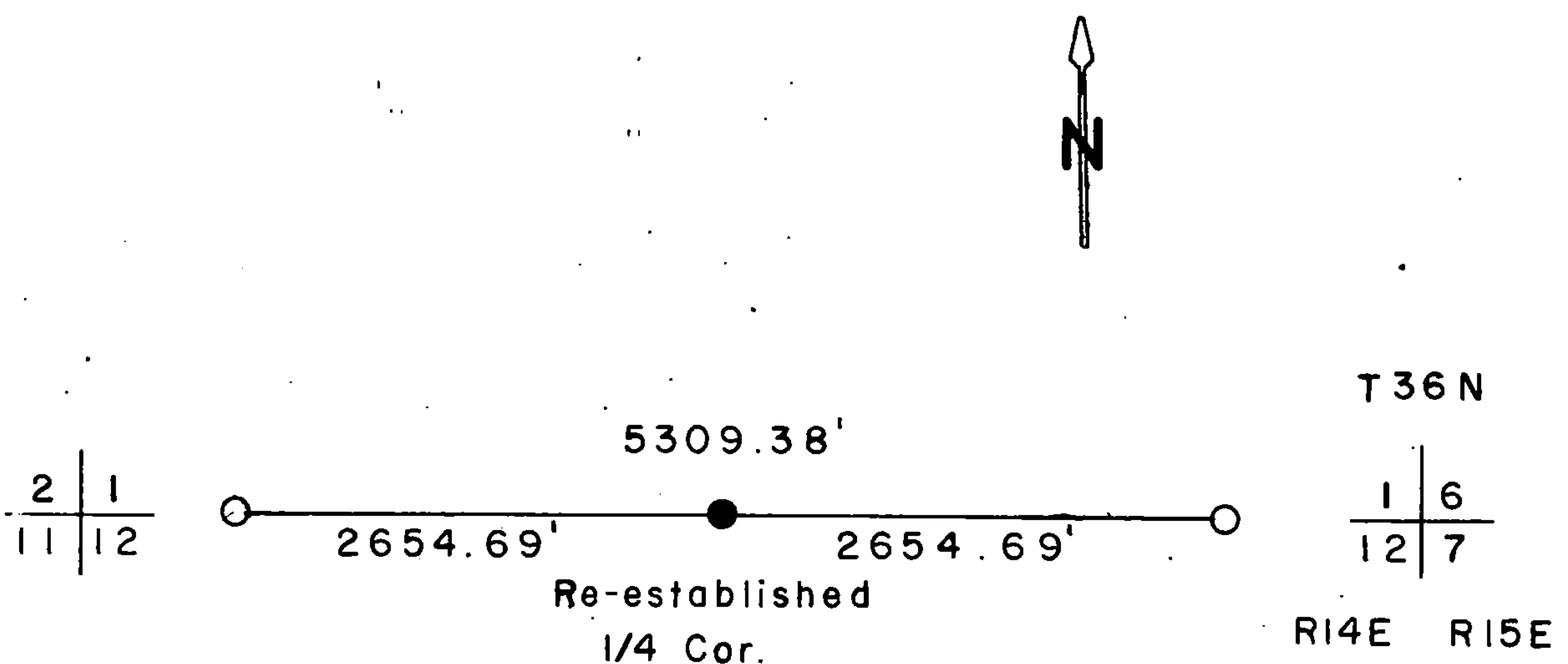
43614010020

e) Describe any material discrepancy between the location of the corner as restored or reestablished and the location of that corner as previously restored or reestablished by distance and direction. Show the discrepancy on the plan view drawing under (d), above. Show the distances between the corner as previously restored or reestablished and (1) the corner as restored or reestablished, and (2) to at least 2 of the witness monuments shown on the drawing in (d), above.

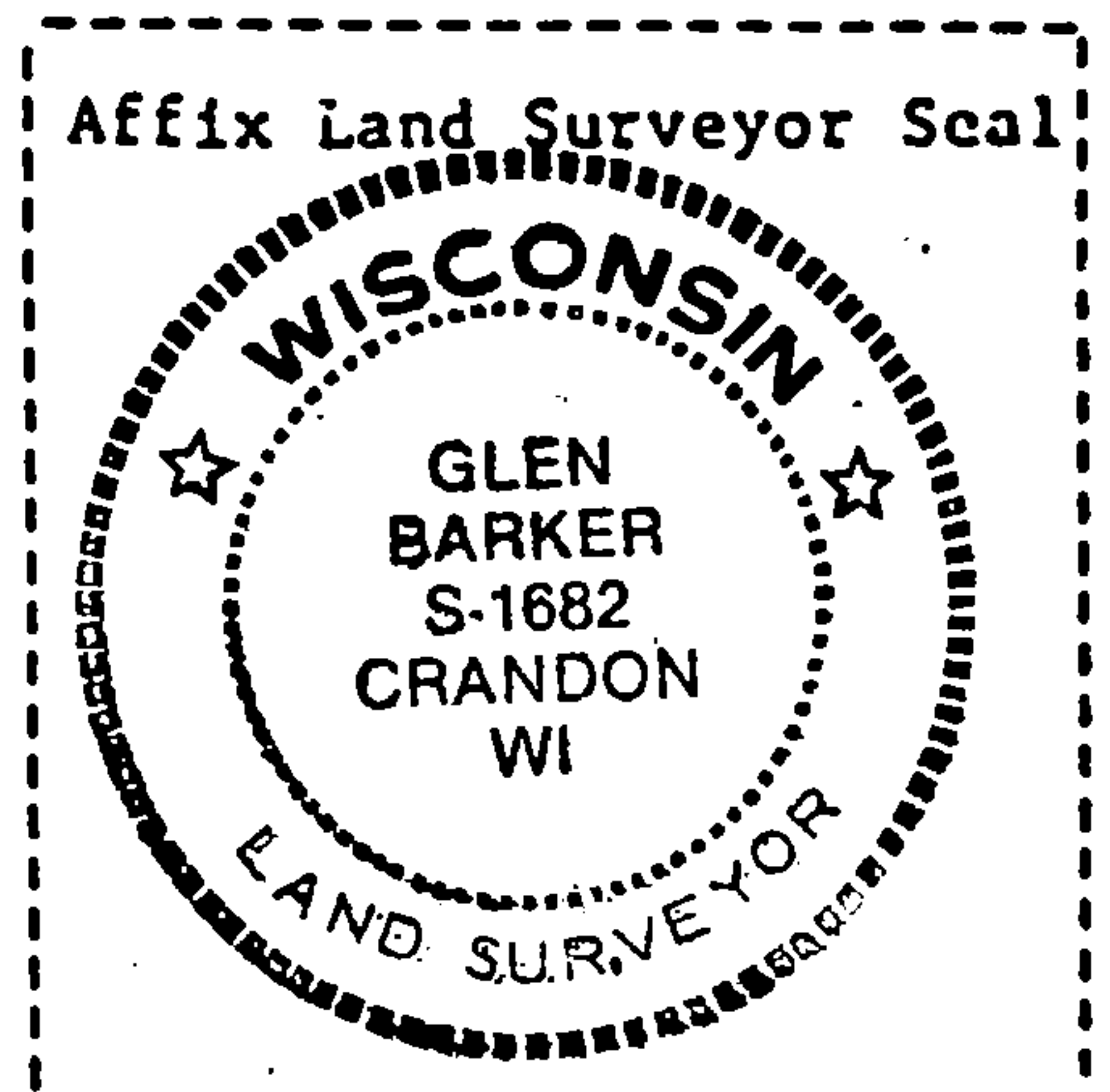
(f) Was the corner restored through acceptance of (1) an obliterated evidence location, or, (2) a found perpetuated location?

(g&h) Was the corner reestablished through lost corner proportionate methods? If so, show the method, including the directions and distances to other public land survey corners used as evidence or used for proportioning in determining the corner location?

Proportionate method



(i) I, Glen Barker
(type or print name) certify that the corner location shown on this record was determined by me or under my direction and control and that this U.S. Public Land Survey Monument Record is correct and complete to the best of my knowledge and belief.



Signature

Date



Stock No. 26273

158094

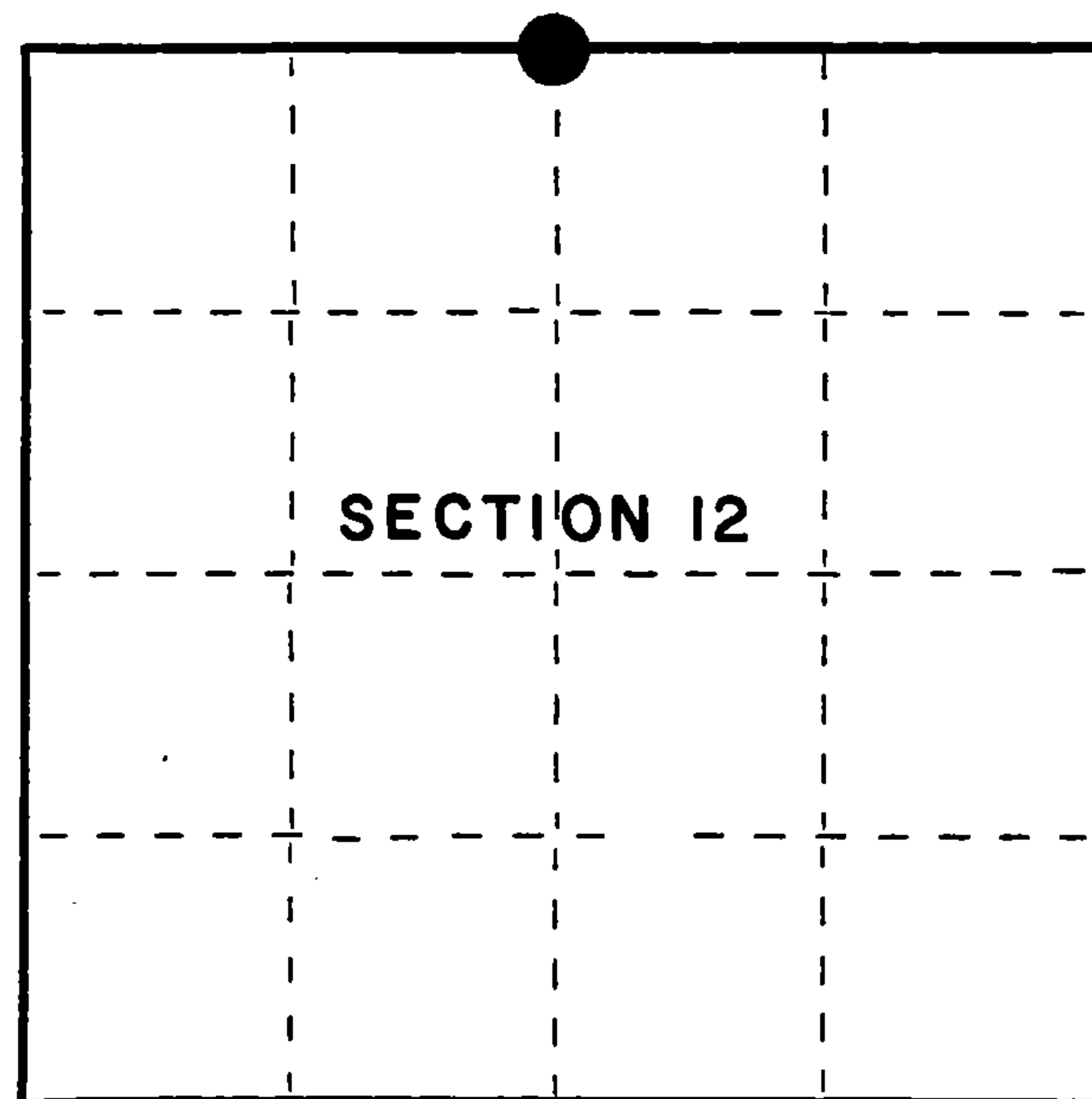
State of Wisconsin

County of Forest

ss.

I, Gary L. Pisoni, do hereby
 certify that on the 19th day
 of August, 1993, I found
 evidence of the North Quarter
 corner of Section 12
 Township 36, North, Range
14 East, Fourth Principal Meridian,
 as described hereon; and that from this evidence
 I established a new monument and accessories
 as described hereon to perpetuate the original
 location of this corner.

Resident witnesses:



● = Corner monument restored.

CERTIFIED LAND CORNER RESTORATION

Index No. E - 23

History of original corner establishment:

Original Government Survey in 1859 by James McBride, deputy surveyor. West corrected between Sections 1 and 12 at 39.90 chains, set Quarter Section post from which the following bear: Hemlock, 10", N 36°W, 25 lks; Tamarack, 8", S 42°E, 17 lks.

In 1982, Daniel K. Pleoger, RLS, found no evidence of the original Quarter corner and set the Quarter corner on line and by single proportionate measurement between the Northeast and Northwest Section corners of Section 12. He set a 2½" dia. aluminum pipe monument with an aluminum cap from which the following bear:

Twin Maple	6"	S 76°W	19.76 feet	Cedar	7"	S 72°E	25.45 feet
				Black Ash	5"	N 66°E	13.0 feet

Description of corner evidence found:

Found the monument and bearing trees as described above:

Cedar	11"	S 84°E	25.02 feet
Ash	6"	N 52°E	15.81 feet

Description of monument and accessories I established to perpetuate the original location of this corner.

Blazed and scribed the following new bearing trees: (Measurements taken to a nail in side of tree)

Cedar	7"	S 22°E	27.70 feet
Red Maple	7"	S 14°W	52.73 feet
Steel sign post		East	1.95 feet

Dated at Iron River, MI, this 12th day of June, 1995.

Signature Gary L. Pisoni Title Land Surveyor Registration No. S-1634
 (County Surveyor, Registered Land Surveyor, or other duly authorized official)

Office of Register of Deeds, County of Forest, I hereby certify that the within
 instrument was filed in this office for record on the 20th day of March, 1997
 at 1:30 o'clock P M.

(Register of Deeds)

By Paul J. Lawrence Deputy

43614010620

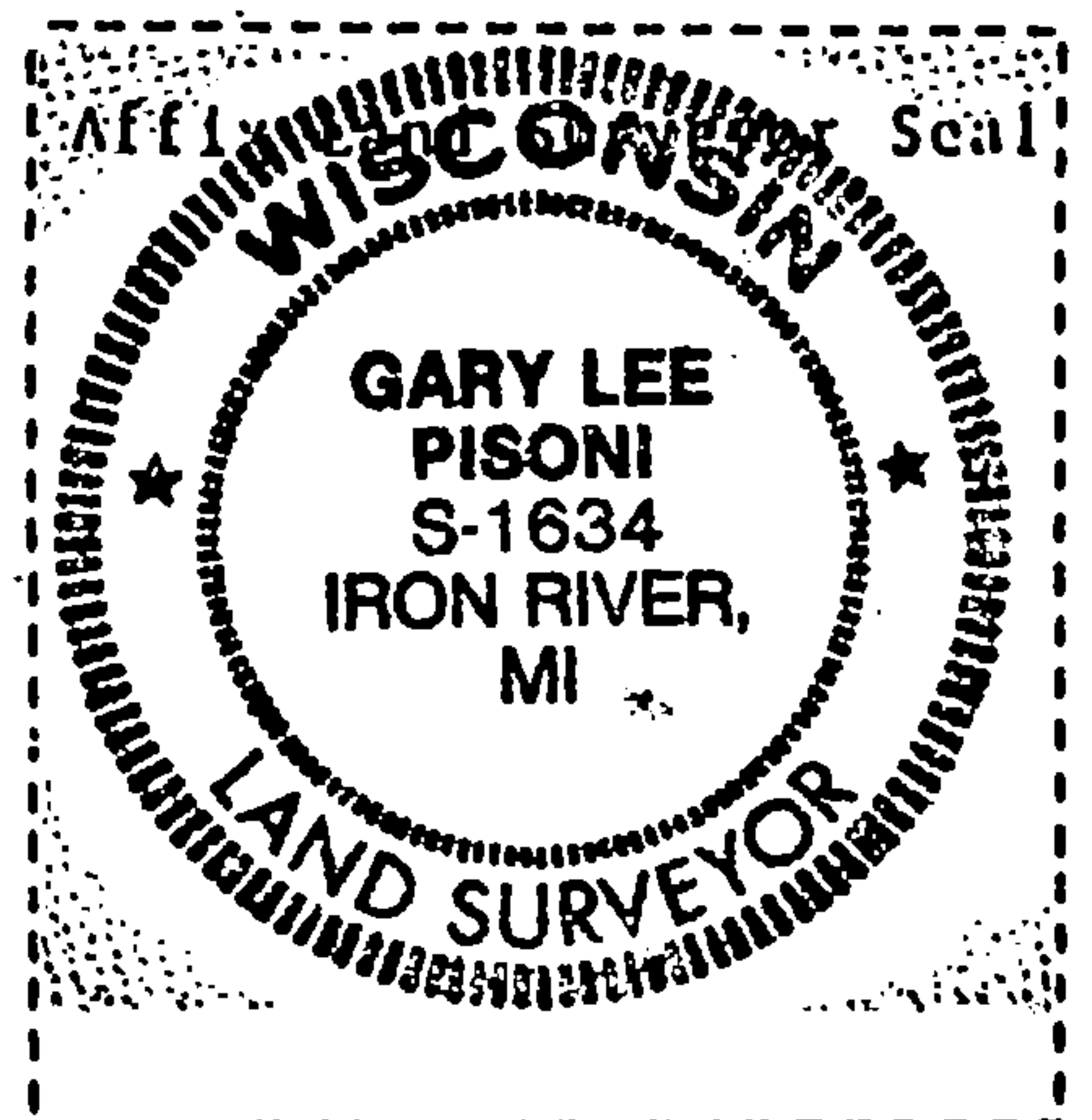
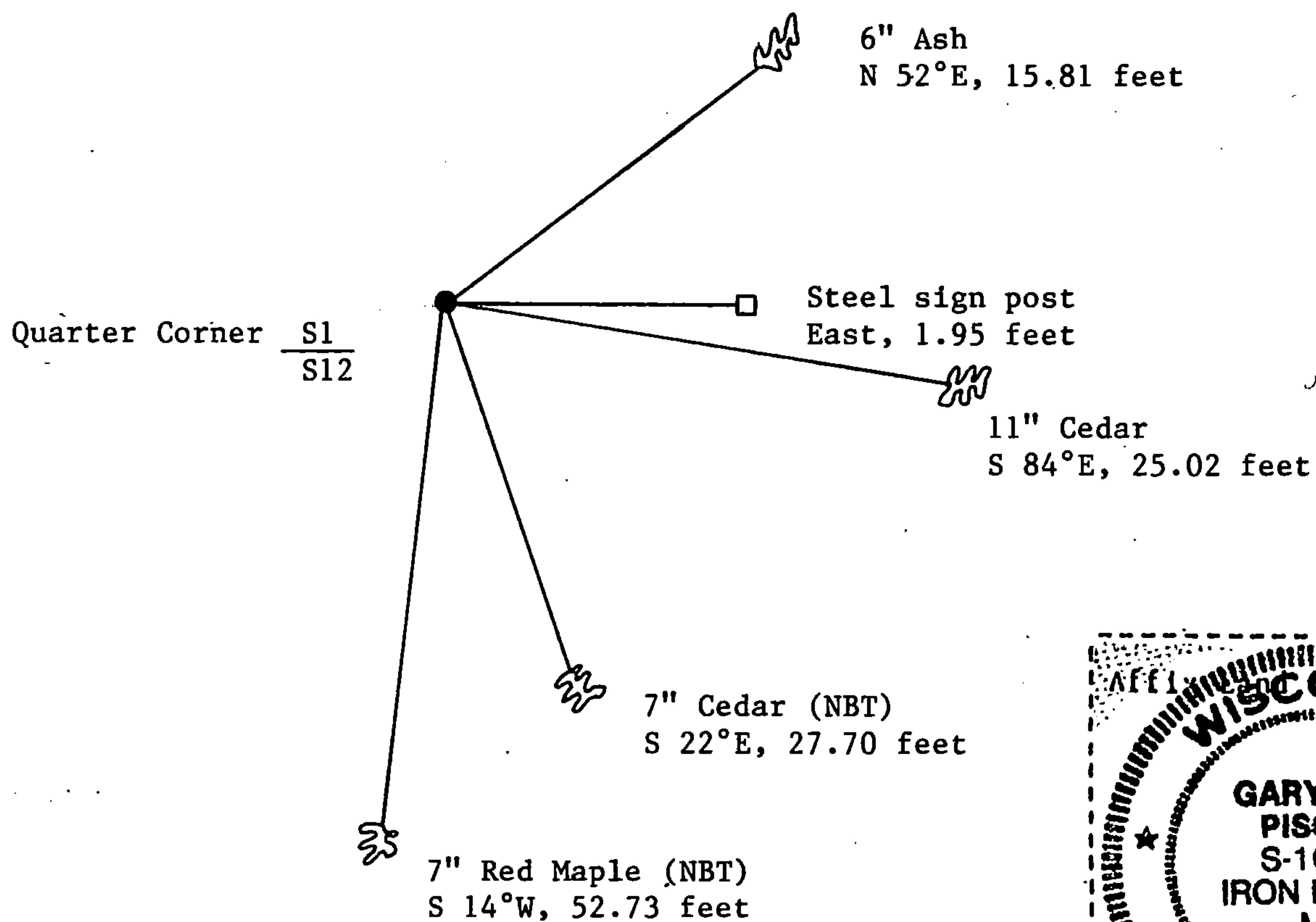
- (c) Describe any material discrepancy between the location of the corner as restored or reestablished and the location of that corner as previously restored or reestablished by distance and direction. Show the discrepancy on the plan view drawing under (d), above. Show the distances between the corner as previously restored or reestablished and (1) the corner as restored or reestablished, and (2) to at least 2 of the witness monuments shown on the drawing in (d), above.

None

- (f) Was the corner restored through acceptance of (1) an obliterated evidence location, or, (2) a found perpetuated location?

Restored through acceptance of a found perpetuated location.

- (gkh) Was the corner reestablished through lost corner proportionate methods? If so, show the method, including the directions and distances to other public land survey corners used as evidence or used for proportioning in determining the corner location?



- (i) 1. Gary L. Pisoni
(Type or print name) certify that the corner location shown on this record was determined by me or under my direction and control and that this U.S. Public Land Survey Monument Record is correct and complete to the best of my knowledge and belief.

Signature

Date _____

Survey requested by:

District Ranger

Date _____

CERTIFIED LAND CORNER RESTORATION

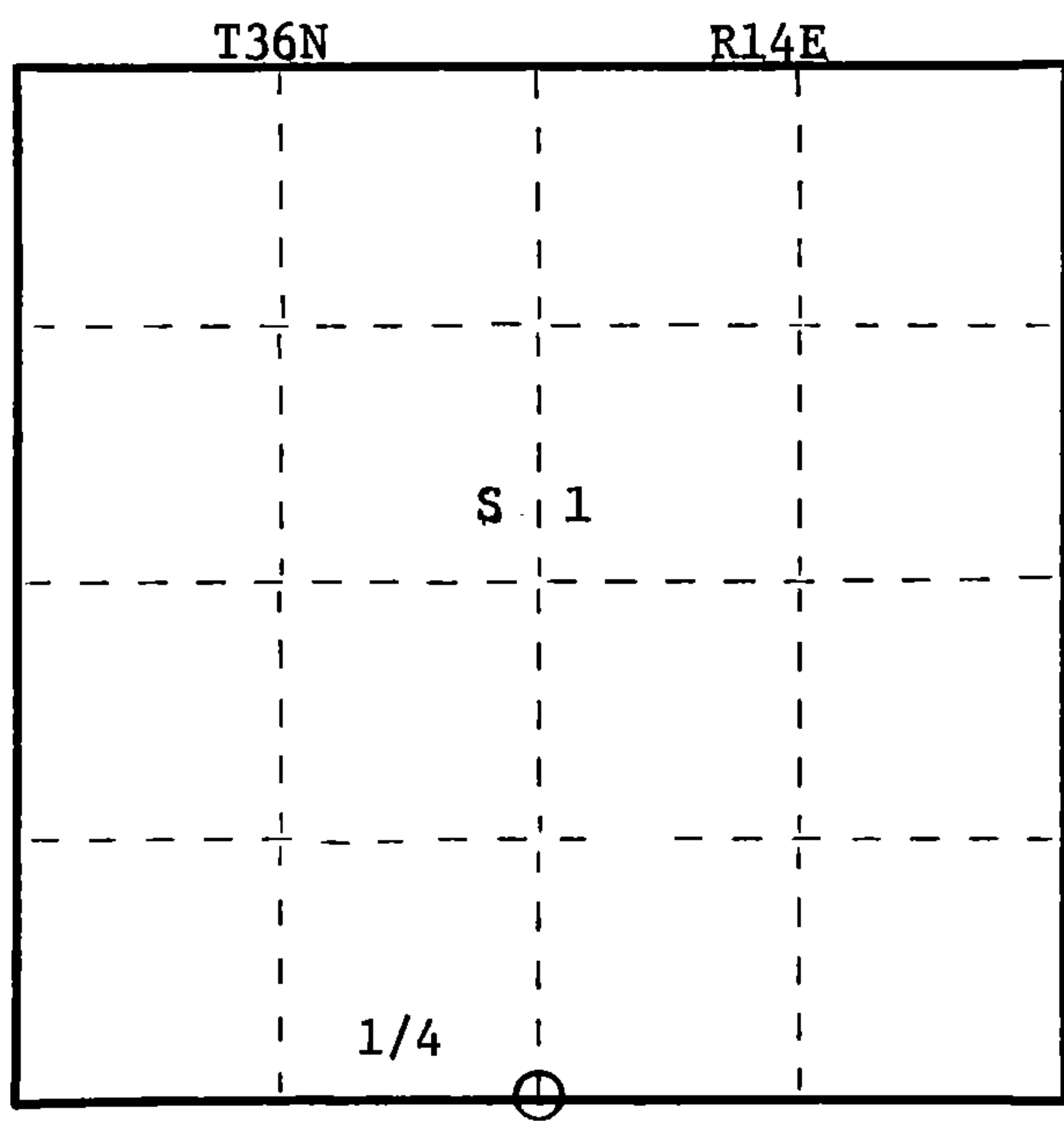
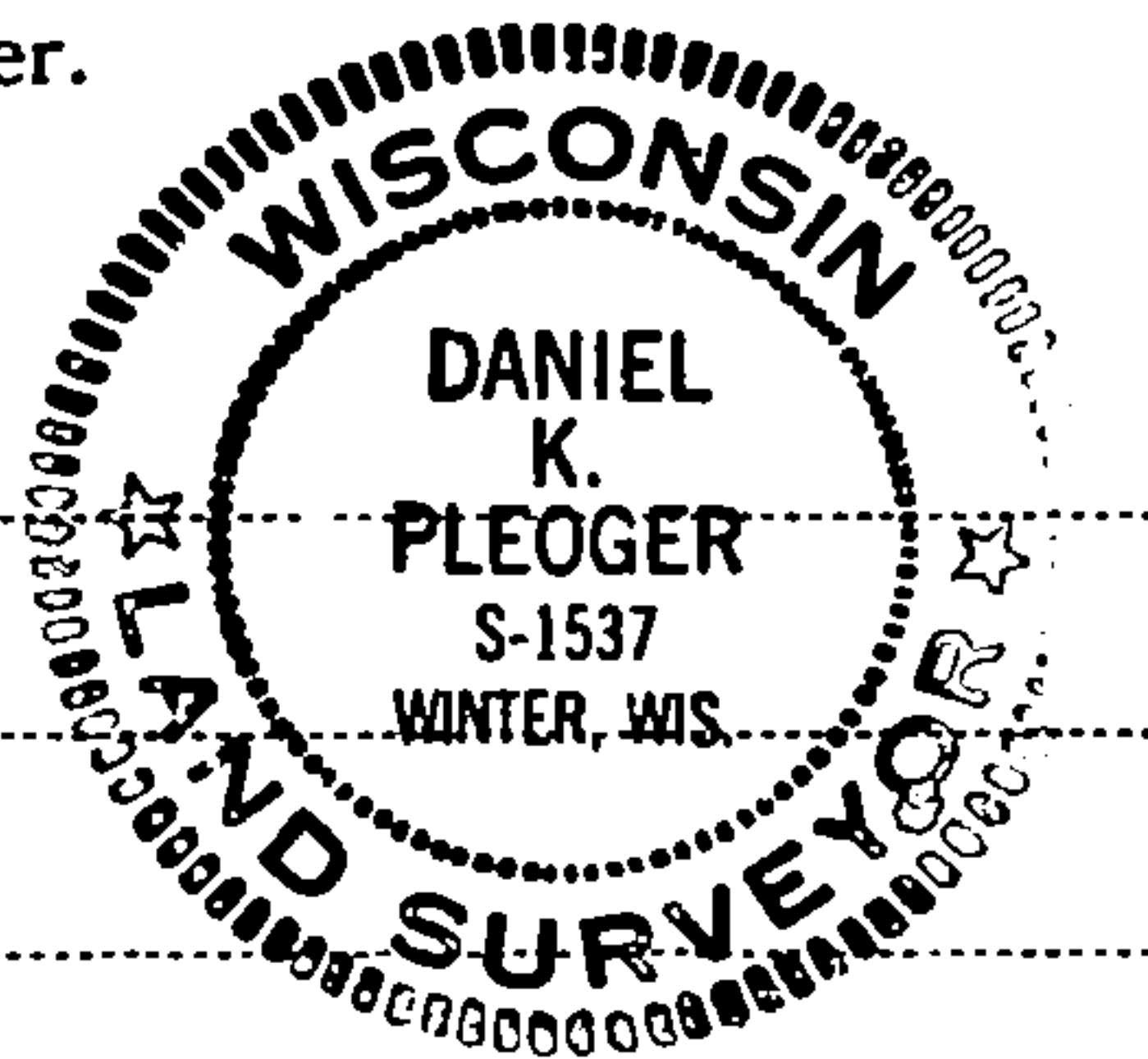
Index No. E-23

E 23

State of Wisconsin }
County of Forest } ss.

I Daniel K. Pleoger, do hereby
certify that on the 30th day
of March, 1982, I ~~found~~ restored
~~evidence of the~~ quarter
corner of sections 1 & 12
Township 36, North, Range
14 East, Fourth Principal Meridian,
as described hereon; and that from this evidence
I established a new monument and accessories
as described hereon to perpetuate the original
location of this corner.

Resident witnesses:



○ = Corner monument restored.

History of original corner establishment:

Original corner established by James McBride, Gov. deputy surveyor in 1859 from which
hemlock 10" bears N36E 17 links and tamarack 8" bears S42E 17 links.

Description of corner evidence found:

Ran traverse from section corner 1-12 - 6-7 T36N R14 & 15E to section corner
1-2-11-12 T36N R14E for a distance of 5309.56 ft. at bearing S88-05-58W.
Set 1/4 corner 2654.78 ft. intermediate.

Description of monument and accessories I established to perpetuate the original location of this corner.
Set a 2 1/2" A-1 federal monument with alloy cap stamped:

Monument projects 6" above ground.

Marked NBTs:

- Twin maple 6" S76W 19.76 ft.
- Cedar 7" S72E 25.45 ft.
- Black ash 5" N66E 13.0 ft.
- Scribed 1/4 - B.T.

S1537
T36N R14E
S 1
1/4 S 12
CPI - 1982

Dated at Rhineland, Wis., this 18th day of May, 1982

Signature Daniel K. Pleoger Title Registered Land Surveyor Registration No. 1537
(County Surveyor, Registered Land Surveyor, or other duly authorized official)

Office of Register of Deeds, County of Forest, I hereby certify that the within
instrument was filed in this office for record on the 15th day of June, 1982
at 10:00 o'clock A. M.

Eugene Statezny
(Register of Deeds)

By Sharon Mueller Deputy

DOCUMENT NO.
121694

FORM 985 H. C. MILLER CO., MILWAUKEE

43014C10020