

Document Number  
173806

REGISTER'S OFFICE  
Forest County, Wis.  
Received for record this 11<sup>th</sup> day  
of December A.D., 2001 at  
9:10 o'clock A.M. and recorded  
in Vol. CORNER RESTORATION  
page A-19  
Kay Swanson, Deputy  
Register of Deeds

## U.S. PUBLIC LAND SURVEY MONUMENT RECORD

(As Required by WI Adm. Code)

History of original corner establishment and subsequent restorations and descriptions of any record, monument, occupational, testimonial or other evidence considered:

1857 - Alfred Millard, set original corner post and made the following B.T.'s:

Sugar, 12", N 50° E, 46 lks., 30.36 feet.  
Y. birch, 18", S 40° W, 17 lks., 11.22 feet.

2001 - I found no evidence of the original corner. Reestablished One-quarter corner midpoint and on line between Section corner to the West common to Sections 2, 3, 34 & 35 and Section corner to the East common to Sections 1, 2, 35 & 36. Set a 2" Dia. Forest County Aluminum monument for the One-quarter corner.

Corner was: (Check All That Apply)

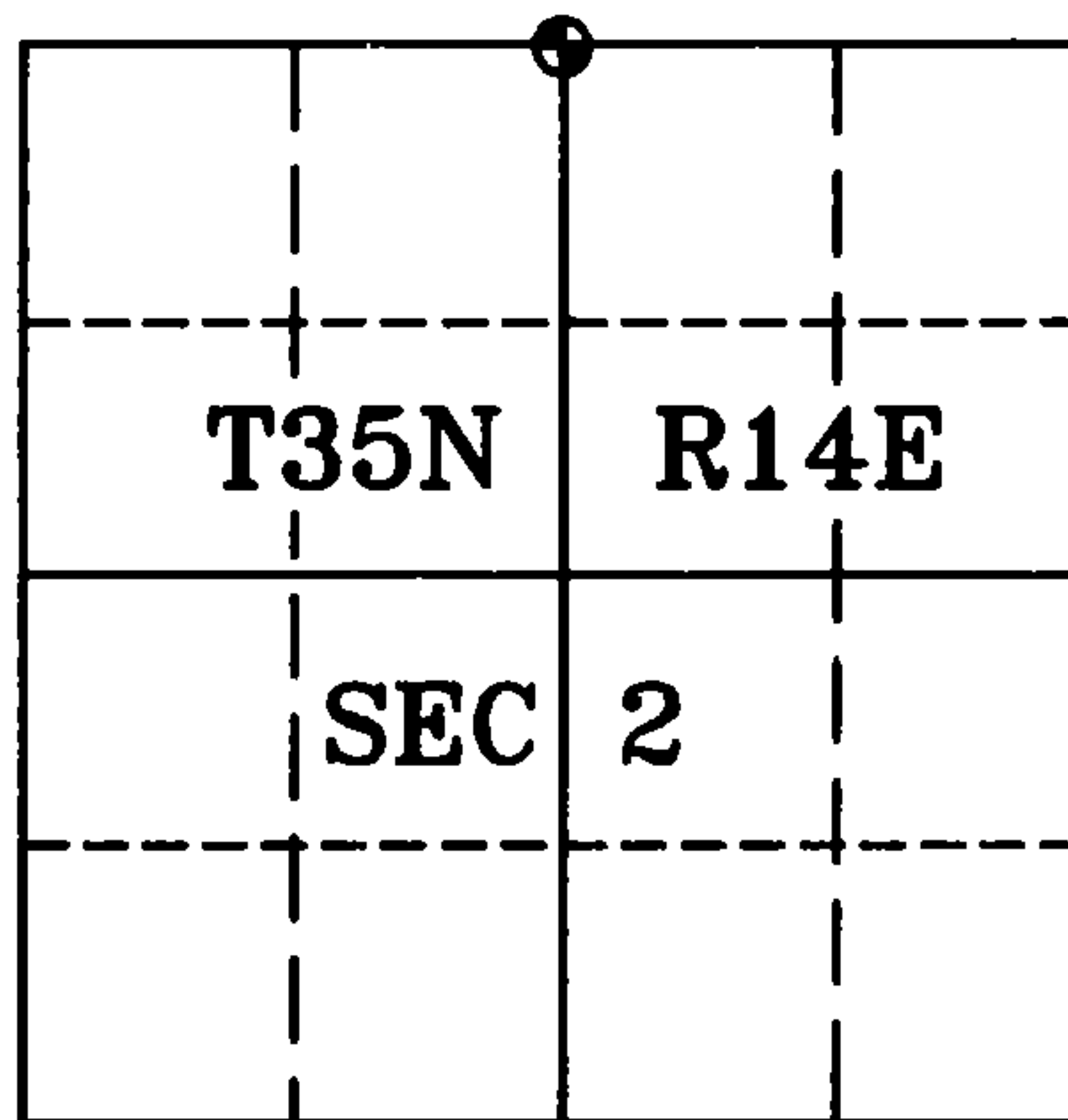
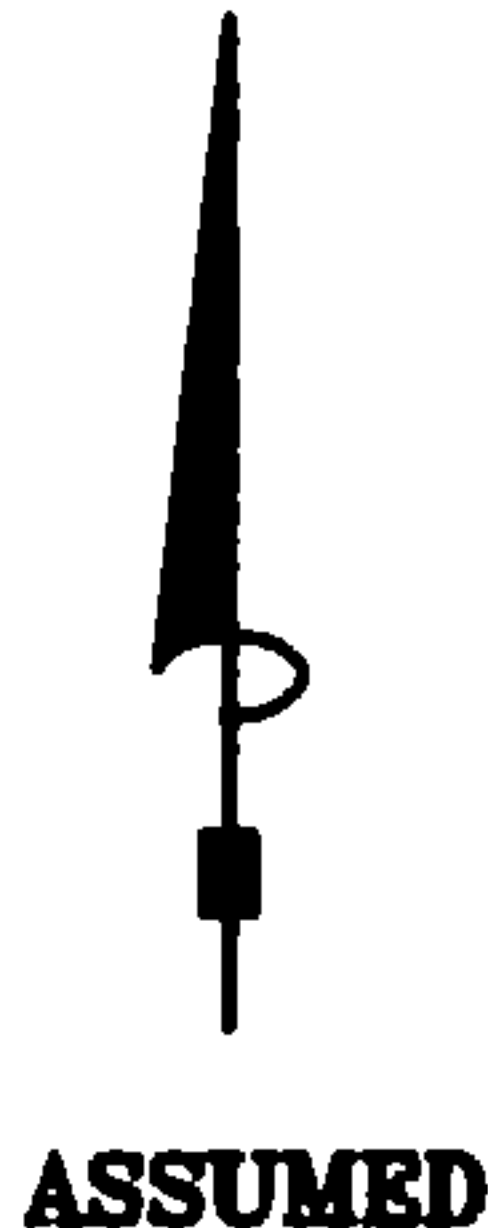
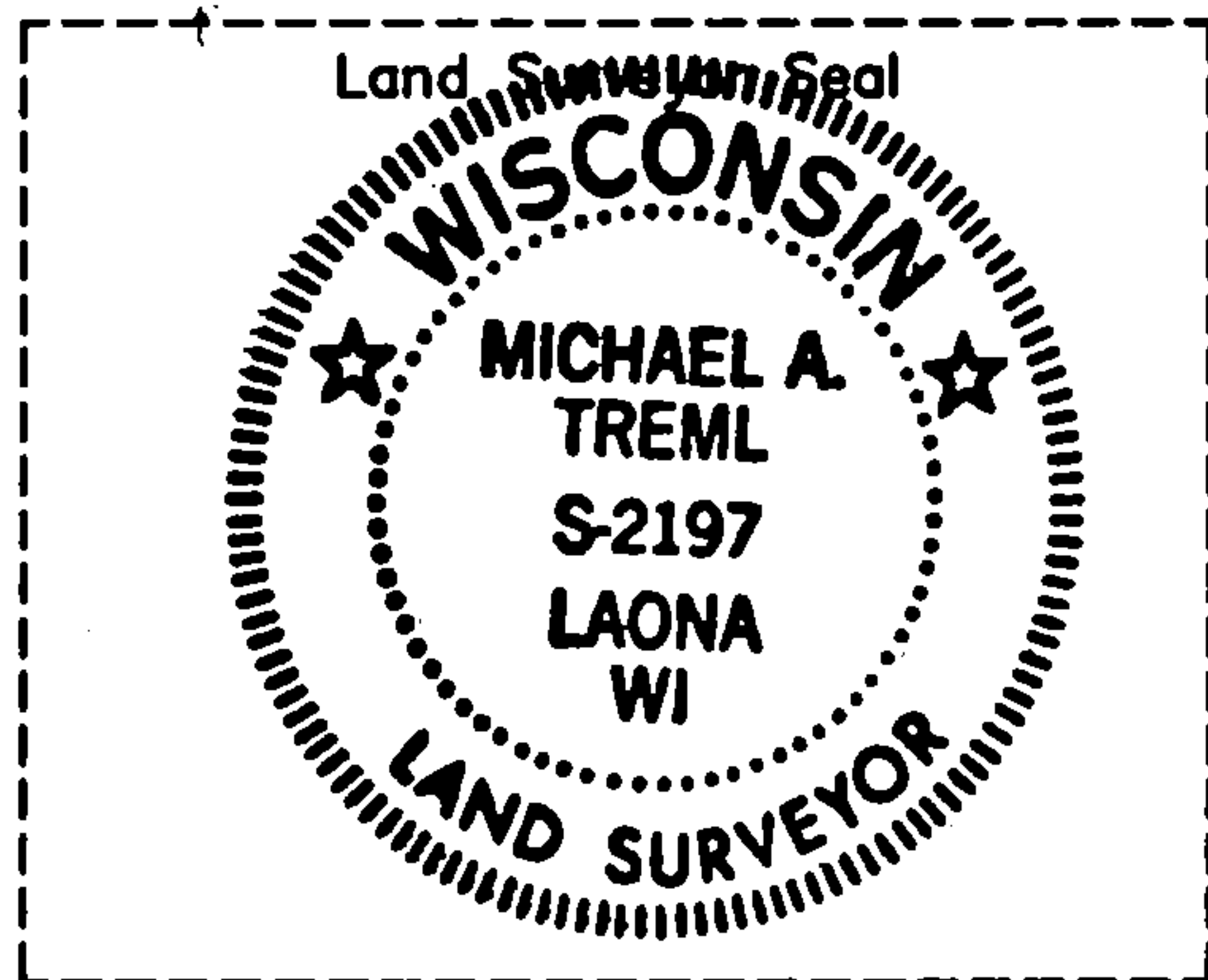
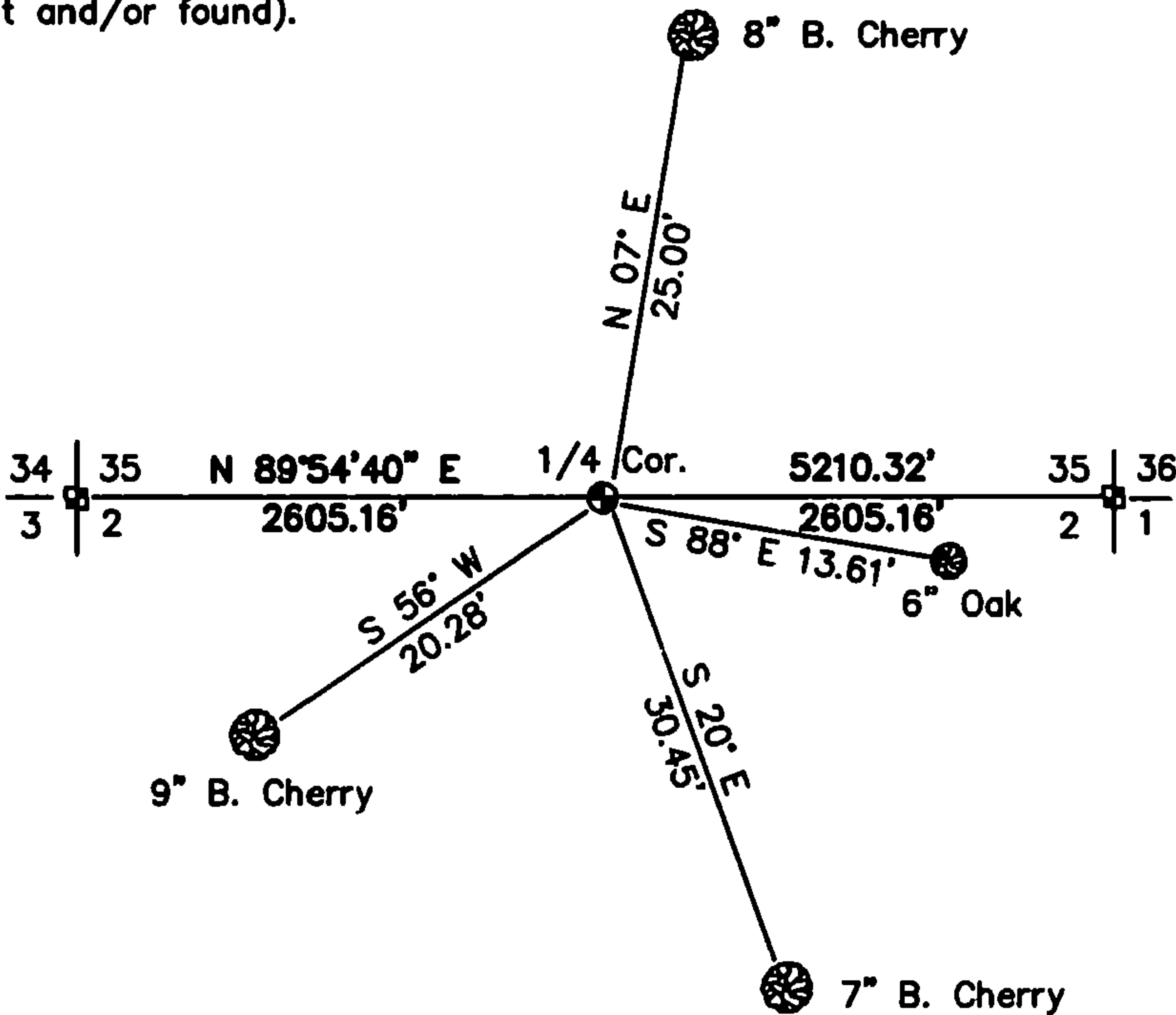
- ☐ Restored through acceptance of an obliterated evidence location.
- ☐ Restored through acceptance of a found perpetuated location.
- ☒ Considered a lost corner and reestablished through lost corner proportionate methods (include a plan view drawing showing distances and directions to other Public Land Survey Corners used for proportioning and determining the corner location).
- ☐ Restored or reestablished in a location that differs from a previous restoration or reestablishment (include a plan view drawing and indicate what was set and/or found).

Describe the monument and accessories used to perpetuate the location of this corner (include a plan view drawing and indicate what was set and/or found).

### LEGEND:

- ⊙ Set Forest County Aluminum Monument
- ⊠ Existing Recorded Monument

Note: All distances are taken to nail in side of tree.



I, Michael A. Trembl, RLS  
(type or print name) certify that the corner location shown on this record was determined by me or under my direction and control and that this U.S. Public Land Survey Monument Record is correct and complete to the best of my knowledge and belief.

Michael A. Trembl 12-04-01  
Signature Date

The North One-quarter corner of  
Section 2 T. 35 N., R. 14 E.  
Forest County, WI

Index No. A-19

43614350020