

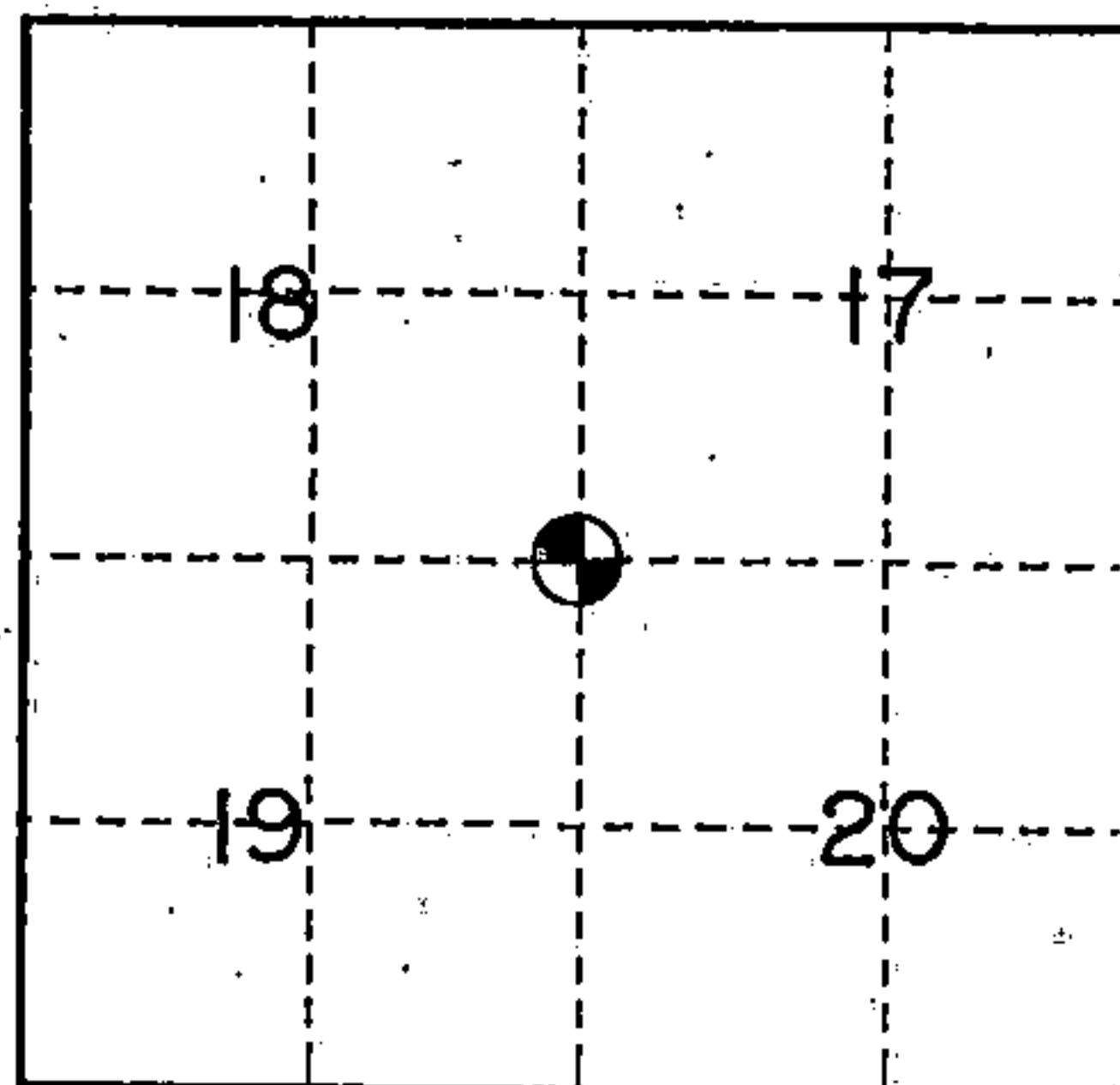
U. S. PUBLIC LAND SURVEY MONUMENT RECORD

INSTRUCTIONS:

This record shall show the location of the corner and shall include all of the following nine elements (a through i).

- (a) Identify the corner by reference to the U.S. public land survey system.
 ○ = Corner monument restored.

Section corner common to Sections 18, 17, 19
 & 20, T36N, R15E, 4th P.M., Forest County, WI



- (b) Describe any record evidence, monument evidence, occupational evidence, testimonial evidence or any other material evidence you considered, and whether the monument was found or placed.

Original survey by James McBride, Deputy Surveyor, in 1859.

Original Bearing Trees:

Hemlock 26" - N60°W - 25 links
 Hemlock 10" - N45°E - 29 links

Sugar 10" - S49°E - 39 links
 Sugar 8" - S75°W - 22 links

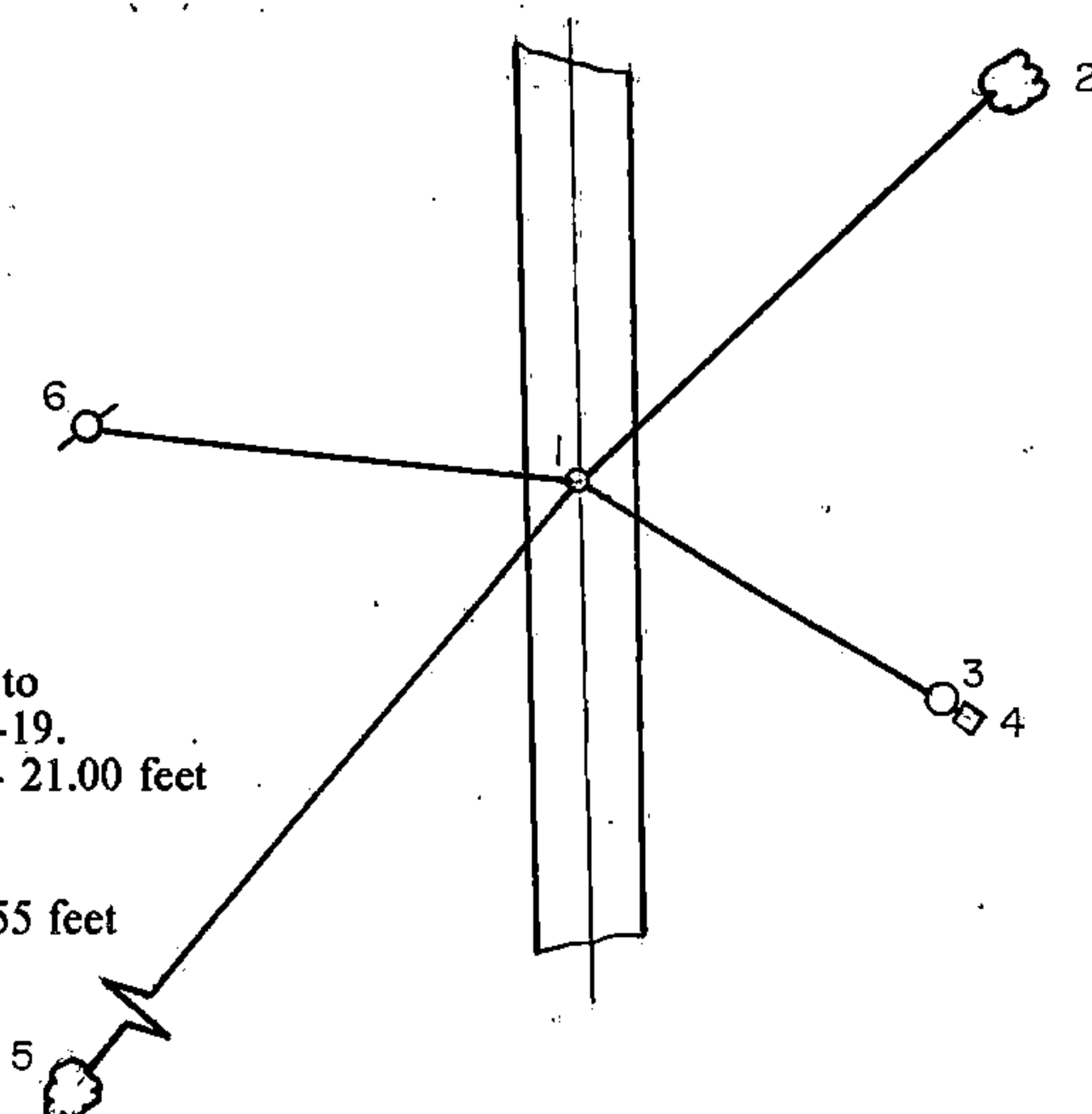
1911- Corner recovered by J.J. Melendy. Set a 7" x 2" x 16" stone in pit of small stones level with road. He also set a 2 1/2" x 2 1/2" post 50 links east and west of corner position.

1993- I could find no evidence at the corner location of Melendy's 1911 corner. I reset the corner using J.J. Melendy's notes and corners recovered at W 1/4 S-17 and NW cor. S-17. The corner falls in the centerline of an old fire tower road to the east as per the 1911 survey. Set 1" I.P. in center-line of gravel road, proportioning the east line of Section 18. I made new accessories as noted below.

- (c) In the plan view drawing below, provide reference ties to at least 4 witness monuments, or, if the location is within a municipality, to at least 2 witness monuments. (witness monuments shall be made of concrete, natural stone, iron or other equally durable material.)

- (d) Show a plan view drawing depicting the relevant monuments and reference ties which is sufficient in detail to enable accurate relocation of the corner monument if the corner monument is disturbed. Indicate north.

1. Set 1" x 30" IP (galv. with plastic cap) in center-line gravel road marking the corner location.
2. Maple 3" - N45°E - 34.86 feet
3. Reference monument 2 1/2" x 36" aluminum pipe monument stamped cap to read: T36N, R15E, S-18, S-17, S-20, S-19. Reference corner S-1685, 1993; S60°E - 21.00 feet
4. Steel sign post - S60°E - 21.50 feet
5. Maple 8" - S41°W - 76.35 feet
6. Power pole #3615-18PL - N83°W - 28.55 feet



- (e) Describe any material discrepancy between the location of the corner as restored or reestablished and the location of that corner as previously restored or reestablished by distance and direction. Show the discrepancy on the plan view drawing under (d), above. Show the distances between the corner as previously restored or reestablished and (1) the corner as restored or reestablished, and (2) to at least 2 of the witness monuments shown on the drawing in (d), above.

None

- (f) Was the corner restored through acceptance of (1) an obliterated evidence location, or, (2) found perpetuated location?

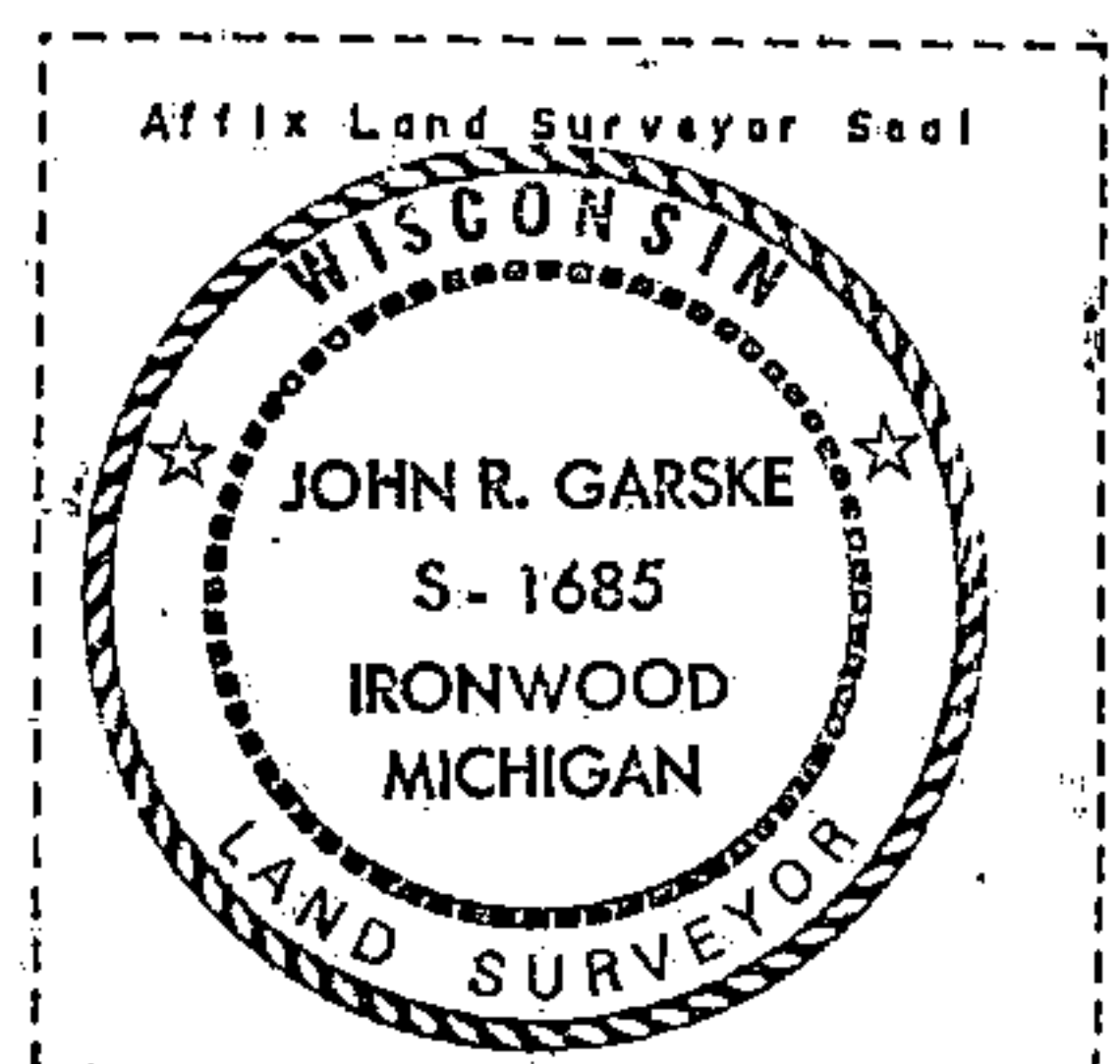
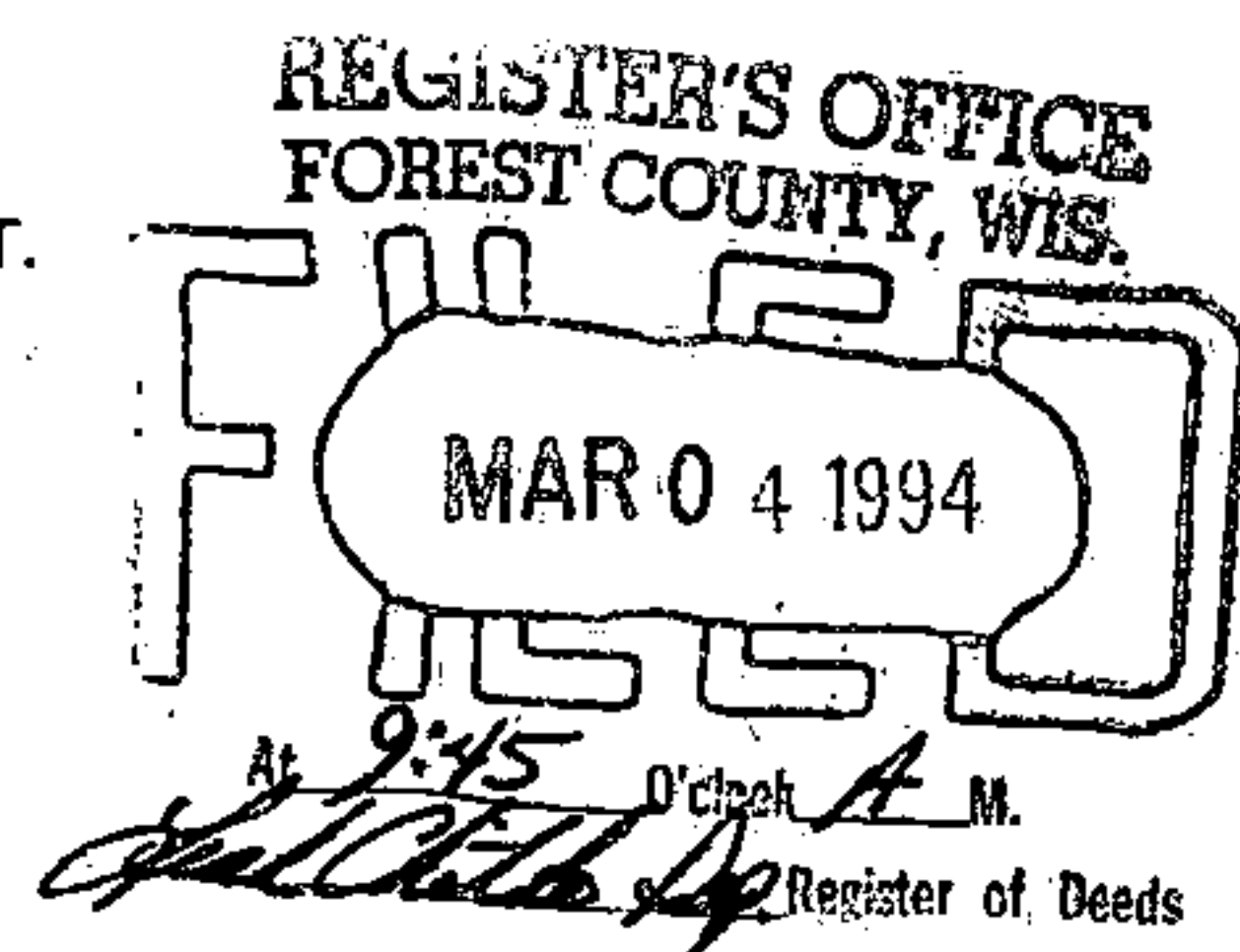
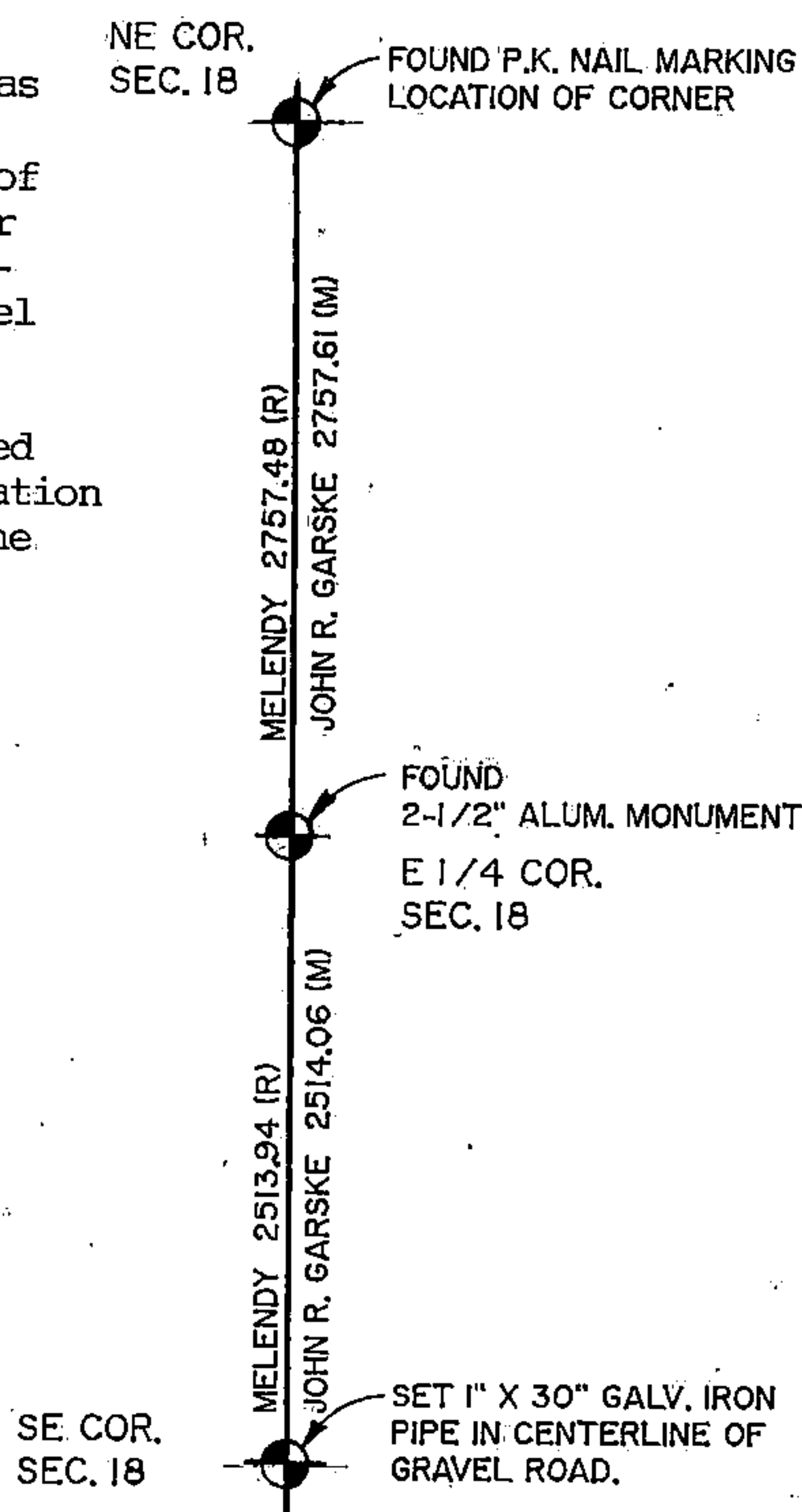
1- An obliterated evidence location

- (g & h) Was the corner reestablished through lost corner proportionate methods? If so, show the method, including the directions and distances to other public land survey corners used as evidence or used for proportioning in determining the corner location?

The difference of 0.13 was proportioned using the record Melendy distance of 2513.94 feet. The corner was placed at the center-line of North-South gravel road.

This location approximated Melendy's called out location of "Old Tower Road" to the East

(R) - Recorded
(M) - Measured



(1) I, John R. Garske, S-1685

(type or print name) certify that the corner location shown on this record was determined by me or under my direction and control and that this U.S. Public Land Survey Monument Record is correct and complete to the best of my knowledge and belief.

John R. Garske
Signature

12/13/93
Date

CERTIFICATE READY FOR FILING:

Sue Vap
District Ranger