

Document Number

177326

REGISTER'S OFFICE }
Forest County, Wis. }
Received for record this 5th day
of November A.D., 2002 at
1:35 o'clock P.M. and recorded
in Vol. Corner Restoration
page R-23
Kay Swanson, Deputy
Register of Deeds

U.S. PUBLIC LAND SURVEY MONUMENT RECORD

(As Required by WI Adm. Code)

History of original corner establishment and subsequent restorations and descriptions of any record, monument, occupational, testimonial or other evidence considered:

1859 – James McBride, set original corner post and made the following B.T.'s:

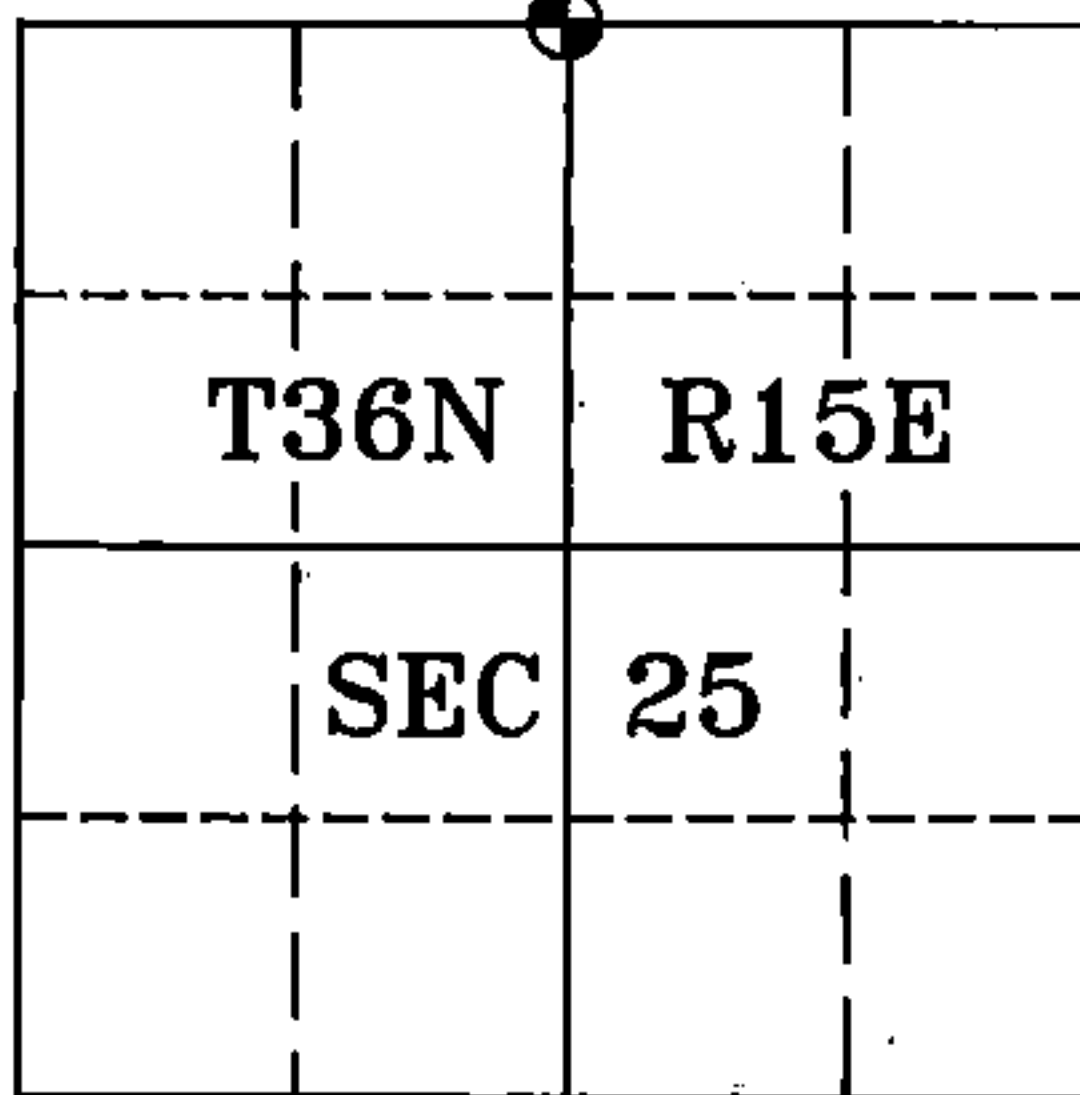
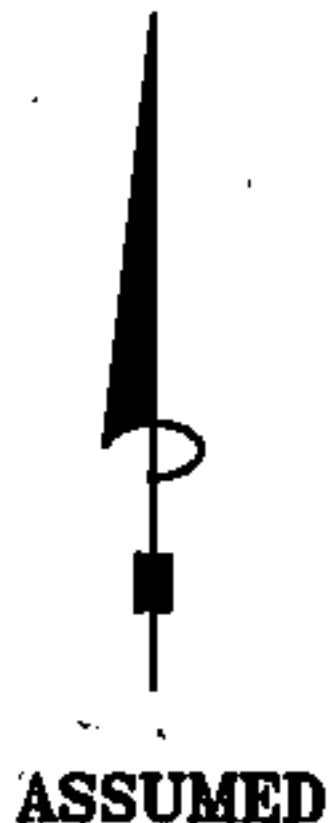
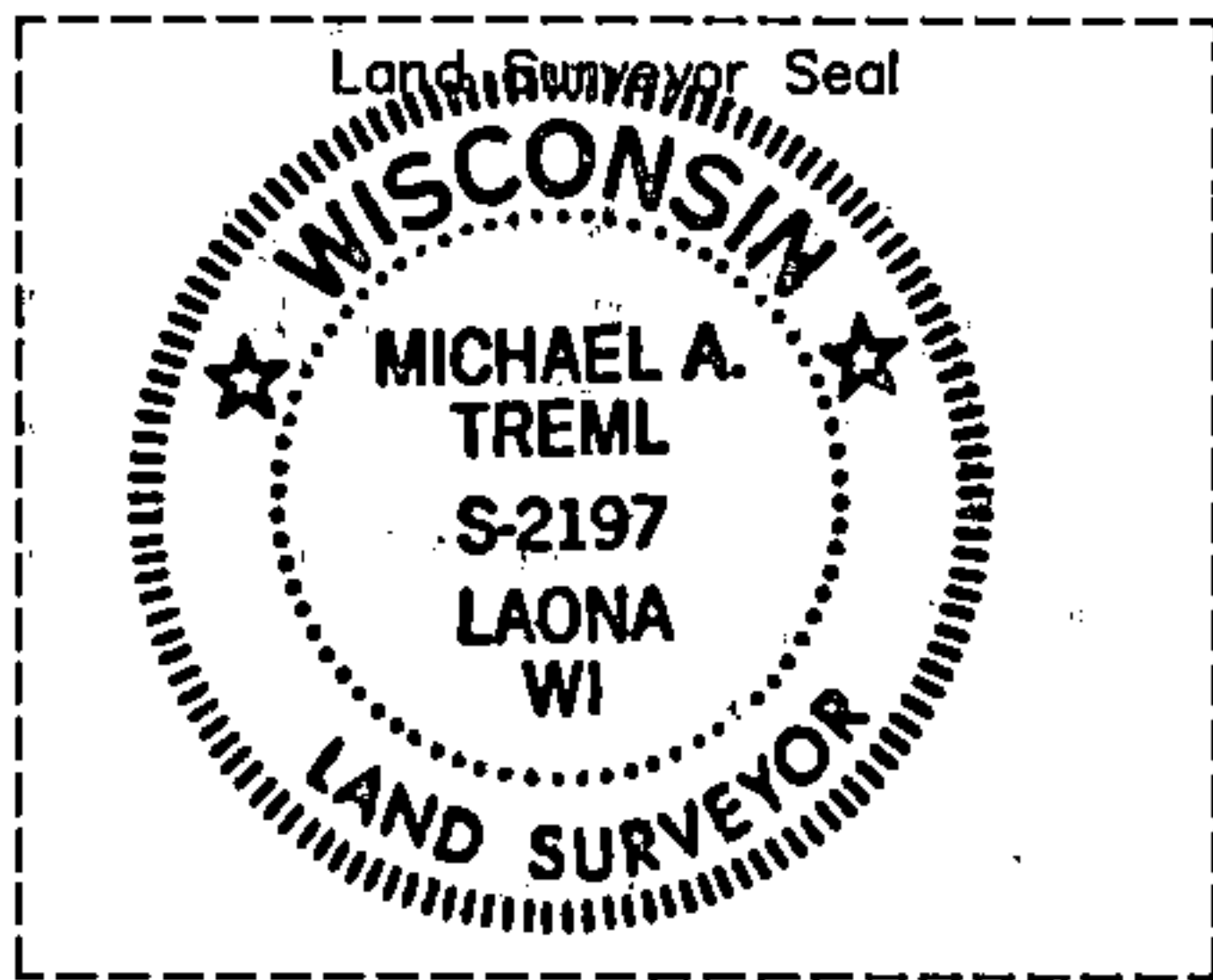
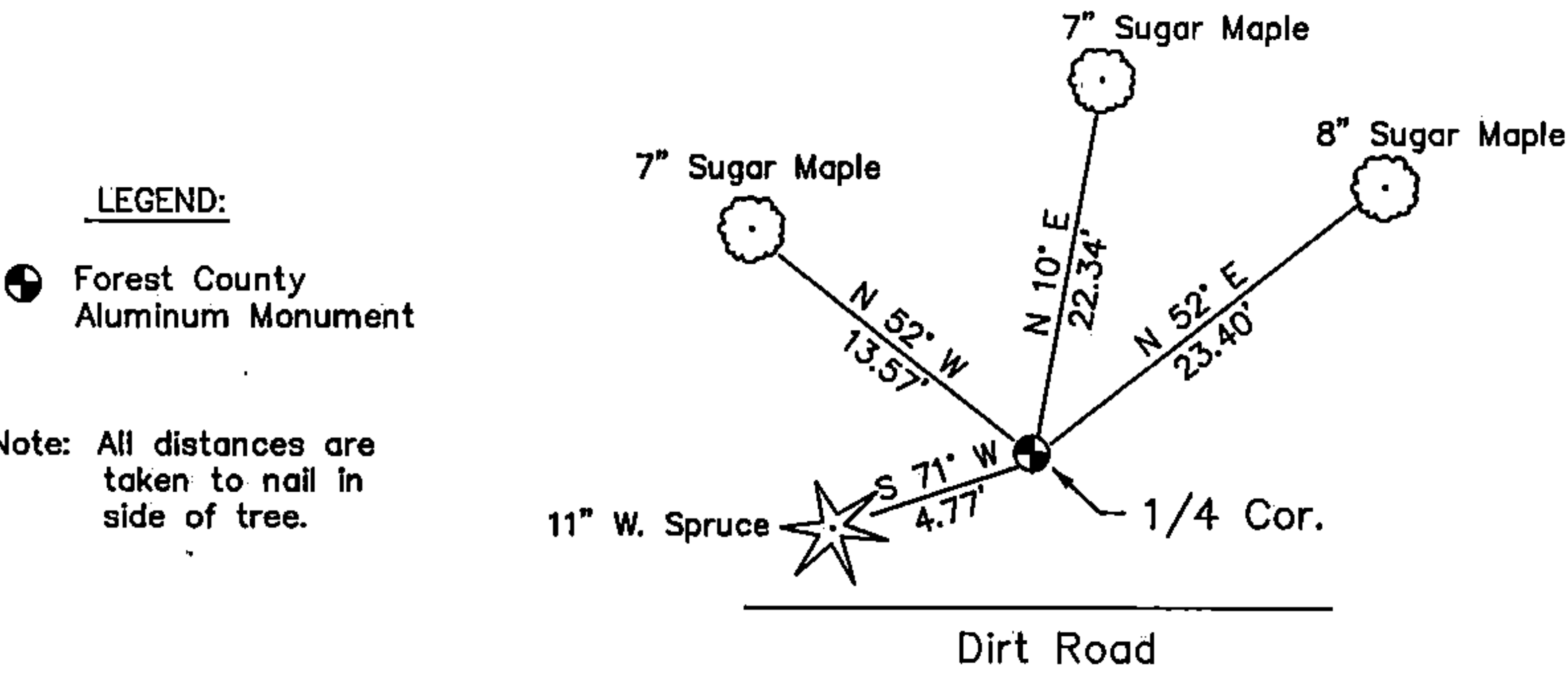
Sugar, 10", N 08° E, 9 lks., 5.94 feet.
Birch, 7", S 18° W, 12 lks., 7.92 feet.

2002 – I found no evidence of the original corner post or accessories.
I found a 1 1/2" diameter Iron Pipe North of a E-W dirt road with
lines marked N, E & W from iron pipe. I accepted the iron pipe as the best
available evidence of the corner position. I Replaced the existing iron pipe
with a 2" X 36" Forest County Aluminum Monument stamped for
the 1/4 corner.

Corner was: (Check All That Apply)

- ☐ Restored through acceptance of an obliterated evidence location.
☒ Restored through acceptance of a found perpetuated location.
☐ Considered a lost corner and reestablished through lost corner proportionate methods (include a plan view drawing showing distances and directions to other Public Land Survey Corners used for proportioning and determining the corner location).
☐ Restored or reestablished in a location that differs from a previous restoration or reestablishment (include a plan view drawing and indicate what was set and/or found).

Describe the monument and accessories used to perpetuate the location of this corner (include a plan view drawing and indicate what was set and/or found).



I, Michael A. Trembl, RLS
(type or print name) certify that the corner location shown on
this record was determined by me or under my direction and
control and that this U.S. Public Land Survey Monument Record
is correct and complete to the best of my knowledge and belief.

Michael A. Trembl 10/8/02
Signature Date

The North Quarter corner of
Section 25 T. 36 N., R. 15 E.
Forest County, WI

Index No. R-23

43615240020