

Document Number

179540

REGISTER'S OFFICE
Forest County, Wis.
Received for record this 21ST day
of May A.D., 2003 at
9:15 o'clock A.M. and recorded
in Vol. Corner Restoration
page P-23
Kay Swanson, Deputy
Register of Deeds

U.S. PUBLIC LAND SURVEY MONUMENT RECORD

(As Required by WI Adm. Code)

History of original corner establishment and subsequent restorations and descriptions of any record, monument, occupational, testimonial or other evidence considered:

Corner not set in original Government Survey.

2003 - I established the C 1/4 corner at the intersection of straight lines from the quarter section corners to the opposite quarter section corners.
Set a 1" x 30" Forest County Aluminum Monument stamped for the C 1/4 corner.

Corner was: (Check All That Apply)

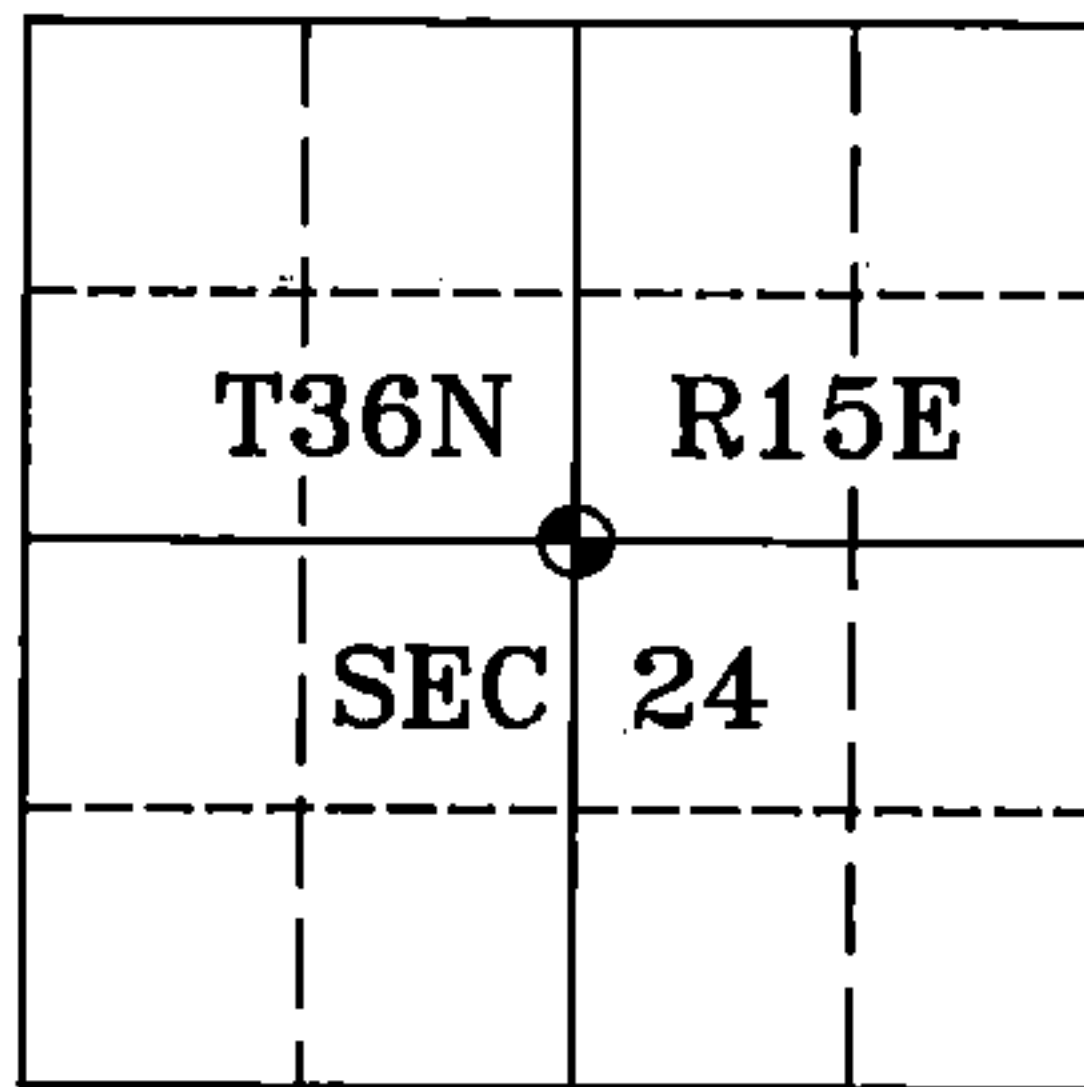
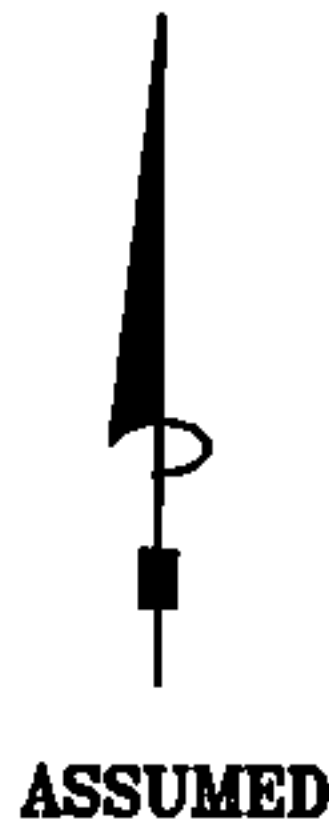
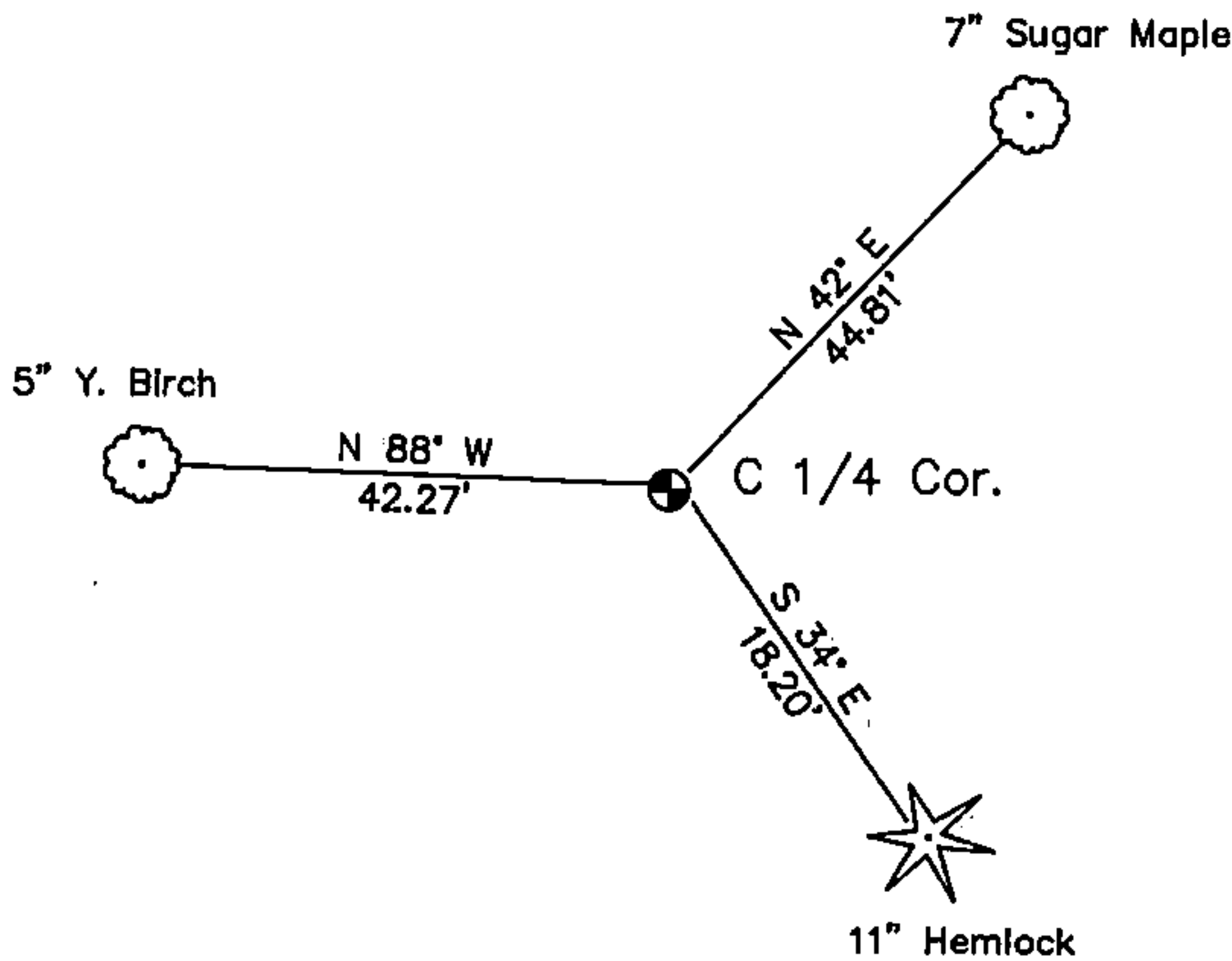
- ☐ Restored through acceptance of an obliterated evidence location.
- ☐ Restored through acceptance of a found perpetuated location.
- ☐ Considered a lost corner and reestablished through lost corner proportionate methods (include a plan view drawing showing distances and directions to other Public Land Survey Corners used for proportioning and determining the corner location).
- ☐ Restored or reestablished in a location that differs from a previous restoration or reestablishment (include a plan view drawing and indicate what was set and/or found).

Describe the monument and accessories used to perpetuate the location of this corner (include a plan view drawing and indicate what was set and/or found).

LEGEND:

-  Set Forest County Aluminum Monument

Note: All distances are taken to nail in side of tree.



I, Michael A. Tremi, RLS
(type or print name) certify that the corner location shown on this record was determined by me or under my direction and control and that this U.S. Public Land Survey Monument Record is correct and complete to the best of my knowledge and belief.

Michael A. Tremi 5/4/03
Signature Date

The Center 1/4 corner of
Section 24 T. 36 N., R. 15 E.
Forest County, WI

Index No. P-23

43615242020

P-23