

Document Number
195026

REGISTER'S OFFICE
Forest County, Wis. {
Received for record this 6th day
of August A.D., 2007 at
2:35 o'clock P.M. and recorded
in Vol. Corner Restoration
page T-5
Kay Swanson, Deputy
Register of Deeds

U.S. PUBLIC LAND SURVEY MONUMENT RECORD

(As Required by WI Adm. Code)

History of original corner establishment and subsequent restorations and descriptions of any record, monument, occupational, testimonial or other evidence considered:

1859 - James McBride, set quarter corner section post and made the following B.T.'s:

Sugar, 11", S 42° W, 16 lks., 10.56 feet.
Sugar, 12", S 41° E, 17 lks., 11.22 feet.

2007 - I found no evidence of the original corner or accessories.
I found a 1 1/2" Iron Pipe marking 1/4 corner and replaced it with a 2" x 30" Forest
County Aluminum Pipe Monument.

Corner was: (Check All That Apply)

- ☐ Restored through acceptance of an obliterated evidence location.
☒ Restored through acceptance of a found perpetuated location.
☐ Considered a lost corner and reestablished through lost corner proportionate methods (include a plan view drawing showing distances and directions to other Public Land Survey Corners used for proportioning and determining the corner location).
☐ Restored or reestablished in a location that differs from a previous restoration or reestablishment (include a plan view drawing and indicate what was set and/or found).

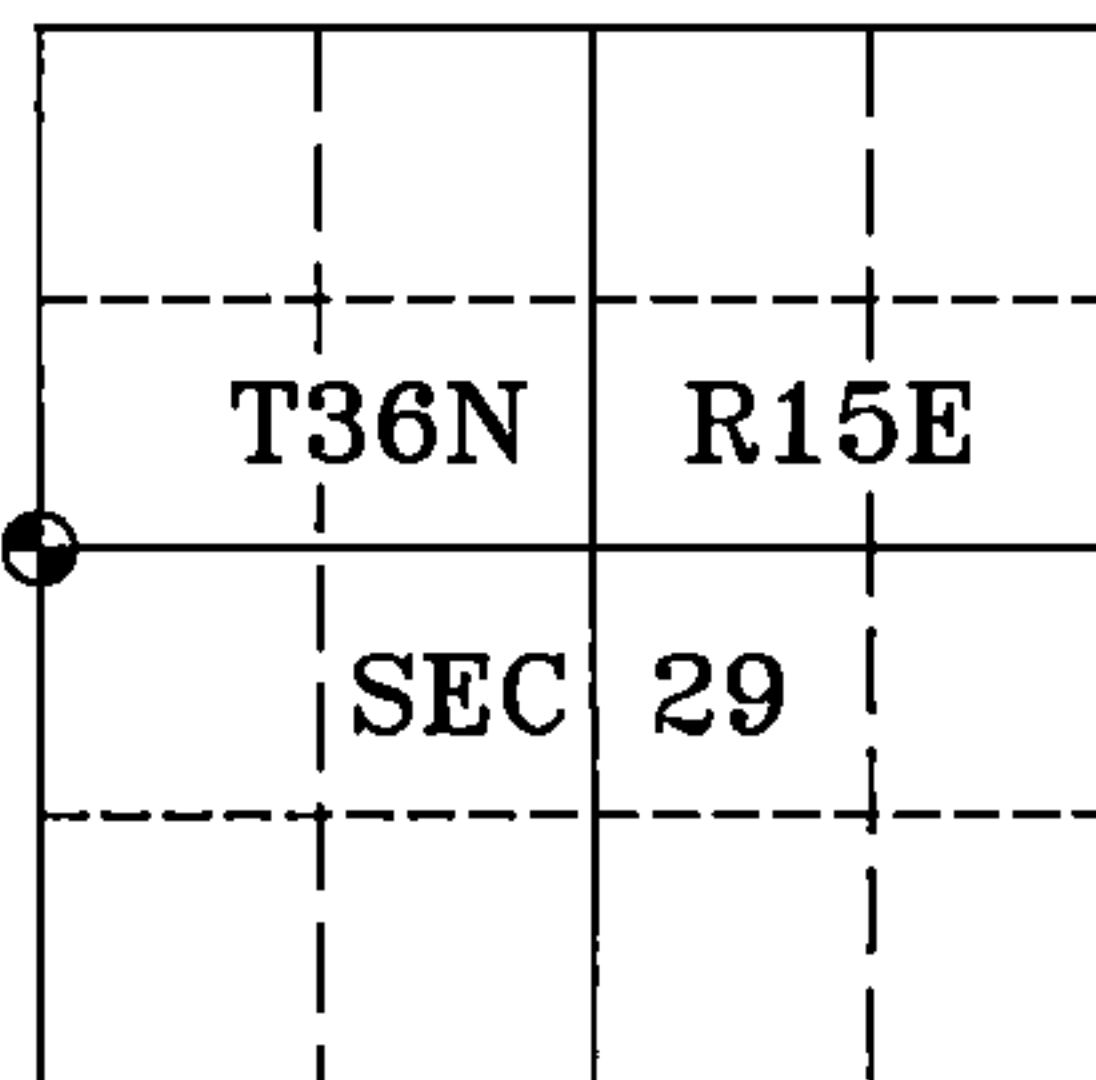
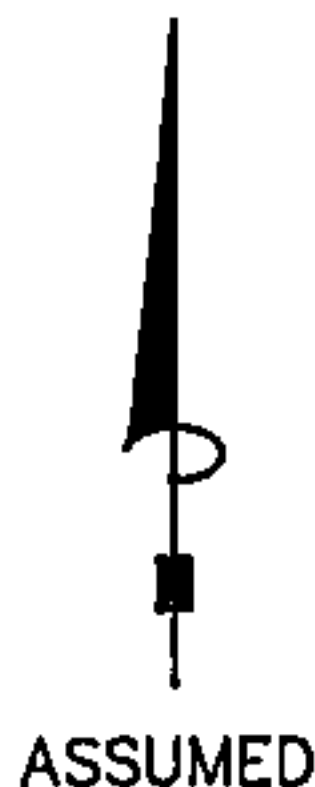
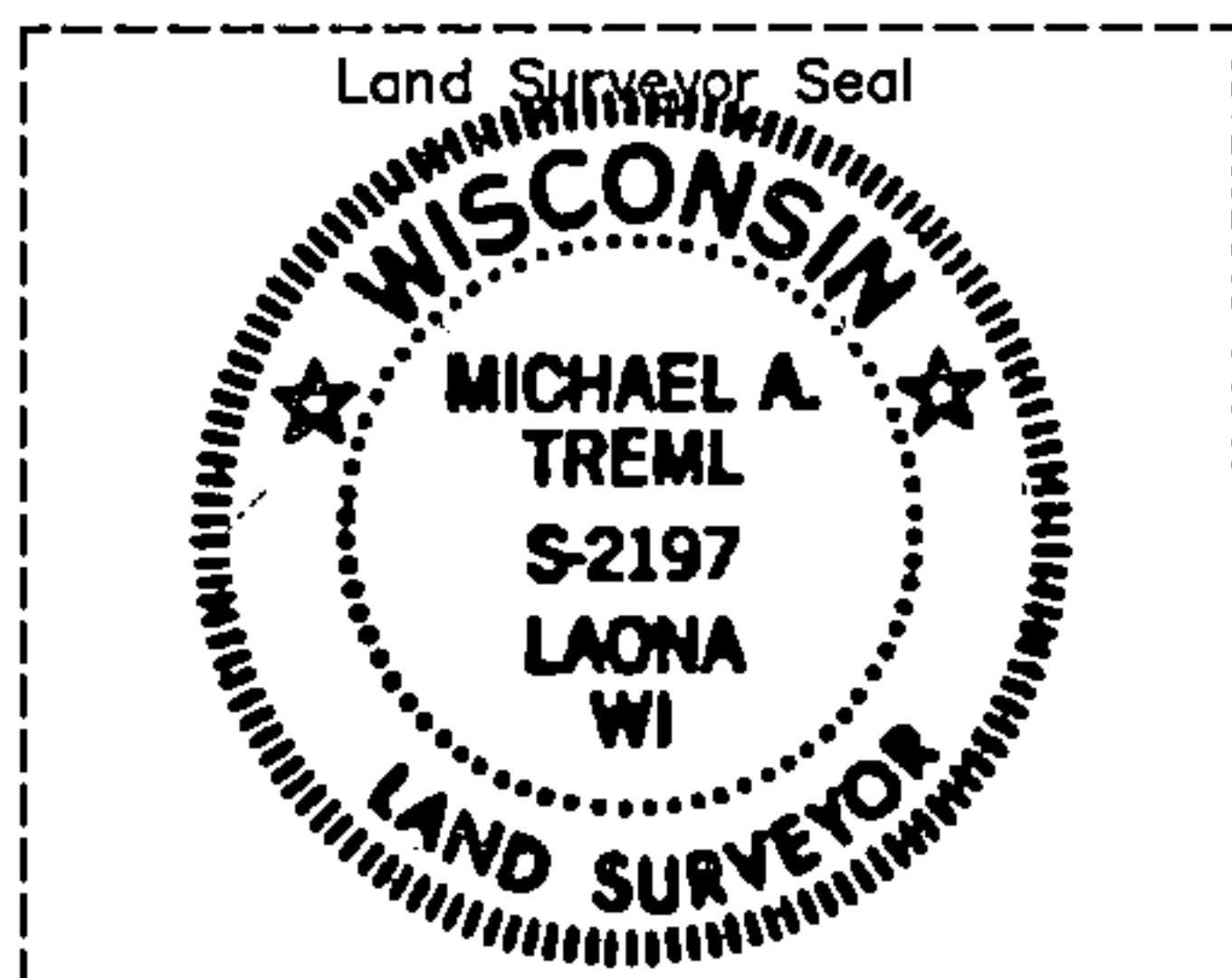
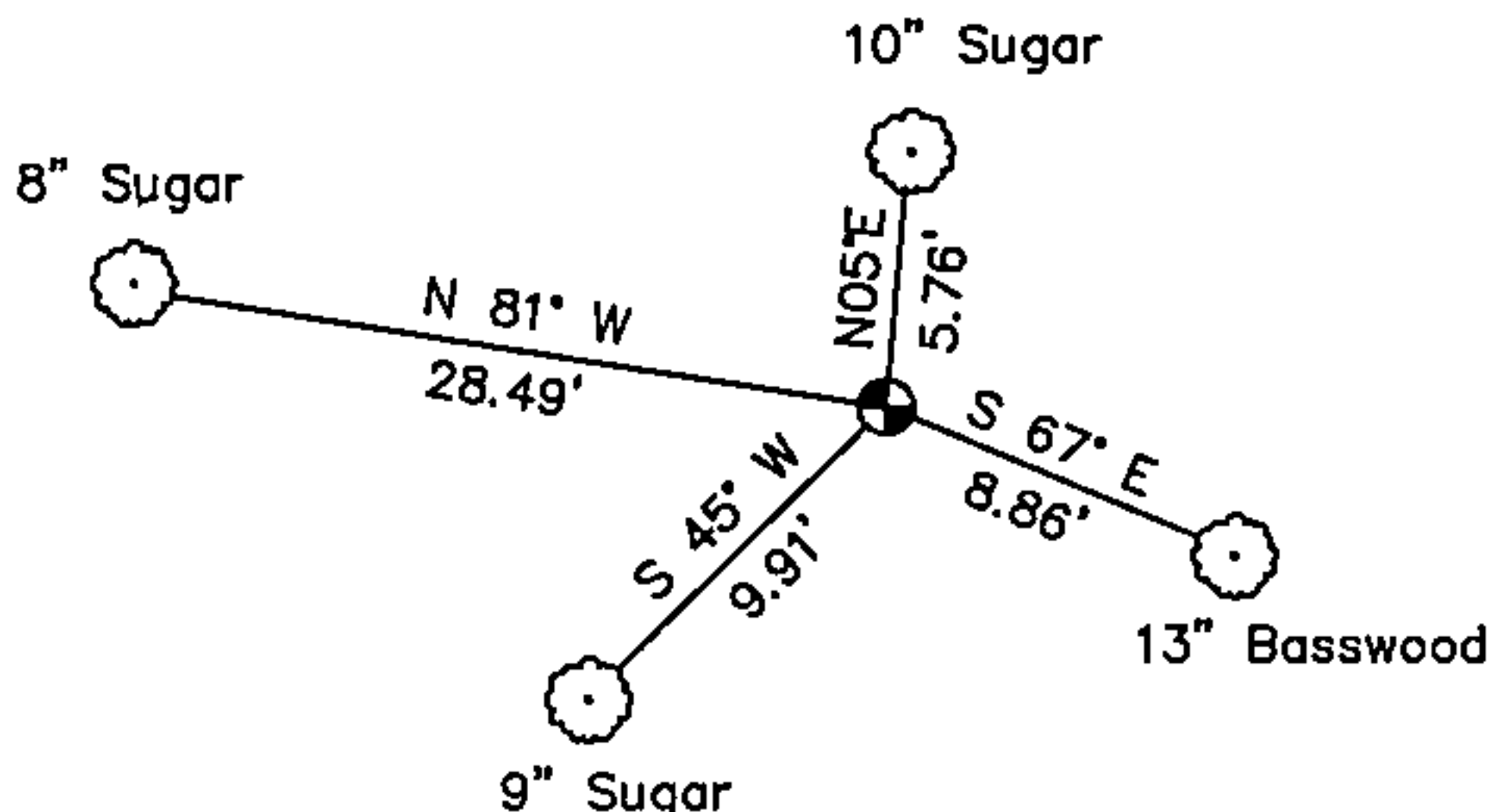
Describe the monument and accessories used to perpetuate the location of this corner (include a plan view drawing and indicate what was set and/or found).

LEGEND:

Sketch Not To Scale

- 2" x 30" Forest County Aluminum
Pipe Monument Set

Note: All distances are
taken to nail in
side of tree.



I, Michael A. Trembl, RLS
(type or print name) certify that the corner location shown on
this record was determined by me or under my direction and
control and that this U.S. Public Land Survey Monument Record
is correct and complete to the best of my knowledge and belief.

Michael A. Trembl 7/10/07
Signature Date

The West Quarter corner of
Section 29 T. 36 N., R. 15 E.
Forest County, WI

Index No. T-5
2007

4361530 2000

T-5