

U. S. PUBLIC LAND SURVEY MONUMENT RECORD

INSTRUCTIONS:

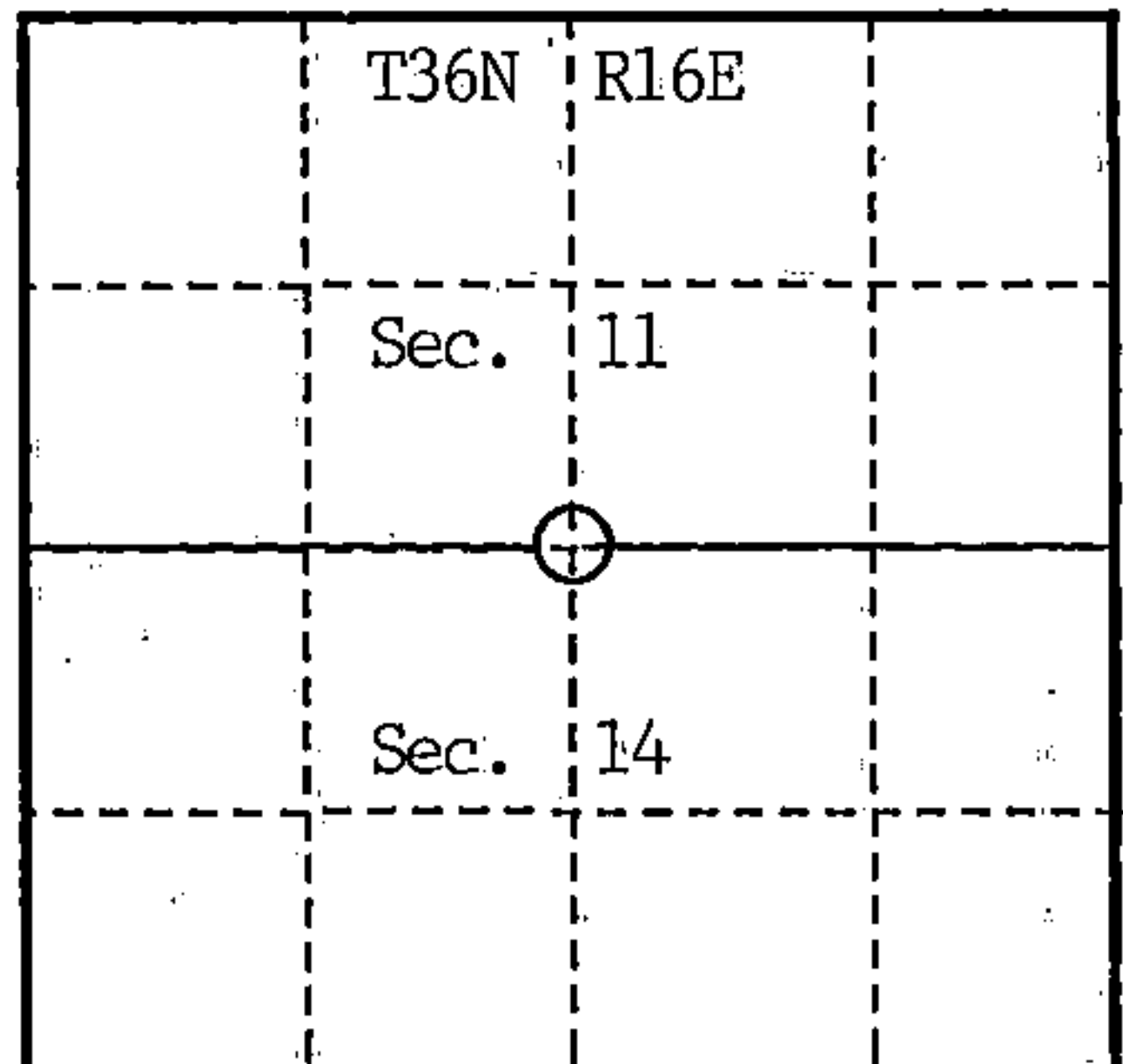
This record shall show the location of the corner and shall include all of the following nine elements (a through i).

- (a) Identify the corner by reference to the U.S. public land survey system.  
○ = Corner monument restored.

Quarter Corner Common to Sections 11 and 14,  
T36N-R16E

Index Number J-19 (T36N-R16E)

Forest County, Wisconsin



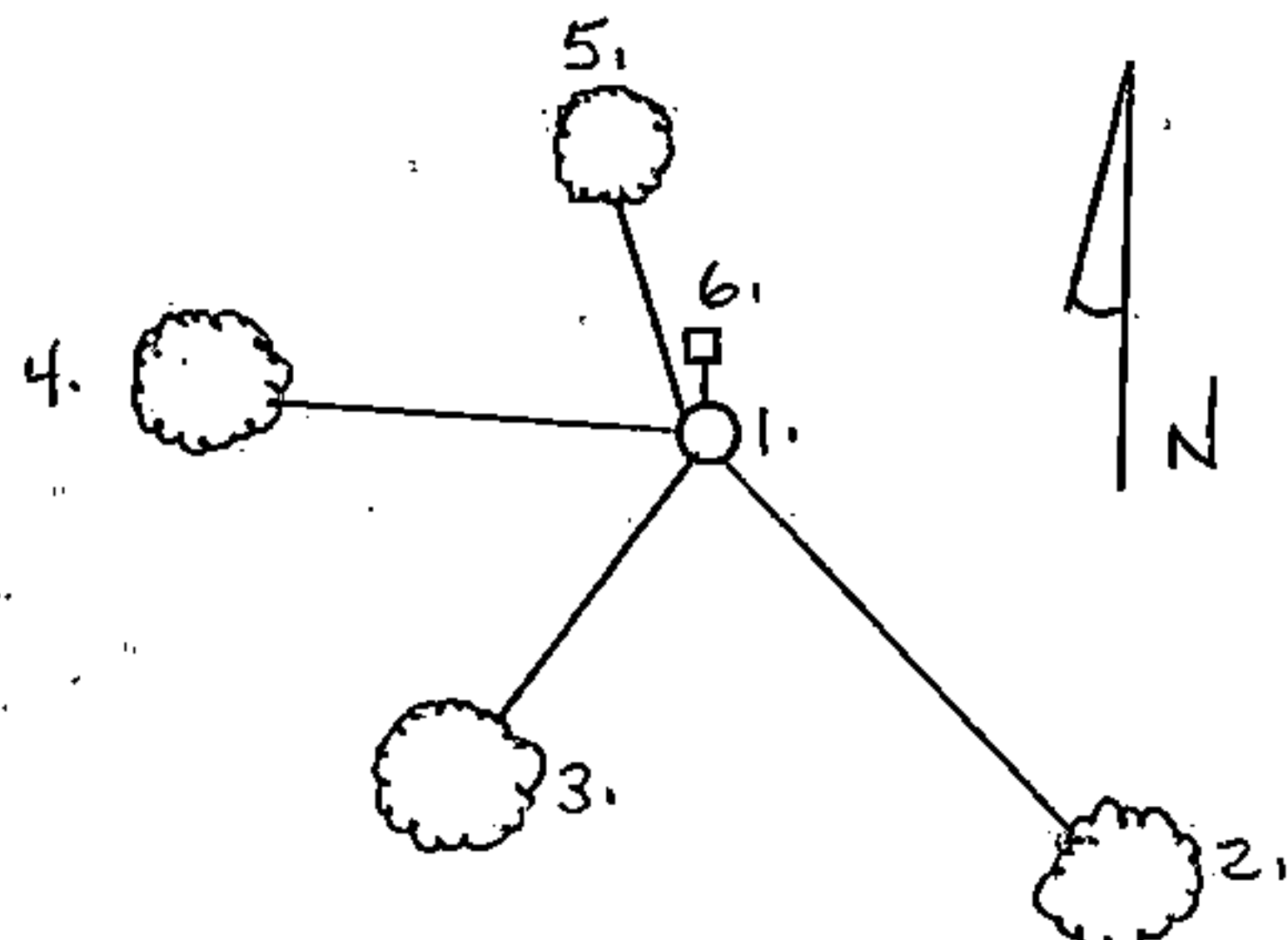
- (b) Describe any record evidence, monument evidence, occupational evidence, testimonial evidence or any other material evidence you considered, and whether the monument was found or placed.

- 1858 - Original post set by James McBride, witnessed by 20 W.Birch North 20 lks.;  
16 Hemlock S24E 10 lks.
- 1928 - Records of Goodman Lumber Company note burned post laying on ground. No mention of OBT recovery or restoration of corner.
- 1991 - Coleman Engineering Company established traverse survey between SW and SE  
July corners of Section 11 to locate midpoint search area; measured mile is 59.2 feet longer than record 80.00 chains. Very few signs of any stump remains within 100' of this location. Approximate field corner (South and East edges of spruce tree cover bears S24°E approximately 83 feet from calculated corner position. No other evidence of lines or occupations is apparent. Corner was assumed to be lost and was restored by the proportionate method.

- (c) In the plan view drawing below, provide reference ties to at least 4 witness monuments, or, if the location is within a municipality, to at least 2 witness monuments. (witness monuments shall be made of concrete, natural stone, iron or other equally durable material.)

- (d) Show a plan view drawing depicting the relevant monuments and reference ties which is sufficient in detail to enable accurate relocation of the corner monument if the corner monument is disturbed. Indicate north.

1. 2½" x 36" Aluminum monument with position stamped on cap.
2. Basswood 10" S41°E 17.54 feet.
3. Sugar 8" S31°W 12.10 feet.
4. Sugar 10" N89°W 18.50 feet.
5. Ash 12" N06°W 9.62 feet.
6. Steel sign post North 1.35 feet.



REGISTER'S OFFICE  
Forest County, Wis.

Received for record this 8th day  
of October, A.D., 1991 at  
2:00 o'clock P.M. and recorded  
in Vol. Corner Restorations  
page J-19

Register of Deeds

43616110020

J-19

61-19

- (e) Describe any material discrepancy between the location of the corner as restored or reestablished and the location of that corner as previously restored or reestablished by distance and direction. Show the discrepancy on the plan view drawing under (d), above. Show the distances between the corner as previously restored or reestablished and (1) the corner as restored or reestablished, and (2) to at least 2 of the witness monuments shown on the drawing in (d), above.

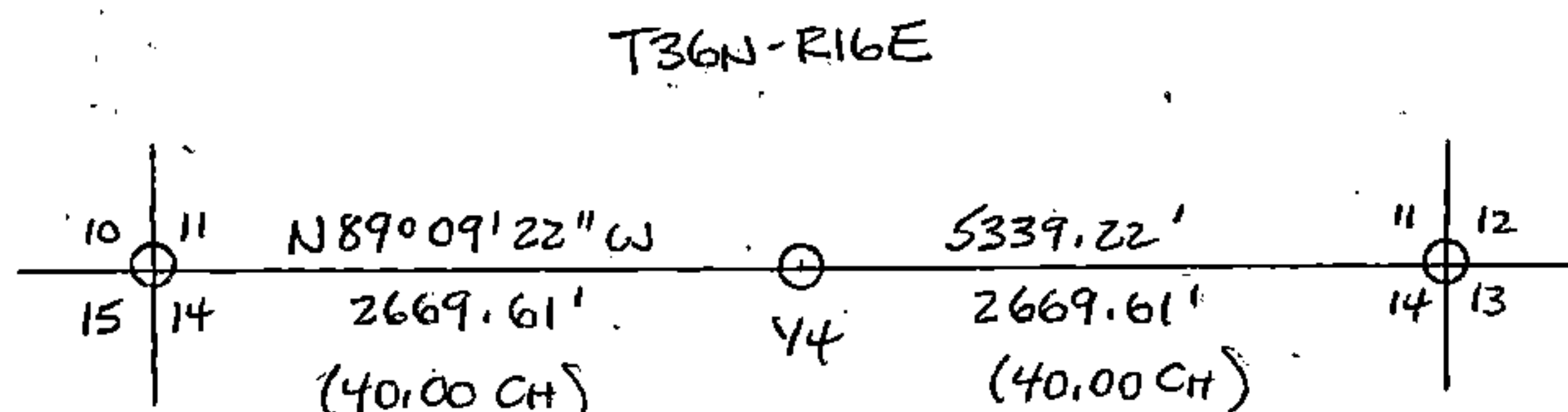
No evidence of prior corner recovery or restoration.

- (f) Was the corner restored through acceptance of (1) an obliterated evidence location, or, (2) a found perpetuated location?

Neither.

- (g & h) Was the corner reestablished through lost corner proportionate methods? If so, show the method, including the directions and distances to other public land survey corners used as evidence or used for proportioning in determining the corner location?

Corner was restored at the midpoint of a straight line between the Southwest and Southeast corners of Section 11, T36N-R16E.



Charles F. Clark, RLS 1767  
COLEMAN ENGINEERING COMPANY

- (1) I, Charles F. Clark  
(type or print name) certify that the corner location shown on this record was determined by me or under my direction and control and that this U.S. Public Land Survey Monument Record is correct and complete to the best of my knowledge and belief.



Signature

August 22, 1991

Date

CERTIFICATE READY FOR FILING:

Darrell E. Richards  
Acting District Ranger