

DOCUMENT NUMBER 133449

U. S. PUBLIC LAND SURVEY MONUMENT RECORD

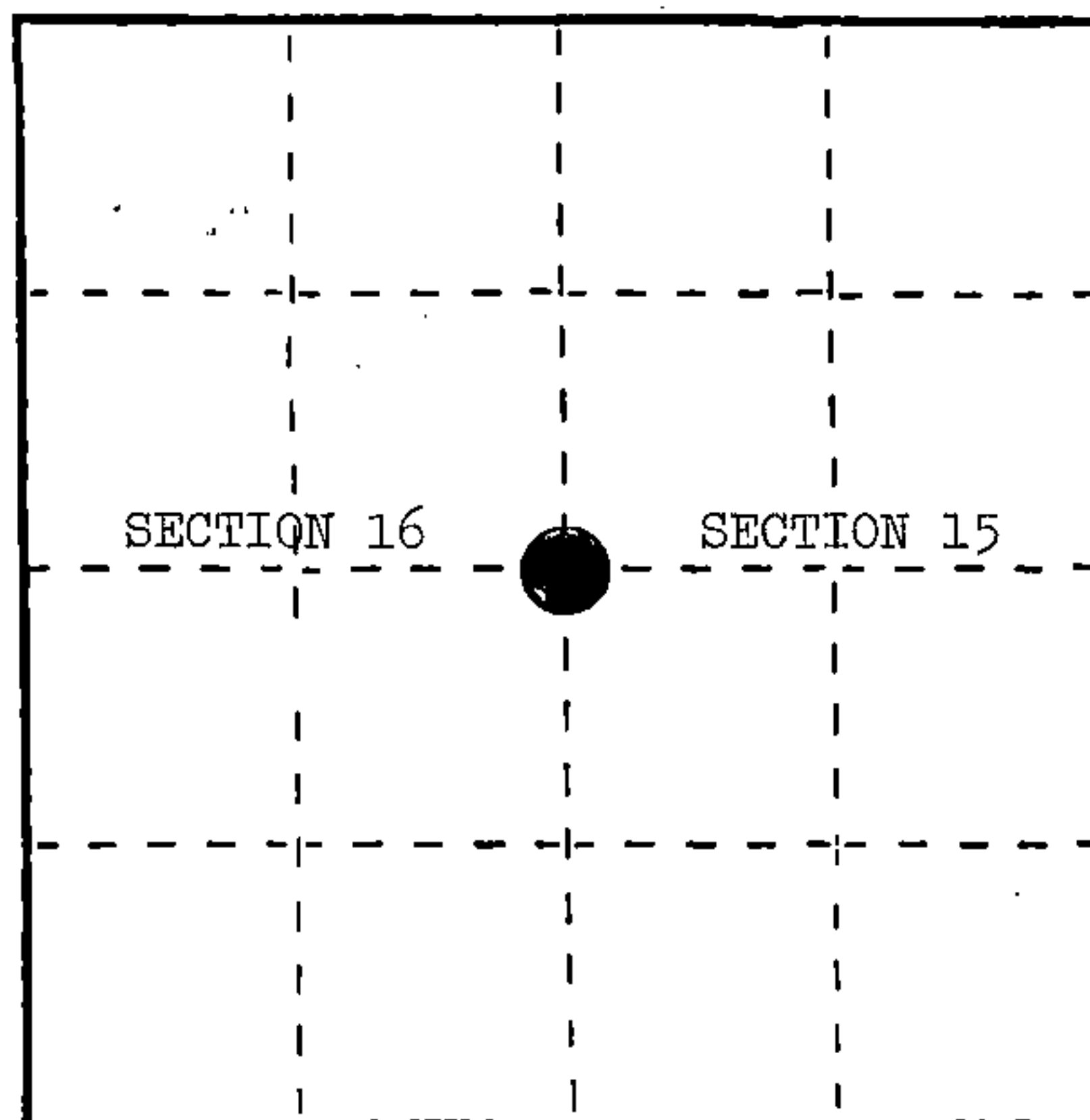
INSTRUCTIONS: This record shall show the location of the corner and shall include all of the following nine elements (a through i).

- (a) Identify the corner by reference to the U.S. public land survey system.

○ = Corner monument restored.

Quarter Corner to Sections 15 and 16, T.36N., R.16E., Forest County, Wisconsin.

REGISTER'S OFFICE
Forest County, Wis.
Received for record this 10th day
of August A.D. 1987 at
8:25 o'clock A.M. and recorded
in Vol. CORNER RESTORATIONS
page L-13
Paul Aschenbrenner
Register of Deeds



- (b) Describe any record evidence, monument evidence, occupational evidence, testimonial evidence or any other material evidence you considered, and whether the monument was found or placed.

In 1858, James McBride set wood post with the following BTs: Fir, 8", S.80°E., 22 links; Tamarack, 10", N.37°W., 28 links.

In 1928, Goodman Company set 2½" Cedar post and flue pipe 5 feet high. They found original Tamarack (dead stub), N.37°W., 18.48 feet.

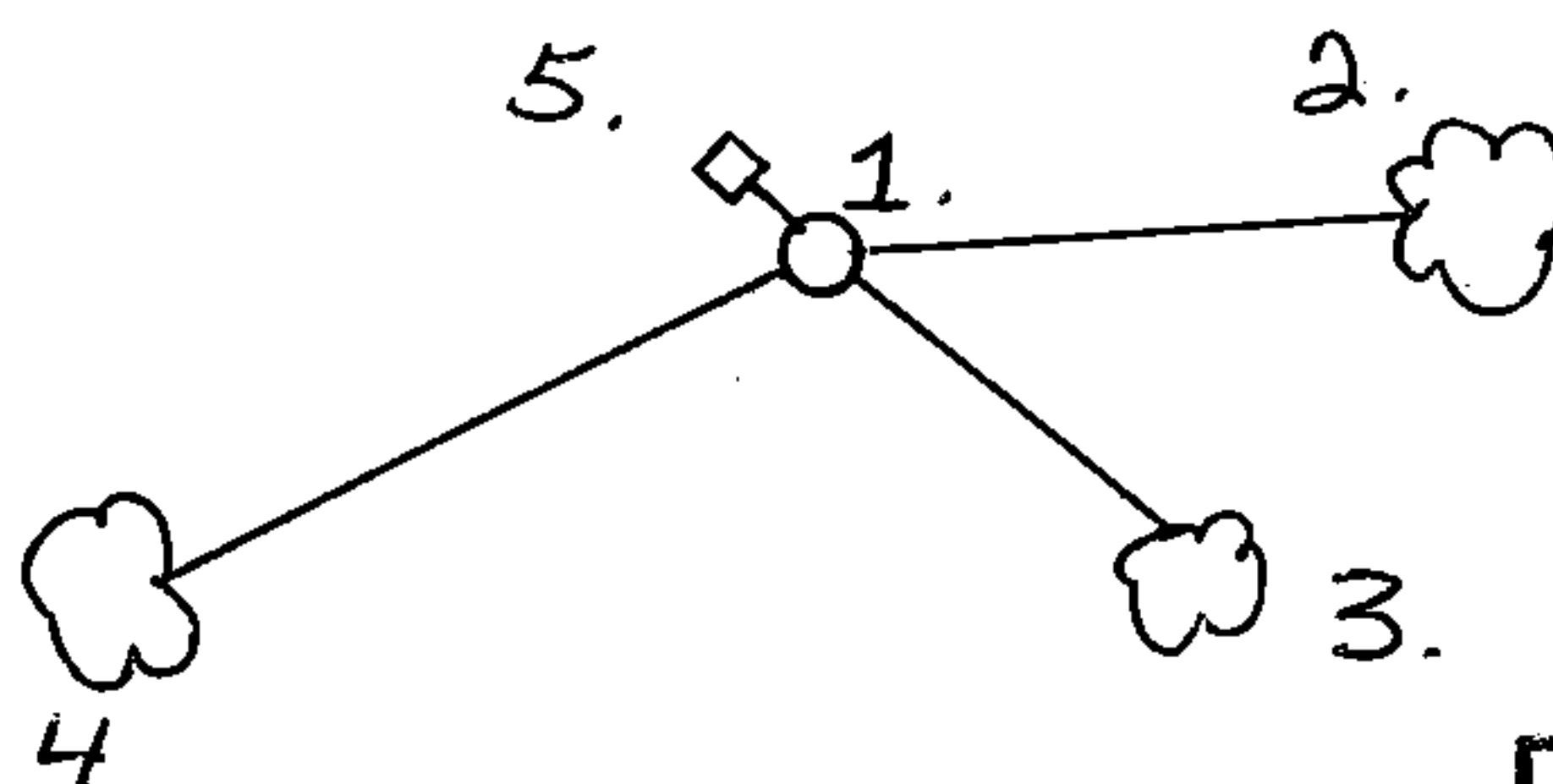
In 1934, Laird and White "874" found wood stake and iron pipe. Put a location tag on an 8" Maple 9 chains south of corner.

In 1987, Alan Harrison found iron pipe and post hole. Pulled N.37°W., 18.5 feet and found original Tamarack stump and 2 local Cedar BTs.

- (c) In the plan view drawing below, provide reference ties to at least 4 witness monuments, or, if the location is within a municipality, to at least 2 witness monuments. (Witness monuments shall be made of concrete, natural stone, iron or other equally durable material.)
Describe witness monuments.

- (d) Show a plan view drawing depicting the relevant monuments and reference ties which is sufficient in detail to enable accurate relocation of the corner monument if the corner monument is disturbed. Indicate north.

1. A 2½" x 36" aluminum monument stamped to identify the corner, in a mound of stone.
2. Cedar, 12", N.86°E., 23.93 feet.
3. Cedar, 12", S.54°E., 17.22 feet.
4. Spruce, 8", S.60°W., 30.17 feet.
5. Steel Sign Post, 6', Northwest, 0.71 feet.



(e) Describe any material discrepancy between the location of the corner as restored or reestablished and the location of that corner as previously restored or reestablished by distance and direction. Show the discrepancy on the plan view drawing under (d), above. Show the distances between the corner as previously restored or reestablished and (1) the corner as restored or reestablished, and (2) to at least 2 of the witness monuments shown on the drawing in (d), above.

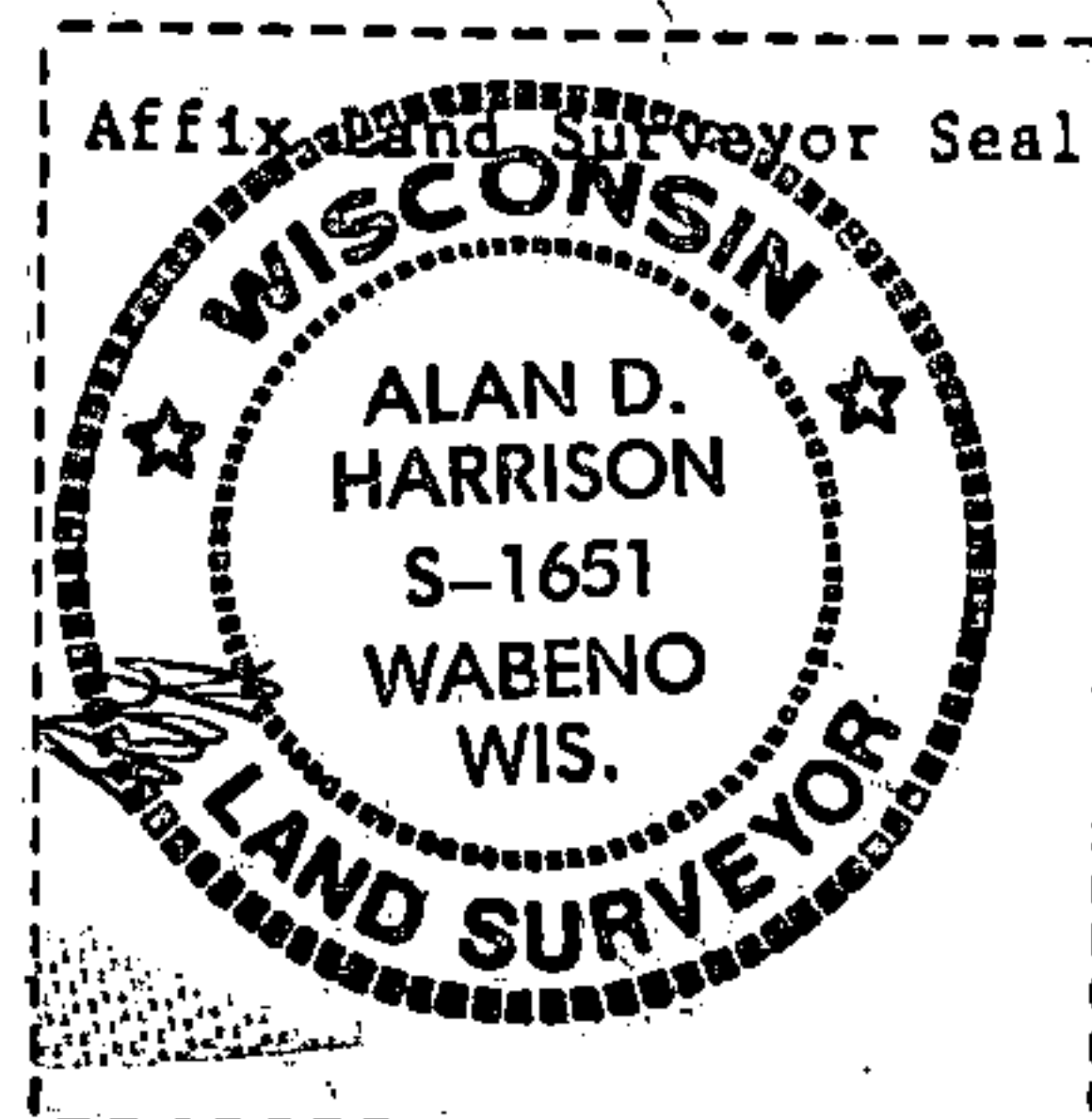
None.

(f) Was the corner restored through acceptance of (1) an obliterated evidence location, or, (2) a found perpetuated location?

(2) a found perpetuated location.

(g&h) Was the corner reestablished through lost corner proportionate methods? If so, show the method, including the directions and distances to other public land survey corners used as evidence or used for proportioning in determining the corner location?

No.



(i) I, Alan D. Harrison
(type or print name) certify that the corner location shown
on this record was determined by me or under my direction and
control and that this U.S. Public Land Survey Monument Record is
correct and complete to the best of my knowledge and belief.

Alan D. Harrison
Signature

8/5/87
Date

U.S. PUBLIC LAND SURVEY MONUMENT RECORD

Index No. L-13

State of Wisconsin

County of Forest } ss.

I, Gary L. Pisoni, do hereby
certify that on the 27th day
of April, 1994, I found
evidence of the West Quarter
corner of Section 15
Township 36, North, Range
16 East, Fourth Principal Meridian,
as described hereon; and that from this evidence
I established a new monument and accessories
as described hereon to perpetuate the original
location of this corner.

Resident witnesses:

History of original corner establishment:

Original Government Survey in 1858 by James McBride. Set Quarter Section post, from which the following bear: Fir, 8", S 80° E, 22 lks; Tamarack, 10", N 37° W, 28 lks.

In 1928, Goodman Company set a 2½" cedar post and flue pipe 5' high from the original Tamarack B.T.

In 1934, Laird and White found wood stake and iron pipe. In 1987, Alan Harrison found iron pipe and post hole. Replaced iron pipe with an aluminum capped pipe monument and blazed and scribed the following B.T.s:

Cedar, 12", N 86° E, 23.93 feet
Cedar, 12", S 54° E, 17.22 feet
Spruce, 8", S 60° W, 30.17 feet
Steel sign post, NW, 0.71 feet

Description of corner evidence found:

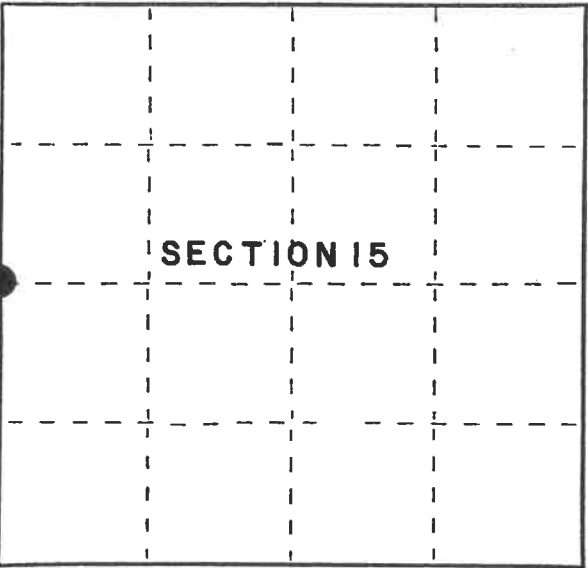
Found the monument and bearing trees as described above:

Cedar	12"	N 86° E	23.93 feet
Cedar	12"	S 54° E	17.22 feet
Steel sign post		Northwest	0.71 feet

Description of monument and accessories I established to perpetuate the original location of this corner.

Blazed and scribed the following new bearing trees; (Measurements taken to a nail in side of tree)

Hemlock	11"	S 63° W	45.10 feet
Red Maple	7"	N 48° W	3.37 feet



● = Corner monument restored.

Dated at Iron River, MI, this 26th day of May, 1995

Signature Gary L. Pisoni Title Land Surveyor Registration No. S-1634
(County Surveyor, Registered Land Surveyor, or other duly authorized official)

Office of Register of Deeds, County of Forest, I hereby certify that the within
instrument was filed in this office for record on the 24 day of March, 1997
at 1:30 o'clock P M.

(Register of Deeds)

By Paul J. Tschirky Deputy

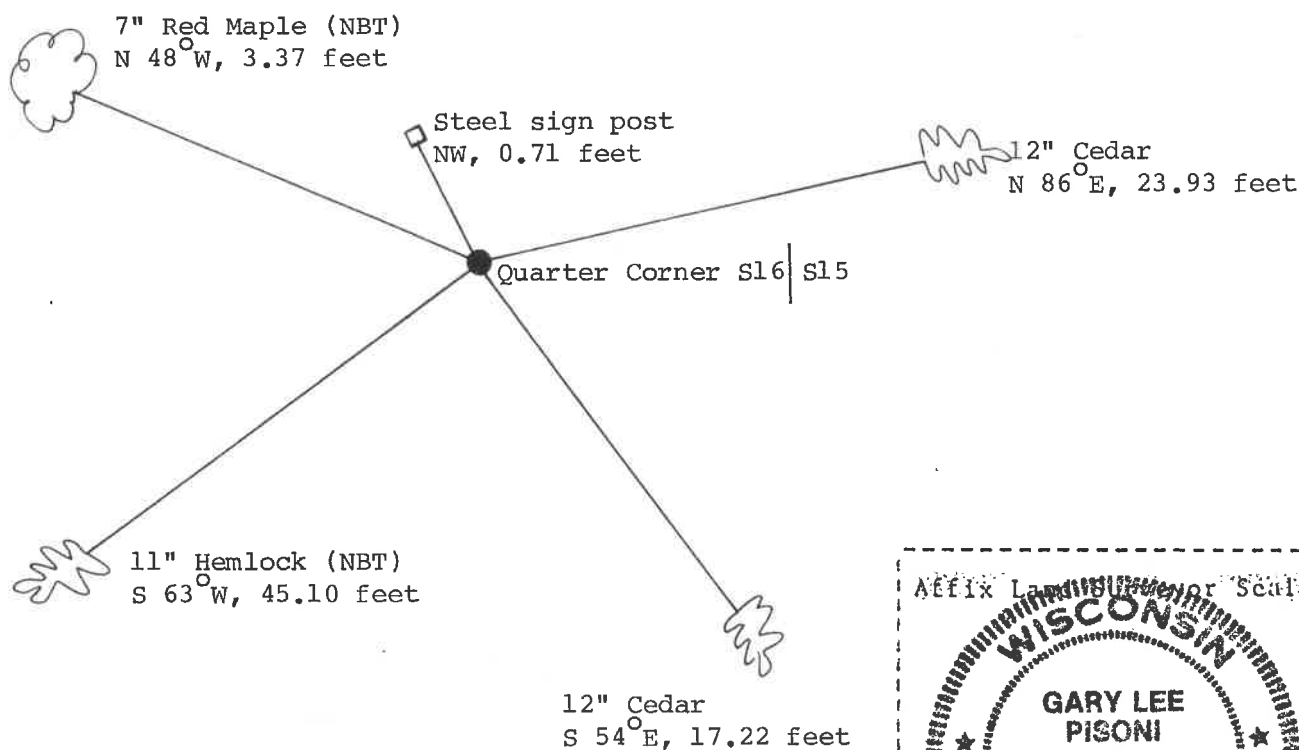
(e) Describe any material discrepancy between the location of the corner as restored or reestablished and the location of that corner as previously restored or reestablished by distance and direction. Show the discrepancy on the plan view drawing under (d), above. Show the distances between the corner as previously restored or reestablished and (1) the corner as restored or reestablished, and (2) to at least 2 of the witness monuments shown on the drawing in (d), above.

None

(f) Was the corner restored through acceptance of (1) an obliterated evidence location, or, (2) a found perpetuated location?

Restored through acceptance of a found perpetuated location.

(g&h) Was the corner reestablished through lost corner proportionate methods? If so, show the method, including the directions and distances to other public land survey corners used as evidence or used for proportioning in determining the corner location?



(i) 1. Gary L. Pisoni
[type or print name] certify that the corner location shown on this record was determined by me or under my direction and control and that this U.S. Public Land Survey Monument Record is correct and complete to the best of my knowledge and belief.

Signature

Date

10-2-95