

U S PUBLIC LAND SURVEY MONUMENT RECORD - ADDENDUM

NOTE: This form is intended and designed to fulfill all requirements of Wisconsin Administrative Code, Chapter A-E 7.08 U.S. Public Land Survey Monument Record (3) (a-i)

A-E 7.08(3)(a) Identity of corner
SOUTH 1/4 CORNER OF SECTION 14
TOWNSHIP 37 NORTH
RANGE 12 EAST OF THE 4TH PM
TOWN OF HILES,
COUNTY OF FOREST

WISCRS - FOREST COUNTY
N: 611,111.072 USft (XXX,XXX.XX)
E: 822,655.057 USft (XXX,XXX.XX)
Datum: NAD83 (2011)
GNSS Method RTN - Direct
GNSS Control WISCORS VRS



The coordinate value shown has been verified by the average of two or more GPS observations at a markedly different time. Values shown in parenthesis, are previously published measurements.

A-E 7.08(3)(b) Description of any record evidence, monument evidence, occupational evidence, testimonial evidence, or any other material evidence.

Original Surveyor: William E. Daugherty

Date of Original Survey Commenced: August 17, 1859
Completed: August 23, 1859

Original Accessories:
Aspen 10 S 19° E 16
Birch 6 N 5° E 11

See Previous Monument Record: Index No. N-19 - August 16, 1977 - Surveyor 1107 - William B. Cochrane.
October 17, 1985 - Surveyor 1394 - Norman A. Harrison - indicates a A-1 Federal Berntsen monument 33.00 feet north of this position on File #371223-19851017.

November 3, 1989 - Surveyor 1665 - John C. Schulke - indicates the position to be a "Railroad spike at the corner with reference county monument stamped to identify the location of the corner" on File #371224-19891103.

October 21, 1992 - WisDOT - found a railroad spike and set 4 Berntsen aluminum WisDOT reference monuments on Index No. N-19.

October 1, 1999 - Surveyor 1731 - Kip W. Soder - indicates the position as "Railroad spike found in place" on File #371223-19991001.

October 27, 2003 - Surveyor 1731 - Kip W. Soder - indicates the position as "P.K. nail found in place" on File #371214-20031027.

July 21, 2005 - Surveyor 1910 - Matthew E. Hoglund - indicates the position as "P.K. nail found" on File #371214-20050721.

November 15, 2005 - Surveyor 2197 - Michael A. Trembl indicates the position as "Existing P.K. Nail" on File #371214-20051115.

April 9, 2021 - Surveyor 809-8 - Michael S. Hess indicates the position as "Corner from ties" on File #371214-20210409.

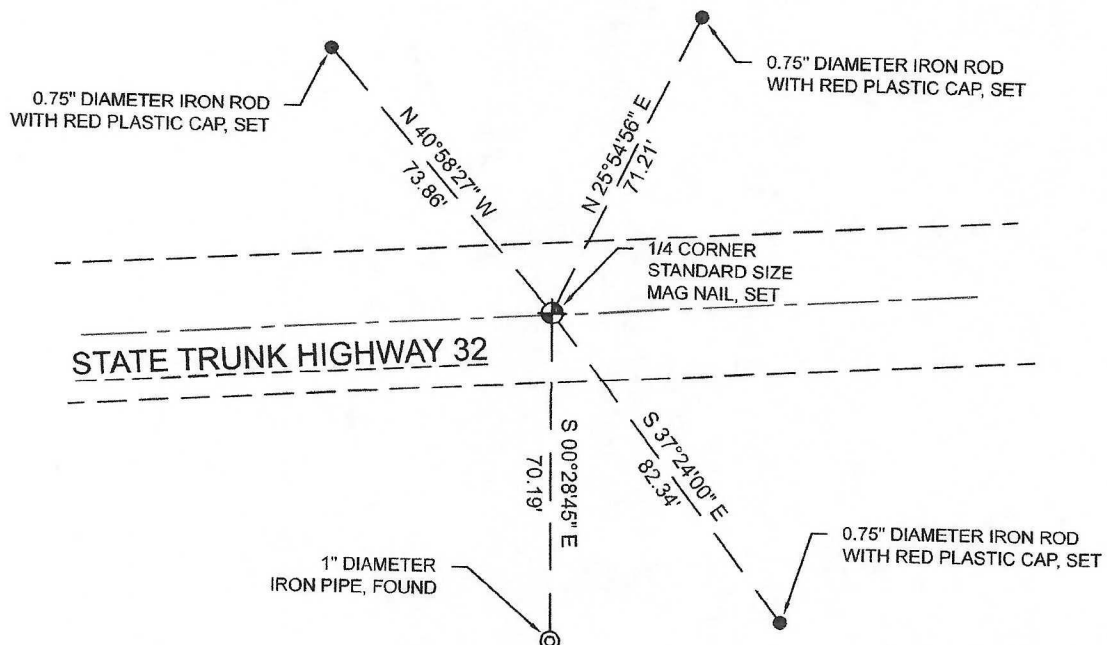
A-E 7.08(3)(f) Whether the corner was restored through acceptance of an obliterated location or a found perpetuated location.

October 26, 2021 - I did not find the corner monument or witnesses previously referenced, and considered the corner obliterated.
I set a standard size mag nail from existing survey maps: 371223-1991001, 371214-20050721, 371223-20131010

I accept this monument as a FOUND PERPETUATED LOCATION OF THE CORNER and established 4 new witnesses as shown below.

A-E 7.08(3)(c)(d)(e)(h) Plan view of corner with references to at least 4 witness monuments. If in disagreement with previously established corner, show the distances between the two corners and also indicate the ties to the disputed. The directions and distances to other public land survey corners used as evidence or used for determining the corner location.

BEARINGS LISTED TO THE NEAREST
SECOND ARE REFERENCED TO WISCONSIN
COUNTY COORDINATE REFERENCE
SYSTEM - FOREST COUNTY ZONE.
ALL OTHER BEARINGS ARE MAGNETIC.



A-E 7.08(3)(i) I, Jeffrey L. DeMuth, Professional Land Surveyor No. S-2656, hereby certify that the corner location on this record was determined by me or under my direction and control and that this U.S. Public Land Survey Monument Record is correct and complete to the best of my knowledge, and belief

SIGNATURE

August 09, 2022

DATE



43712140020

CERTIFIED LAND CORNER RESTORATION

Index No. **NIY**

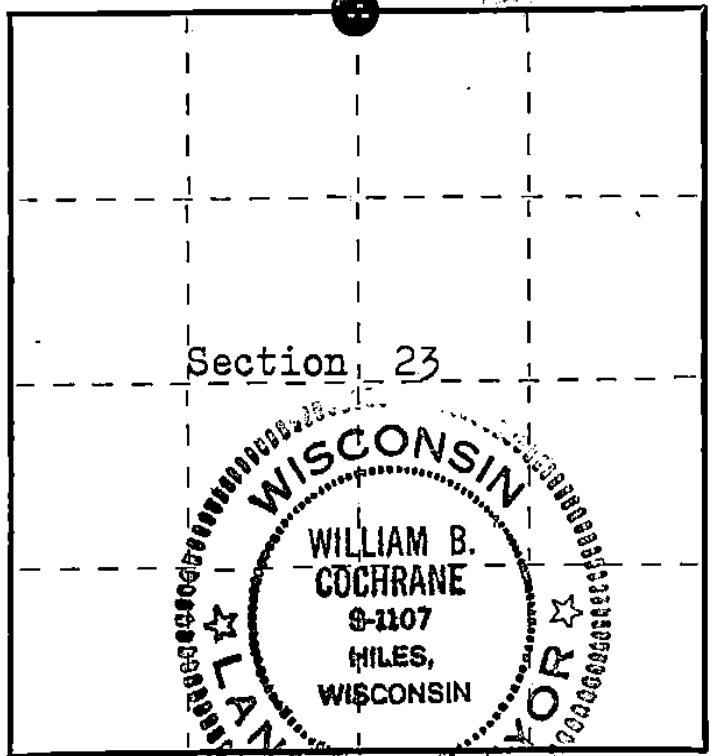
State of Wisconsin }
County of Forest } ss.

I William B. Cochrane, do hereby
certify that on the 16th day
of August, 19 77, I found
evidence of the North Quarter
corner of Section 23
Township 37 North, North, Range
12 East, Fourth Principal Meridian,
as described hereon; and that from this evidence
I established a new monument and accessories
as described hereon to perpetuate the original
location of this corner.

Resident witnesses:

Miles H. Cochrane

Brian James



O = Corner monument restored

History of original corner establishment:

Surveyed in 1859 by Wm. E. Daugherty
West Corrected between Sections 14 and 23.
40.08 chs. Set Quarter Section Post
Aspen, 10", S 19° E, 16 lks.
Birch, 6", N 5° E, 11 lks

Description of corner evidence found:

No original evidence was found. Fence line North, State Highway 32,
East and West. Corner position was located from center line of
Highway 32 and survey measurments. Other Surveyors have been
using this position for subdivisions and the position as set is
in agreement with the adjacent owners..

Description of monument and accessories I established to perpetuate the original location of this corner.

At the corner position, I set a Railroad spike in the blacktop.
From the Railroad spike: I set a 2½" Berntsen, A-1 Federal
Monument, 30 inches long, 33 feet North, with cap stamped:

T37N R12E, ¼, S14, S23, 1977, S-1107, REFERENCE CORNER 33FT

From the Railroad spike:

Power Pole #3712-23E11 bears S 67° E, 70.67 feet

W. Pine, 24", bears N 32° E, 90.25 feet

N 86° 10' 27" E, 2653.52 feet to the Northeast Section Corner
of Section 23.

S 86° 01' 50" W, 2720.34 feet to the Northwest Section Corner

Dated at Hiles, Wis., this 23rd day of August, 1977

Signature William B. Cochrane Title Land Surveyor Registration No. S-1107
(County Surveyor, Registered Land Surveyor, or other duly authorized official)

Office of Register of Deeds, County of FOREST, I hereby certify that the within
instrument was filed in this office for record on the 24th day of AUGUST, 19 77
at 10:20 o'clock A. M.

DOCUMENT NUMBER **112187**

Eugene Stetson
(Register of Deeds)
By _____ Deputy

FORM 985 H. C. MILLER CO., MILWAUKEE

43712140820

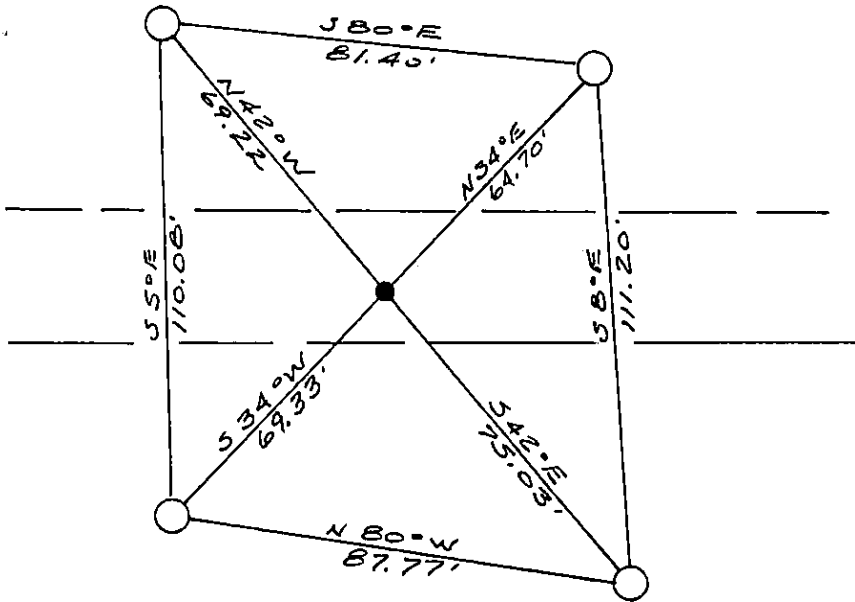
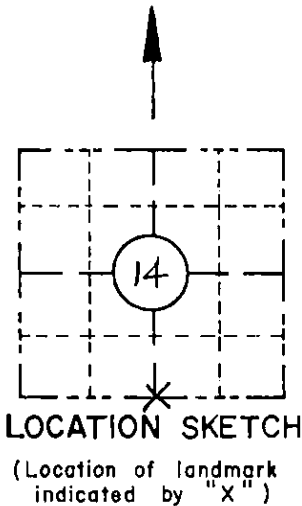
ORIGINAL ON FILE IN CO CLERK'S OFFICE
COPY HERE FOR REFERENCE

RECORD AND CERTIFICATION OF U.S.
PUBLIC LAND SURVEY CONTROL STATION
E-D-716-72

State of Wisconsin / Department of Transportation

District 7	Project I. D. 9261-03-00	Located by R.B. JOHNSON - SURVEY CREW CHIEF			
Corner S 1/4	14 SECTION	Township 37 N	Range (E,W) 12 E	County FOREST	
Wisconsin Coordinates CORNER	East (X) 2,267,013.16	North (Y) 189,363.29	Elevation (Z)	Zone N	
Control Station Name	East (X)	North (Y)	Elevation (Z)	Zone	
Horizontal — NAD 83 (1991) NORTH AMERICAN, 1983		CONTROL DATUM Vertical — MEAN SEA LEVEL, 1929 ADJUSTMENT			
Horizontal — _____ Order		SURVEY CONTROL Vertical — _____ Order			

SKETCH



CORNER
S 1/4
(N-19)
SECTION
14
TOWN
37 N
RANGE
12 E
N-19

I hereby certify that on the 21st day of OCT.
1992, that I did locate the above corner which was evidenced
by R.R. SPIKE
; I further certify that to perpetuate
the location of such corner I did, at the exact location
thereof, place a permanent marker consisting of _____
; I further certify that I did
establish 4 references or witness monuments consisting
of BERNTSEN MAGNETIC ALUMINUM MONUMENTS
WITH WISDOT CAP
located as shown above:

SEAL

Signature Registered Land Surveyor	Registration No. S--	Title
------------------------------------	-------------------------	-------

4 3712 140020