

U S PUBLIC LAND SURVEY MONUMENT RECORD - ADDENDUM

NOTE: This form is intended and designed to fulfill all requirements of Wisconsin Administrative Code, Chapter A-E 7.08 U.S. Public Land Survey Monument Record (3) (a-i)

A-E 7.08(3)(a) Identity of corner
SOUTHEAST CORNER OF SECTION 22
TOWNSHIP 37 NORTH
RANGE 12 EAST OF THE 4TH PM
TOWN OF HILES,
COUNTY OF FOREST

WISCRS - FOREST COUNTY
N: 605,601.597 USft (XXX,XXX.XX)
E: 820,040.815 USft (XXX,XXX.XX)
Datum: NAD83 (2011)
GNSS Method RTN - Direct
GNSS Control WISCORS VRS



The coordinate value shown has been verified by the average of two or more GPS observations at a markedly different time. Values shown in parenthesis, are previously published measurements.

A-E 7.08(3)(b) Description of any record evidence, monument evidence, occupational evidence, testimonial evidence, or any other material evidence.

Original Surveyor: William E. Daugherty

Date of Original Survey Commenced: August 17, 1859
Completed: August 23, 1859

Original Accessories:
Hemlock 8 S 60° E 3
Cedar 14 S 72° W 12

See Previous Monument Record: Index No. R-17 - March 11, 1987 - Surveyor 1665 - John C. Schulke
February 7, 1998 - Surveyor 1731 - Kip W. Soder - indicates this position as "railroad spike in pavement found" on Record #371227-19980207A.
June 11, 2004 - Surveyor 1731 - Kip W. Soder - indicates this position as "Forest Co. Aluminum Cap Monument" on Record #371223-20040611.
September 3, 2009 - Surveyor 2197 - Michael A. Tremi - indicates this position as "P.K. nail" on Record #371229-20090903.
November 2, 2012 - Surveyor 1731 - Kip W. Soder - indicates this position as "P.K. nail found in place" on Record #371227-20121102.
November 5, 2014 - Surveyor 1731 - Kip W. Soder - indicates this position as "P.K. nail in pavement of blacktop road" on Record #371227-120141105.

A-E 7.08(3)(f) Whether the corner was restored through acceptance of an obliterated location or a found perpetuated location.

December 02, 2021 - I did not find the section corner monument, and consider it to be obliterated.

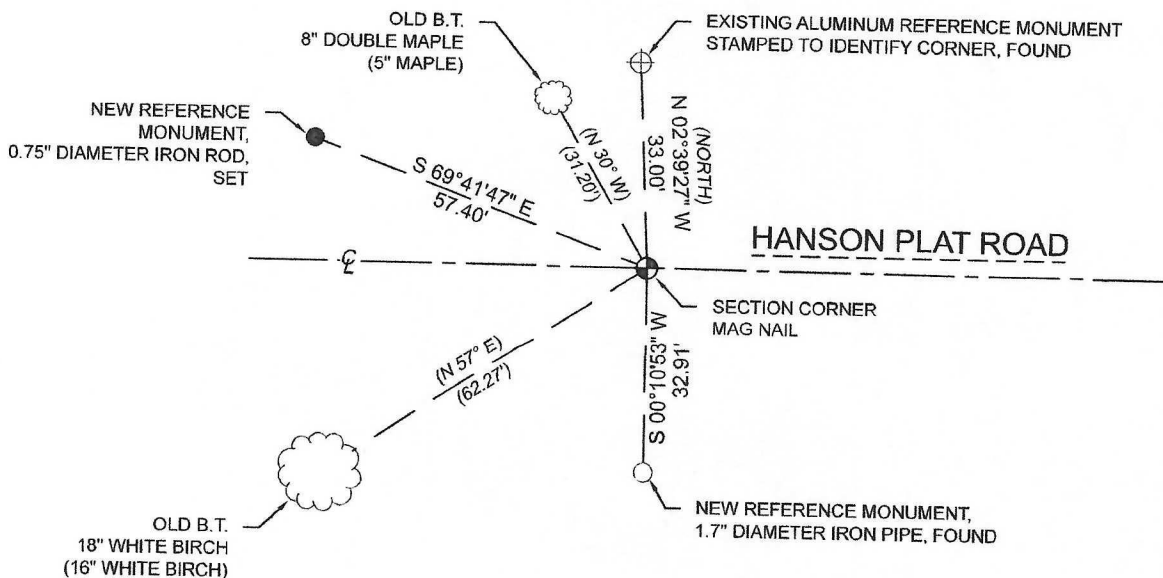
I did find Cochrane's reference monument, as well as 2 B.T.'s, and steel sign post as recovered or established and noted on Certified Land Corner Restoration R-17.

I set a standard size MAG NAIL using survey maps of record and existing reference monuments.

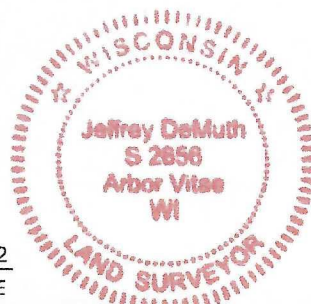
I accept this monument as a FOUND PERPETUATED LOCATION OF THE CORNER and established 2 new witnesses as shown below.

A-E 7.08(3)(c)(d)(e)(h) Plan view of corner with references to at least 4 witness monuments. If in disagreement with previously established corner, show the distances between the two corners and also indicate the ties to the disputed. The directions and distances to other public land survey corners used as evidence or used for determining the corner location.

BEARINGS LISTED TO THE NEAREST
SECOND ARE REFERENCED TO WISCONSIN
COUNTY COORDINATE REFERENCE
SYSTEM - FOREST COUNTY ZONE.
ALL OTHER BEARINGS ARE MAGNETIC.



A-E 7.08(3)(i) I, Jeffrey L. DeMuth, Professional Land Surveyor No. S-2656, hereby certify that the corner location on this record was determined by me or under my direction and control and that this U.S. Public Land Survey Monument Record is correct and complete to the best of my knowledge, and belief



SIGNATURE

August 15, 2022

DATE

43712220000