

U S PUBLIC LAND SURVEY MONUMENT RECORD - ADDENDUM

NOTE: This form is intended and designed to fulfill all requirements of Wisconsin Administrative Code, Chapter A-E 7.08 U.S. Public Land Survey Monument Record (3) (a-i)

A-E 7.08(3)(a) Identity of corner
MEANDER CORNER - SOUTH LINE OF
GOVERNMENT LOT 2, SECTION 22
TOWNSHIP 37 NORTH
RANGE 12 EAST OF THE 4TH PM
TOWN OF HILES,
COUNTY OF FOREST

WISCRS - FOREST COUNTY
N: 605,605.704 USft (XXX,XXX.XX)
E: 818,818.722 USft (XXX,XXX.XX)
Datum: NAD83 (2011)
GNSS Method RTN - Direct
GNSS Control WISCRS VRS



MEANDER
CORNER

The coordinate value shown has been verified by the average of two or more GPS observations at a markedly different time. Values shown in parenthesis, are previously published measurements.

A-E 7.08(3)(b) Description of any record evidence, monument evidence, occupational evidence, testimonial evidence, or any other material evidence.

Original Surveyor: William E. Daugherty

Date of Original Survey Commenced: August 17, 1859
Completed: August 23, 1859

Original Accessories:
Cedar 12 N 67° E 12
Birch 12 S 41° E 16

See Previous Monument Record: Index No. R-16 & 17 - September 3, 1986 - Surveyor 1665 - John C. Schulke

February 7, 1998 - Surveyor 1731 - Kip W. Soder - indicates this position as "2 1/2" dia. aluminum cap mon. found" on Record #371227-19980207A.

November 2, 2012 - Surveyor 1731 - Kip W. Soder - indicates this position as "Forest Co. aluminum cap monument found" on Record #371227-20121102.

November 5, 2014 - Surveyor 1731 - Kip W. Soder - indicates this position as "Forest Co. aluminum cap monument found" on Record #371227-120141105.

A-E 7.08(3)(f) Whether the corner was restored through acceptance of an obliterated location or a found perpetuated location.

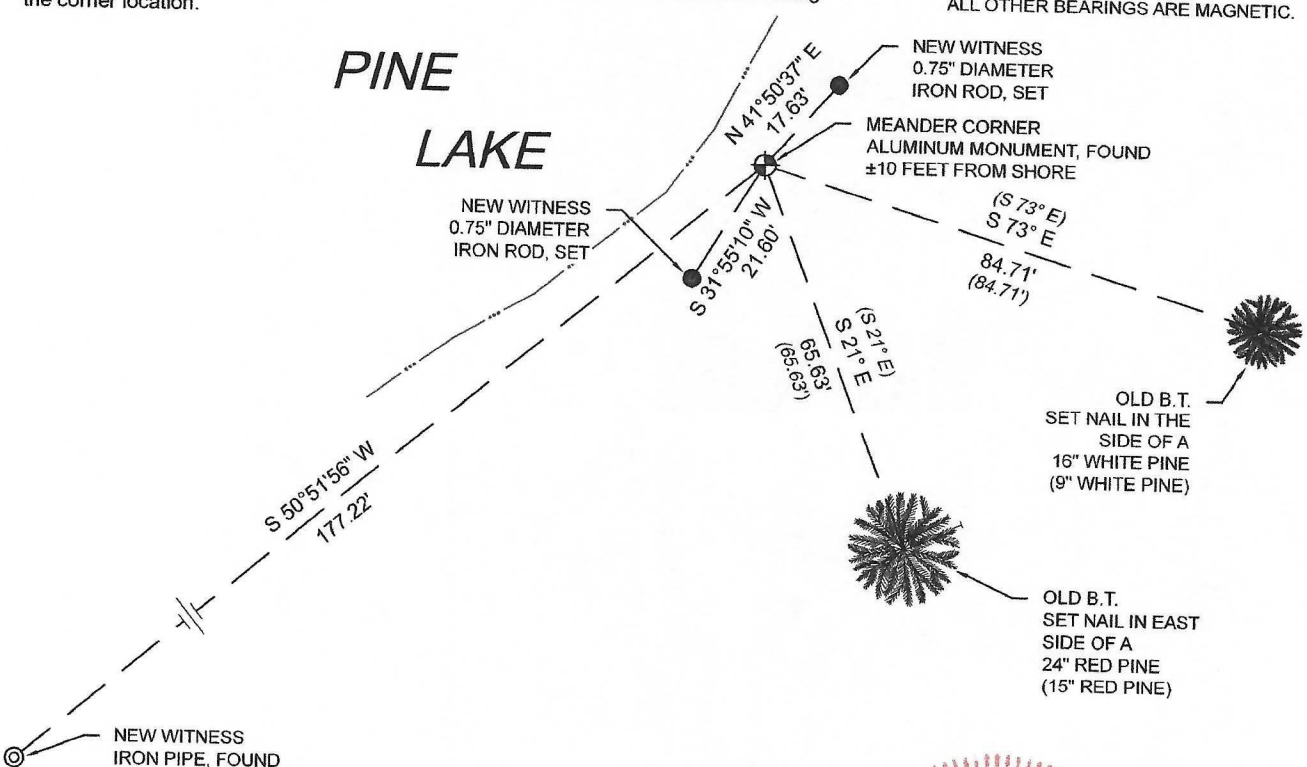
December 02, 2021 - I found a 2 1/2" diameter aluminum pipe with an aluminum cap affixed to the top & stamped to identify the corner.

I also found 2 B.T.'s recovered or established as noted on Certified Land Corner Restoration R-16 & 17.

I accept this monument as a FOUND PERPETUATED LOCATION OF THE CORNER and established 3 new witnesses as shown below.

A-E 7.08(3)(c)(d)(e)(h) Plan view of corner with references to at least 4 witness monuments. If in disagreement with previously established corner, show the distances between the two corners and also indicate the ties to the disputed. The directions and distances to other public land survey corners used as evidence or used for determining the corner location.

BEARINGS LISTED TO THE NEAREST
SECOND ARE REFERENCED TO WISCONSIN
COUNTY COORDINATE REFERENCE
SYSTEM - FOREST COUNTY ZONE.
ALL OTHER BEARINGS ARE MAGNETIC.



A-E 7.08(3)(i) I, Jeffrey L. DeMuth, Professional Land Surveyor No. S-2656, hereby certify that the corner location on this record was determined by me or under my direction and control and that this U.S. Public Land Survey Monument Record is correct and complete to the best of my knowledge, and belief

SIGNATURE

August 15, 2022

DATE



43712220010