

241615

NOV 08 2023

CORTNEY BRITTEN CLEEREMAN
REGISTER OF DEEDS

U S PUBLIC LAND SURVEY MONUMENT RECORD - ADDENDUM

NOTE: This form is intended and designed to fulfill all requirements of Wisconsin Administrative Code, Chapter A-E 7.08 U.S. Public Land Survey Monument Record (3) (a-i)

A-E 7.08(3)(a) Identity of corner:
SOUTH 1/4 CORNER SECTION 23,
TOWNSHIP 37 NORTH,
RANGE 12 EAST OF THE 4TH PM,
TOWN OF HILES, COUNTY OF FOREST

WISCRS - FOREST COUNTY
N: 605,764.348 USft (XXX,XXX.XXX)
E: 822,698.046 USft (XXX,XXX.XXX)
Datum: NAD83 (2011)
GNSS Method RTK
GNSS Control WISCORS VRS



The coordinate value shown has been verified by the average of two or more GPS observations at a markedly different time. Coordinates shown in parenthesis are previously published values.

A-E 7.08(3)(b)

Original Surveyor: William E. Daugherty

Date of Original Survey Commenced: August 17, 1859
 Completed: August 23, 1859

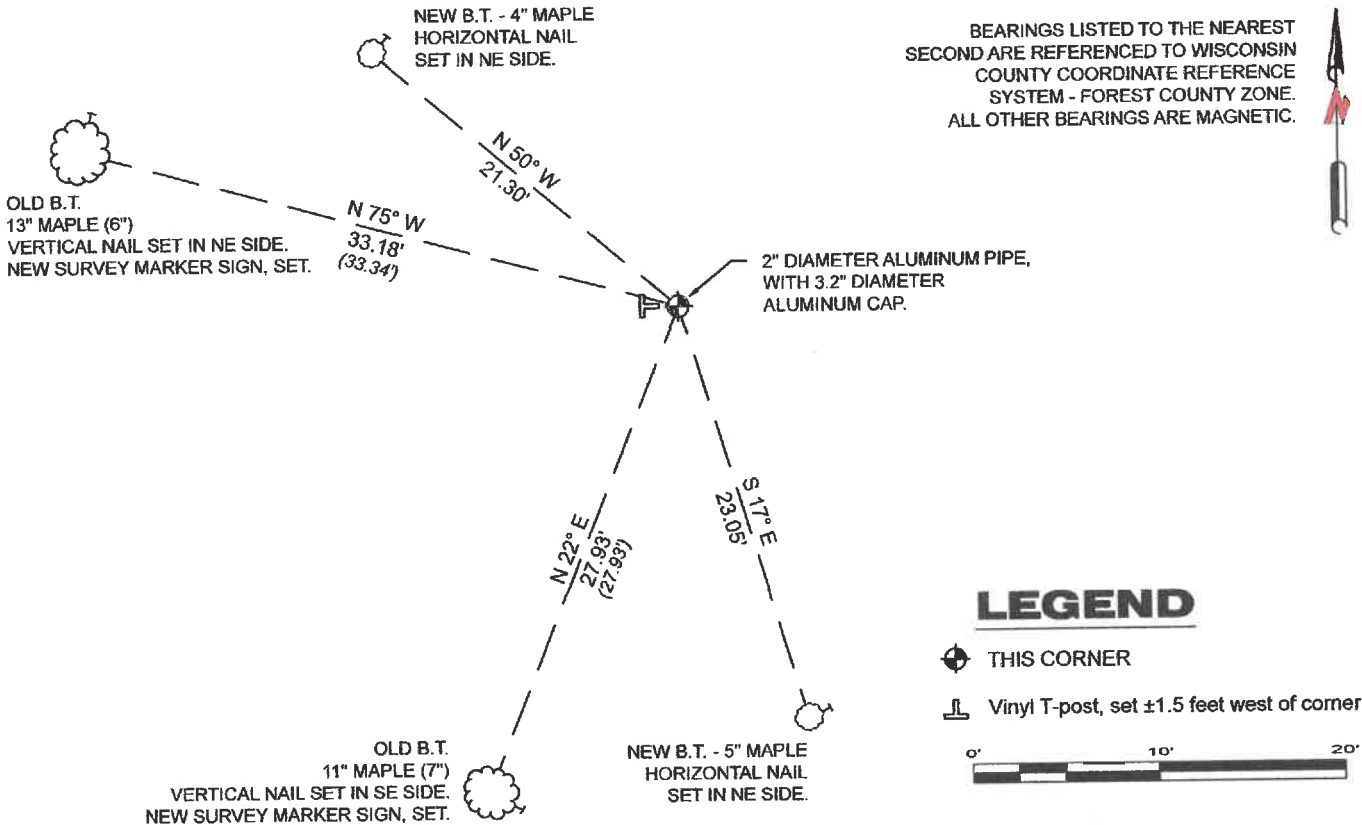
Original Accessories:
Hemlock 12 N 82° W 32 Links
Birch 10 S 25° W 23 Links

See previous Certified Land Corner Restoration R19 - August 23, 1977 - Surveyor 1107 - William B. Cochrane - THENCE:

September 3, 2009 - Surveyor 2197 - Michael A. Trembl - indicate this position as "2" alum. pipe mon." on Forest Co. Surveyor File #371223.20090903.

May 3, 2023 - I found a 2" diameter aluminum pipe with a 3.2" diameter aluminum cap stamped to identify corner. The monument extends ±9" above grade. I also found 2 of Cochrane's reference monuments.
I established 2 new reference monuments as shown below.

A-E 7.08(3)(c)(d) Plan view of corner with references to at least 4 witness monuments.



A-E 7.08(3)(e) 1859 Surveyor set a post, 1977 Surveyor set a 2 1/2" Berntsen, A-1 Federal monument, 2009 Surveyor found a 2" alum. pipe mon.. 2023, I found a 2" diameter aluminum pipe, with a 3.2" diameter aluminum cap, stamped to identify corner.

A-E 7.08(3)(f) I accept this monument as a FOUND PERPETUATED LOCATION of the corner.

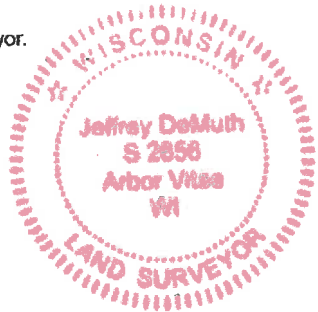
A-E 7.08(3)(g)(h) This corner was determined through lost-corner-proportionate methods by previous surveyor.

A-E 7.08(3)(i) I, Jeffrey L. DeMuth, Professional Land Surveyor No. S-2656, hereby certify that the corner location on this record was determined by me or under my direction and control, and that this U.S. Public Land Survey Monument Record is correct and complete to the best of my knowledge, and belief.

SIGNATURE

May 24, 2023

DATE



43712230020

R-19

CERTIFIED LAND CORNER RESTORATION

Index No. **R 19**

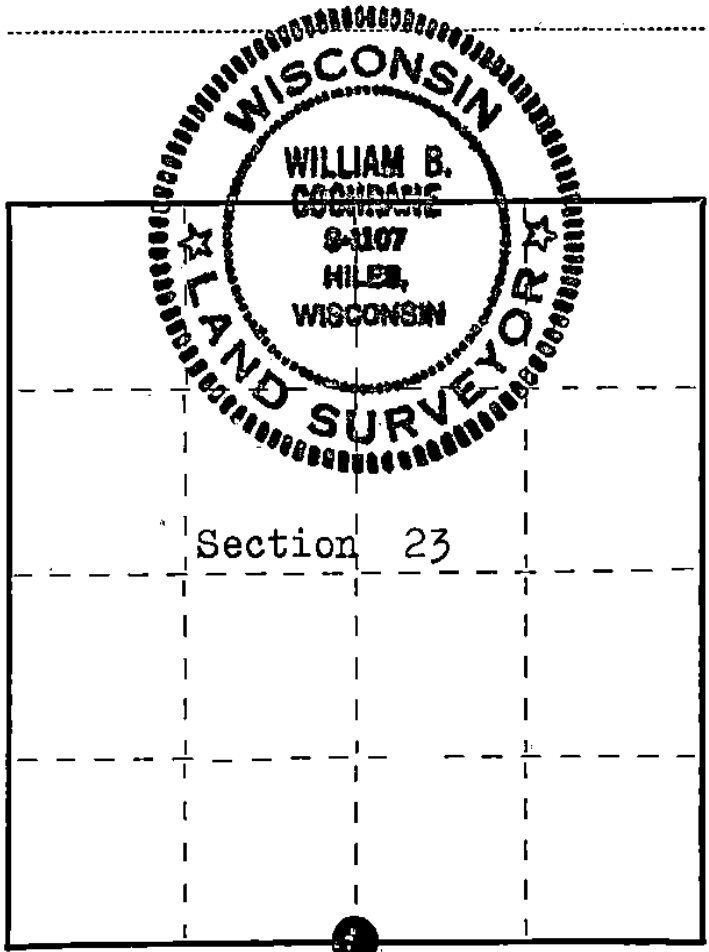
State of Wisconsin }
County of Forest } ss.

I William B. Cochrane, do hereby
certify that on the 20th day
of August, 1977, I found
evidence of the South Quarter
corner of Section 23
Township 37 North, North, Range
12 East, Fourth Principal Meridian,
as described hereon; and that from this evidence
I established a new monument and accessories
as described hereon to perpetuate the original
location of this corner.

Resident witnesses:

Miles H. Cochrane

Brian James



○ = Corner monument restored.

History of original corner establishment:

Surveyed in 1859 by Wm. E. Daugherty
West Corrected between Sections 23 and 26.
40.00 chs. Set Quarter Section Post
Hemlock, 12", N 82° W, 32 lks.
Birch, 10", S 25° W, 23 lks.

Description of corner evidence found:

No original evidence of the corner was found. The corner area
has been farmed and logged many times.

I set the position for the Quarter Corner at the midpoint on line
between the Southeast and Southwest Sections Corners of Section 23.

Description of monument and accessories I established to perpetuate the original location of this corner.

At the corner position, I set a 2½" Berntsen, A-1 Federal Monument,
30 inches long, with cap stamped:

T37N R12E, ¼, S23, S26, 1977, S-1107

From which the following bear:

Maple, 6", N 75° W, 33.34 feet

Maple, 7", S 22° W, 27.93 feet

N 86° 15' 54" E, 2662.30 feet to the Southeast Section Corner
of Section 23.

S 86° 15' 54" W, 2662.30 feet to the Southwest Section Corner.

Dated at Hiles, Wis., this 23rd day of August, 1977.

Signature William B. Cochrane Title Land Surveyor Registration No. S-4107
(County Surveyor, Registered Land Surveyor, or other duly authorized official)

Office of Register of Deeds, County of FOREST, I hereby certify that the within
instrument was filed in this office for record on the 24th day of AUGUST, 1977
at 10:20 o'clock A. M.

Eugene Stutzman
(Register of Deeds)

By _____ Deputy

DOCUMENT NUMBER **112189**

43712230020