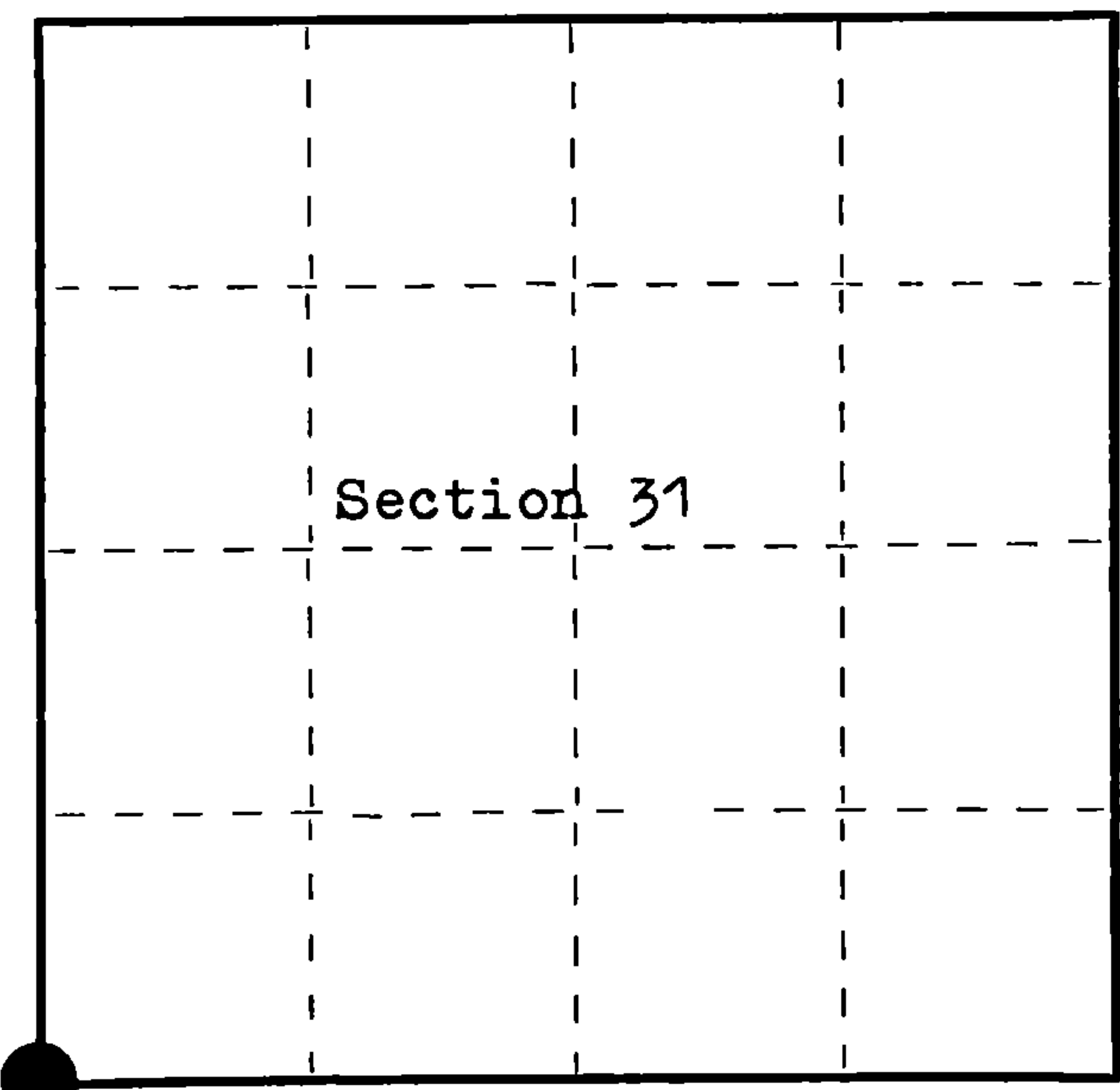


FORM 985 H. C. MILLER CO., MILWAUKEE

State of Wisconsin }  
County of Forest } ss.  
I William B. Cochrane, do hereby  
certify that on the 15 th day  
of October, 1977, I found  
evidence of the Southwest Section  
corner of Section 31  
Township 37, North, Range  
13 East, Fourth Principal Meridian,  
as described hereon; and that from this evidence  
I established a new monument and accessories  
as described hereon to perpetuate the original  
location of this corner.  
Resident witnesses:  
Miles H. Cochrane  
Brian James  
James Jackson



○ = Corner monument restored.

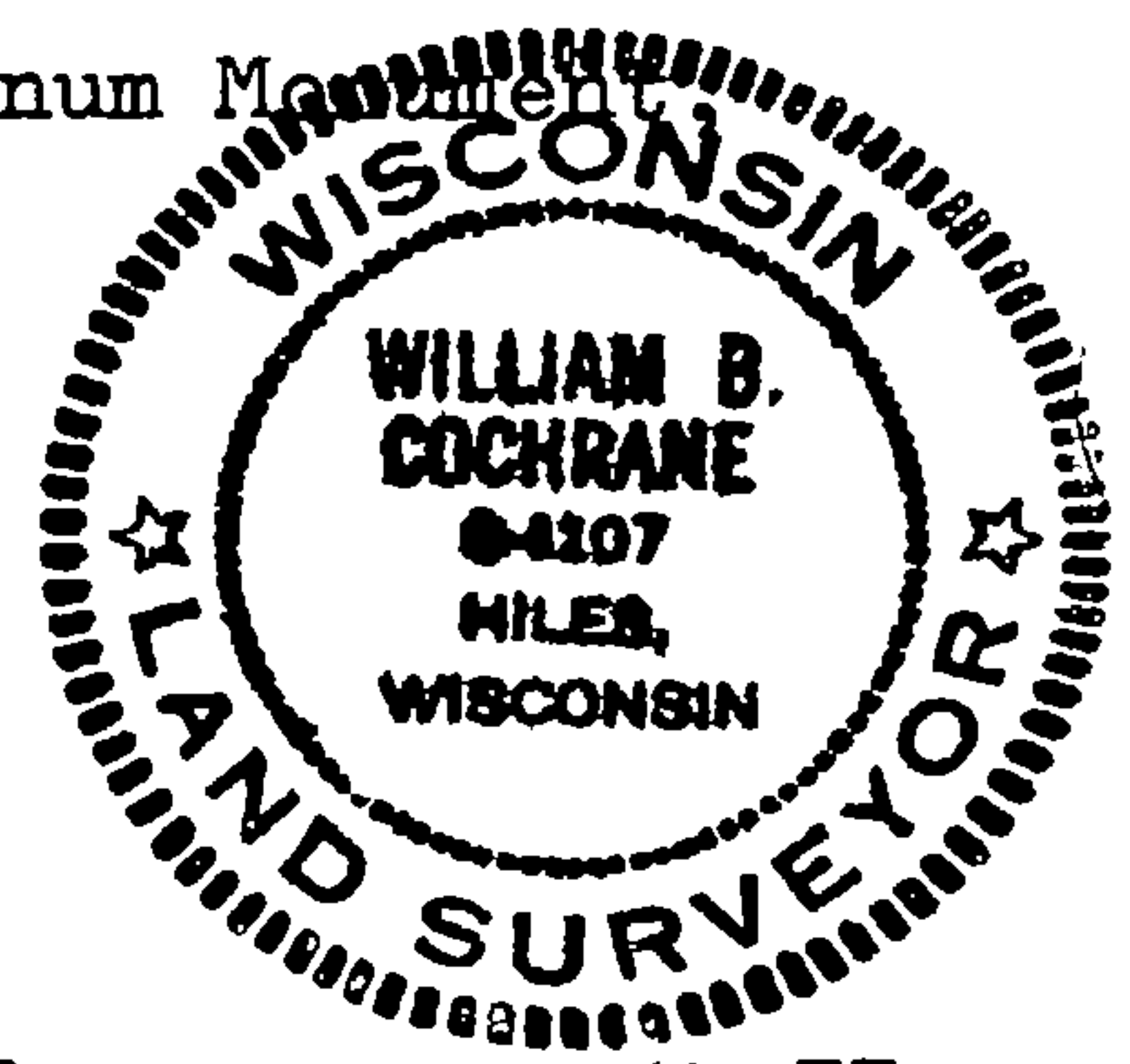
CERTIFIED LAND CORNER RESTORATION

Index No. Z I  
Z-1

History of original corner establishment:  
Surveyed in 1858 by Alfred Millard  
West between Sections 6 and 31. 79.90 chains intersect range line  
105 links North of temporary post and set post for corner of  
Towns 36 and 37 North, Ranges 12 and 13 East.  
Y. Birch, 22", N 76° W, 50 links 4.0 Chs. West Ent. Swp. N&S  
Fir, 14", N 66° E, 50 links 9.0 Chs. North Ent. Swp. NNE&SW  
Y. Birch, 22", S 46° E, 69 links 8.8 Chs. East Ent. Swp. N&S  
Sugar, 12", S 69° W, 11 links

Description of corner evidence found:  
No original evidence was found. The area has been logged and burned  
over many years ago.  
Old 4X4 scribed cedar post laying on the ground and the post hole.  
From the post hole: Maple, 14", bears N 62° E, 17 links  
Maple, 10", bears N 24° W, 25.5 links  
The above trees were scribed and blazed about 40 years ago by an  
unknown surveyor.  
The swamp calls from the field notes also check from the post hole.

Description of monument and accessories I established to perpetuate the original location of this corner.  
I replaced the post with a 2 1/2" Berntsen A-1 Federal Aluminum Monument  
30 inches long, with the cap stamped:  
T37N, R12E, R13E, S1, S6, S31, S36, T36N, 1977, S-1107  
From which the following bear:  
Maple, 14", N 62° E, 11.55 feet (Old B.T. Found)  
Maple, 7", S 52° W, 10.31 feet  
Maple, 10", N 24° W, 16.84 feet (Old B.T. Found)



Dated at Hiles, Wis., this 23 rd day of November, 1977.

Signature William B. Cochrane Title Land Surveyor Registration No. S-1107  
(County Surveyor, Registered Land Surveyor, or other duly authorized official)

Office of Register of Deeds, County of FOREST, I hereby certify that the within  
instrument was filed in this office for record on the 29th day of November, 1977  
at 11:30 o'clock A. M.

Eugene Staszny  
(Register of Deeds)  
By Deputy

DOCUMENT NUMBER 112878

43712360000

# U.S. PUBLIC LAND SURVEY MONUMENT RECORD

Index No. Z-25

State of Wisconsin

County of Forest

ss.

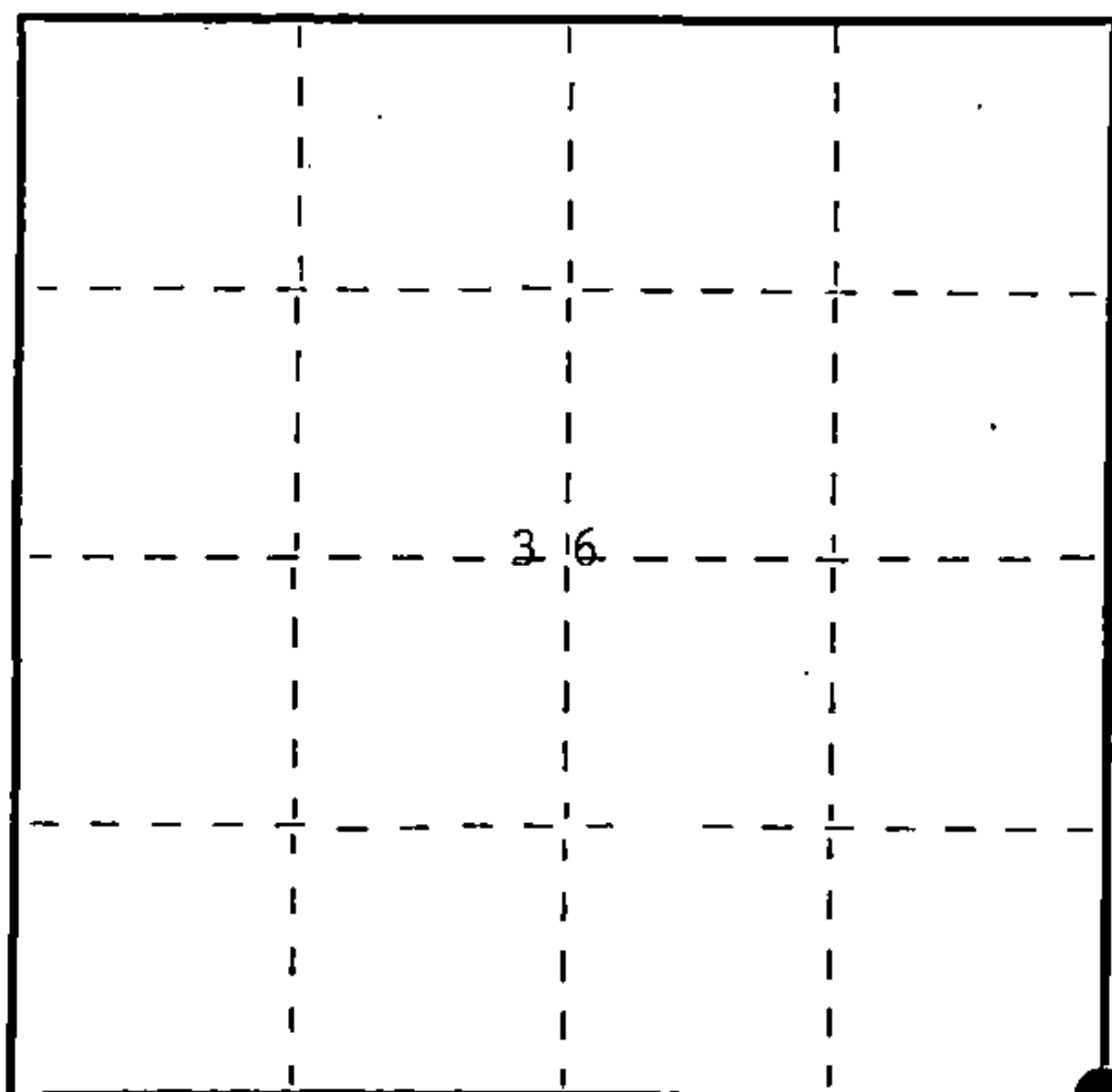
I Milo E. Stefan, do hereby certify that on the 21st day of February, 1989, I found evidence of the Southeast Township corner of Township 37, North, Range 12 East, Fourth Principal Meridian, as described hereon; and that from this evidence I established a new monument and accessories as described hereon to perpetuate the original location of this corner.

Resident witnesses:

Richard Belliveau

Myron Smith

Jeffrey Kennedy



○ = Corner monument restored.

History of original corner establishment:

1858 - Alfred Millard established this corner at 79.90 chains from the east and 105 links north of the temporary corner from the south and set a wood post with BTs:  
 14" Fir, N66°E, 50 links      12" Sugar, S69°W, 11 links  
 22" Yellow Birch, S46°E, 69 links      22" Yellow Birch, N76°W, 50 links  
 1977 - Wm. Cochrane restored the corner from a found cedar post with local BTs:  
 14" Sugar, N62°E, 11.55'      10" Sugar, N24°W, 16.84'  
 He made a new BT: 7" Sugar, S52°W, 10.51' and filed a certificate as document #112878 dated 11/23/77.

Description of corner evidence found:

We found the Forest County monument and Cochranes BTs in excellent condition.

Description of monument and accessories I established to perpetuate the original location of this corner.

We made one new BT: 7" Sugar Maple, S7°E, 22.65'  
 Placed a steel sign post Northwest, 1.3'  
 Placed BT tags to the front and back of each BT, scribed the stump blaze and painted a red band around the trees.

Dated at Rhineland, Wis., this 8th day of April, 1989

Signature Milo E. Stefan Title Land Surveyor Registration No. 1558  
 (County Surveyor, Registered Land Surveyor, or other duly authorized official)

Office of Register of Deeds, County of \_\_\_\_\_, I hereby certify that the within instrument was filed in this office for record on the \_\_\_\_\_ day of \_\_\_\_\_, 19\_\_\_\_ at \_\_\_\_\_ o'clock \_\_\_\_\_ M.

(Register of Deeds)

By \_\_\_\_\_ Deputy

FORM NO. 985-A

H.C. Miller Company

Stock No. 26273

DOCUMENT NUMBER

137278

REGISTER'S OFFICE

Forest County, Wis.

Received for record this 21st day

of April A.D. 1989 at

2:10 o'clock A.M. and recorded

In Vol. COCHRANE RESTORATIONS

page 2-25

Paul H. Schrammer

Register of Deeds

43712360000

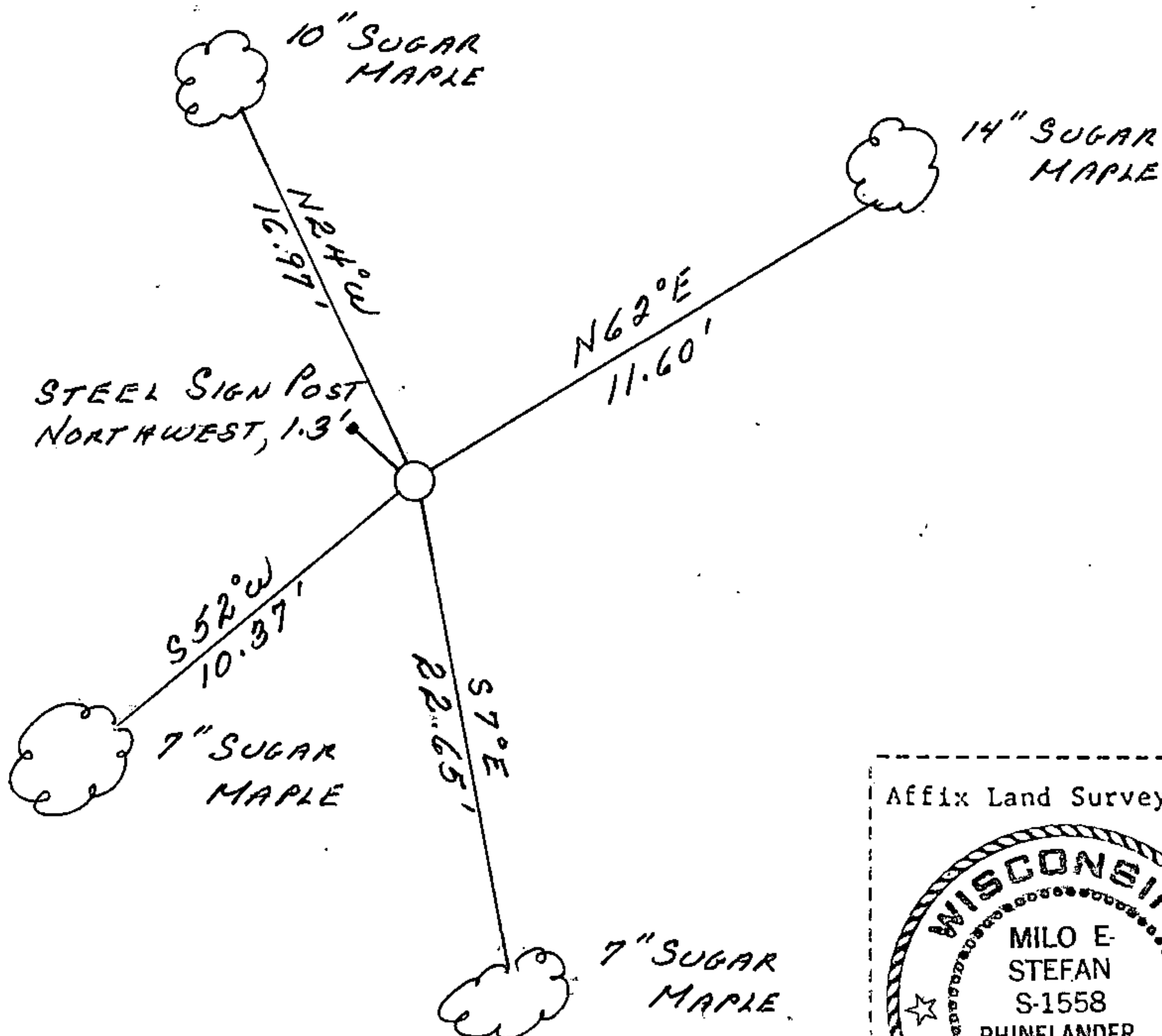
(e) Describe any material discrepancy between the location of the corner as restored or reestablished and the location of that corner as previously restored or reestablished by distance and direction. Show the discrepancy on the plan view drawing under (d), above. Show the distances between the corner as previously restored or reestablished and (1) the corner as restored or reestablished, and (2) to at least 2 of the witness monuments shown on the drawing in (d), above.

N/A

(f) Was the corner restored through acceptance of (1) an obliterated evidence location, or, (2) a found perpetuated location?

(2) a found perpetuated location

(g&h) Was the corner reestablished through lost corner proportionate methods? If so, show the method, including the directions and distances to other public land survey corners used as evidence or used for proportioning in determining the corner location?



Affix Land Surveyor Seal



(i) 1. Milo E. Stefan

(type or print name) certify that the corner location shown on this record was determined by me or under my direction and control and that this U.S. Public Land Survey Monument Record is correct and complete to the best of my knowledge and belief.

Milo E. Stefan  
Signature

4/8/89  
Date

Survey Requested by:

Dale S. Staeger  
District Ranger

4/25/89  
Date