

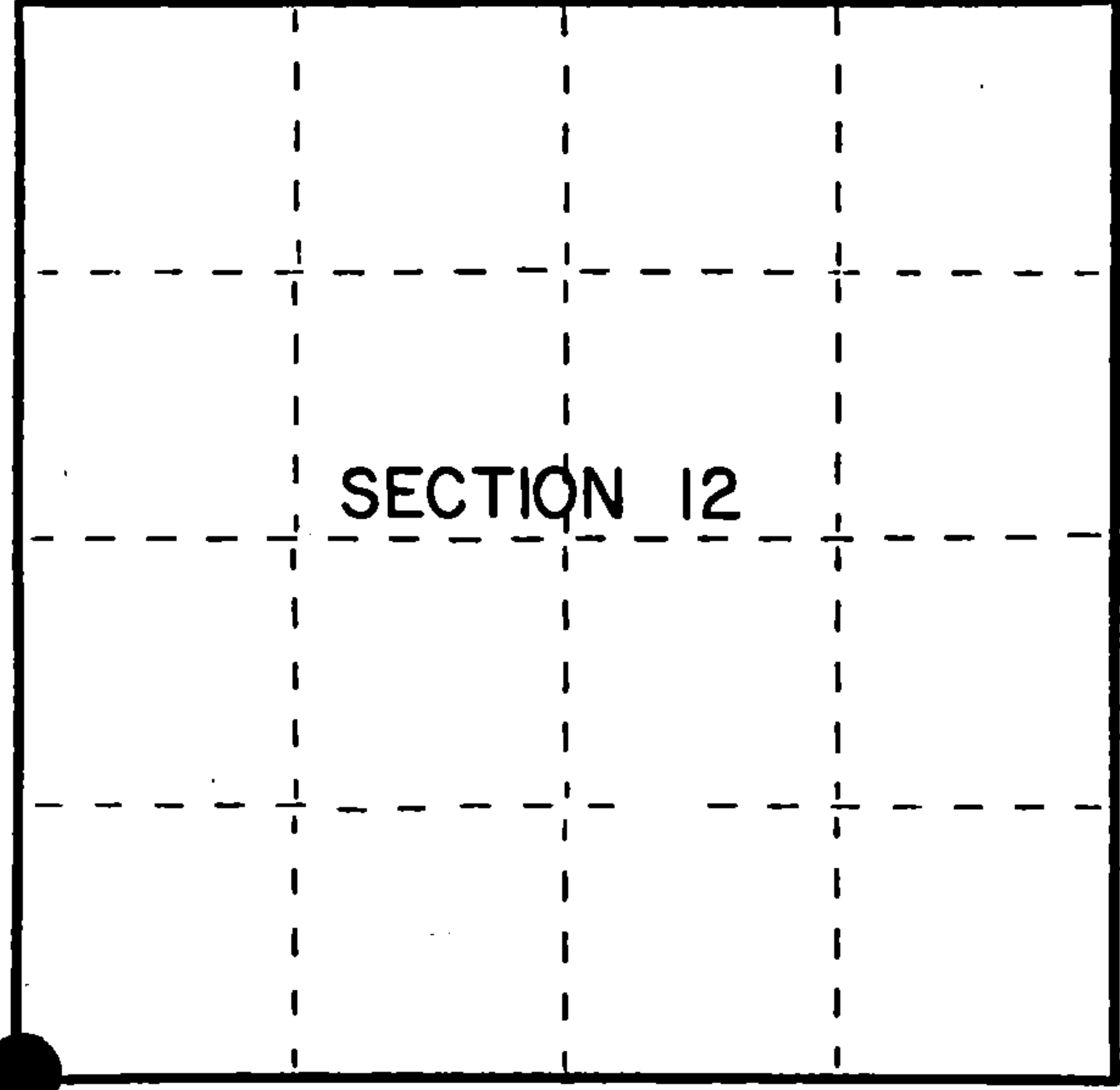
U.S. PUBLIC LAND SURVEY MONUMENT RECORD

Index No. J-21

State of Wisconsin }
County of Forest } ss.

I Gary L. Pisoni, do hereby
certify that on the 30th day
of October, 1990, I found
evidence of the Southwest Section
corner of Section 12
Township 37, North, Range
13 East, Fourth Principal Meridian,
as described hereon; and that from this evidence
I established a new monument and accessories
as described hereon to perpetuate the original
location of this corner.

Resident witnesses:



● = Corner monument restored.

History of original corner establishment:
Original Government Survey in 1865 by J.L. Nowlin.
North between Sections 13 and 14, at 80.00 chains, set Section Corner Post
to Sections 11, 12, 13 and 14, from which the following bear;

Sugar	15"	N22°E	12 lks.
Sugar	12"	N05°W	30 lks.

Description of corner evidence found:
No original corner evidence was recovered.

I re-established the corner position by double proportionate method between the
West Quarter Corner of Section 12 and the Southwest Section Corner of Section 13,
and between the Northwest Section Corner of Section 14 and the South Quarter Corner
of Section 12.

Description of monument and accessories I established to perpetuate the original location of this corner.
At the corner position, set a 2½ inch diameter aluminum pipe monument, 3 feet long,
3 inches above the ground surface, with an aluminum cap stamped; T37N, R13E, S11,
S12, S13, S14, 1990, S-1634. From which the following new blazed and scribed bearing
trees bear; (all measurements taken to a nail in side of tree)

Cedar	10"	N66°W	86.33 feet
Red Maple	10"	N26°W	61.05 feet
Spruce	9"	N13°E	29.73 feet
Db1 Red Maple	9"	N47°E	59.85 feet
Steel Sign Post		S37°W	0.92 feet

Dated at Iron River, MI, this 8th day of December, 1990

Signature Gary L. Pisoni Title Land Surveyor Registration No. S-1634
(County Surveyor, Registered Land Surveyor, or other duly authorized official)

Office of Register of Deeds, County of Forest, I hereby certify that the within
instrument was filed in this office for record on the 10th day of March, 1993
at 10:45 o'clock A.M.

Paul Schenckner
(Register of Deeds)

By Deputy

FORM NO. 985-A
H.C. Miller Company

Stock No. 26273

146926

43713110000

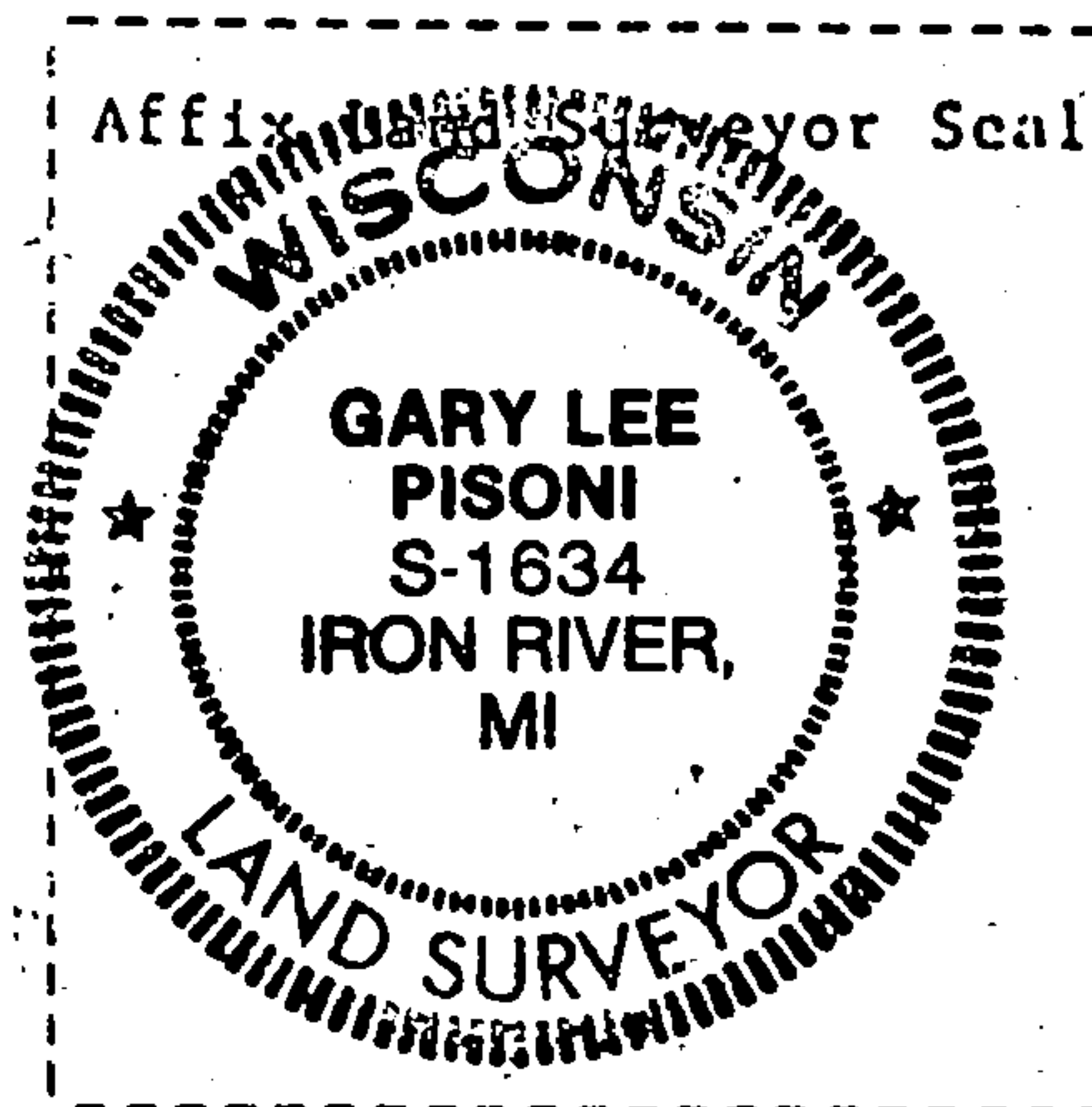
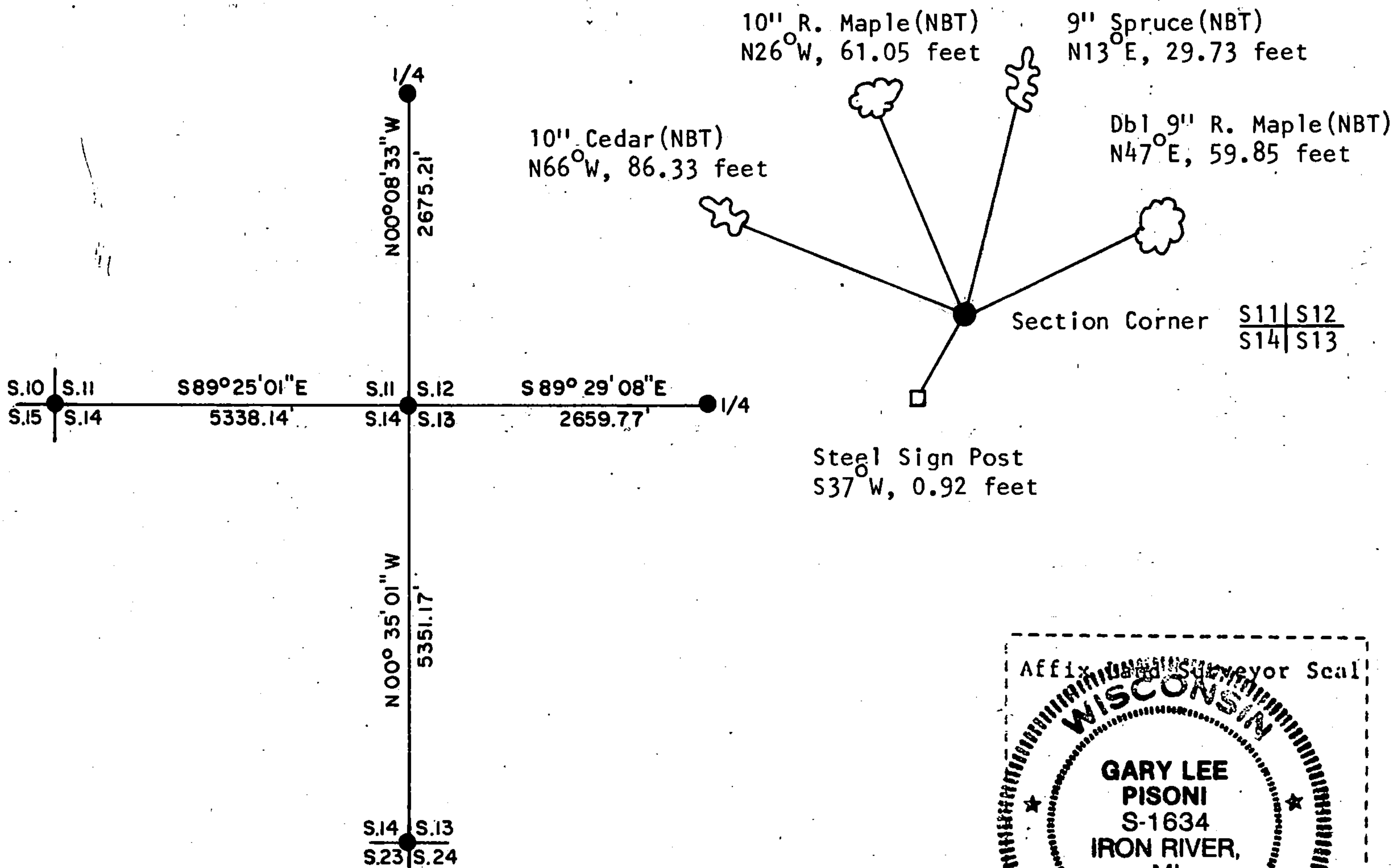
(e) Describe any material discrepancy between the location of the corner as restored or reestablished and the location of that corner as previously restored or reestablished by distance and direction. Show the discrepancy on the plan view drawing under (d), above. Show the distances between the corner as previously restored or reestablished and (1) the corner as restored or reestablished, and (2) to at least 2 of the witness monuments shown on the drawing in (d), above.

See drawing below.

(f) Was the corner restored through acceptance of (1) an obliterated evidence location, or, (2) a found perpetuated location?

Restored through lost corner proportionate methods.

(g&h) Was the corner reestablished through lost corner proportionate methods? If so, show the method, including the directions and distances to other public land survey corners used as evidence or used for proportioning in determining the corner location?
Corner re-established through lost corner proportionate methods.



(i) I, Gary L. Pisoni
(type or print name) certify that the corner location shown on this record was determined by me or under my direction and control and that this U.S. Public Land Survey Monument Record is correct and complete to the best of my knowledge and belief.

Gary L. Pisoni August 14, 1991
Signature Date

Survey requested by: Darrell E. Richards 10/30/91
Acting District Ranger Date