

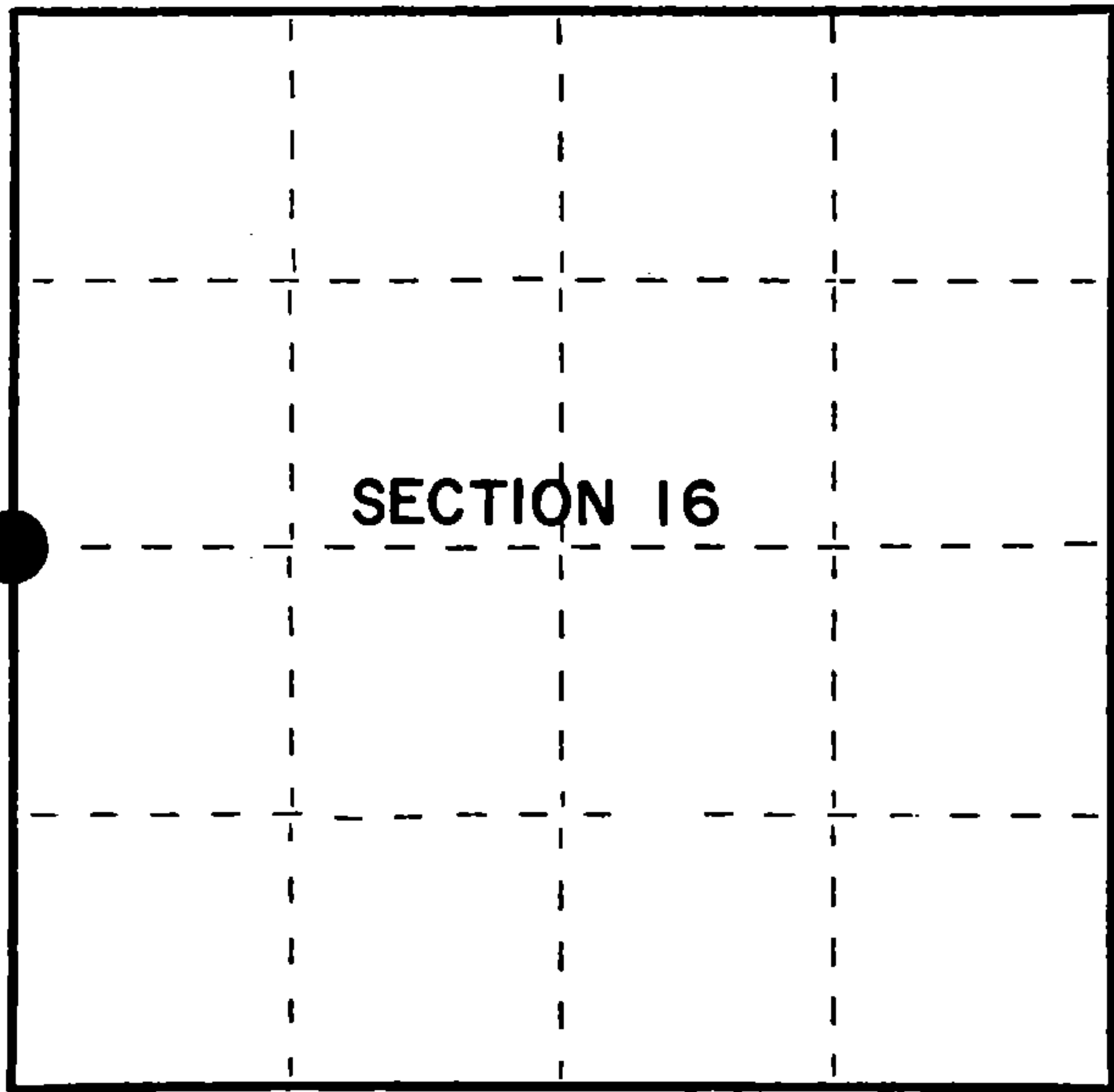
U.S. PUBLIC LAND SURVEY MONUMENT RECORD

Index No. L-9

State of Wisconsin }
County of Forest } ss.

I, Gary L. Pisoni, do hereby
certify that on the 1st day
of March, 1993, I found
evidence of the West Quarter
corner of Section 16
Township 37, North, Range
13 East, Fourth Principal Meridian,
as described hereon; and that from this evidence
I established a new monument and accessories
as described hereon to perpetuate the original
location of this corner.

Resident witnesses:



● = Corner monument restored.

History of original corner establishment:
Original Government Survey in 1865 by J.L. Nowlin. North between Sections 16 and 17,
at 40.00 chains, set Quarter Section Post, from which the following bear;

Birch	10"	N55°W	3 lks.
Sugar	15"	N25°E	15 lks.

Description of corner evidence found:

No original corner evidence was recovered. No other corner evidence was recovered.

According to USFS Form #874 dated 1936-37, the corner position is located in the
center-line of a North-South Woods road.

I re-established the corner position in the center-line of the North-South woods road,
and at proportionate distance between the Northwest and Southwest Section Corners of
Section 16.

Description of monument and accessories I established to perpetuate the original location of this corner.

At the corner position, set a 2½ inch diameter aluminum pipe monument, 3 feet long,
6 inches below the road surface, with an aluminum cap stamped; T37N R13E, 1/4, S16,
S17, 1993, S-1634. From which the following new blazed and scribed bearing trees bear;
(Measurements taken to a nail in side of tree)

Basswood	14"	N75°E	54.97 feet
Basswood	11"	S77°E	56.29 feet
Sugar Maple	8"	S45°E	56.00 feet
Steel Sign Post		N85°W	12.40 feet

Dated at Iron River, MI, ~~Wis.~~ this 22nd day of April, 1993

Signature Gary L. Pisoni Title Land Surveyor Registration No. S-1634
(County Surveyor, Registered Land Surveyor, or other duly authorized official)

Office of Register of Deeds, County of Forest, I hereby certify that the within
instrument was filed in this office for record on the 12th day of August, 1993
at 1:25 o'clock P M.

(Register of Deeds)
By Jack Chitt Deputy

FORM NO. 985-A

K.C. Miller Company

Stock No. 26273
DOCUMENT NUMBER
148154

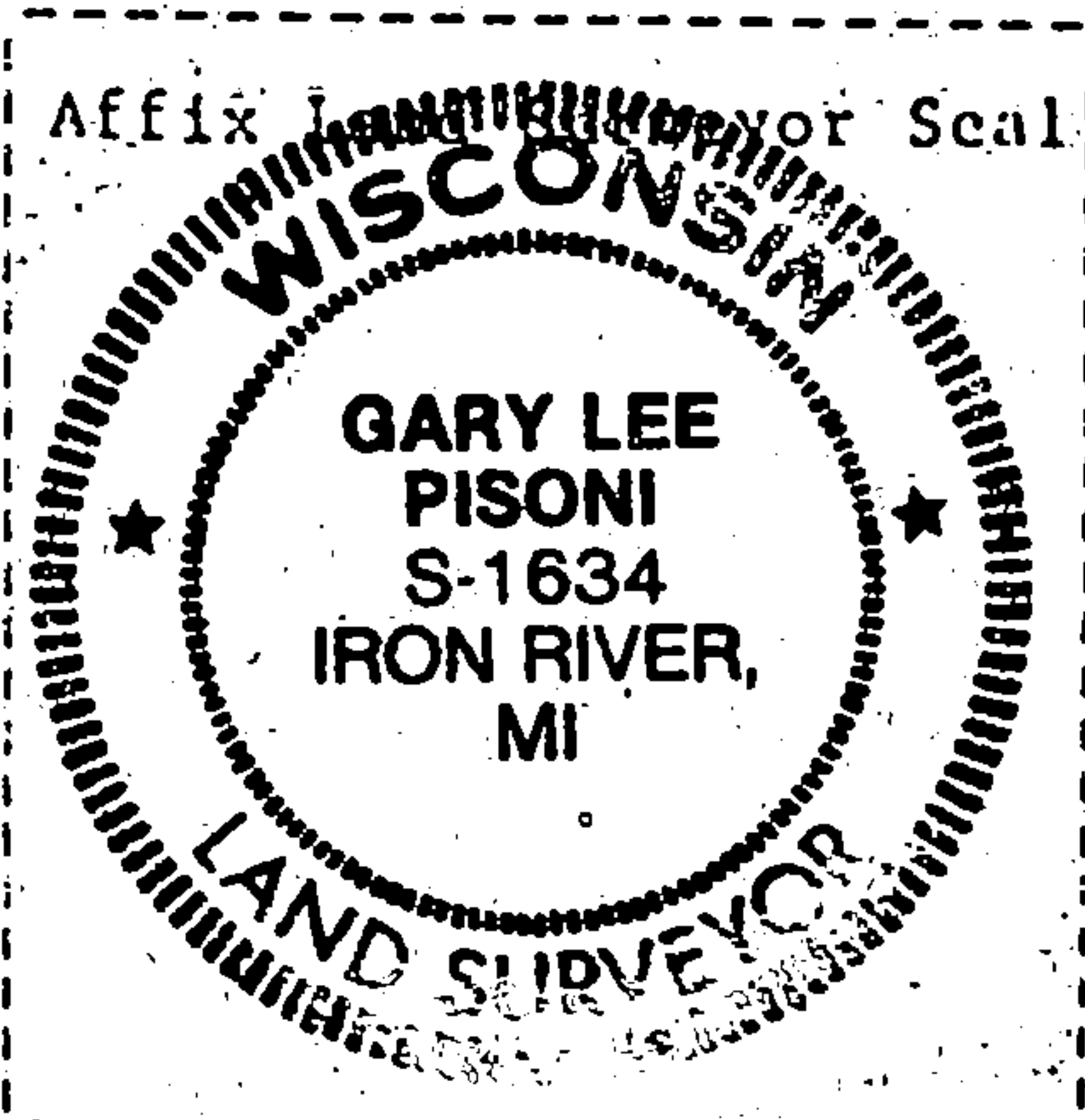
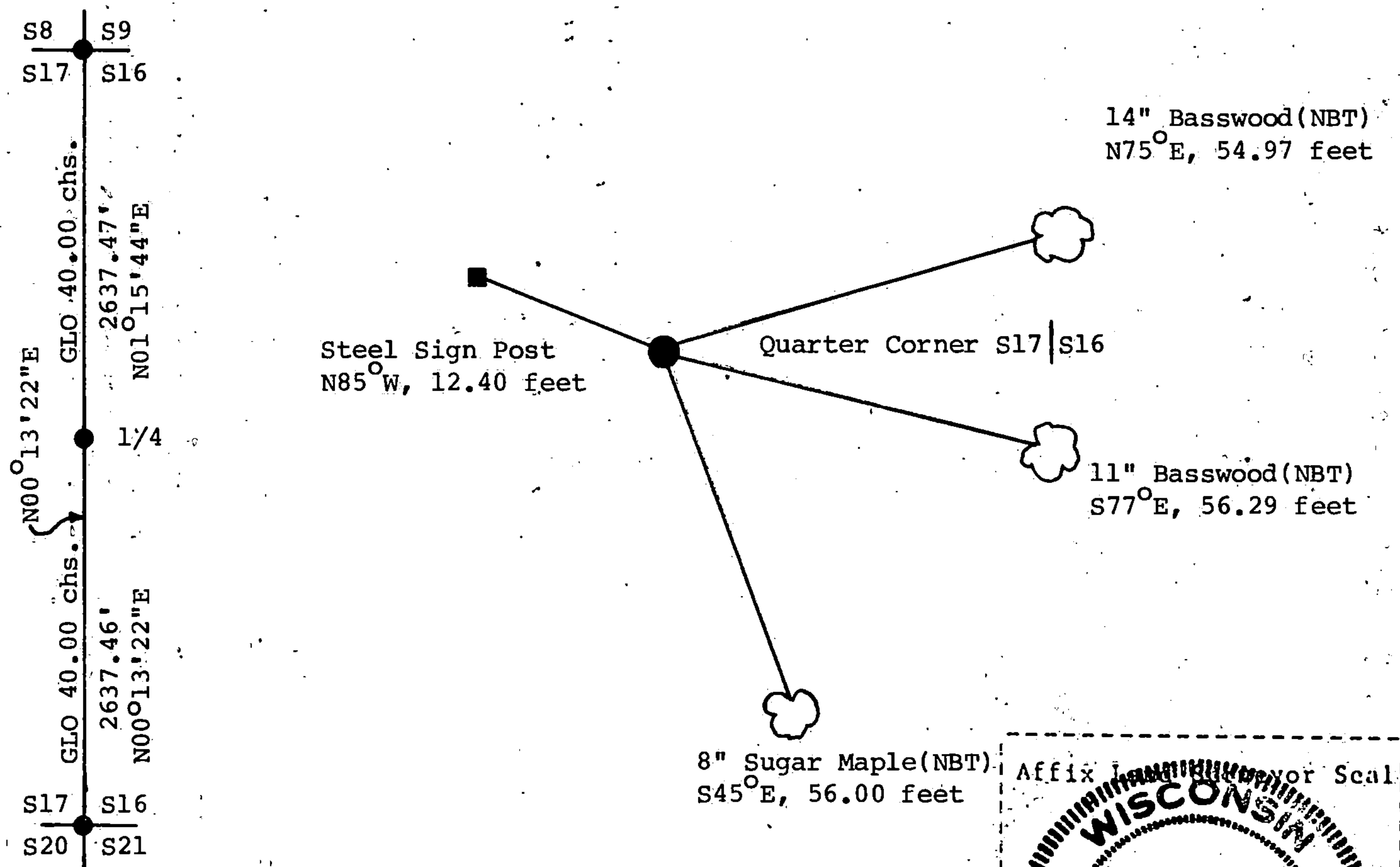
43713172000

(e) Describe any material discrepancy between the location of the corner as restored or reestablished and the location of that corner as previously restored or reestablished by distance and direction. Show the discrepancy on the plan view drawing under (d), above. Show the distances between the corner as previously restored or reestablished and (1) the corner as restored or reestablished, and (2) to at least 2 of the witness monuments shown on the drawing in (d), above.

See drawing below.

(f) Was the corner restored through acceptance of (1) an obliterated evidence location, or, (2) a found perpetuated location?

(g&h) Was the corner reestablished through lost corner proportionate methods? If so, show the method, including the directions and distances to other public land survey corners used as evidence or used for proportioning in determining the corner location?
Re-established through lost corner proportionate methods.



(i) I, Gary L. Pisoni
(type or print name) certify that the corner location shown on this record was determined by me or under my direction and control and that this U.S. Public Land Survey Monument Record is correct and complete to the best of my knowledge and belief.

Signature

Date

Survey requested by:

District Ranger

Date