

U.S. PUBLIC LAND SURVEY MONUMENT RECORD

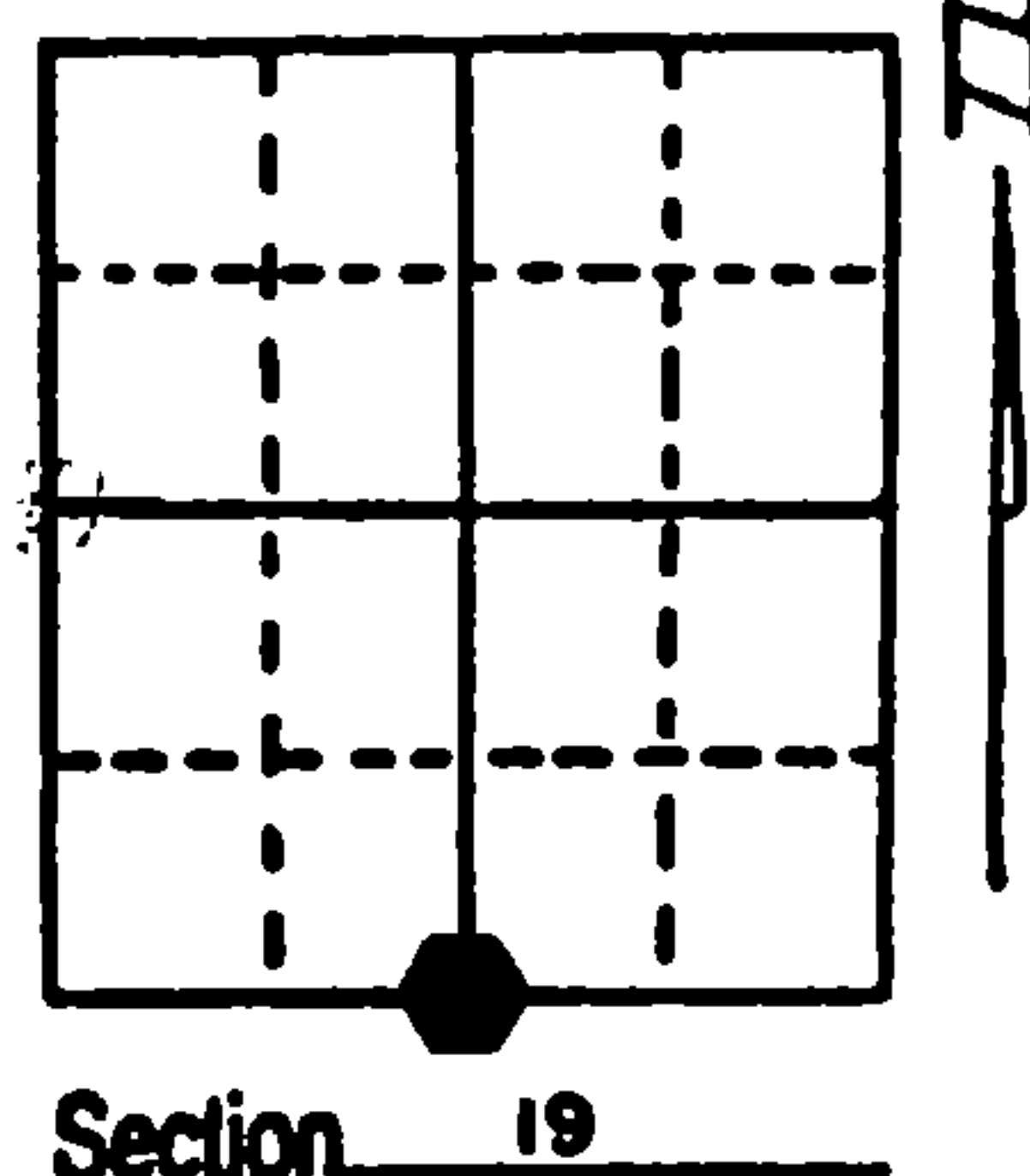
Note: This form is intended and designed to fulfill all requirements of Wisconsin Administrative Code, Chapter A-E 7.08 U.S. Public Land Survey Monument Record (3) (a) (b) (c) (d) (e) (f) (g) (h) (i). An additional sheet may be added if necessary to conform with said requirements.

(a) Corner location: Township 37 North

Range 13 East/West

Town/City/Village ARGONNE

County FOREST



(b) (f) (g) (h) Description of monument found at this corner and if it was accepted, state all evidence (material, testimonial, occupational, plats, records, other monuments) used as a basis for accepting. If not accepted or if nothing was found, state evidence used as basis for establishing location. If reestablished through lost corner proportionate methods, indicate all monuments, distances and directions used to establish. Indicate type of monument found or set and sign post.

Gov't- Set 1/4 post and made the following B.T.'s: Sugar 12" 66° E 15 links; Sugar 10" S 26° W 10 links.

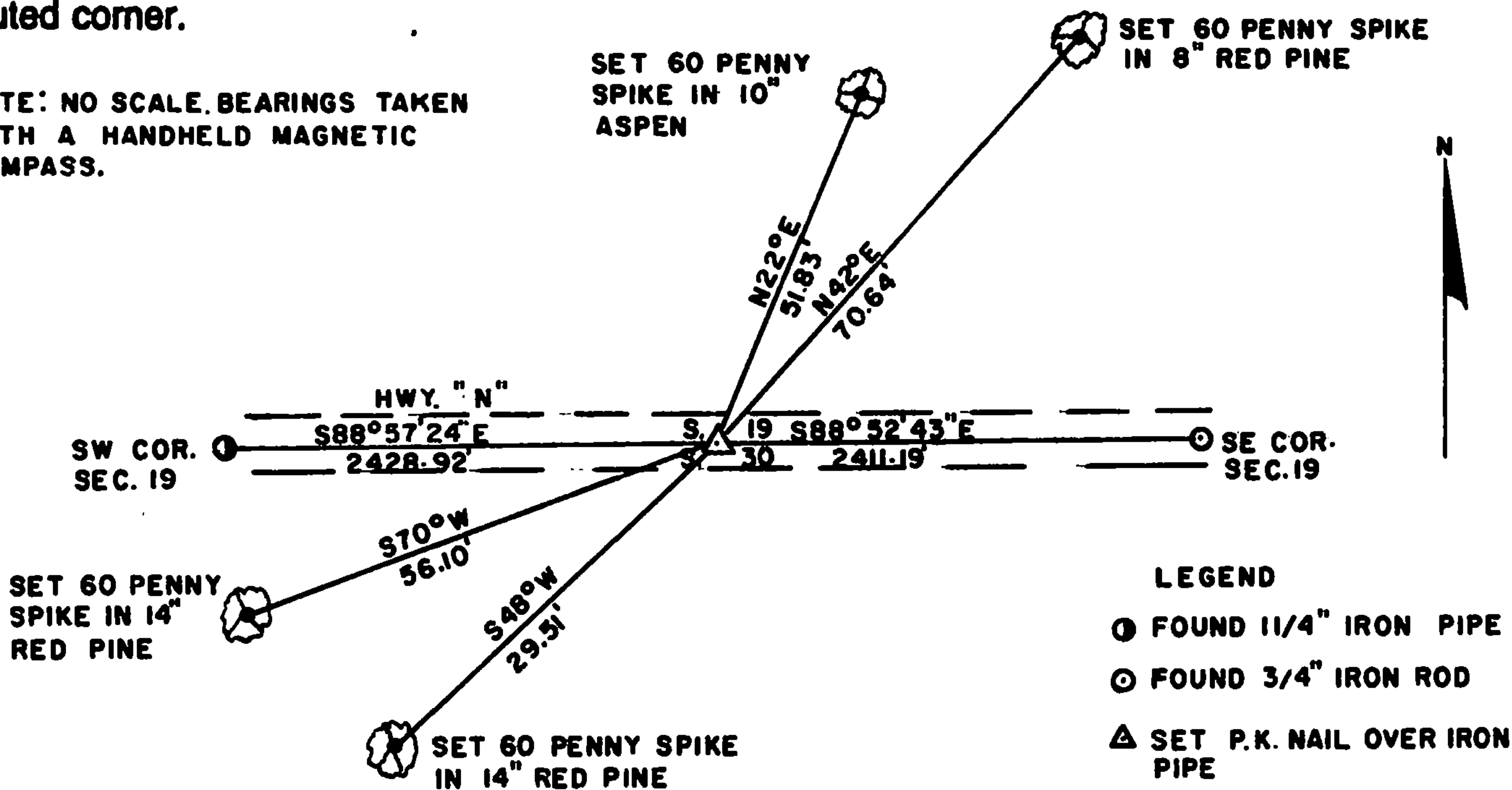
1997- William E. Badow set P.K. nail and witnessed as shown below.

REGISTER'S OFFICE
Forest County, Wis.
Received for record this 18 day
of November A.D., 2002 at
9:00 o'clock A M, and recorded
in Vol. Corner Restoration
page R 3

Kay Swanson Deputy
Register of Deeds

(c) (d) (e) Plan view of corner with ties to at least 4 witness monuments. If in disagreement with previously established corner, show the distances between the two corners and also indicate the ties to the disputed corner.

NOTE: NO SCALE. BEARINGS TAKEN
WITH A HANDHELD MAGNETIC
COMPASS.



(i) I, William E. Badow

(type or print name) certify that the corner location on this record was determined by me or under my direction and control and that this U.S. Public Land Survey Monument Record is correct and complete to the best of my knowledge and belief.

William E. Badow

Signature

11-13-02

Date



Index No. R 3

43713190020

Stamp