



Document Number
184226

Stock No. 26273

U.S. PUBLIC LAND SURVEY MONUMENT RECORD

(As Required by WI Adm. Code)

History of original corner establishment and subsequent restorations and descriptions of any record, monument, occupational, testimonial or other evidence considered:

1865 - James Nowlin, set original corner post and made the following B.T.'s:

Lind, 14", S 13° E, 10 lks., 6.60 feet.
Lind, 12", N 77° E, 45 lks., 29.70 feet.

1921 - I.R. Ritter identified corner on subdivision map of Section 23, T37N, R13E.

Aspen, 4", N 3° E, 199 lks., 131.34 feet.
Aspen, 4", S 8° W, 62 lks., 40.92 feet.

2002 - Devon Vanden Heuvel, RLS established section corner using local evidence to the West and using dimensions from the Plat of the Village of Wall and is shown on his survey map dated 06/18/02, project #366. The section corner had been set with a 3/4" X 24" iron rod.

2004 - Michael A. Trembl, RLS found no evidence of the original corner or iron rod set in 2002. I restored the section corner using Vanden Heuvel's survey map and the dimensions from the Plat of the Village of Wall. I set a 2" X 30" Forest County Aluminum Pipe Monument for the section corner.

REGISTER'S OFFICE
Forest County, Wis.

Received for record this 2nd day
of July A.D., 2004 at
3:25 o'clock P.M. and recorded
in Vol. Corner Restoration
page R-17

Kay Swanson, Deputy
Register of Deeds

Corner was: (Check All That Apply)

- ☒ Restored through acceptance of an obliterated evidence location.
☐ Restored through acceptance of a found perpetuated location.
☐ Considered a lost corner and reestablished through lost corner proportionate methods (include a plan view drawing showing distances and directions to other Public Land Survey Corners used for proportioning and determining the corner location).
☐ Restored or reestablished in a location that differs from a previous restoration or reestablishment (include a plan view drawing and indicate what was set and/or found).

Describe the monument and accessories used to perpetuate the location of this corner (Include a plan view drawing and indicate what was set and/or found).

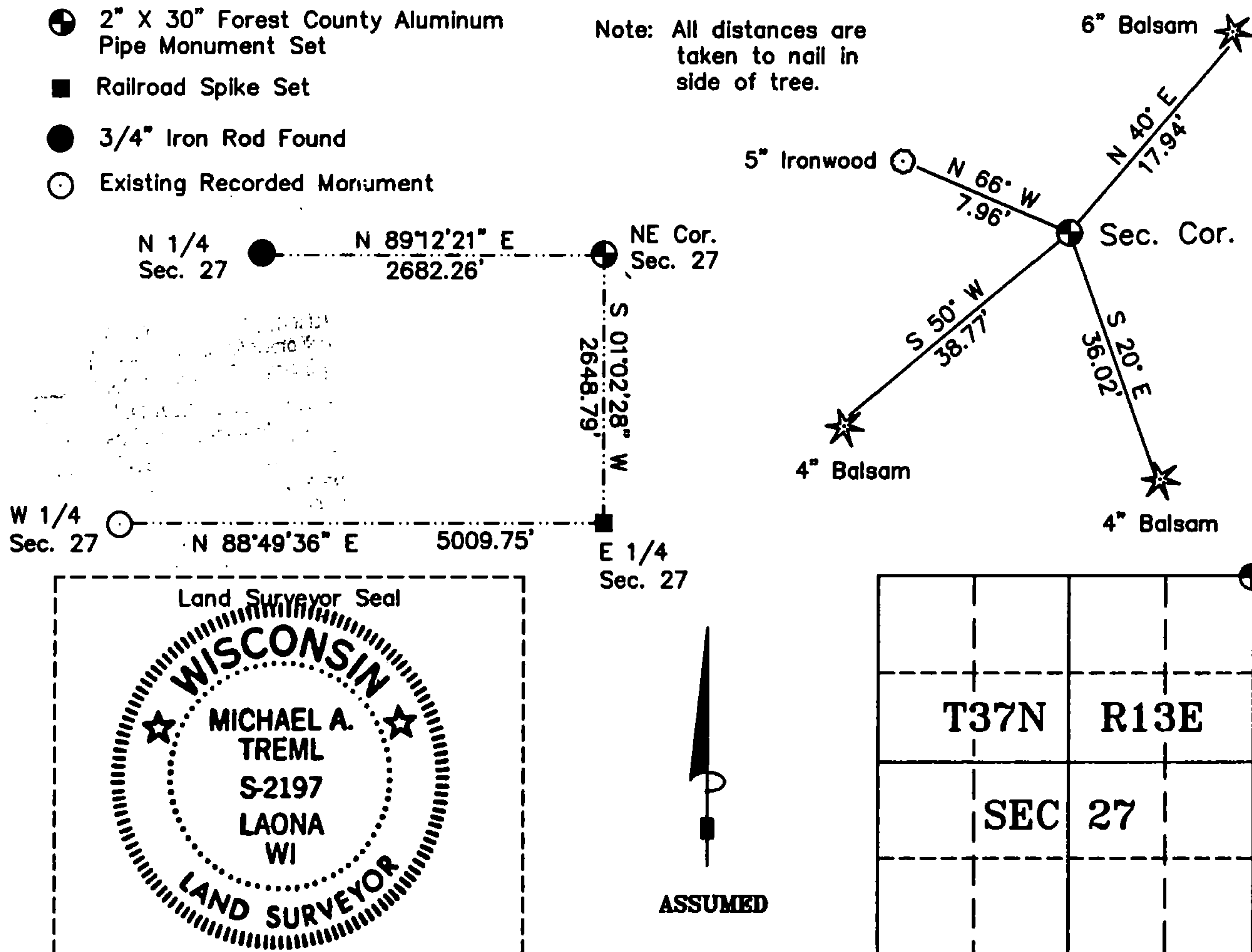
⊕ 2" X 30" Forest County Aluminum Pipe Monument Set

■ Railroad Spike Set

● 3/4" Iron Rod Found

○ Existing Recorded Monument

Note: All distances are taken to nail in side of tree.



I, Michael A. Trembl, RLS
(type or print name) certify that the corner location shown on this record was determined by me or under my direction and control and that this U.S. Public Land Survey Monument Record is correct and complete to the best of my knowledge and belief.

Michael A. Trembl 7/1/04
Signature Date

The Northeast corner of
Section 27 T. 37 N., R. 13 E.
Forest County, WI

Index No. R-17

4371322.0000

R-17