



Document Number

Stock No. 26273

184225

## U.S. PUBLIC LAND SURVEY MONUMENT RECORD

(As Required by WI Adm. Code)

History of original corner establishment and subsequent restorations and descriptions of any record, monument, occupational, testimonial or other evidence considered:

1865 - James Nowlin, set original corner post and made the following B.T.'s:

Birch, 15", N 52° E, 25 lks., 16.50 feet.

Hemlock 12", S 50° W, 50 lks., 33.00 feet.

1921 - I.R. Ritter, RLS set section corner when subdividing Sec. 24, T37N, R13E made the following B.T.'s:

Cedar, 4", East, 50 lks., 33.00 feet.

Cedar 4", N 45° W, 50 lks., 33.00 feet.

2004 - Michael A. Trembl, RLS found no evidence of Ritter's corner or the original corner. I restored corner using Ritter's subdivision map and found corners to the east.

Positioned section corner by doubling distance from S 1/4 of Sec. 24 west thru the W 1/16 corner between sections 24 & 25. Corner falls 1.8 feet West of Asphalt Road Centerline.

Set a railroad spike for section corner and reference monument (R.M.).

Corner was: (Check All That Apply)

- ☒ Restored through acceptance of an obliterated evidence location.  
☐ Restored through acceptance of a found perpetuated location.  
☐ Considered a lost corner and reestablished through lost corner proportionate methods (include a plan view drawing showing distances and directions to other Public Land Survey Corners used for proportioning and determining the corner location).  
☐ Restored or reestablished in a location that differs from a previous restoration or reestablishment (include a plan view drawing and indicate what was set and/or found).

Describe the monument and accessories used to perpetuate the location of this corner (include a plan view drawing and indicate what was set and/or found).

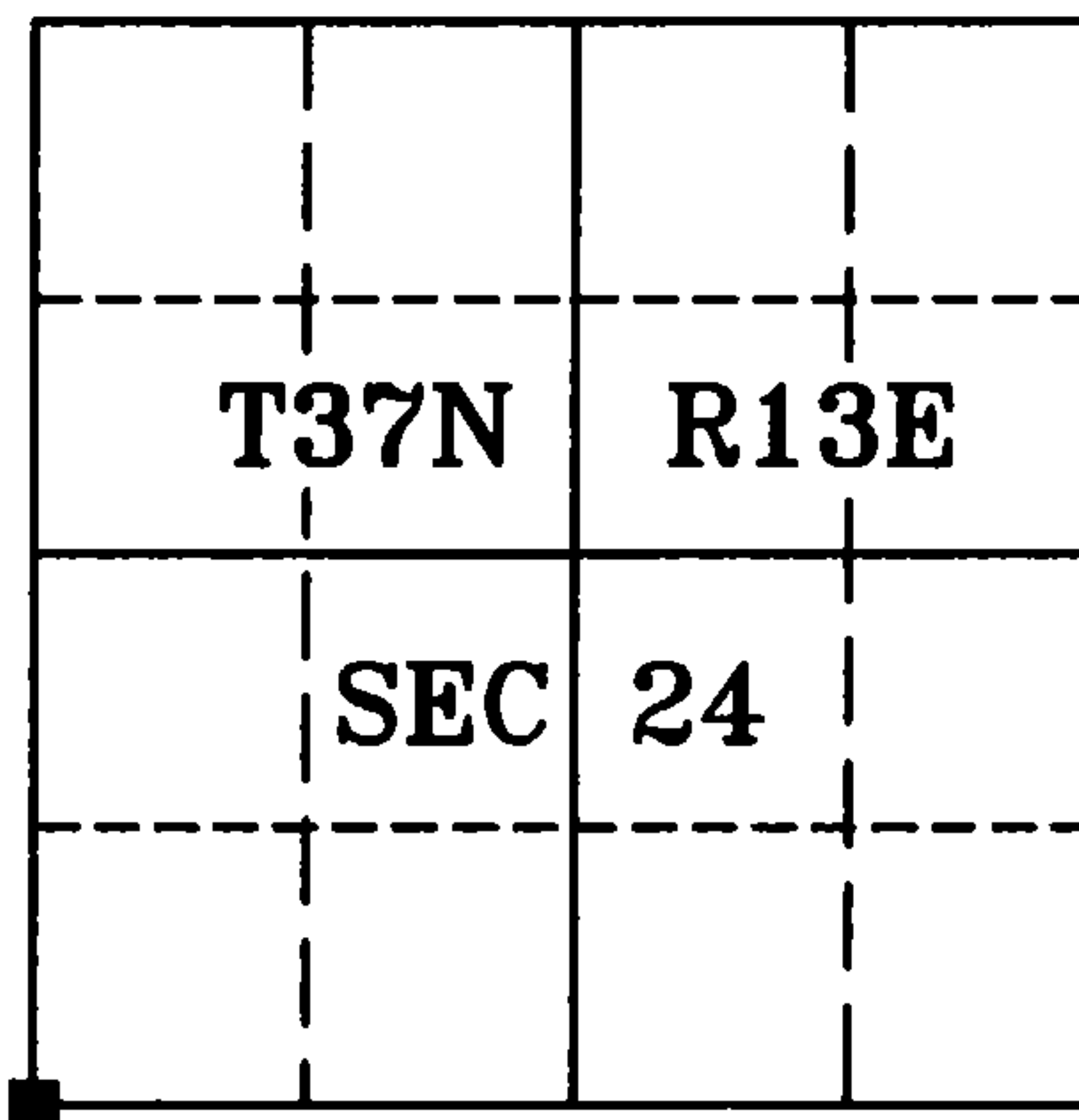
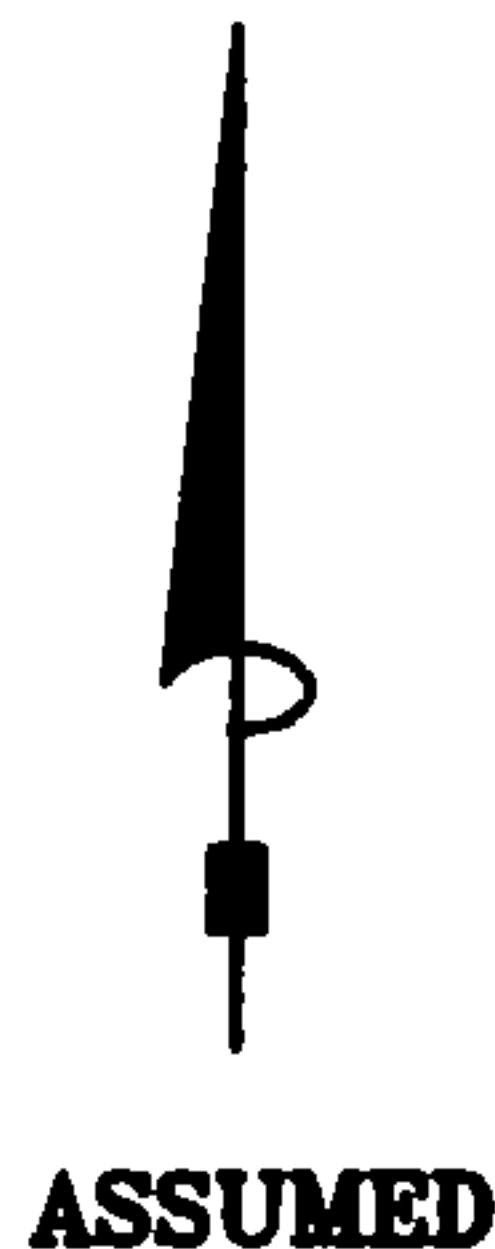
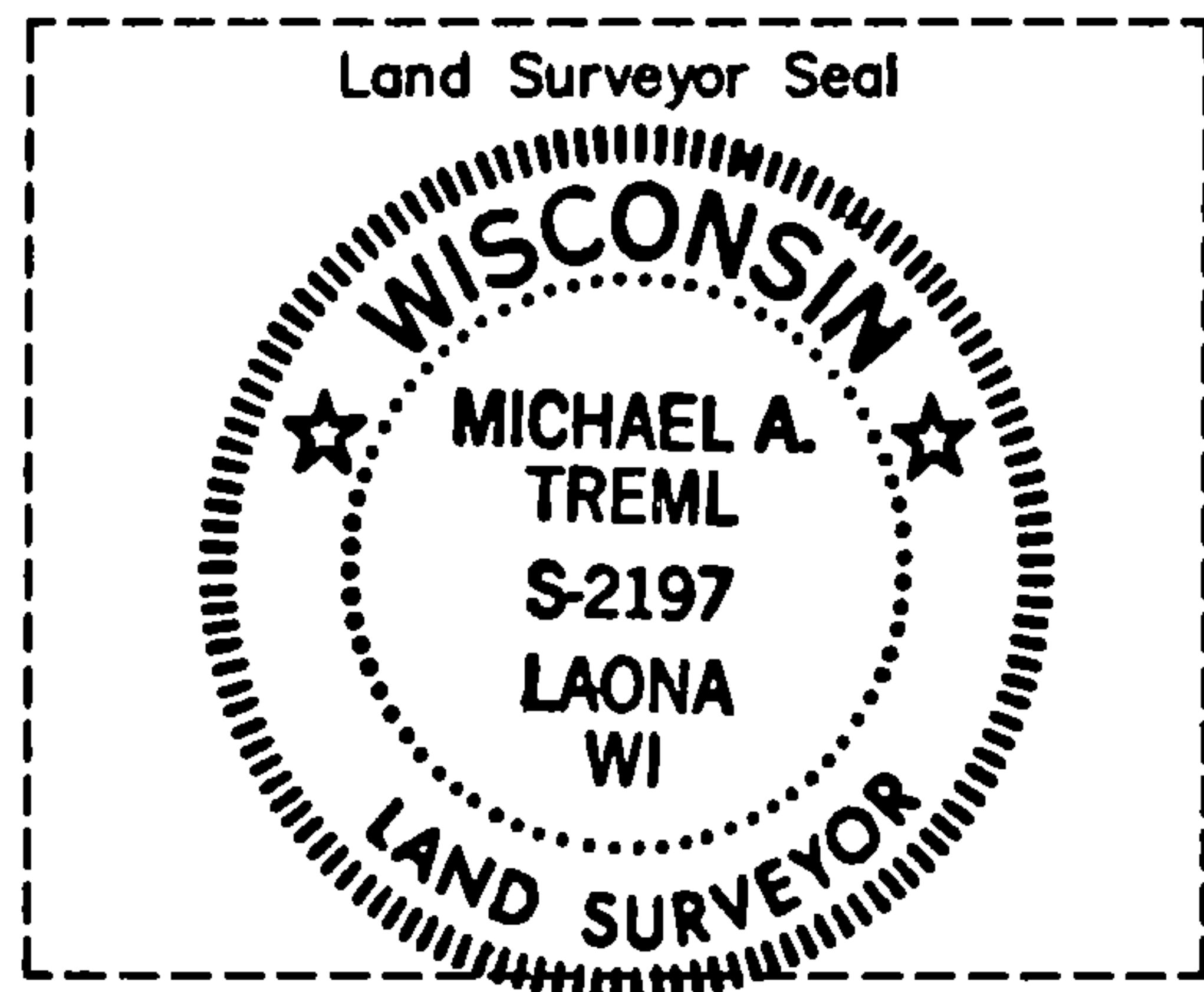
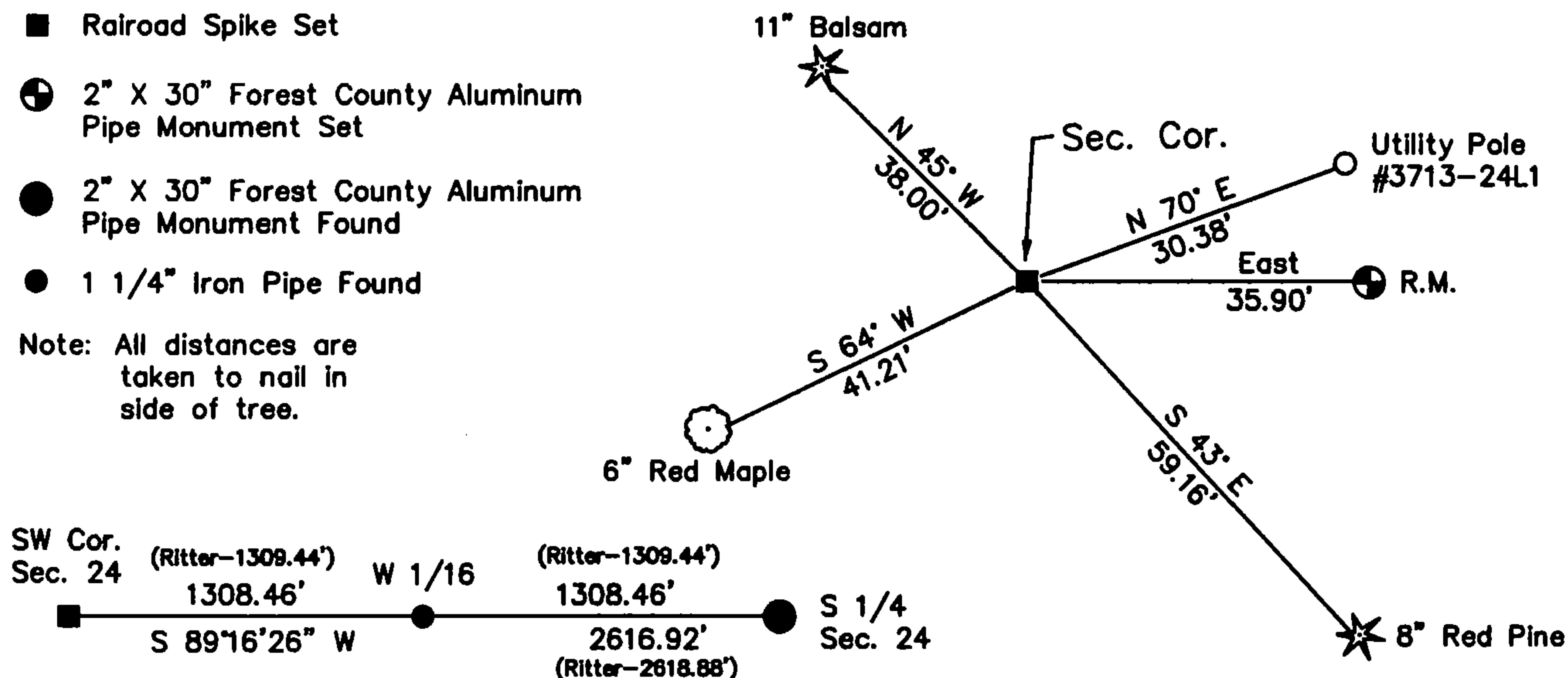
■ Railroad Spike Set

⊙ 2" X 30" Forest County Aluminum Pipe Monument Set

● 2" X 30" Forest County Aluminum Pipe Monument Found

● 1 1/4" Iron Pipe Found

Note: All distances are taken to nail in side of tree.



I, Michael A. Trembl, RLS

(type or print name) certify that the corner location shown on this record was determined by me or under my direction and control and that this U.S. Public Land Survey Monument Record is correct and complete to the best of my knowledge and belief.

*Michael A. Trembl* 7/1/04  
 Signature Date

The Southwest corner of  
 Section 24 T. 37 N., R. 13 E.  
 Forest County, WI

Index No. R-21

43713230000

R-21

Document Number

184225

REGISTER'S OFFICE }  
Forest County, Wis. }  
Received for record this 2<sup>nd</sup> day  
of July A.D., 2004 at  
3:45 o'clock P.M. and recorded  
in Vol. Corner Restoration  
page R-21  
Kay Swanson, Deputy  
Register of Deeds