

**Stock No. 26273**

184227

# U.S. PUBLIC LAND SURVEY MONUMENT RECORD

(As Required by WI Adm. Code)

History of original corner establishment and subsequent restorations and descriptions of any record, monument, occupational, testimonial or other evidence considered:

**1865 - James Nowlin, set original corner post and made the following B.T.'s:**

Spruce, 6", N 26° E, 20 lks., 13.20 feet.  
Spruce 6", S 70° W, 15 lks., 9.90 feet.

1921 - I.R. Ritter, RLS identified the quarter section corner and made the following B.T.'s:

Tam., 10", N 88° E, 15 1/2 lks., 10.23 feet.  
Fir 5", S 75° W, 18 lks., 11.88 feet.

2004 - Michael A. Trembl, RLS found no evidence of Ritter's corner or the original corner. I restored corner at the intersection of an old fence line extended North from the S 1/4 of Sec. 26 and from the Westerly extension from the Northeast corner of Sec. 26 thru an old fence line post in swamp marked E 1/16 corner. I set a 2" X 30" Forest County Aluminum Pipe Monument for the quarter corner.

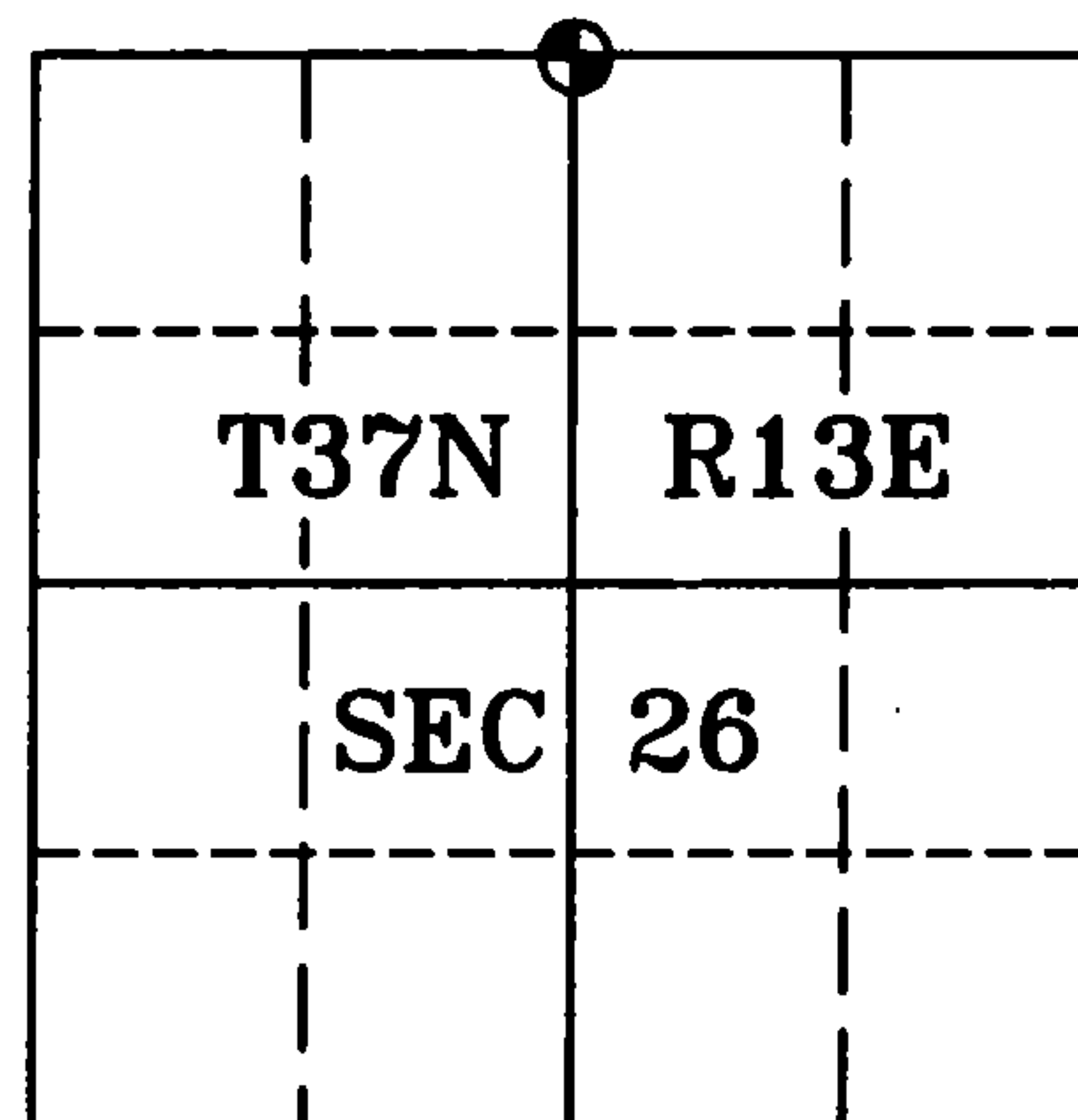
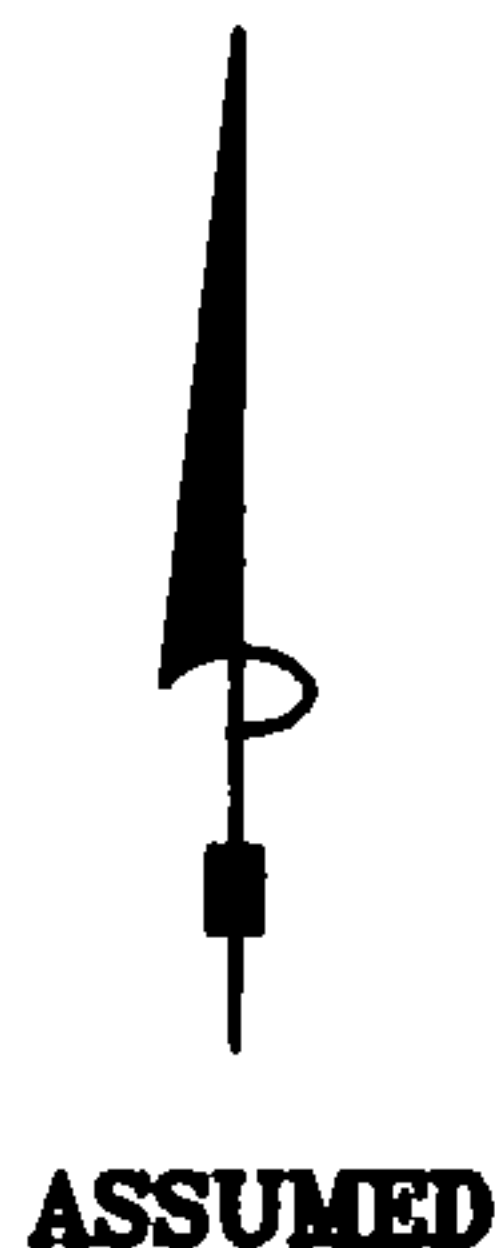
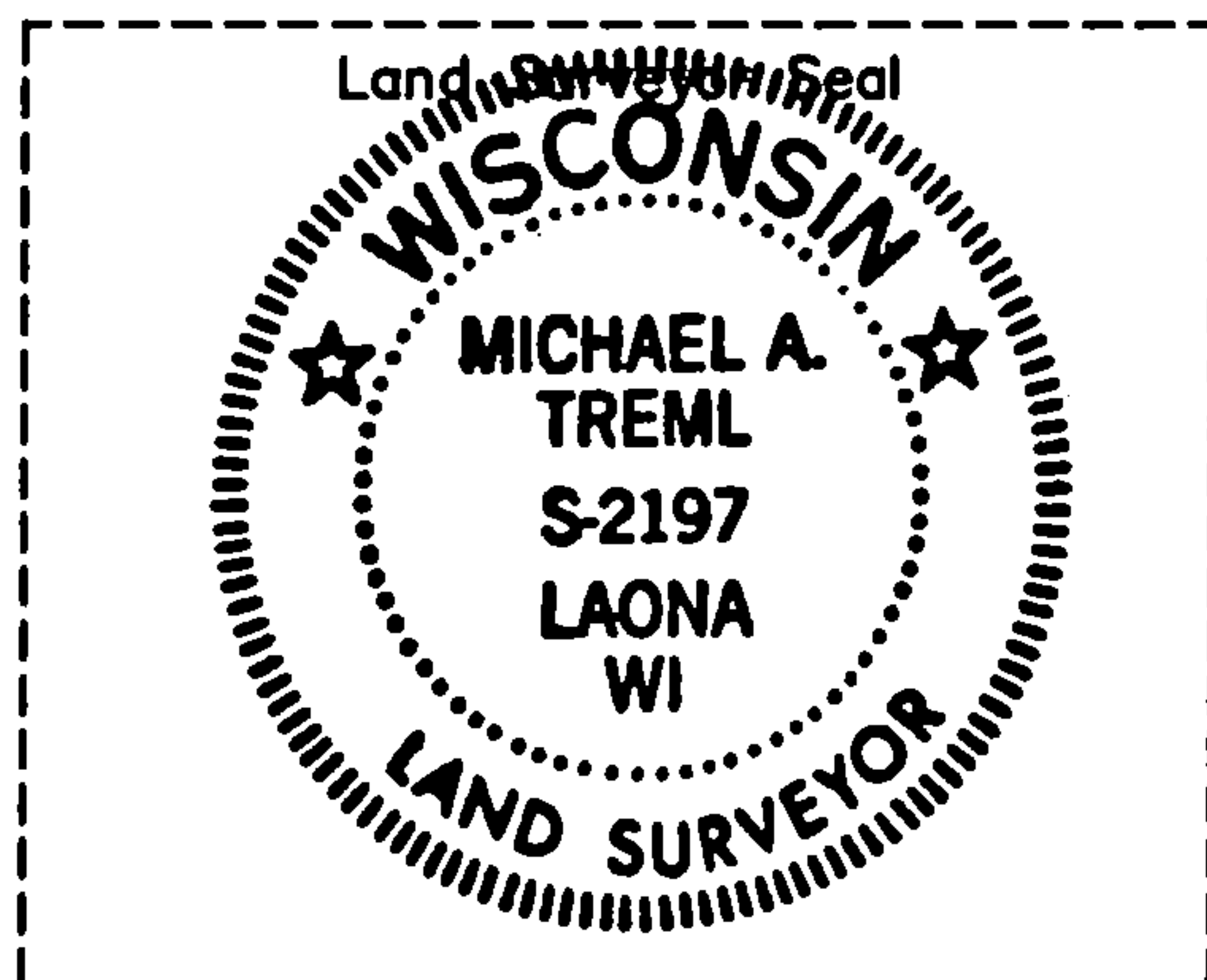
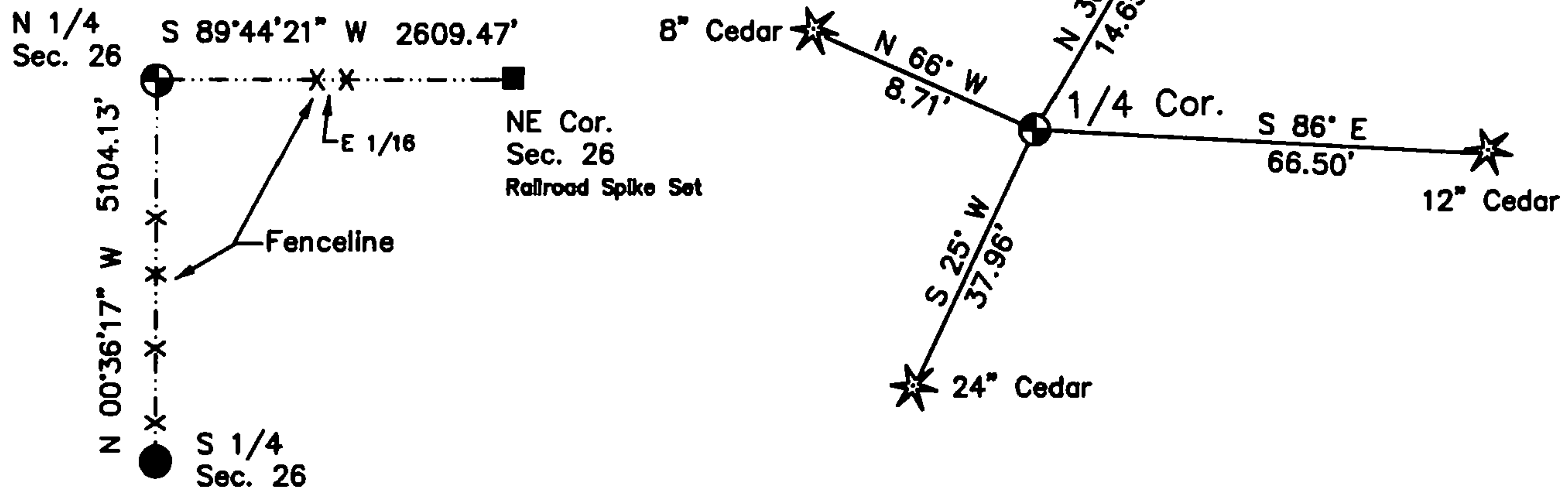
**Corner was: (Check All That Apply)**

- ☒ Restored through acceptance of an obliterated evidence location.
- ☐ Restored through acceptance of a found perpetuated location.
- ☐ Considered a lost corner and reestablished through lost corner proportionate methods (include a plan view drawing showing distances and directions to other Public Land Survey Corners used for proportioning and determining the corner location).
- ☐ Restored or reestablished in a location that differs from a previous restoration or reestablishment (include a plan view drawing and indicate what was set and/or found).

Describe the monument and accessories used to perpetuate the location of this corner (include a plan view drawing and indicate what was set and/or found).

- ☒ 2" X 30" Forest County Aluminum Pipe Monument Set
- ☐ 2" X 30" Forest County Aluminum Pipe Monument Found

**Note:** All distances are taken to nail in side of tree.



Michael A. Trembl, RLS  
(type or print name) certify that the corner location shown on this record was determined by me or under my direction and control and that this U.S. Public Land Survey Monument Record is correct and complete to the best of my knowledge and belief.

Signature Michael A. Lenz Date 7/1/04

The North Quarter corner of  
Section 26 T. 37 N., R. 13 E.  
Forest County, WI

Index No. **R-19**

43713 23 0020

712

Document Number

184227

REGISTER'S OFFICE  
Forest County, Wis.

Received for record this 2nd day  
of July A.D., 2004 at  
3:25 o'clock P.M. and recorded  
in Vol. Corner Restoration  
page R-19

Kay Swanson, Deputy  
Register of Deeds