

DOCUMENT NUMBER  
142068

FORM 985 H. C. MILLER CO., MILWAUKEE

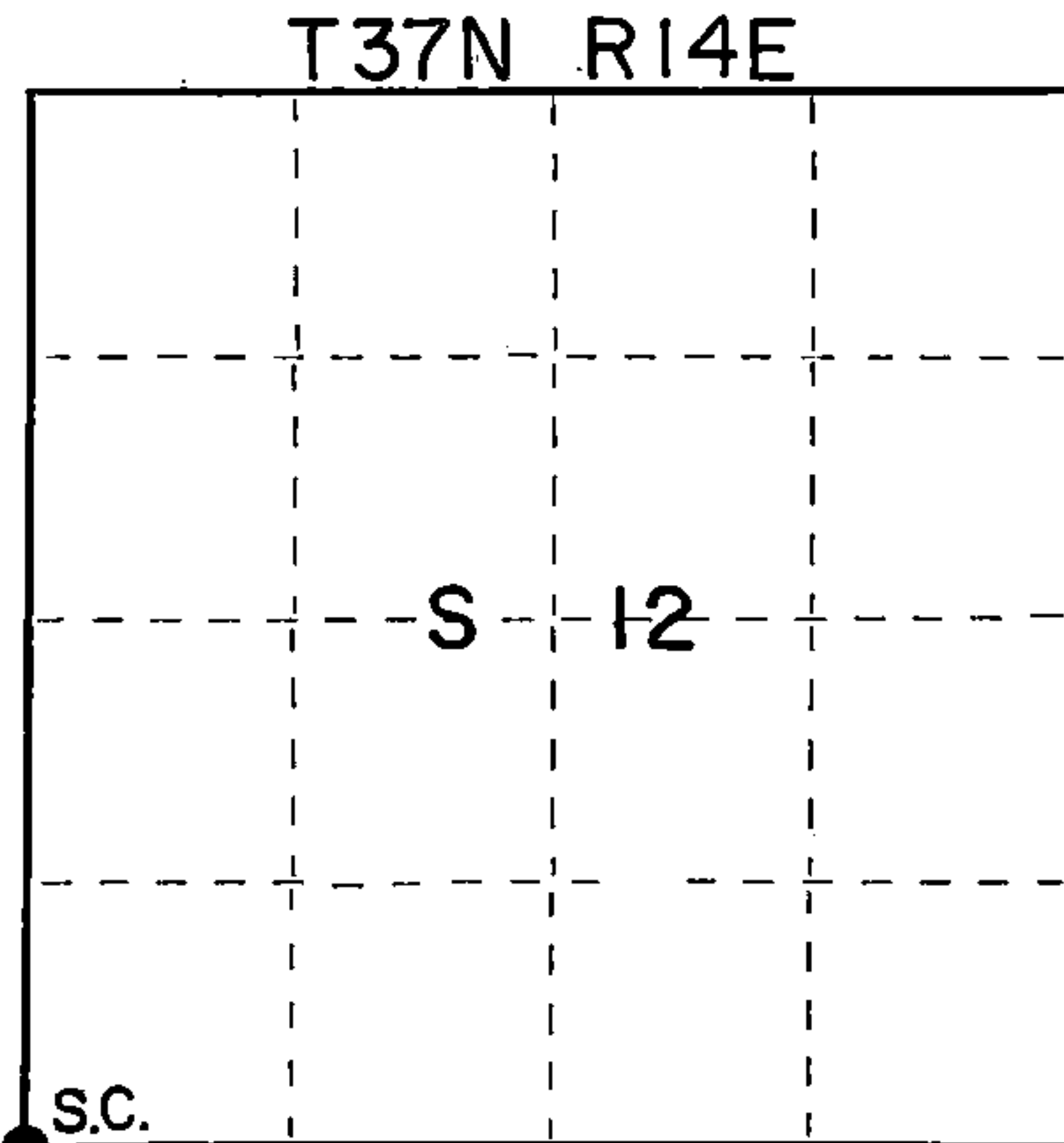
State of Wisconsin }  
County of Forest } ss.

I, Glen Barker, do hereby  
certify that on the 6th day  
of December, 1990, I found  
~~established~~ the Section  
corner of Sections 11-12-13-14  
Township 37, North, Range  
14 East, Fourth Principal Meridian,  
as described hereon; and that from this evidence  
I established a new monument and accessories  
as described hereon to perpetuate the original  
location of this corner.

Resident witnesses:

N. Spiess

J. Spiess



○ = Corner monument restored.

CERTIFIED LAND CORNER RESTORATION  
U.S. PUBLIC LAND SURVEY RECORD

History of original corner establishment:

Original corner established by J.L. Nowlin, Gov't Deputy Surveyor.

Description of corner evidence found:

Re-established Section Corner on basis of survey stations on distances from  
original Chicago & Northwestern Railroad plans.

Corner sets N83.02'50"W, 5480.0' of Section corner 12-13-7-18, T37N, R14 & 15E,  
distance recorded on Railroad plan.

No evidence of previous corner.

Description of monument and accessories I established to perpetuate the original location of this corner.

Set a 1" Forest County aluminum pipe with 2-1/2" alloy cap stamped. Monument  
projects 6" above ground.

Marked N.B.T.s

Triple Maple	11"	N8E	10.95'
Red Maple	6"	S34W	32.10'
Cedar	6"	S46E	55.19'
Red Maple	10"	S85W	15.24'

Old Location tag 20.0' North.

T37N R14E

S11	S12
S14	S13

S-1682  
1990  
Forest County

Dated at Rhinelander, Wis., this 14th day of February, 1991

Signature \_\_\_\_\_ Title Registered Land Surveyor Registration No. S-1682  
(County Surveyor, Registered Land Surveyor, or other duly authorized official)

Office of Register of Deeds, County of Forest, I hereby certify that the within  
instrument was filed in this office for record on the 19th day of June, 1991  
at 1:20 o'clock P. M.

Paul Aschenbrenner  
(Register of Deeds)

By \_\_\_\_\_ Deputy

Index No. J-21

43714110000

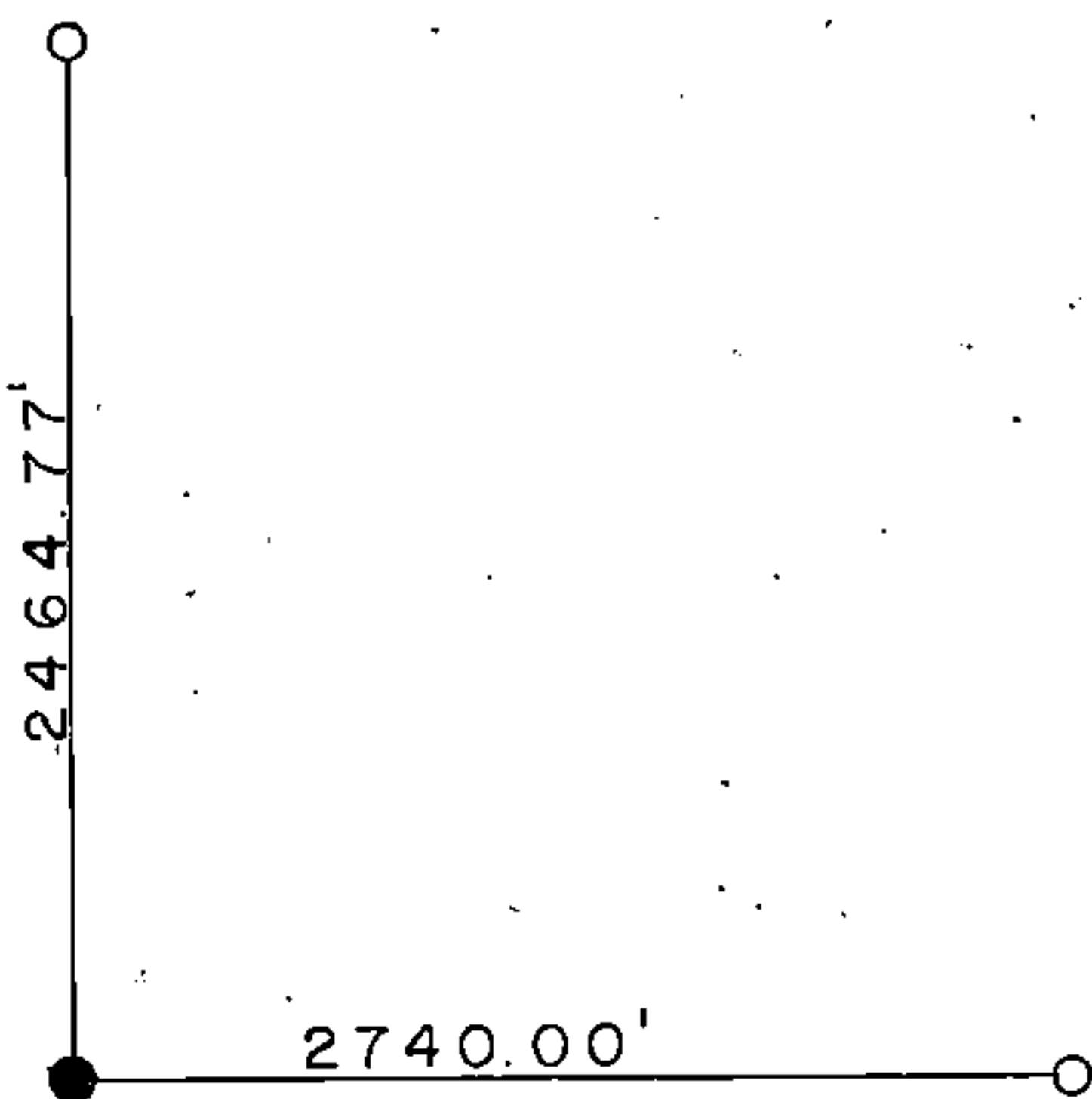
e) Describe any material discrepancy between the location of the corner as restored or reestablished and the location of that corner as previously restored or reestablished by distance and direction. Show the discrepancy on the plan view drawing under above. Show the distances between the corner as previously restored or reestablished and (1) the corner as restored or reestablished, and (2) to at least 2 of the monuments shown on the drawing in (d), above.

(f) Was the corner restored through acceptance of (1) an obliterated evidence location or (2) a found perpetuated location?

Retracement of Railroad plan.

(g&h) Was the corner reestablished through lost corner proportionate methods? If so, the method, including the directions and distances to other public land survey corners and as evidence or used for proportioning in determining the corner location?

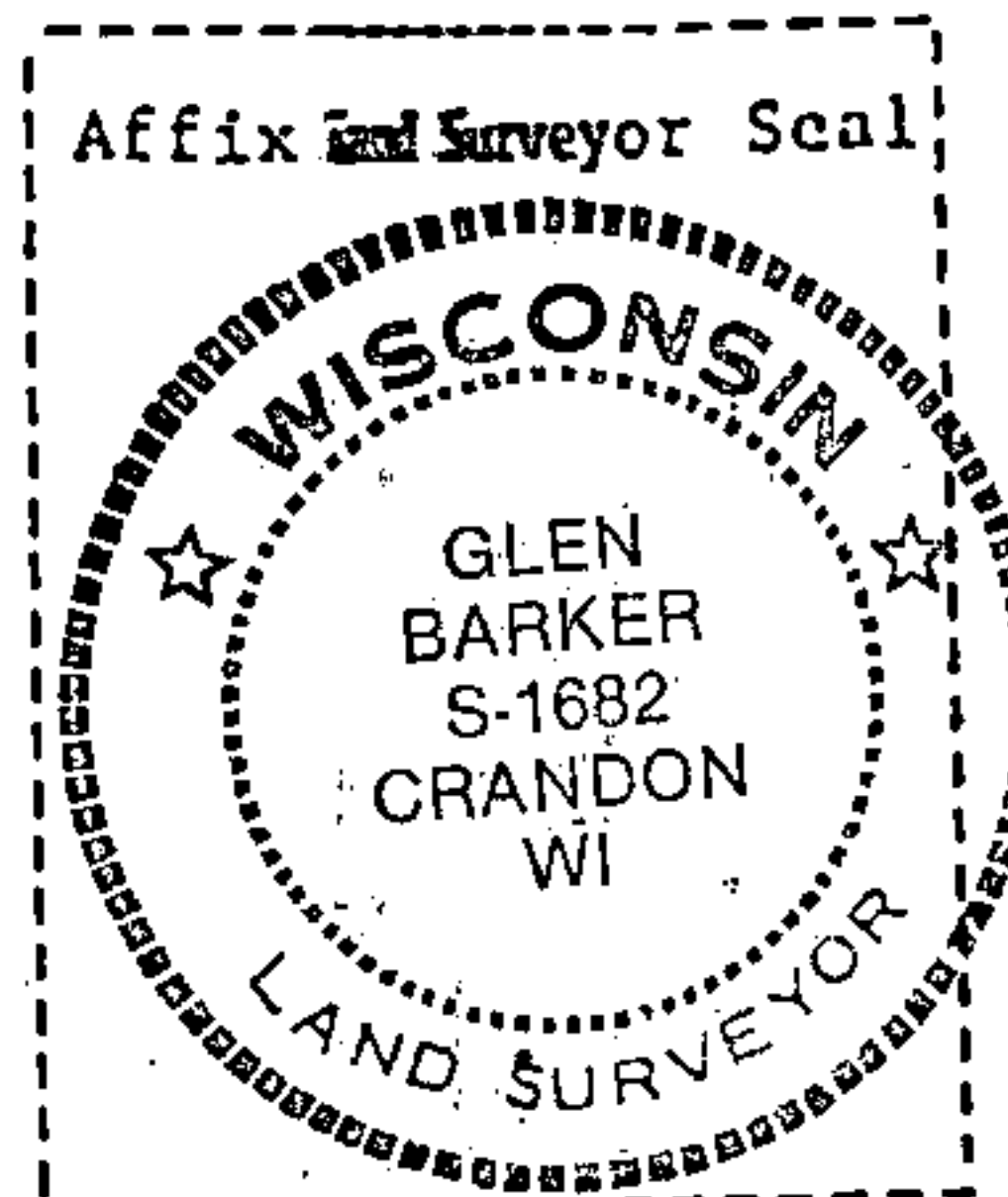
1/4 11 12



12  
13 1/4

11 12 Sec. Cor.  
14 13 Re-est.

Affix ~~and~~ Surveyor Seal



(i) I, Glen Barker  
(type or print name) certify that the corner location shown on this record was determined by me or under my direction and control and that this U.S. Public Land Survey Monument Record is correct and complete to the best of my knowledge and belief.

Signature

Date

6/18/91