

U.S. PUBLIC LAND SURVEY MONUMENT RECORD

Instructions: This record shall show the location of the corner and shall include all of the following nine elements (a through i).

- (a) Identify the corner by reference to the U.S. public land survey system.

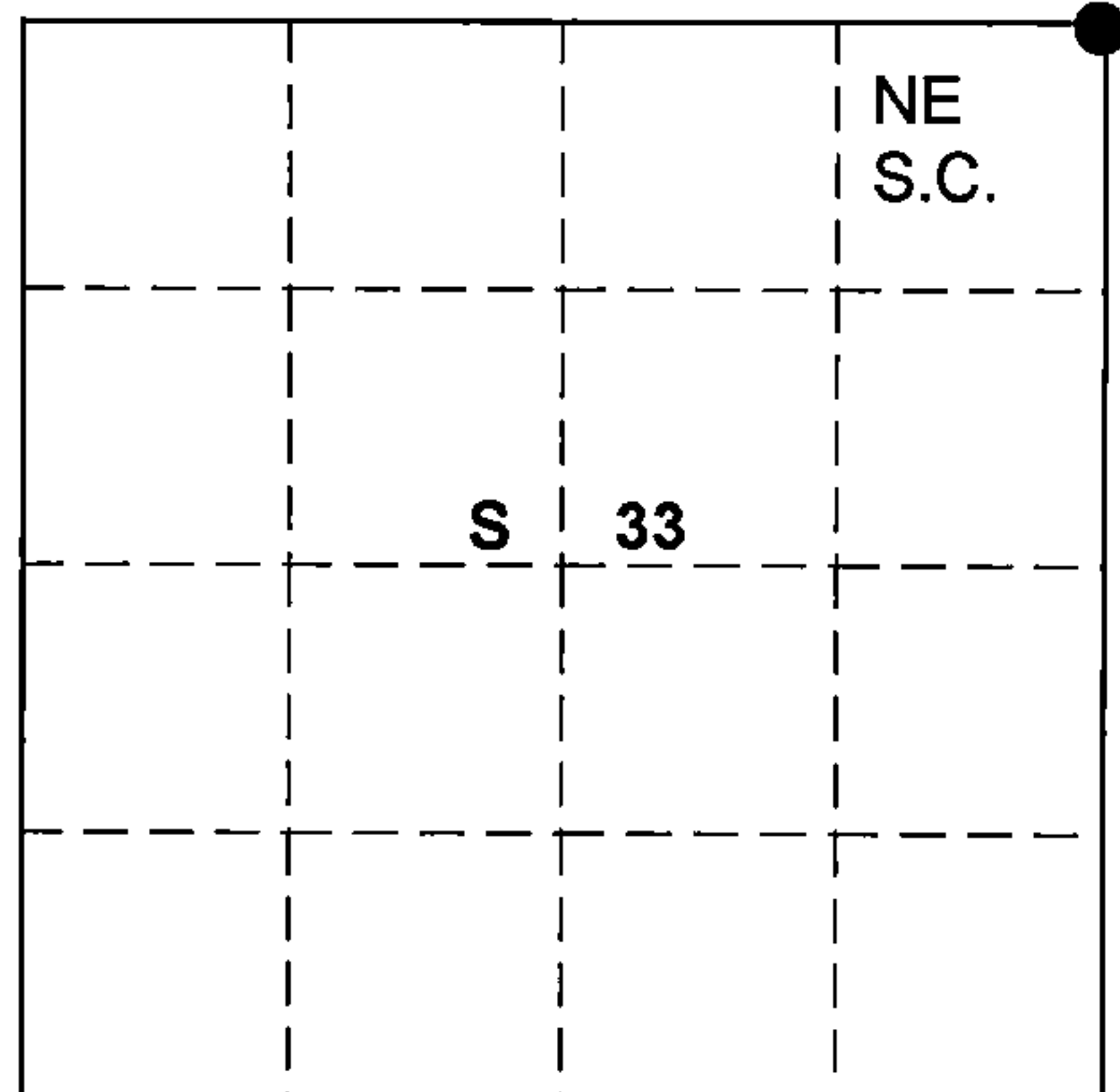
○ = Corner monument restored.

NE SEC. _____ Corner

Sec. 33, T 37 N, R 14 E

Type of Monument:

2-1/4" Aluminum Pipe 3-1/4" Alloy Cap
Buried 12" below ground



FOREST COUNTY

- (b) Describe any record evidence, monument evidence, occupational evidence, testimonial evidence or any other material evidence you considered, and whether the monument was found or placed.

No evidence of original or subsequent corner. A 1947 field map of Consolidated Papers Inc. Placed the corner position in C.T.H. "O" at a culvert.

Retracing and testing the north line of section 34, J.R. Ritters survey of 1921.
Ran from the northeast section corner to the north quarter corner for a bearing of S89 50' 47"W a distance Of 2591.17'. Extended same S89 50' 47"W 2591.17' to a point that fell east 4.0' of payment on C.T.H. "O" and on line with a culvert.

Found this to be the best acceptable method, that harmoniously fits existing conditions and old field maps.

- (c) In the plan view drawing below, provide reference ties to at least 4 witness monuments, or, if the location is within a municipality, to at least 2 witness monuments. (Witness monuments shall be made of concrete, natural stone, iron or other equally durable material).

Describe witness monuments:

- (d) Show a plan view drawing depicting the relevant monuments and reference ties which is sufficient in detail to enable accurate relocation of the corner monument if the corner monument is disturbed. Indicate north.

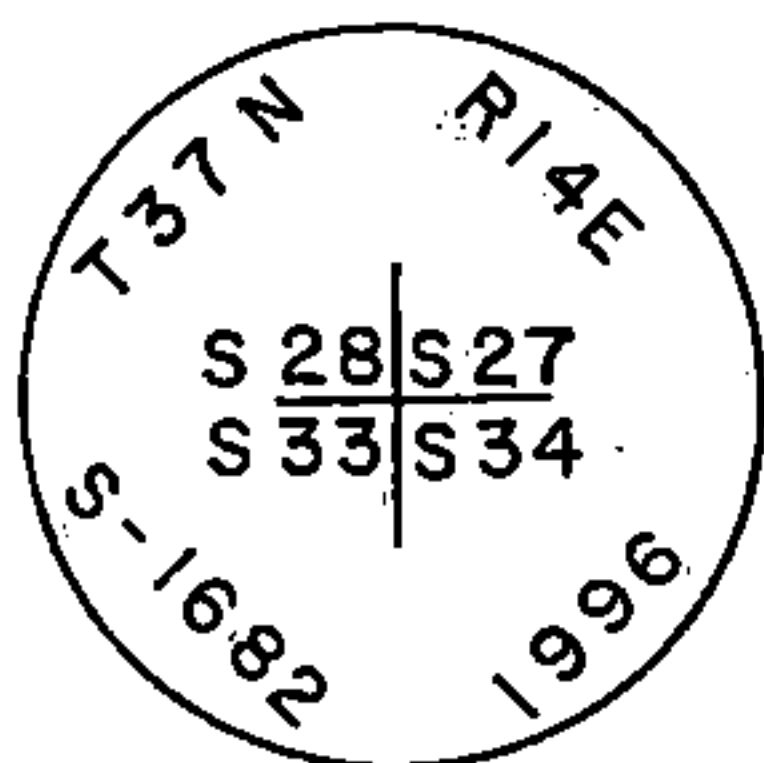
Marked New Bearing Trees

- (1) 14" Tamarack S75W 90.65'
(2) 8" Cedar S37W 103.71'
(3) 8" Cedar S52E 71.90'

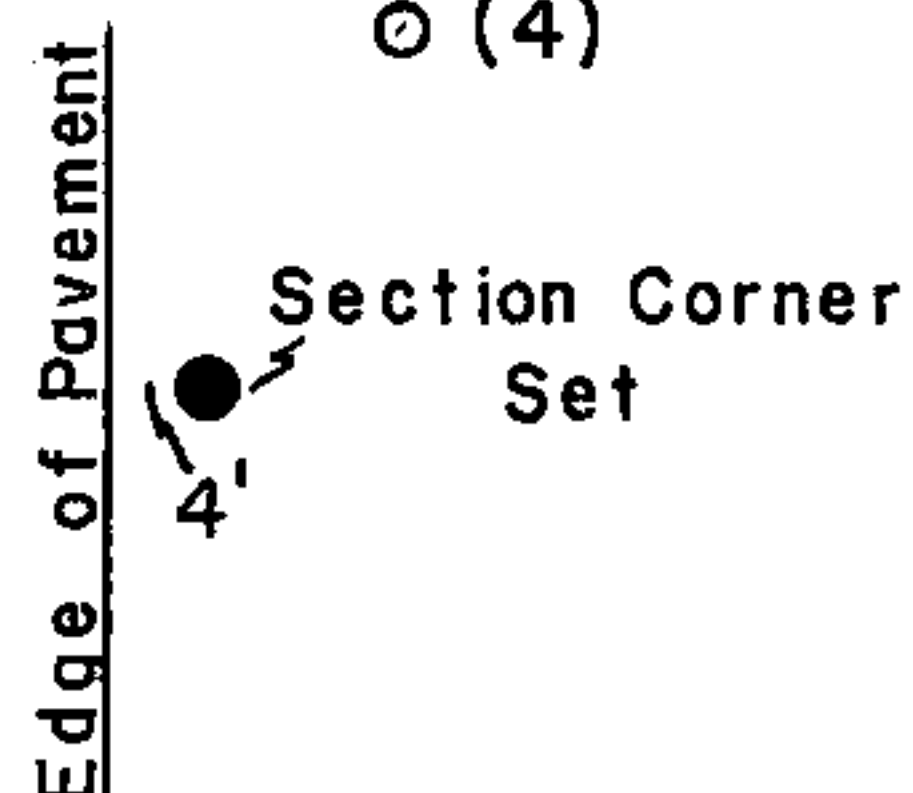
B.O.

- (4) ○ 3/4" Rebar N28E 38.43' ○ (4)

Monument Set
12" below ground



(1)



(3)

(2)

County File No. _____

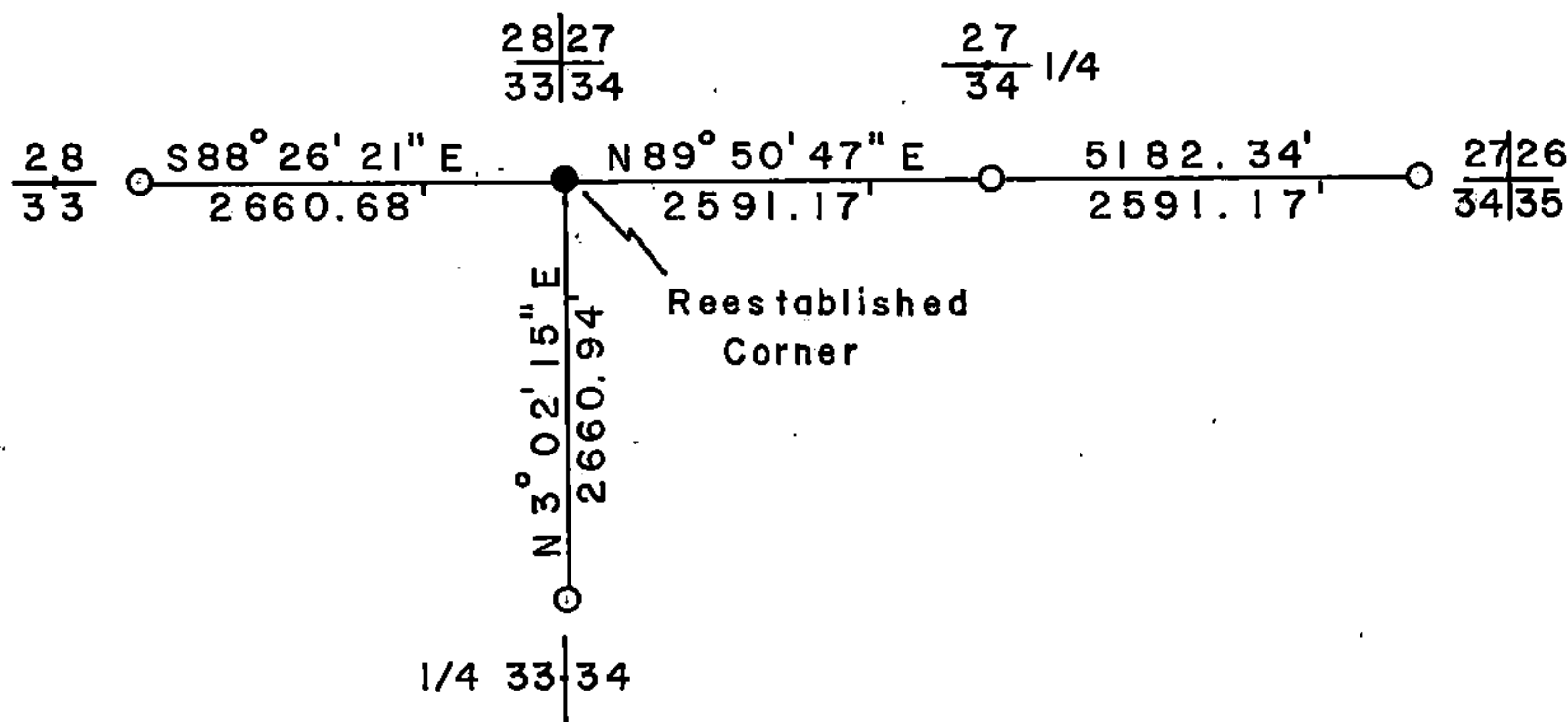
43714280000

(e) Describe an material discrepancy between the location of the corner as restored or reestablished and the location of that corner as previously restored or reestablished by distance and direction. Show the discrepancy on the plan view drawing under (d), above. Show the distances between the corner as previously restored or reestablished and (1) the corner as restored or reestablished, and (2) to at least 2 of the witness monuments shown on the drawing in (d), above.

(f) Was the corner restored through acceptance of (1) an obliterated evidence location, or, (2) a found perpetuated location?

(g&h) Was the corner reestablished through lost corners proportionate methods? If so, show the method, including the directions and distances to other public land survey corners used as evidence or used for proportioning in determining the corner location?

Retracement of J.R. Ritters 1921 survey.



REGISTER'S OFFICE
Forest County, Wis.
Received for record this 5th day
of January, A.D., 1997 at
3:45 o'clock P.M. and recorded
in Vol. Law Relations
page V-13: 33-37-14
John T. Luning, Deputy
Register of Deeds

(i) I, Glen Barker
(type or print name) certify that the corner location shown on this
record was determined by me or under my direction and control
and that this U.S. Public Land Survey Monument is correct and
complete to the best of my knowledge and belief.



Signature Glen Barker Date 12-05-97 SEC. --33-----TWN.---37-N-----RNG.-14---E-----