

U.S. PUBLIC LAND SURVEY MONUMENT RECORD

Index No. R-11

State of Wisconsin }
County of Forest ss.

I, Gary L. Pisoni, do hereby
certify that on the 16th day
of February, 1994, I found
evidence of the South Quarter
corner of Section 21
Township 37, North, Range
15 East, Fourth Principal Meridian,
as described hereon; and that from this evidence
I established a new monument and accessories
as described hereon to perpetuate the original
location of this corner.

Resident witnesses:

History of original corner establishment:

Original Government Survey in 1865 by J.L. Nowlin. West corrected between Sections
21 and 28, at 40.10 chs. set Quarter Section Post, from which the following bear;
Hemlock, 15", N 10°W, 20 Lks., Hemlock, 12", S 70°E, 28 Lks.

In 1977, Jean Resvick, a Registered Land Surveyor with the U.S. Forest Service, restored
the corner position at proportionate distance and on line between opposing Section
corners. At the corner position, set a 2" dia. galvanized iron pipe with a brass cap
stamped: T37N, R15E, 1/4, S.21, S.28, 1977, S-802. Blazed and scribed the following
bearing trees:

	Black Spruce	9"	S 70°E	42.8 feet
Description of corner evidence found:	Black Spruce	10"	N 65°W	10.3 feet
	Steel Sign Post		Northeast	0.5 feet

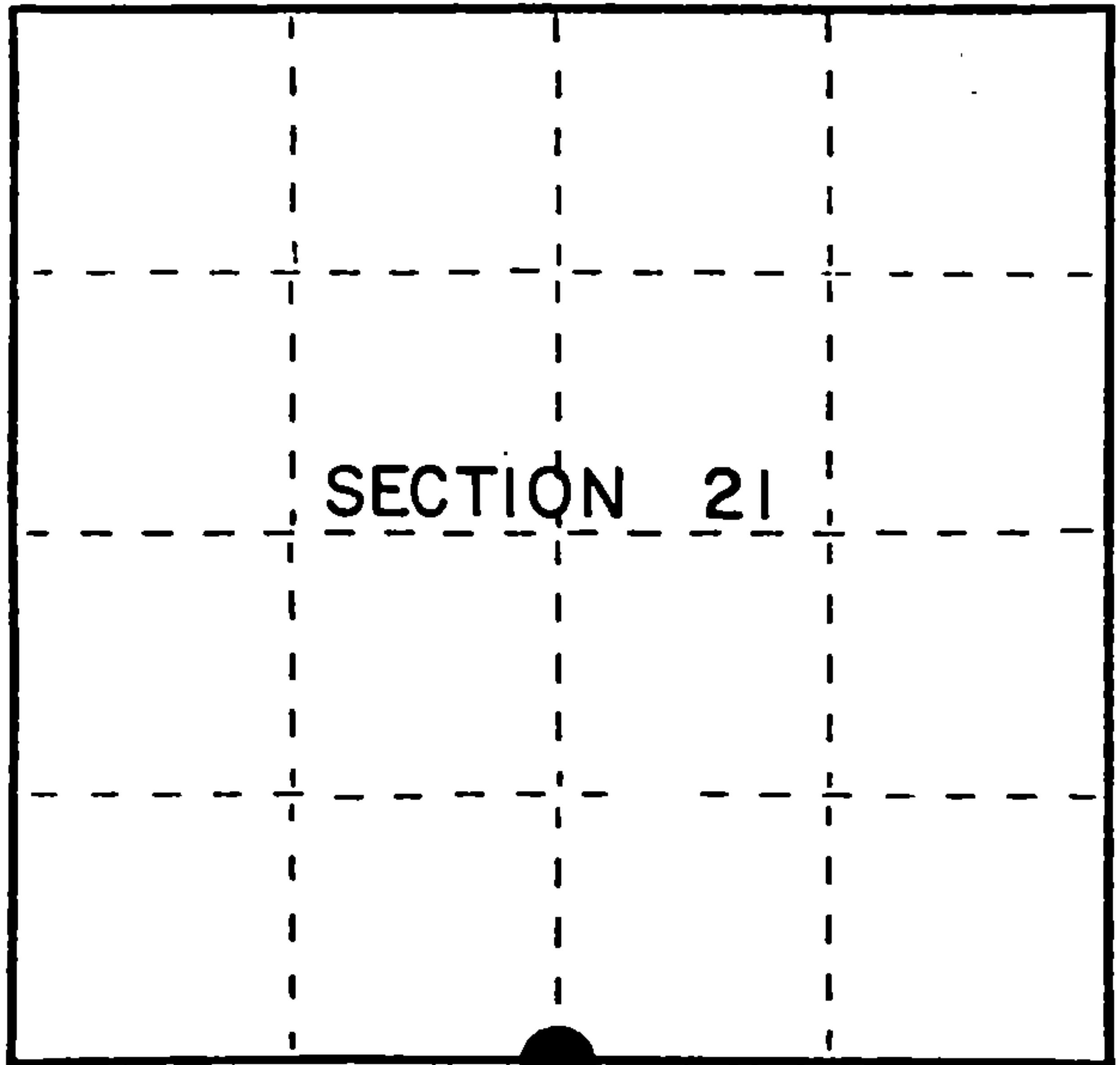
Found the monument as described above and the following bearing trees;

Black Spruce	9"	S 72°E	42.85 feet
Black Spruce	10"	N 63°W	10.30 feet
Steel Sign Post		Northeast	0.50 feet

Description of monument and accessories I established to perpetuate the original location of this corner.

Blazed and scribed the following new bearing trees; (Measurements are taken to a nail
in side of tree)

Black Spruce	5"	N 20°E	28.38 feet
Black Spruce	4"	S 50°W	21.08 feet



● = Corner monument restored.

Dated at Iron River, MI, this 5th day of May, 1994

Signature: Gary L. Pisoni Title: Land Surveyor Registration No. S-1634
(County Surveyor, Registered Land Surveyor, or other duly authorized official)

Office of Register of Deeds, County of Forest, I hereby certify that the within
instrument was filed in this office for record on the 24th day of March, 1997
at 1:30 o'clock P. M.

(Register of Deeds)

By: [Signature] Deputy

(e) Describe any material discrepancy between the location of the corner as restored or reestablished and the location of that corner as previously restored or reestablished by distance and direction. Show the discrepancy on the plan view drawing under (d), above. Show the distances between the corner as previously restored or reestablished and (1) the corner as restored or reestablished, and (2) to at least 2 of the witness monuments shown on the drawing in (d), above.

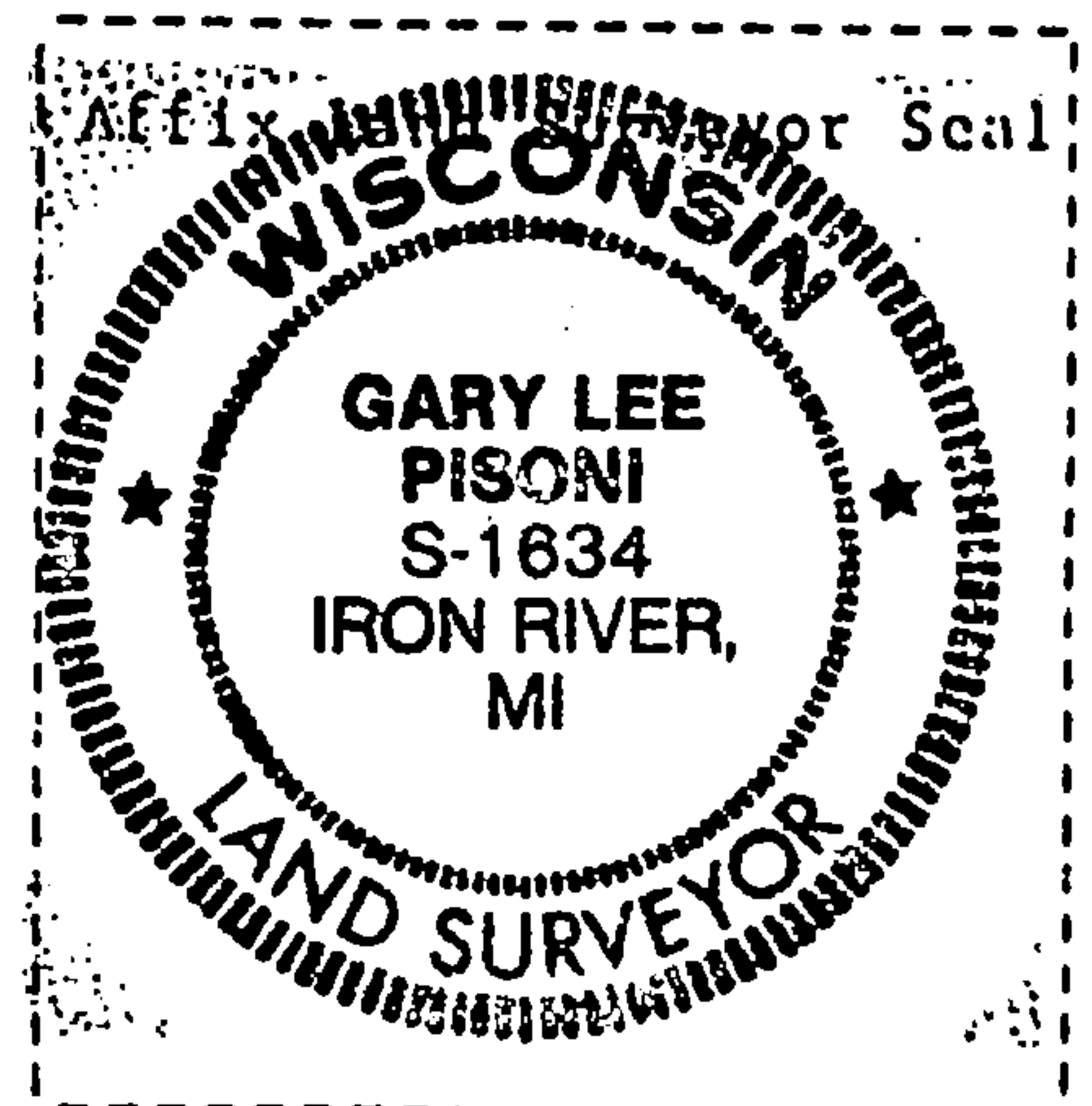
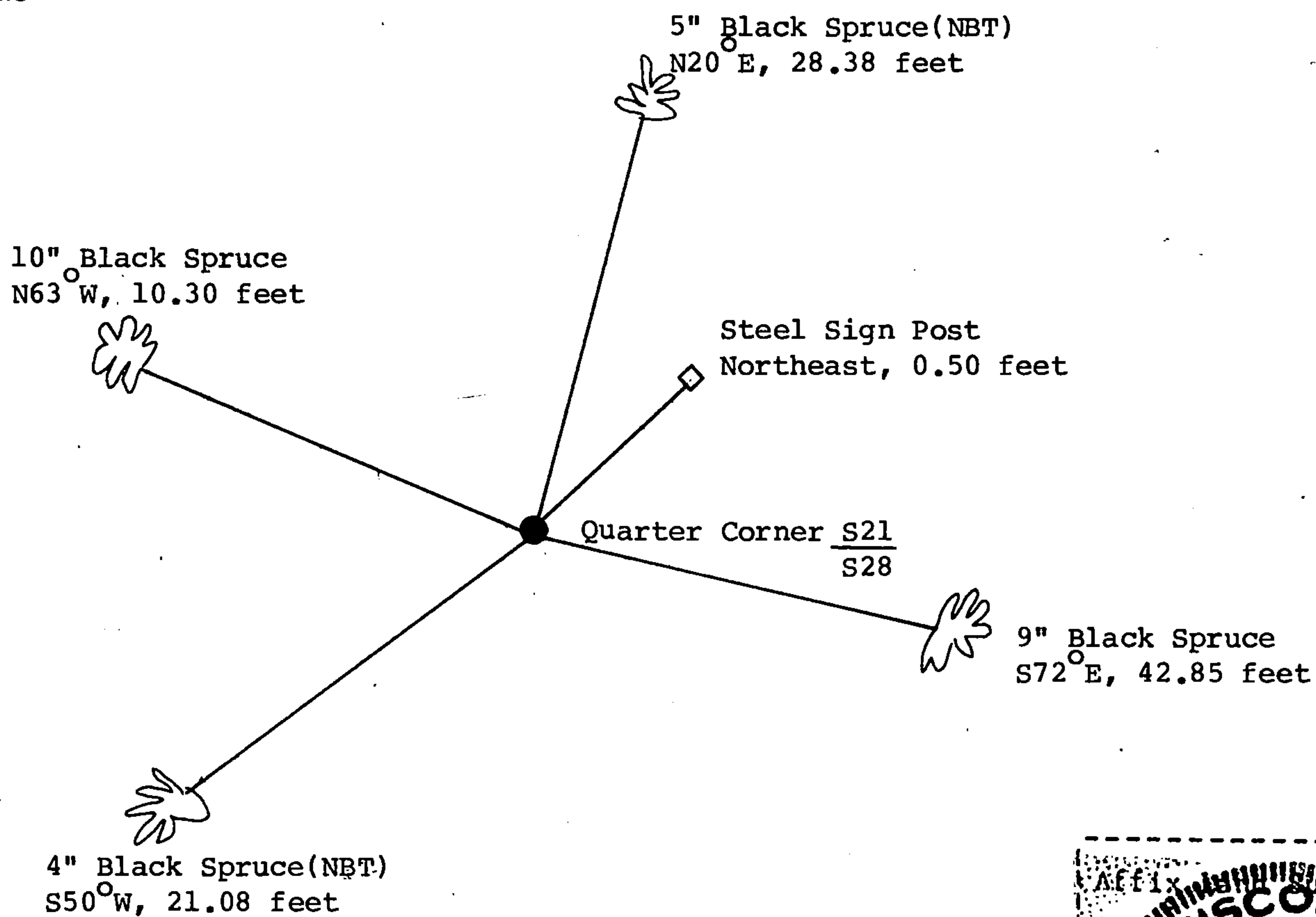
None

(f) Was the corner restored through acceptance of (1) an obliterated evidence location, or, (2) a found perpetuated location?

Restored through acceptance of a found perpetuated location.

(g&h) Was the corner reestablished through lost corner proportionate methods? If so, show the method, including the directions and distances to other public land survey corners used as evidence or used for proportioning in determining the corner location?

No



(i) I, Gary L. Pisoni
(type or print name) certify that the corner location shown on this record was determined by me or under my direction and control and that this U.S. Public Land Survey Monument Record is correct and complete to the best of my knowledge and belief.

Signature

Gary L. Pisoni

Date

9-18-95