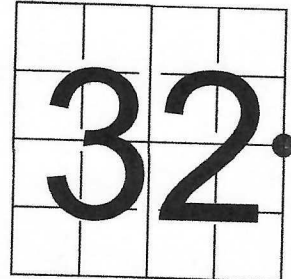


U S PUBLIC LAND SURVEY MONUMENT RECORD - ADDENDUM

NOTE: This form is intended and designed to fulfill all requirements of Wisconsin Administrative Code, Chapter A-E 7.08 U.S. Public Land Survey Monument Record (3) (a-i)

A-E 7.08(3)(a) Identity of corner  
EAST 1/4 CORNER OF SECTION 32  
TOWNSHIP 37 NORTH  
RANGE 15 EAST OF THE 4TH PM  
TOWN OF CASWELL,  
COUNTY OF FOREST

WISCRS - FOREST COUNTY  
N: 597,608.633 USft (XXX,XXX.XX)  
E: 904,408.753 USft (XXX,XXX.XX)  
Datum: NAD83 (2011)  
GNSS Method RTN - Direct  
GNSS Control WISCORS VRS



The coordinate value shown has been verified by the average of two or more GPS observations at a markedly different time. Values shown in parenthesis, are previously published measurements.

A-E 7.08(3)(b) Description of any record evidence, monument evidence, occupational evidence, testimonial evidence, or any other material evidence.

Original Surveyor: James L. Nowlin

Date of Original Survey Commenced: August 7, 1865  
Completed: August 18, 1865

Original Accessories:  
Lind 12 S 63° E 30 lks  
Sugar 10 S 20° W 10 lks

See Previous Monument Record: Index No. X-9 - December 3, 1986 - Surveyor 1651 - Alan D. Harrison

1986 - Surveyor 1651 - Alan D. Harrison - indicates this position as "railroad spike" on Record #371532-19861203.  
September 20, 1988 - Surveyor 1682 - Glen Barker - indicates this position as "railroad spike found" on Record #371533-19880920.  
March 30, 1991 - Surveyor 00973 - Wayne G. Dobbratz - indicates this position as "found a railroad spike" on Record #371532-1991100330.  
May 19, 1996 - Surveyor 00973 - Wayne G. Dobbratz - indicates this position as "found a railroad spike" on Record #371532-199610519.  
November 2, 2017 - Surveyor 809-8 - Michael S. Hess - indicates this position as "W 1/4 Corner Section 33 from ties" on Record #371533-20180303.

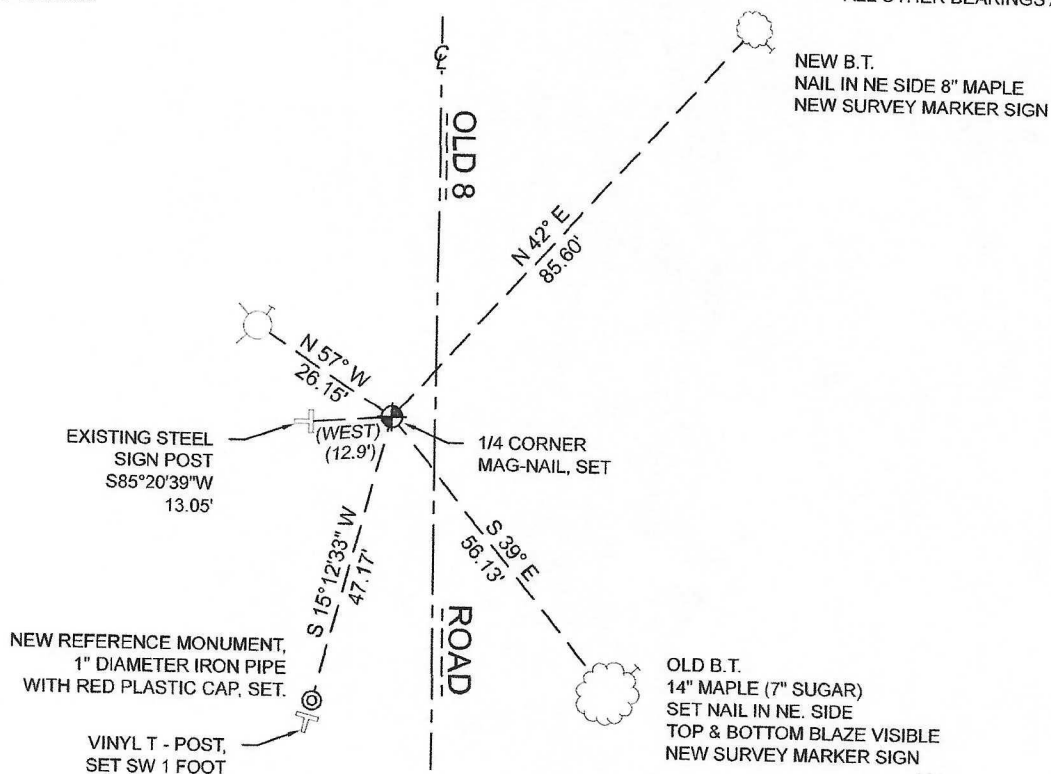
A-E 7.08(3)(f) Whether the corner was restored through acceptance of an obliterated location or a found perpetuated location.

January 20, 2022 - I did not find any monument at this position. I did find 3 of Harrison's reference monuments.  
I reestablished the corner position using Harrison's witness monuments, and monuments from Harrison's 1986 survey of Section 32, T.37N., R.15E., and placed a standard size mag nail at the corner location

I accept this monument as a FOUND PERPETUATED LOCATION OF THE CORNER and established 2 new witnesses as shown below.

A-E 7.08(3)(c)(d)(e)(h) Plan view of corner with references to at least 4 witness monuments. If in disagreement with previously established corner, show the distances between the two corners and also indicate the ties to the disputed. The directions and distances to other public land survey corners used as evidence or used for determining the corner location.

BEARINGS LISTED TO THE NEAREST  
SECOND ARE REFERENCED TO WISCONSIN  
COUNTY COORDINATE REFERENCE  
SYSTEM - FOREST COUNTY ZONE.  
ALL OTHER BEARINGS ARE MAGNETIC.



A-E 7.08(3)(i) I, Jeffrey L. DeMuth, Professional Land Surveyor No. S-2656, hereby certify that the corner location on this record was determined by me or under my direction and control and that this U.S. Public Land Survey Monument Record is correct and complete to the best of my knowledge, and belief

SIGNATURE

August 12, 2022

DATE



43715322000

# U. S. PUBLIC LAND SURVEY MONUMENT RECORD

## INSTRUCTIONS:

This record shall show the location of the corner and shall include all of the following nine elements (a through i).

- (a) Identify the corner by reference to the U.S. public land survey system.

○ = Corner monument restored.

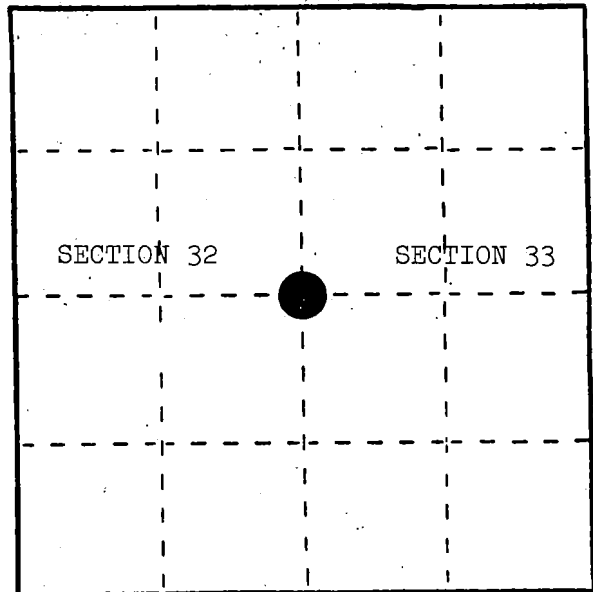
Quarter corner to Sections 32 and 33, T.37N., R.15E.

REGISTER'S OFFICE  
Forest County, Wis.

Received for record this 3rd day  
of December A.D., 1986 at  
1:30 o'clock P.M. and recorded  
in Vol. CORNER RESTORATIONS

page 8-9

Paul Aschenbrenner  
Register of Deeds



- (b) Describe any record evidence, monument evidence, occupational evidence, testimonial evidence or any other material evidence you considered, and whether the monument was found or placed.

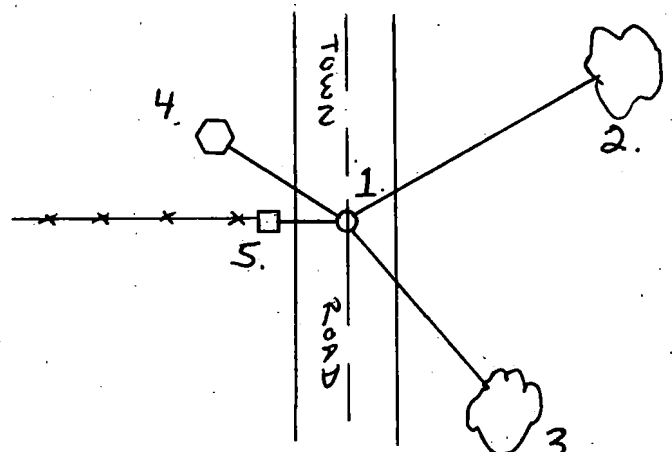
In 1865, J. L. Nowlin set a wood post with the following BTs: Lind, 12", S.63°E., 30 links; Sugar, 10", S.20°W., 10 links.

In 1985, Milo Stefan found an east-west fence line and the curve P.I. of a north-south road as the best available evidence of the corner location and placed a railroad spike in the blacktop to mark the corner location.

- (c) In the plan view drawing below, provide reference ties to at least 4 witness monuments, or, if the location is within a municipality, to at least 2 witness monuments. (Witness monuments shall be made of concrete, natural stone, iron or other equally durable material.)  
Describe witness monuments.

- (d) Show a plan view drawing depicting the relevant monuments and reference ties which is sufficient in detail to enable accurate relocation of the corner monument if the corner monument is disturbed. Indicate north.

- Railroad spike in highway marking the corner location.
- Sugar, 7", N.59°E., 84.16 feet
- Sugar, 7", S.39°E., 56.13 feet
- Power Pole #3715-32E17, N.57°W., 26.15 feet
- Steel Sign Post, 6', West, 12.9 feet



(e) Describe any material discrepancy between the location of the corner as restored or reestablished and the location of that corner as previously restored or reestablished by distance and direction. Show the discrepancy on the plan view drawing under (d), above. Show the distances between the corner as previously restored or reestablished and (1) the corner as restored or reestablished, and (2) to at least 2 of the witness monuments shown on the drawing in (d), above.

(f) Was the corner restored through acceptance of (1) an obliterated evidence location, or, (2) a found perpetuated location?

(1) an obliterated evidence location.

(g&h) Was the corner reestablished through lost corner proportionate methods? If so, show the method, including the directions and distances to other public land survey corners used as evidence or used for proportioning in determining the corner location?

No.

(1) I, Alan D. Harrison  
(Type or print name) certify that the corner location shown on this record was determined by me or under my direction and control and that this U.S. Public Land Survey Monument Record is correct and complete to the best of my knowledge and belief.

Alan D. Harrison  
Signature

12-03-86  
Date

