

REGISTER'S OFFICE
Forest County, Wis.
Received for record this 21ST day
of January A.D., 2010 at
4:00 o'clock A M. and recorded
in Vol. Corner Restoration
page G-25

Document Number

202467

U.S. PUBLIC LAND SURVEY MONUMENT RECORD

(As Required By s. A-E 7.08, WI Adm. Code)

History of original corner establishment and subsequent restorations and description of any record, monument, occupational, testimonial or other evidence considered:

1857 ARTERMAS CURTIS, DEPUTY SURVEYOR ESTABLISHED CORNER

1996 H. GUY FOUND A 4 INCH TAMARACK POST NEXT TO A CEDAR POST. HE SET A 1 1/4 INCH x 60 INCH PIPE

2005 JERRY PILLATH, MARINETTE COUNTY SURVEYOR FOUND AND TIED GUY'S CORNER

2010 JEFFREY M. LIEUWEN, REGISTERED LAND SURVEYOR, S-2617 FOUND 1 1/4 INCH PIPE AND TIES AS SHOWN

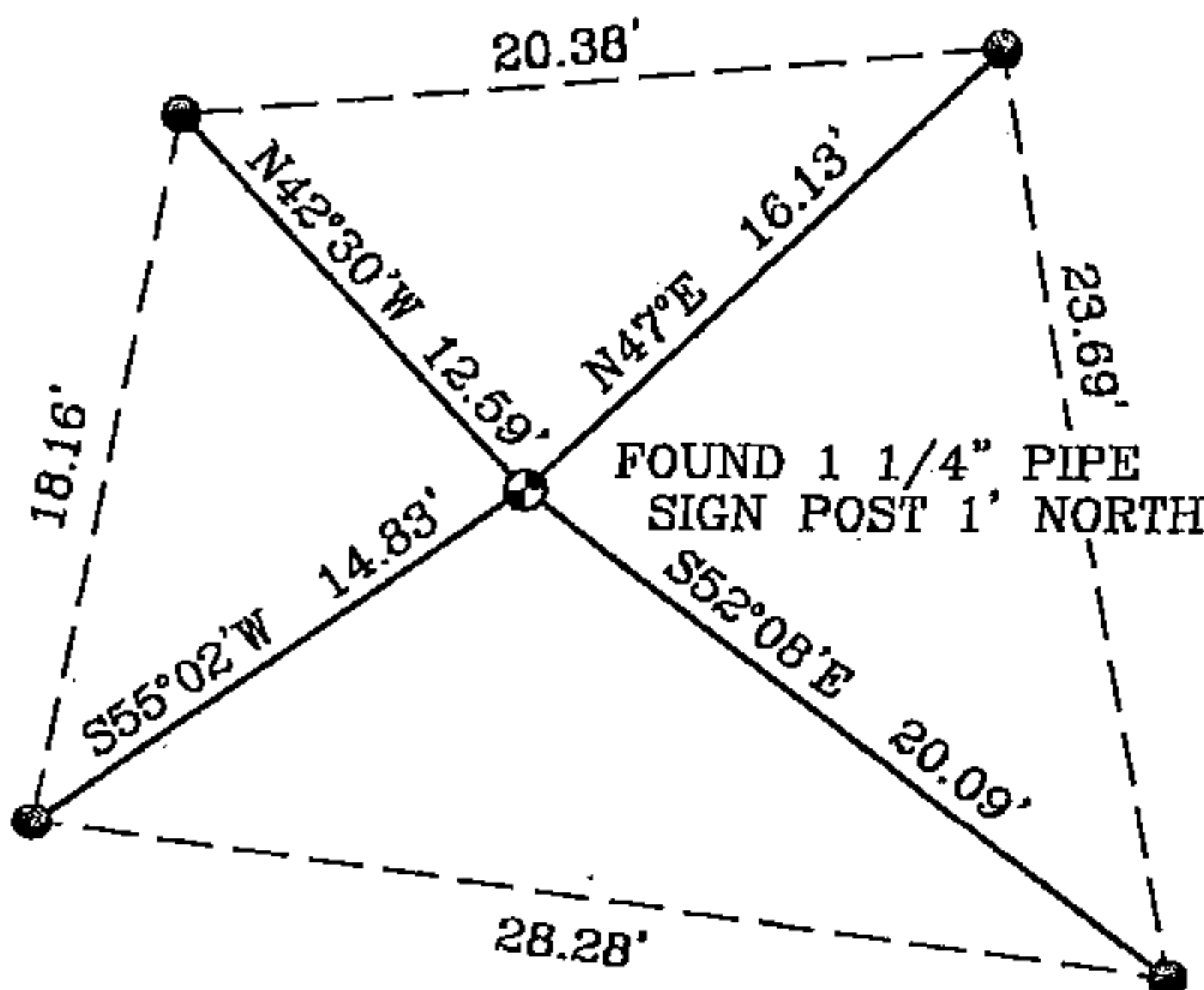
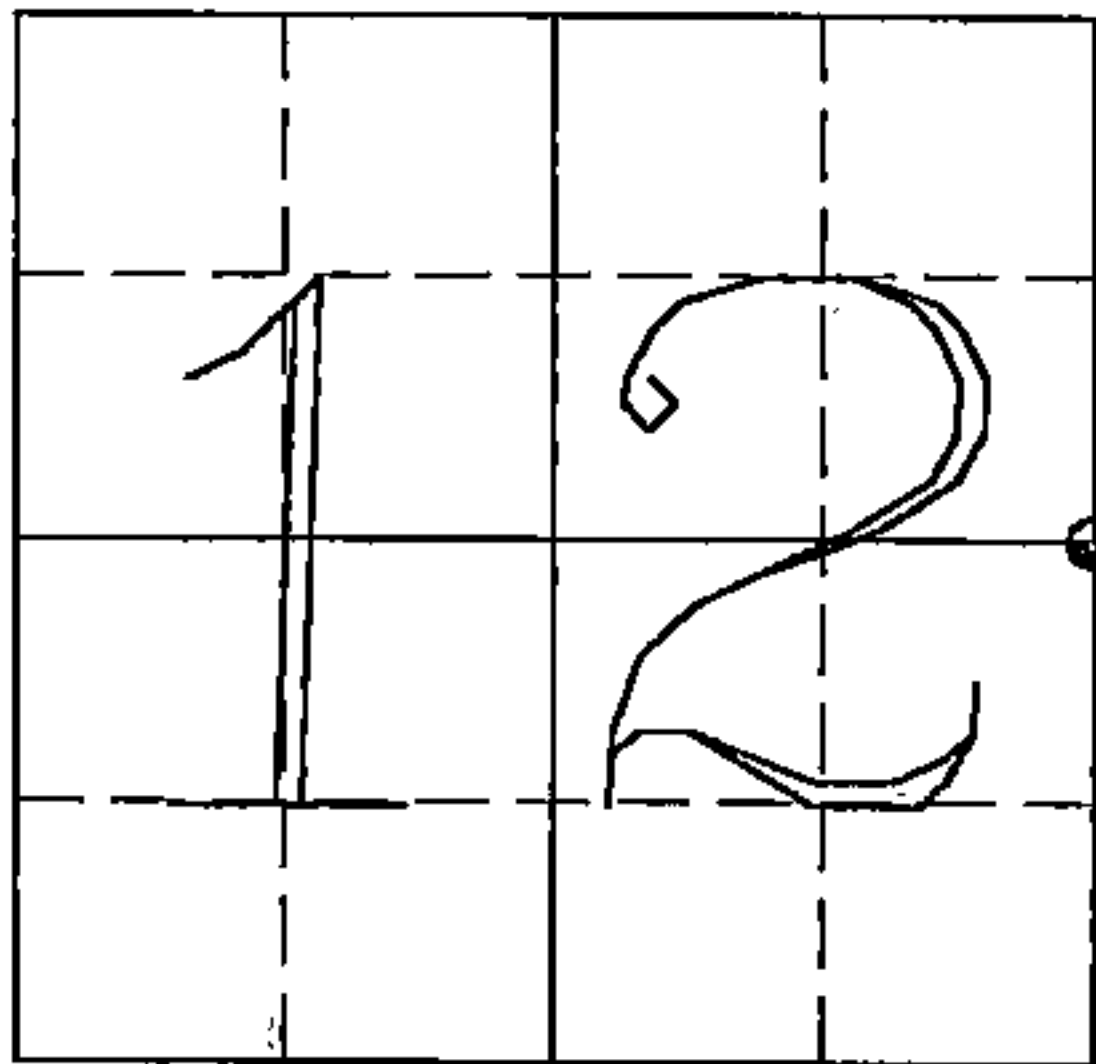
Corner was: (Check All That Apply)

- ☐ Restored through acceptance of an obliterated evidence location
- ☒ Restored through acceptance of a found perpetuated location
- ☐ Considered a lost corner and reestablished through lost corner proportionate methods(include a plan view drawing showing distancees and directions to other Public Land Survey Corner used for proportioning and determining the corner location)
- ☐ Restored or reestablished in a location that differs from a previous restoration of reestablishedment(include a plan view drawing and indicate what was set and/or found)

Describe the monument and accessories used to perpetuate the location of this corner. (include a plan view drawing and indicate what was set and/or found)

NOTE: ALL TIES ARE 1" x 30" IRON RODS

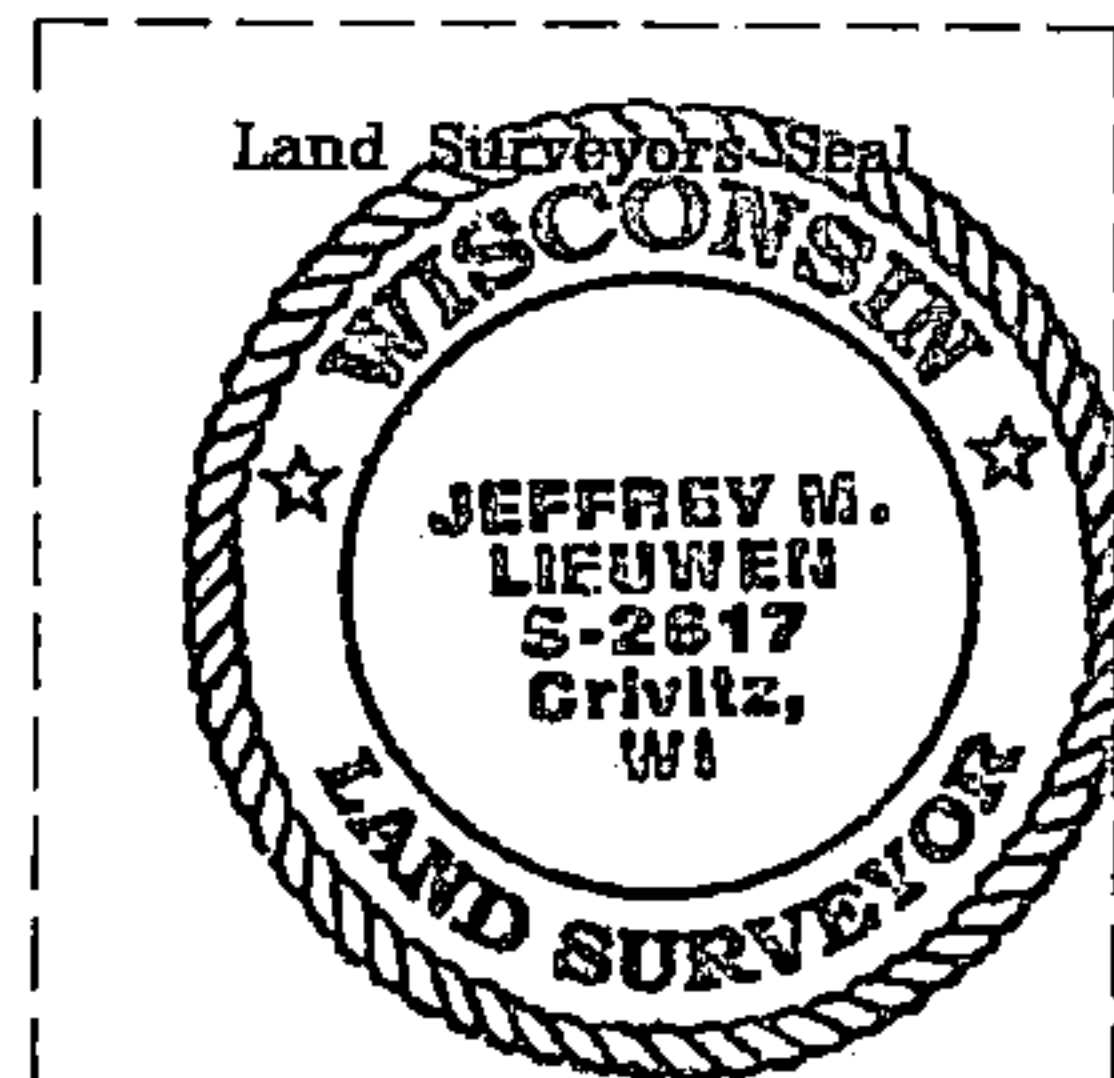
The EAST QUARTER CORNER
of Section 12, T37N-R16E
Forth Principal Meridian,
Forest County, Wisconsin



⊙ = Location

I, JEFFREY M. LIEUWEN RLS 2617
(type or print name) certify that the corner location shown on this record was determined by
me or under my direction and control and that this U.S. Public Land Survey Monument Record
is correct and complete to the best of my knowledge and belief.

[Signature] 1/17/2010
Signature Date



Index No. G-25

43716122000

G
2
5