

U.S. PUBLIC LAND SURVEY MONUMENT RECORD

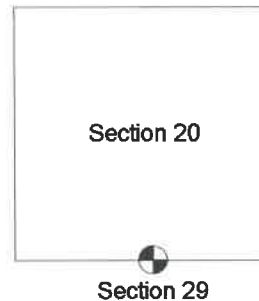
NOTE: This form is intended and designed to fulfill all requirements of Wisconsin Administrative Code, Chapter A-E 5.02, U.S. Public Land Survey Monument Record (3) (a) (b) (c) (d) (e) (f) (g) (h) (i). An additional sheet may be added if necessary to conform with said requirements.

(a) Corner location: Township 37 North

Range 16 East

Town/City/Village Armstrong Creek

County Forest



Section 29

ONE-QUARTER CORNER COMMON TO
SECTIONS 20 AND 29, T37N - R16E

(b) (f) (g) (h) Description of monument found at this corner and if it was accepted, state all evidence (material, testimonial, occupation, plats, records, other monuments) used as a basis for accepting. If not accepted or if nothing was found, state evidence used as basis for establishing location. If reestablished through lost corner proportionate methods, indicate all monuments, distances and direction used to establish.

No original corner evidence was found. I restored corner position equidistant (2619.75') from Section corners East and West and on the extension of a fence running East from Vital lane. This places the corner near the Southerly edge of a camp yard, West of Vital lane. This position also falls approximately 63 feet West of a North-South fence line on the East side of Vital lane. This fence line is too far off to accept and it appears it was built from the East side of Vital lane and then running North. Vital lane also has a noticeable Northeasterly variation from North as it runs North from U.S. Highway 8.

(c) (d) (e) Plan view of corner with ties to at least 4 witness monuments. If in disagreement with previously established corner, show the distance between the two corners and also indicate the ties to the disputed corner.

CENTER OF HAND PUMP
WELL NEAR CAMP.



SET FOREST COUNTY
ALUMINUM MONUMENT
AT 1/4 CORNER.

10d NAIL IN
8" SUGAR

10d NAIL IN
12" SUGAR

10d NAIL IN
5" ASPEN

VITAL
LANE

(i) I, STEVEN R. APPLEKAMP

(type or print name) certify that the corner location on this record was determined by me or under my direction and control and that this U.S. Public Land Survey Monument Record is correct and complete to the best of my knowledge and belief.

Signature

Date

INDEX NO. R-7

43716200020

R-7