

Document Number  
164219

U.S. PUBLIC LAND SURVEY MONUMENT RECORD

(As Required By s. A-E 7.08, WI Adm. Code)

History of original corner establishment and subsequent restorations and description of any record, monument, occupational, testimonial or other evidence considered:

1953 G.E. Co. probably set 2" iron pipe with aluminum cap  
1998 H. Guy found 2" iron pipe with aluminum cap

REGISTER'S OFFICE  
Forest County, Wis.  
Received for record this 31<sup>st</sup> day  
of December A.D., 1998 at  
9:00 o'clock A.M. and recorded  
in Vol. CORNER RESTORATIONS  
page V-25  
Christin Ehling  
Deputy Register of Deeds

Corner was: (Check All That Apply)

- ☐ Restored through acceptance of an obliterated evidence location  
☒ Restored through acceptance of a found perpetuated location  
☐ Considered a lost corner and reestablished through lost corner proportionate methods (include a plan view drawing showing distances and directions to other Public Land Survey Corners used for proportioning and determining the corner location)  
☐ Restored or reestablished in a location that differs from a previous restoration or reestablishment (include a plan view drawing and indicate what was set and/or found)

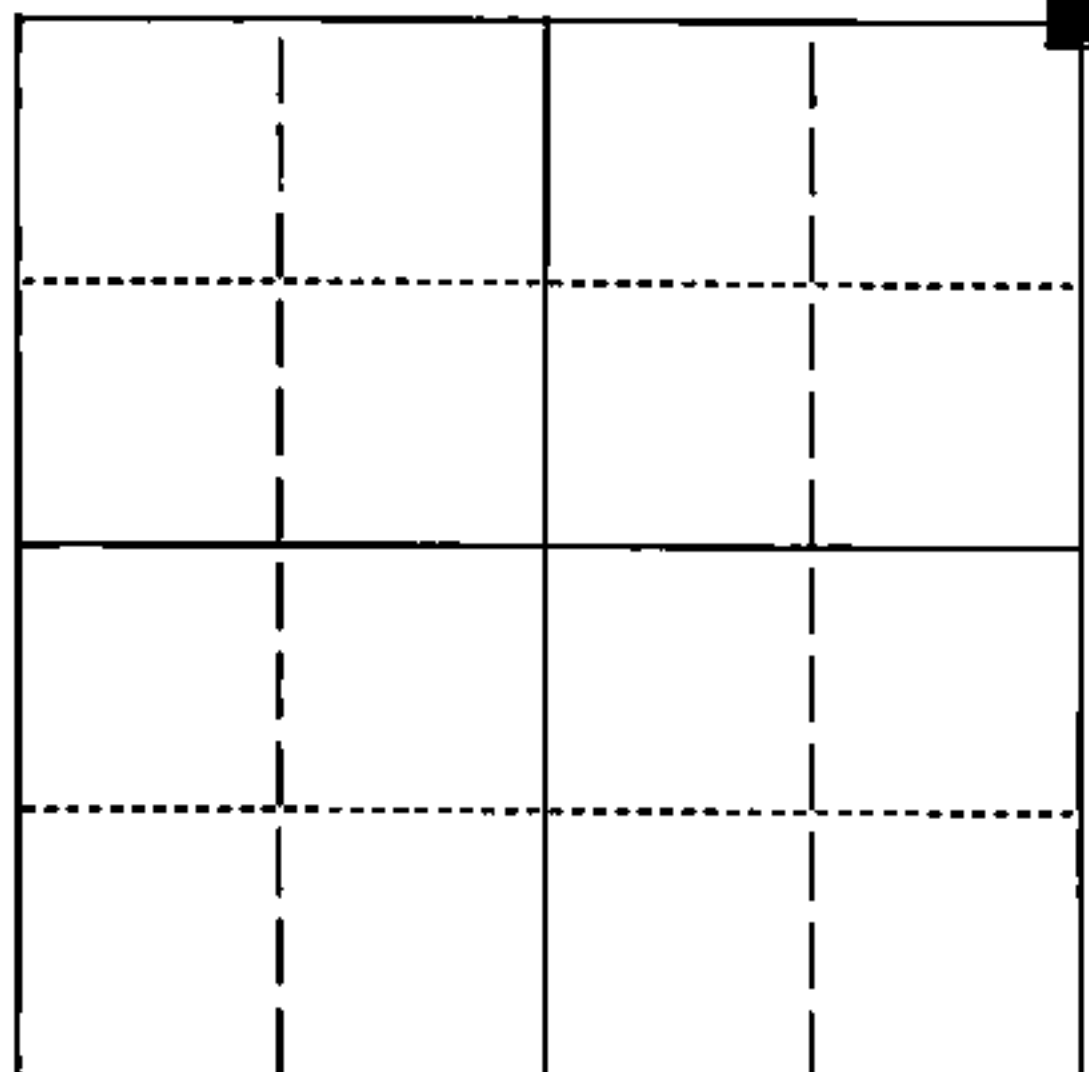
Describe the monument and accessories used to perpetuate the location of this corner. (include a plan view drawing and indicate what was set and/or found)

● 5/8" IRON ROD SET

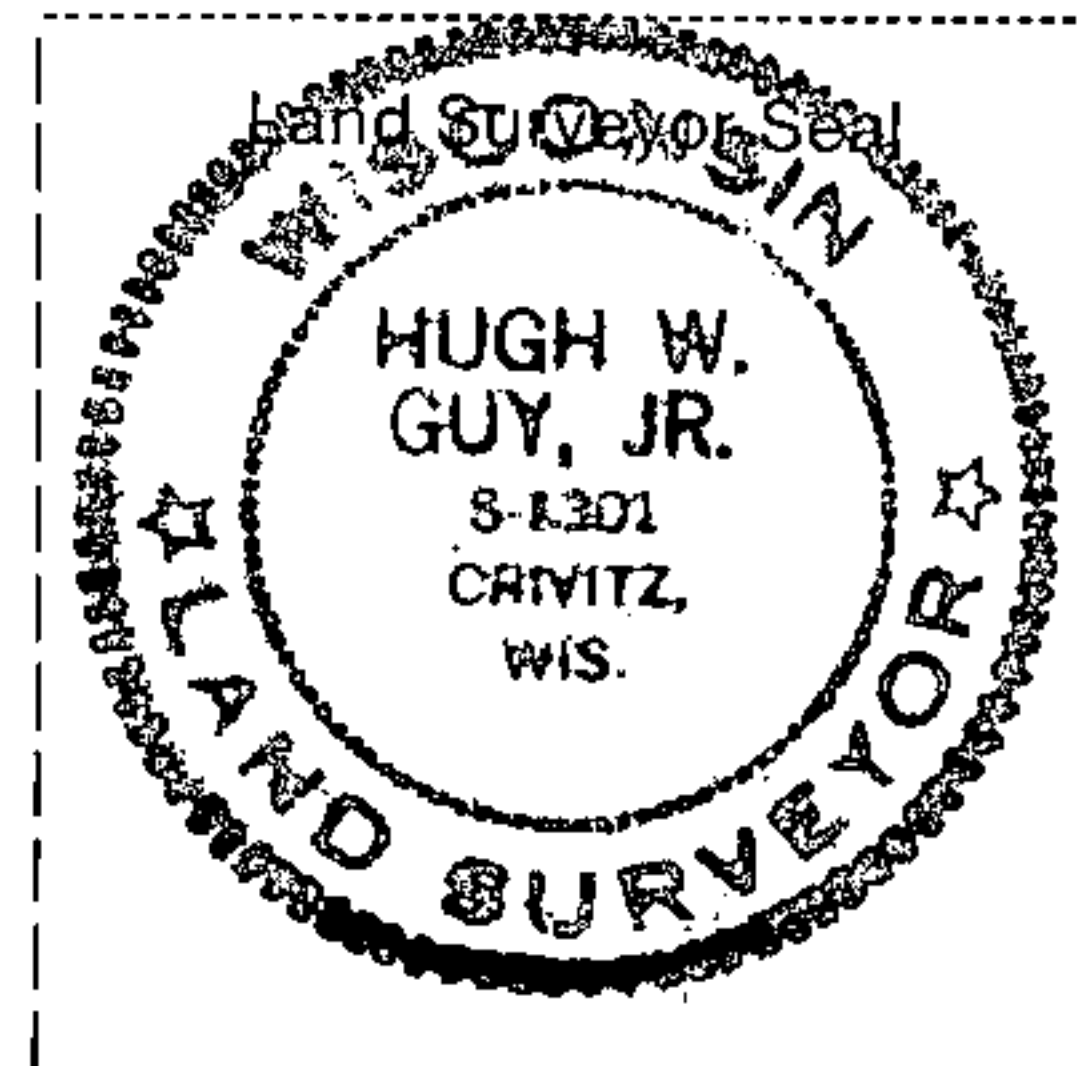
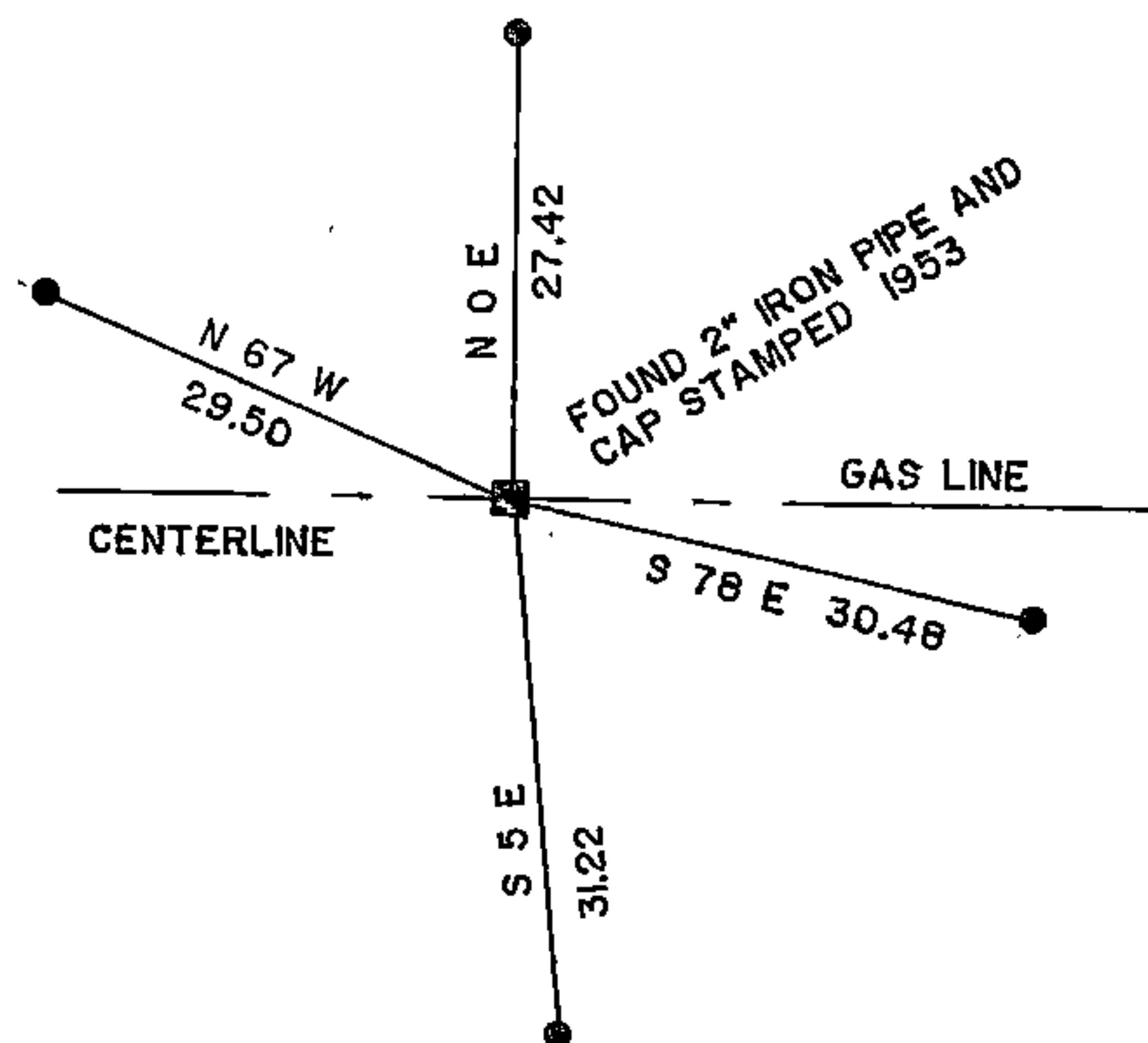
SCALE 1" = 20'

The NORTH EAST  
corner of Section 36,  
T. 37 N., R. 16 E.,  
Fourth Principal Meridian,  
Forest County, Wisconsin

Forest



■ = Location of Corner



I, HUGH W. GUY JR. RLS 1301  
(type or print name) certify that the corner location shown on this record was determined by  
me or under my direction and control and that this U.S. Public Land Survey Monument Record  
is correct and complete to the best of my knowledge and belief.

Signature

12/22/98

Date

Index No:

43716250000

V 25

V 25