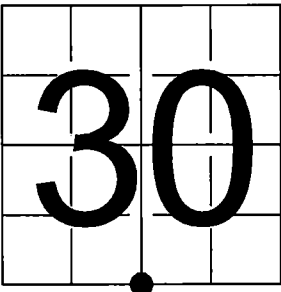


U.S. PUBLIC LAND SURVEY  
MONUMENT RECORD

NOTE: This form is intended and designed to fulfill all requirements of Wisconsin Administrative Code, Chapter A-E 7.08 U.S. Public Land Survey Monument Record (3) (a-i)

A-E 7.08(3)(a) Identity of corner:  
South 1/4 Corner Section 30,  
Township 37 North, Range 16 East  
of the Fourth Principal Meridian,  
Town of Armstrong Creek, Forest County,  
Wisconsin

WISCRS - FOREST COUNTY  
N: 599,821.467 USft (XXX,XXX.XXX)  
E: 929,080.467 USft (XXX,XXX.XXX)  
Datum: NAD83 (2011)  
GNSS Method RTK  
GNSS Control WISCRS VRS



The coordinate value shown has been verified by the average of two or more GPS observations at a markedly different time. Coordinates shown in parenthesis are previously published values.

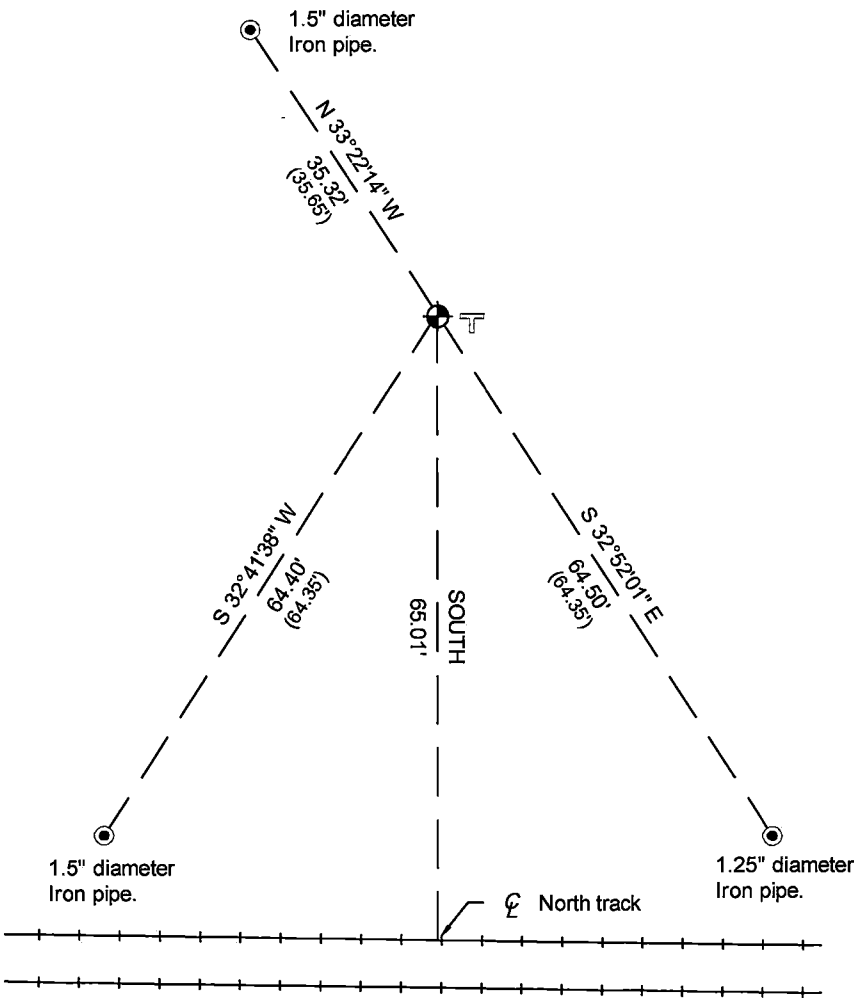
A-E 7.08(3)(b)

Original Surveyor: James McBride - July 11, 1859 to July 16, 1859  
Tamarac 12 - N 11° W, 24 Links, Tamarac 12 - S 67° W, 24 Links

See previous Certified Land Corner Restoration - V-3 - December 18, 1986 - Surveyor 1394 - Norman A. Harrison - THENCE:

- July 30, 1996 - Surveyor 1394 - Norman A. Harrison - indicates this position as "1 1/4" X 24" iron pipe set" on county record Map #371630-19851010.
- December 6, 2024 - Surveyor 3032 - Michael J. Hoffman - indicates this position as "found aluminum capped monument" on county record Map #371631-20241206.

August 12, 2025 - I found a 2.4" diameter aluminum pipe monument with a 3.25" diameter aluminum cap stamped to identify the corner location. The monument is ±67 feet north of the centerline of the railroad tracks in a low wet alder marsh. I also found 3 of Harrison's reference monuments in good condition. I established 1 new reference monument as shown below.



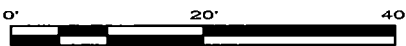
A-E 7.08(3)(c)(d) Plan view of corner with references to at least 4 witness monuments.

Bearings listed to the nearest second are referenced to the: Wisconsin County Coordinate Reference System, Forest County Zone. All other bearings are magnetic.

LEGEND

Monument sizes = outside diameter measurements.

- ⊕ This Corner
- ⊥ Vinyl T-post, set ±1 foot east of corner
- Iron pipe, found as noted



A-E 7.08(3)(e) 1859 Surveyor set a post, 1986 Surveyor set a Forest County aluminum monument, 2024 Surveyor found the same, as did I in 2025.

A-E 7.08(3)(f) I accept this monument in good faith as a FOUND PERPETUATED LOCATION of the corner.

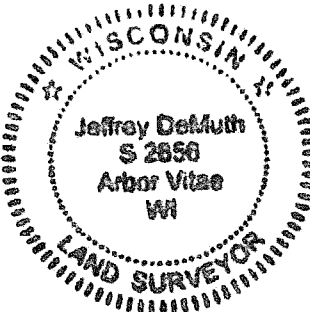
A-E 7.08(3)(g)(h) This corner was not determined through lost-corner-proportionate methods.

A-E 7.08(3)(i) I, Jeffrey L. DeMuth, Professional Land Surveyor No. S-2656, hereby certify that the corner location on this record was determined by me or under my direction and control, and that this U.S. Public Land Survey Monument Record is correct and complete to the best of my knowledge, and belief.

SIGNATURE

September 16, 2025

DATE



43716300020