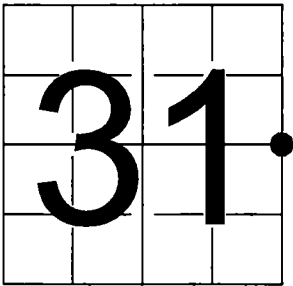


U.S. PUBLIC LAND SURVEY
MONUMENT RECORD

NOTE: This form is intended and designed to fulfill all requirements of Wisconsin Administrative Code, Chapter A-E 7.08 U.S. Public Land Survey Monument Record (3) (a-i)

A-E 7.08(3)(a) Identity of corner:
East 1/4 Corner Section 31,
Township 37 North, Range 16 East
of the Fourth Principal Meridian,
Town of Armstrong Creek, Forest County,
Wisconsin

WISCRS - FOREST COUNTY
N: 597,174.314 USft (XXX,XXX.XXX)
E: 931,736.158 USft (XXX,XXX.XXX)
Datum: NAD83 (2011)
GNSS Method RTN
GNSS Control WISCORS VRS



The coordinate value shown has been verified by the average of two or more GPS observations at a markedly different time. Coordinates shown in parenthesis are previously published values.

A-E 7.08(3)(b)

Original Surveyor: J.L. Nowlin - August 7, 1865 to August 18, 1865
W. Pine 12 - N 77° E, 15 Links, Fir 6 - S 12° W, 7 Links

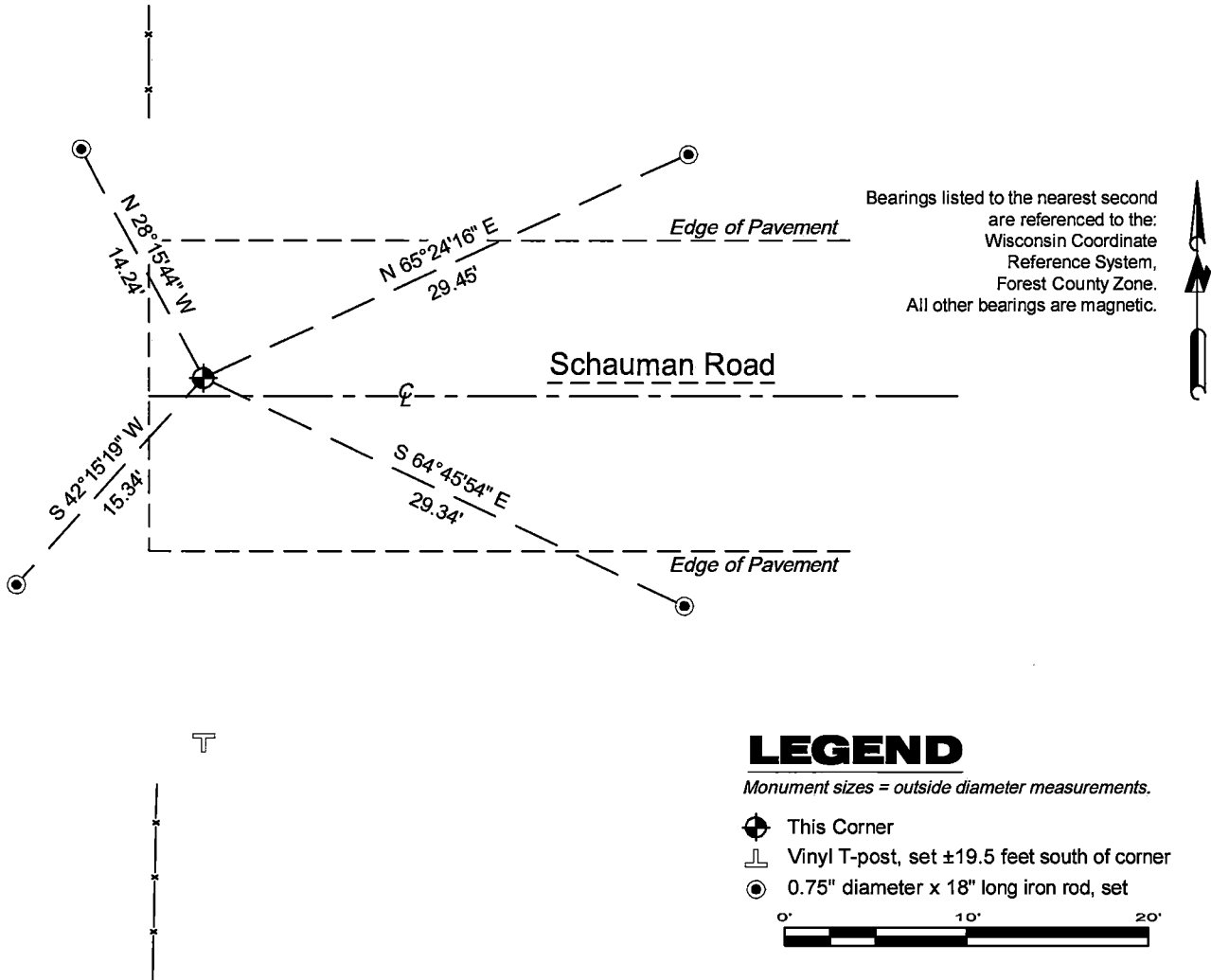
THENCE:

- June 23, 2009 - Surveyor 2402 - Steven R. Applekamp - indicates this position as "by symbol" on Certified Survey Map #212351.
- December 6, 2024 - Surveyor 3032 - Michael J. Hoffman - indicates this position as "found Mag nail" on county record Map #371631-20241206.

July 28, 2025 - I found a Mag nail with the head broken off. The monument is ±1 north of the centerline of Schauman Road, and is ±3 feet east of an old fence line heading north, an old fence line heading south, and the end of the paved road. I found no record of this monument.

I established 4 new reference monument as shown below.

A-E 7.08(3)(c)(d) Plan view of corner with references to at least 4 witness monuments.



A-E 7.08(3)(e) 1865 Surveyor set a post, 2009 Surveyor did not describe the monument, 2024 Surveyor found a Mag nail, as did I in 2025.

A-E 7.08(3)(f) I accept this monument in good faith as a FOUND PERPETUATED LOCATION of the corner.

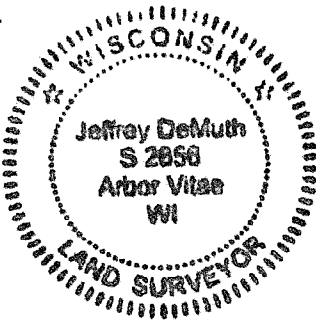
A-E 7.08(3)(g)(h) This corner was not determined through lost-corner-proportionate methods.

A-E 7.08(3)(i) I, Jeffrey L. DeMuth, Professional Land Surveyor No. S-2656, hereby certify that the corner location on this record was determined by me or under my direction and control, and that this U.S. Public Land Survey Monument Record is correct and complete to the best of my knowledge, and belief.

SIGNATURE

September 25, 2025

DATE



43716312000