

# U S PUBLIC LAND SURVEY MONUMENT RECORD

NOTE: This form is intended and designed to fulfill all requirements of Wisconsin Administrative Code, Chapter A-E 7.08 U.S. Public Land Survey Monument Record (3) (a-i)

A-E 7.08(3)(a) Identity of corner  
EAST 1/4 CORNER OF SECTION 32  
TOWNSHIP 37 NORTH  
RANGE 16 EAST OF THE 4TH PM  
TOWN OF ARMSTRONG CREEK  
COUNTY OF FOREST

WISCRS - FOREST COUNTY  
N: 597,187.325 USft  
E: 936,962.723 USft  
Datum: NAD83 (2011)  
GNSS Method RTN - Direct  
GNSS Control WISCORS VRS



The coordinate value shown is the average of two or more GPS observations at a markedly different time.

A-E 7.08(3)(b) Description of any record evidence, monument evidence, occupational evidence, testimonial evidence, or any other material evidence.

Original Surveyor: Artemus Curtis

Date of Original Survey    Commenced:    September 1857  
   Completed:    October 1857

Original Accessories:

Hemlock    10    N 50° W    21 Links  
Hemlock    12    S 46° E    31 Links

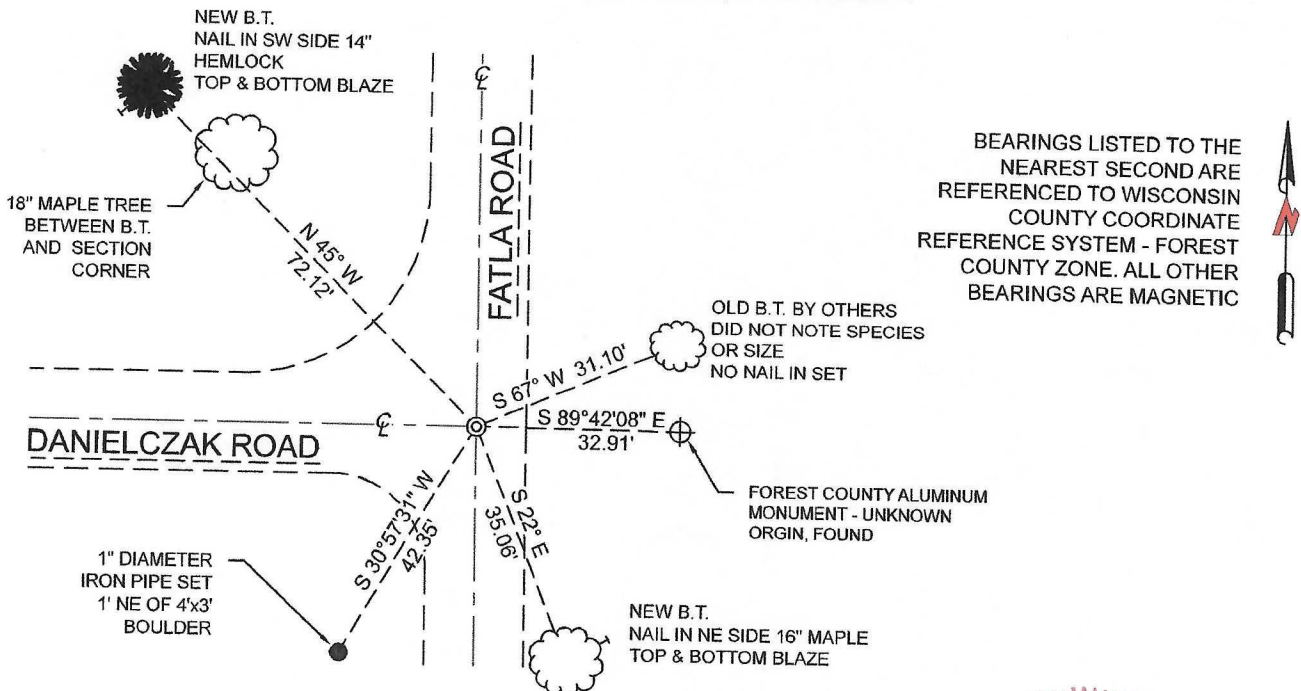
See Previous Monument Record:  
Index No. NONE AT THIS TIME

A-E 7.08(3)(f) Whether the corner was restored through acceptance of an obliterated location or a found perpetuated location.

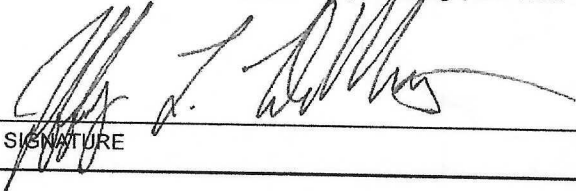
October 29, 2021 - I found a 1 1/2" diameter Iron Pipe at the centerline intersections of Fatla Road and Danielczak Road. I also found a Forest County aluminum monument with no identifying stamp S89°42'08"E, 32.91 feet of the Iron Pipe, and one Bearing Tree by others.

I accept this monument as a FOUND PERPETUATED LOCATION OF THE CORNER and established new witnesses as shown below.

A-E 7.08(3)(c)(d)(e)(h) Plan view of corner with references to at least 4 witness monuments. If in disagreement with previously established corner, show the distances between the two corners and also indicate the ties to the disputed. The directions and distances to other public land survey corners used as evidence or used for determining the corner location.



A-E 7.08(3)(i) I, Jeffrey L. DeMuth, Professional Land Surveyor No. S-2656, hereby certify that the corner location on this record was determined by me or under my direction and control and that this U.S. Public Land Survey Monument Record is correct and complete to the best of my knowledge, and belief

  
SIGNATURE

February 2, 2022  
DATE



43716322000