

# U.S. PUBLIC LAND SURVEY MONUMENT RECORD

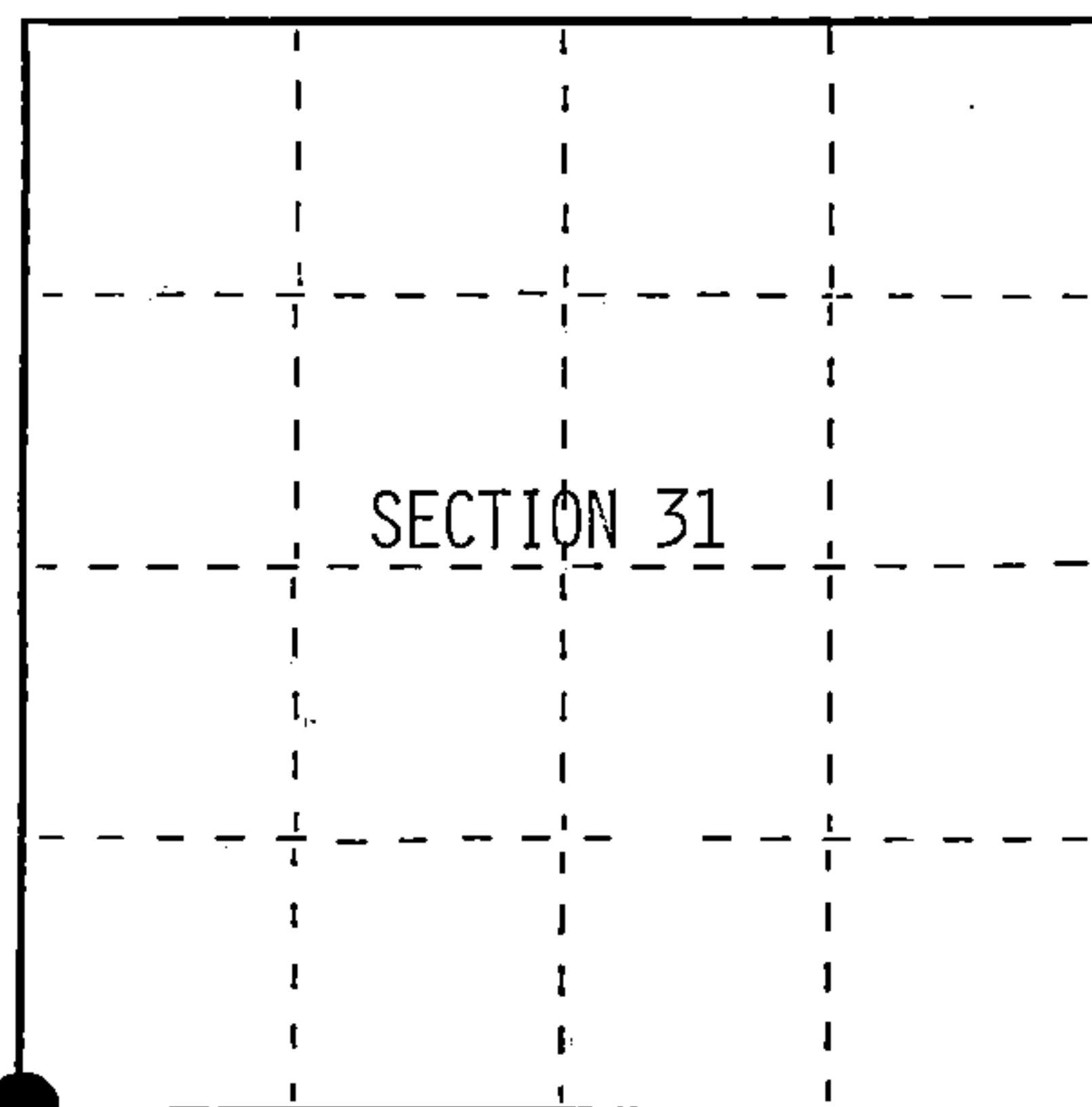
Index No. Z-1

State of Wisconsin }  
County of Forest } ss.

I William B. Cochran, do hereby  
certify that on the 5th day  
of February, 1990, I found  
evidence of the Southwest Section  
corner of Section 31  
Township 38, North, Range  
12 East, Fourth Principal Meridian,  
as described hereon; and that from this evidence  
I established a new monument and accessories  
as described hereon to perpetuate the original  
location of this corner.

Resident witnesses:

\_\_\_\_\_  
\_\_\_\_\_  
\_\_\_\_\_



● = Corner monument restored.

## History of original corner establishment:

Original Government Survey in 1858 by Alfred Millard.

Dependent Resurvey in 1937 by Wesson Cook. West on the South side of Section 31, T38N R12E, at 78.77 chains, the point for the original corner of Townships 37 and 38 North, Ranges 11 and 12 East, is determined from remains of original bearing trees. Set a concrete monument, 2 feet long, 6 inches in diameter, with a brass cap marked; T38N, R11E, R12E, S36, S31, S1, S6, T37N, 1937. From which the following bear;

Cedar	5"	N68°45'E	48.84 feet	Cedar	5"	S42°00'W	36.96 feet
Cedar	5"	S25°45'E	23.10 feet	Cedar	6"	N75°30'W	25.08 feet

## Description of corner evidence found:

Found monument as described and in place. Northeast and alongside monument, found a 2 inch diameter iron pipe with a threaded cap stamped to identify the corner.

## Found the following bearing trees;

Cedar	11"	N68°45'E	49.28 feet
Cedar	11"	S25°45'E	23.55 feet
Cedar (Stump)		S42°00'W	36.96 feet
Cedar (Stump)		N75°30'W	25.08 feet

## Description of monument and accessories I established to perpetuate the original location of this corner.

Blazed and scribed the following new bearing trees;

Cedar	11"	S35°W	38.70 feet
Spruce	9"	N16°W	14.80 feet

Set;

Steel Sign Post	South	1.00 feet
-----------------	-------	-----------

Painted and attached bearing tree signs to all bearing trees.

Dated at Hiles, Wis., this 5th day of February, 1990

Signature William B. Cochran Title Land Surveyor Registration No. S-1107  
(County Surveyor, Registered Land Surveyor, or other duly authorized official)

Office of Register of Deeds, County of Forest, I hereby certify that the within  
instrument was filed in this office for record on the 8th day of March, 1990  
at 1:00 o'clock P. M.

Paul Achenbrenner  
(Register of Deeds)

By \_\_\_\_\_ Deputy

FORM NO. 985-A

H.C. Miller Company  
DESIGNED AND PRINTED IN U.S.A.

Stock No. 26273

DOCUMENT NUMBER

139265

43811360000

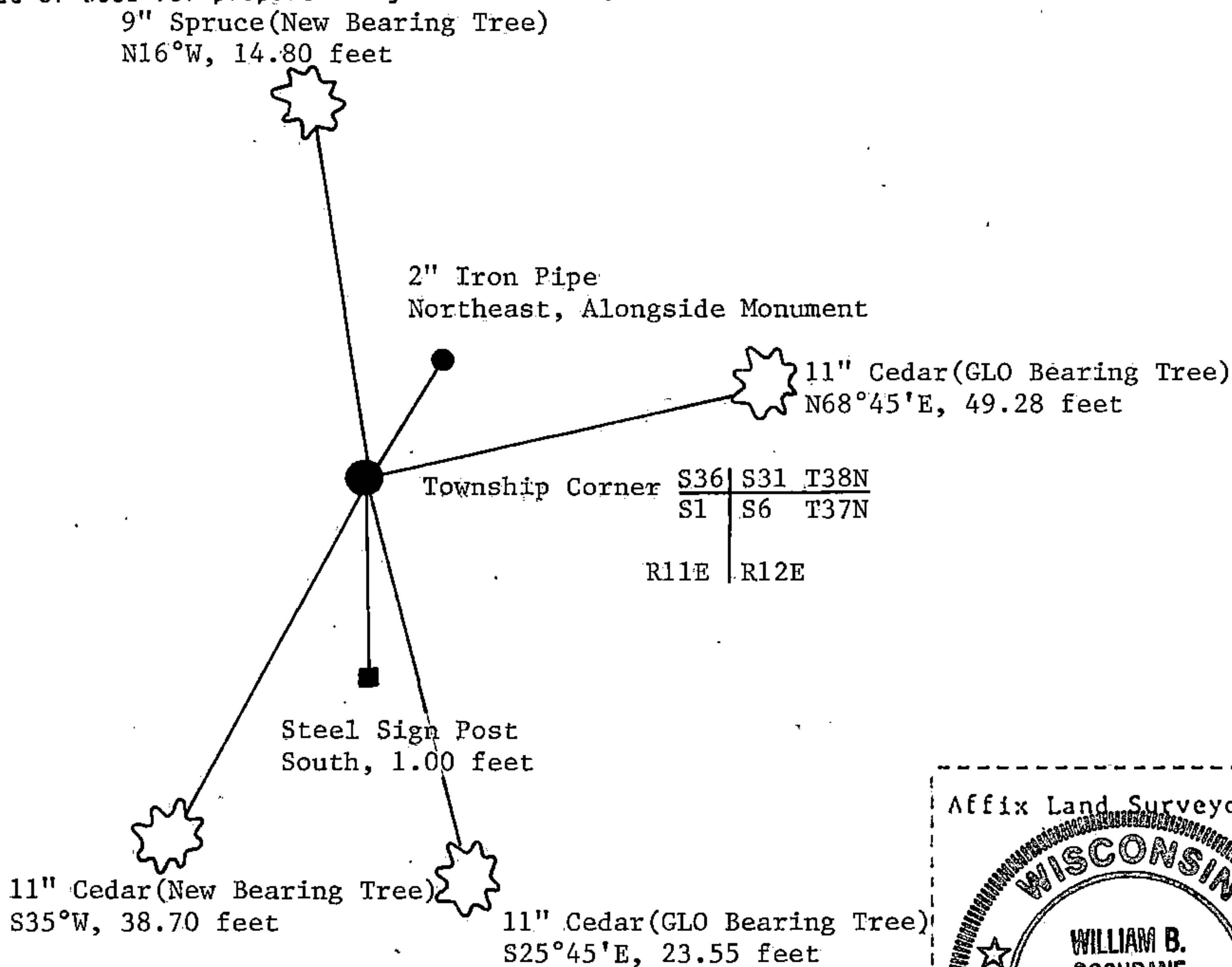
(e) Describe any material discrepancy between the location of the corner as restored or reestablished and the location of that corner as previously restored or reestablished by distance and direction. Show the discrepancy on the plan view drawing under (d), above. Show the distances between the corner as previously restored or reestablished and (1) the corner as restored or reestablished, and (2) to at least 2 of the witness monuments shown on the drawing in (d), above.

See drawing below.

(f) Was the corner restored through acceptance of (1) an obliterated evidence location, or, (2) a found perpetuated location?

Restored through acceptance of a found perpetuated location.

(g&h) Was the corner reestablished through lost corner proportionate methods? If so, show the method, including the directions and distances to other public land survey corners used as evidence or used for proportioning in determining the corner location?



Affix Land Surveyor Seal



(i) I, William B. Cochrane  
(type or print name) certify that the corner location shown on this record was determined by me or under my direction and control and that this U.S. Public Land Survey Monument Record is correct and complete to the best of my knowledge and belief.

William B. Cochrane 2/6/90  
Signature Date

Survey requested by; Cam Gordie 3/1/90  
District Ranger Date

Stock No. 26273

DOCUMENT NUMBER

139251

## U.S. PUBLIC LAND SURVEY MONUMENT RECORD

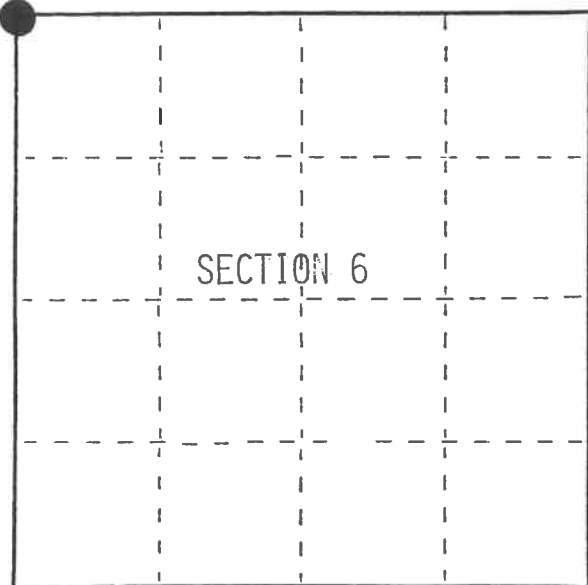
Index No. A-1

State of Wisconsin }  
County of Forest } ss.

I, William B. Cochrane, do hereby  
certify that on the 5th day  
of February, 1990, I found  
evidence of the Northwest Section  
corner of Section 6  
Township 37, North, Range  
12 East, Fourth Principal Meridian,  
as described hereon; and that from this evidence  
I established a new monument and accessories  
as described hereon to perpetuate the original  
location of this corner.

Resident witnesses:

.....  
.....  
.....



● = Corner monument restored.

## History of original corner establishment:

Original Government Survey in 1858 by Alfred Millard.

Dependent Resurvey in 1937 by Wesson Cook. West on the South boundary of Section 31  
T38N R12E, at 78.77 chains, the point for the original corner of Townships 37 and 38  
North, and Ranges 11 and 12 East, is determined from remains of original bearing trees.  
Set a concrete monument, 2 feet long, 6 inches in diameter, with a brass tablet marked;  
T38N, R11E, R12E, S36, S31, S1, S6, T37N, 1937. From which the following bear;

Cedar	5"	N68°45'E	48.84 feet	Cedar	5"	S42°00'W	36.96 feet
Cedar	5"	S25°45'E	23.10 feet	Cedar	6"	N75°30'W	25.08 feet

## Description of corner evidence found:

Found monument as described and in place. Northeast and alongside monument, found a  
2 inch diameter iron pipe with a threaded cap stamped to identify the corner.

Found the following bearing trees;

Cedar	11"	N68°45'E	49.28 feet
Cedar	11"	S25°45'E	23.55 feet
Cedar (Stump)		S42°00'W	36.96 feet
Cedar (Stump)		N75°30'W	25.08 feet

Description of monument and accessories I established to perpetuate the original location of this corner.

Blazed and scribed the following new bearing trees;

Cedar	11"	S35°W	38.70 feet
Spruce	9"	N16°W	14.80 feet
Set;			
Steel Sign Post		South	1.00 feet

Painted and attached bearing tree signs to all bearing trees.

Dated at Hiles, Wis., this 5th day of February, 1990

Signature William B. Cochrane Title Land Surveyor Registration No. S-1107  
(County Surveyor, Registered Land Surveyor, or other duly authorized official)

Office of Register of Deeds, County of Forest, I hereby certify that the within  
instrument was filed in this office for record on the 8th day of March, 1990  
at 1:00 o'clock P. M.

Paul Achenbrenner  
(Register of Deeds)

By \_\_\_\_\_ Deputy

438/1360000

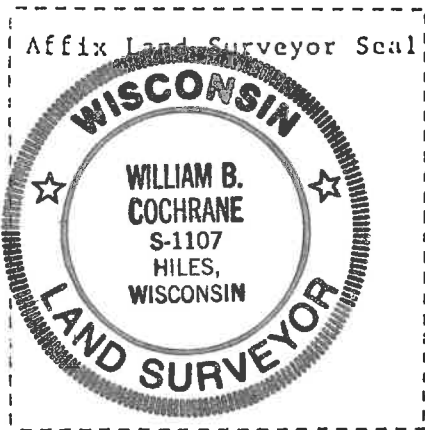
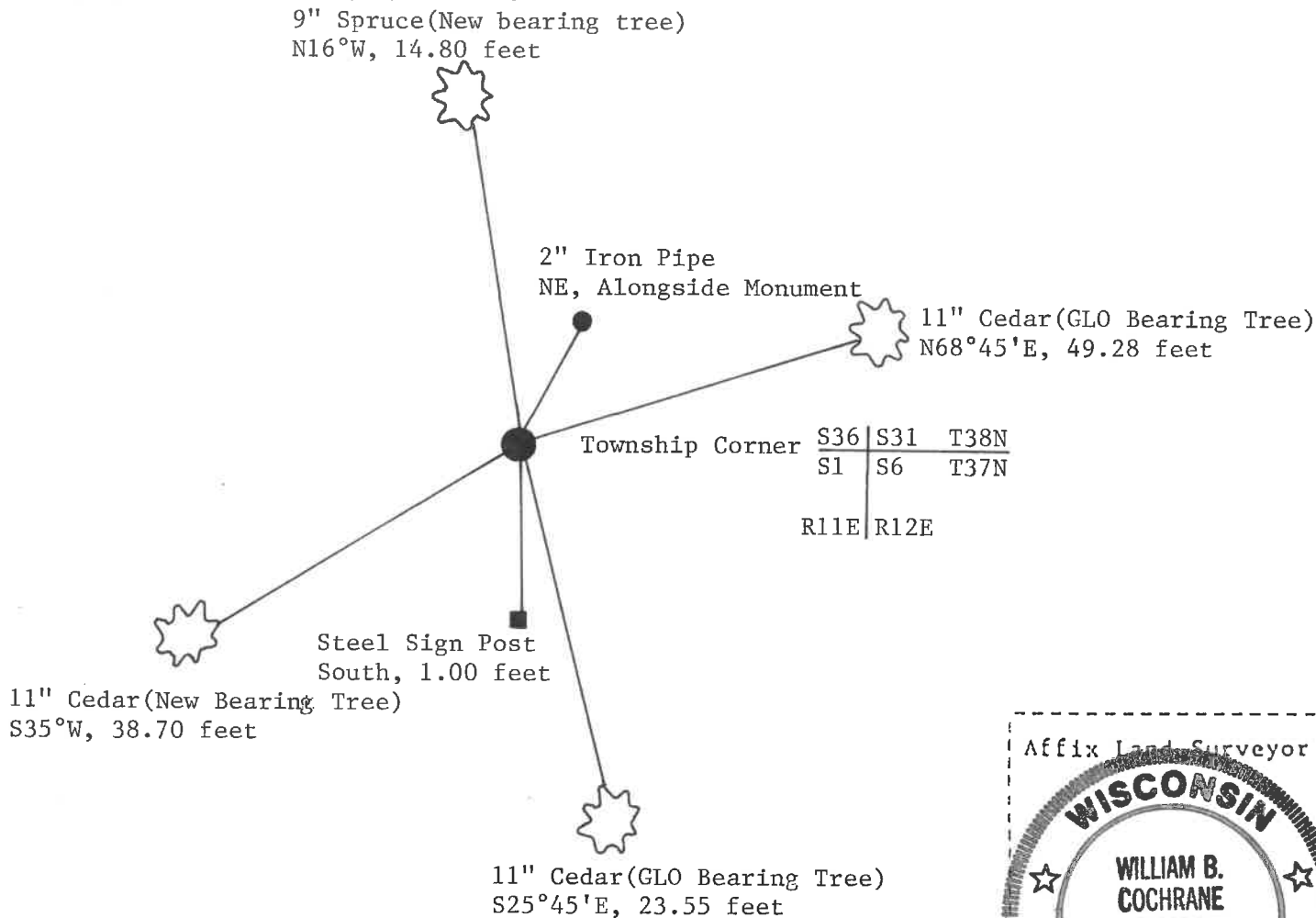
e) Describe any material discrepancy between the location of the corner as restored or reestablished and the location of that corner as previously restored or reestablished by distance and direction. Show the discrepancy on the plan view drawing under (d), above. Show the distances between the corner as previously restored or reestablished and (1) the corner as restored or reestablished, and (2) to at least 2 of the witness monuments shown on the drawing in (d), above.

See drawing below.

f) Was the corner restored through acceptance of (1) an obliterated evidence location, or, (2) a found perpetuated location?

Restored through acceptance of a found perpetuated location.

g&h) Was the corner reestablished through lost corner proportionate methods? If so, show the method, including the directions and distances to other public land survey corners used as evidence or used for proportioning in determining the corner location?



i) I, William B. Cochrane  
(type or print name) certify that the corner location shown on this record was determined by me or under my direction and control and that this U.S. Public Land Survey Monument Record is correct and complete to the best of my knowledge and belief.

William B. Cochrane 2/6/90  
Signature Date

Survey requested by; Sam Gordon 3/1/90  
District Ranger Date